

Product datasheet for **RR212026**

Insr (NM_017071) Rat Tagged ORF Clone

Product data:

Product Type: Expression Plasmids
Product Name: Insr (NM_017071) Rat Tagged ORF Clone
Tag: Myc-DDK
Symbol: Insr
Vector: pCMV6-Entry (PS100001)
E. coli Selection: Kanamycin (25 ug/mL)
Cell Selection: Neomycin
ORF Nucleotide Sequence: >RR212026 representing NM_017071
Red=Cloning site Blue=ORF Green=Tags(s)

TTTTGTAATACGACTCACTATAGGGCGGCCGGGAATTCGTCGACTGGATCCGGTACCGAGGAGATCTGCC
GCC**CGATCGCC**

ATGGGCTCCGGGAGAGGATGTGAGACGACGGCGGTGCCGTTGCTGATGGCCGTGGCCGCTTGCTGGTGG
GCACAGCCGGCCACCTGTACCCTGGAGAGGTGTGCCCGGAATGGACATCCGGAACAACCTGACCAGGTT
GCATGAGCTGGAGAAGTCTCGTTCGATGAGGGCCATCTGCAGATCCTCTTGATGTTCAAGACCAGACCC
GAAGATTTCCGAGACCTCAGTTTCCCAAACCTCATCATGATCACAGACTACCTGCTTCTTTCCGCTGCT
ATGGCCTAGAAAGTCTAAAAGACCTCTTCCCAAACCTCACAGTCATCCGAGGCTCCCGTCTCTTCTTCAA
CTATGCCCTGGTCATCTTCGAGATGGTCCACCTGAAGGAGCTGGGTCTTTACAACCTCATGAACATCACC
CGGGGCTCTGTCCGCATCGAGAAGAATAATGAACTCTGTACCTGGCCACTATCGACTGGTCCCGCATCC
TGGATTCCGTGGAGGACAACCTACATTGTACTGAACAAAGATGACAATGAGGAATGTGGGACGTCTGTCC
AGGCACAGCCAAGGGCAAGACCAACTGCCCTGCCACCGTCATCAATGGGCAGTTTGTGGAACGGTGTGG
ACACACAGTCATTGTGAGAAAGTTTGCCCAACCATCTGTAAGTCACATGGCTGCACAGCTGAAGGCCTGT
GCTGTACAAGGAGTGCCTGGGCAACTGTTGAGAACCCGATGACCCTACCAAGTGTGTGGCTGTGCGAAA
CTTCTACCTGGATGGTCACTGTGTGGAGACCTGCCACCACCCTACTATCACTTCCAGGATTGGCGCTGT
GTAACCTCAGCTTCTGCCAAGACCTTCACTACAAATGCAGGAACCTCAGGAAGCCTGGCTGTACCAAT
ACGTCAATCACAACAACAAGTGCATCCCGAGTGGCCGCTGGCTATACCATGAATTCAGCAACTTGAT
GTGCACCCCGTGTCTGGGACCCTGTCTAAGGTCTGCCAAATCCTCGAAGGCGAGAAGACCATTGATTCC
GTGACATCTGCCAGGAGCTCCGAGGCTGCACTGTGATCAATGGCAGCCTGATTATCAACATCCGAGGGG
GCAACAACCTGGCAGCTGAACTAGAGGCTAACCTTGGCCTCATTGAAGAAATCTCAGGGTTCTTAAAGT
CCGTCGCTCCTATGCTCTGGTGTCACTTTCTTTCTTCCAGGAAGCTACATCTGATTGAGGAGAGACCTTG
GAAATTTGGGAATATTCTTTCTACGCCTTGGACAACCAGAACCTGAGGCAGCTGTGGGACTGGAACAAG
ACAACCTCACGATCACTCAGGGCAAGCTTCTTCCACTACAACCCAACTCTGCCTGTCTGAGATCCA
CAAGATGAGGAAGTGTCCGGAACCAAGGGCCGCAAGGAGAGGAACGACATTGCCCTGAAGACCAACGGG
GACCAGGCATCCTGTGAAAATGAATTAATAATTCTCTTTCATCCGGACGTCTTTTGACAAGATCTTGC
TGAGGTGGGAGCCCTACTGGCCCCGACTTCCGAGATCTCCTGGGATTCATGCTGTTCTACAAAGAGGC
CCCTTATCAGAACGTGACAGAGTTTGACGGCAGGATGCGTGTGGCTCCAACAGCTGGACTGTGGTGGAT



[View online »](#)

ATTGACCCGCCCCAGAGGTCCAACGACCCTAAGTCTCAGACCCCAAGCCACCCTGGGTGGCTGATGCGGG
GCCTCAAACCCTGGACCCAGTATGCCATCTTTGTCAAGACCTTGGTTACCTTCTCTGATGAACGCCGGAC
CTATGGAGCCAAAAGTGATATCATCTATGTGCAAAACAGATGCCACCAATCCTTCCGTTCCCTGGATCCC
ATATCAGTTTCCAACCTCATCTCAGATTATCTTAAAGTGAAGCCCCCTCGGACCCCAATGGCAACA
TCACACACTACCTGGTCTACTGGGAGAGGCAGGCGGAGGACAGCGAGCTGTTGAGTTGGATTATTGTCT
CAAAGGGCTGAAGCTCCCCTCACGCACCTGGTCCCCACCTTTTGGAGCTGACGATTCTCAAAGCACAAT
CAGAGTGAGTATGACGACTCGGCCAGCGAGTGTCTCATGTCCCTAAGACTGACTCTCAGATCCTGAAGG
AGCTGGAGGAGTCTTCATTGAGGAAGACCTTCGAGGATTACCTGCACAAGTGGTTTTTGTCCAGAAA
AACCTTCTCAGGCAATGGTGCTGAGGACACTAGGCCATCCCAGAAAGCAAGATCCCTTGAAGAGGTGGG
AATGTGACAGCCACTACCCACACTTCCAGATTTTCCCAACATCTCTCCACCATCGCGCCACAAAGCC
ACGAAGAGCACAGACATTTGAGAAAGTAGTAAACAAGGAGTCACTTGTCTCTGCGCTGAGACACTT
CACTGGGTACCGCATTGAGCTGCAGGCATGCAATCAGGACTCCCCAGAAGAGAGGTGCAGCGTGGCTGCC
TACGTGAGTCCCGGACCATGCCTGAAGCTAAGGCAGATGACATCGTTGGCCCTGTGACCCATGAAATCT
TTGAGAACAATGTTGTACTTAATGTGGCAAGAGCCAAAGAACCTAATGGTCTGATTGTCTATATGA
AGTGAGCTATCGCGGATATGGTGATGAGGAGTGCACCTCTGTGTCTCCCGAAGCATTTTGCCTGGAG
CGGGGCTCGAGGCTTCGAGGGCTCTCCAGGAAACTACAGTGTTCGAGTCCGGGCTACCTCTGCGAG
GAAATGGCTCCTGGACAGAACCACCTATTTTTATGTGACTGATTATTTAGATGTCCCATCAAATATTGC
CAAATATATCATCGGGCCCTCATCTTCGTTCTTCTTCCAGTGTGCTGATCGGAAGTATTTATCTATTC
TTGAGGAAGAGGCAGCCAGATGGGCAATGGGACCACTGTACGCTTCTTCAAACCCAGAGTACCTCAGTG
CCAGTGATGTCTTTCCATCTTCCGTATACGTTCCGGATGAGTGGGAGGTACCTCGAGAGAAGATCACCT
CCTCCGAGAGCTGGGGCAGGGATCCTTCGGTATGGTGTACGAAGCAATGCCAAGGATATCATCAAGGGT
GAGGTAGAGACCCGTGTTGCGGTGAAGACGGTCAATGAGTCAAGCAGTCTTCGAGAACGGATCGAGTTC
TCAATGAGGCATCAGTCATGAAGGGCTTCACTGTCATCACGTGGTCCGCCTTCTTGGGGTGGTCCAA
AGGCCAGCCACATTGGTAGTGATGGAAGTGTGAGGCTCATGGAGACCTGAAAAGTCACTCCGTTCTCTG
CGGCCGATGCTGAGAACAACCAGGCCGCTCCTCCCCCTACCTTGCAAGAAATGATTGAGATGACAGCAG
AAATTGCCGATGGCATGGCATACTTGAACGCCAAGAAGTTTGTGACCCGGGACCTGGCAGCTCGAACTG
CATGGTTGCCATGATTTTACTGTCAAATCGGAGACTTTGGAATGACGAGAGACATCTACGAGACAGAT
TACTATCGGAAAGGGGGCAAGGGTGTGCTGCCGTGAGGTGGATGTACCCGAGTCCCTGAAGGACGGAG
TCTTCACTGCTTCTTCCGACATGTGCTCCTTTGGGGTGGTCTTTGGGAAATCACCGCCTGGCTGAGCA
ACCTTACCAAGGCCTGTCTAATGAACAGGTGTTGAAATTTGTGATGGATGGAGGCTATCTGGATCCCCT
GATAACTGTCCAGAGAGACTCACTGACCTGATGCGCATGTGCTGGCAGTCAACCCCAAGATGAGGCCGA
CCTTCTGAAAATCGTCAACCTGCTCAAGGACGACCTCCACCCAGCTTCCGGAAGTTTCTTCTTCTA
CAGCGAGGAGAACAAGGCTCCCAGAGTGAAGAGCTGGAGATGGAGTTCGAGGACATGGAGAATGTCCC
TTGGATCGTTCTCTCACTGTGAGAGAGAAGAGGCTGGATGCCGGGAGGGAGGGTCTCTGAGCATCA
AACGGACCTATGATGAACACATCCCCTACCCACATGAACGGGGCAAGAAGAAATGGGCGGGTCTCAC
CCTGCCGAGGTGCAACCCTTCC

ACGCGTACGCGGGCCGCTCGAGCAGAAACTCATCTCAGAAGAGGATCTGGCAGCAAATGATATCCTGGATT
ACAAGGATGACGACGATAAGGTTTAA

Protein Sequence: >RR212026 representing NM_017071
 Red=Cloning site Green=Tags(s)

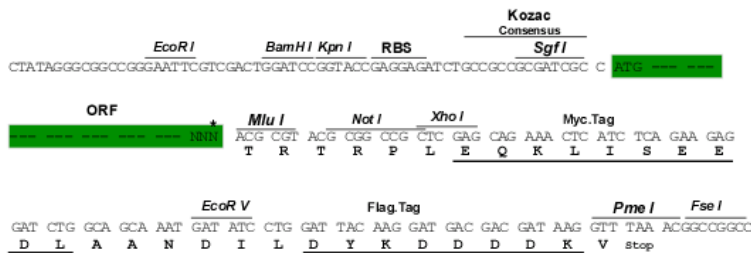
MGSGRGCETTAVPLLMAVAALLVGTAGHLYPGEVCPGMDIRNNLTRLHELENCVIEGHLQILLMFKTRP
 EDFRDL SFPKLIMITDYLLLFRVYGLLESLKDLFPNLTVIRGSRLFFNYALVIFEMVHLKELGLYNLMNIT
 RGSVRIEKNELCYLATIDWSRILDSVEDNYIVLNKDDNEECGDVCPGTAKGKTNCPTVINGQFVERCW
 THSHCQKVCPTICKSHGCTAEGLCCHKECLGNCSEPDPTKCVACRNFYLDGQCVCPPPPYHFQDWRC
 VNF SFCQDLHYKCRNSRKP GCHQYVIHNNKCIPECPSGYTMNSSNLMCTPCLGPCPKVCQILEGEKTIDS
 V TSAQELRGCTVINGSLIINIRGGNNLAAELEANLGLIEEISGFLKIRRSYALVLSFFRKLHLIRGETL
 EIGNYSFYALDNQNLRQLWDWNKHNLITIQGKLFHYNPKLCLSEIHKMEEVSGTKGRQERNDIALKNTG
 DQASCENELLKFSFIRTSFDKILLRWEPYWPPDFRDLLGFMLFYKEAPYQNVTEFDGQDACGSNSWTVVD
 IDPPQRSNDPKSQTPSHPGWLMRGLKPWTQYAFVKTLVTFSDERRTYGAKSDIIVYQTDATNPSVPLDP
 ISVSNSSQIILKWKPPSDPNGNITHYL VYWERQAEDSELFELDYCLKGLKLPRTWSPPFESDDSQKHN
 QSEYDDSA SECCSPKTD SQILKELEESSFRKTFEDYLHN VVFPVPRKTS SNGAEDTRPSRKRRSLEEVG
 NVTATPTLPDFPNISSTIAPT SHEEHRPF EKVVNKESLVISGLRHFTGYRIELQACNQD SPEERC SVAA
 YVSARTMPEAKADDIVGPVTHEIFENNVHLMWQEPKEP NGLIVLYEVS YRRYGD EELHLCVSRKHFALE
 RGRLRGLSPGNYSVRV RATSLAGNSWTEPTYFYVTDYLDVPSNIAKIIIGPLIFVFLFSVVIIGSIYLF
 LRKRQPDGPMGPLYASSNPEYLSASDVFPSSVYVPDEWEVPREKITLLRELGGQSF GMVYEGNAKDIKIG
 EVETRVAVKTVNESASLRERIEFLNEASVMKGFTCHHVRL LGVSVKGQPTLVVME LMAHGDLKSHLRSL
 RPD AENNPGRPPPTLQEMI QMTAEIADGMAYLNAK KFVHRDLAARNCMVAHDFTVKIGDFGMTRDIYETD
 YYRKGKGLLPVRWMSPE SLKDG VFTASDMMW SFGVVLWEITSLAEQPYQGLSNEQVLK FVMDGGYLDPP
 DNCPERLTDLMRMCWQFNPKMRPTFLEIVNLLKDDLHPSFPEVSFFYSEENKAP ESELEMEFEDMENVP
 LDRSSHQCREEAGCREGSSLSIKR TYDEHIPYTHMNGGKKNRVLTLPRSNPS

TRTRPLEQKLISEEDLAANDILDYKDDDDKV

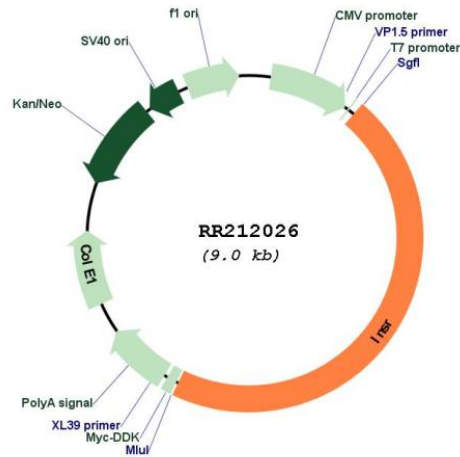
Restriction Sites:
 Cloning Scheme:

SgfI-MluI

Cloning sites used for ORF Shuttling:



* The last codon before the Stop codon of the ORF

Plasmid Map:


ACCN: NM_017071

ORF Size: 4152 bp

OTI Disclaimer: The molecular sequence of this clone aligns with the gene accession number as a point of reference only. However, individual transcript sequences of the same gene can differ through naturally occurring variations (e.g. polymorphisms), each with its own valid existence. This clone is substantially in agreement with the reference, but a complete review of all prevailing variants is recommended prior to use. [More info](#)

OTI Annotation: This clone was engineered to express the complete ORF with an expression tag. Expression varies depending on the nature of the gene.

Components: The ORF clone is ion-exchange column purified and shipped in a 2D barcoded Matrix tube containing 10ug of transfection-ready, dried plasmid DNA (reconstitute with 100 ul of water).

Reconstitution Method:

1. Centrifuge at 5,000xg for 5min.
2. Carefully open the tube and add 100ul of sterile water to dissolve the DNA.
3. Close the tube and incubate for 10 minutes at room temperature.
4. Briefly vortex the tube and then do a quick spin (less than 5000xg) to concentrate the liquid at the bottom.
5. Store the suspended plasmid at -20°C. The DNA is stable for at least one year from date of shipping when stored at -20°C.

RefSeq: [NM_017071.2](#), [NP_058767.2](#)

RefSeq Size: 5399 bp

RefSeq ORF: 4155 bp

Locus ID: 24954

Cytogenetics: 12p12

MW: 156.9 kDa

Gene Summary: receptor for insulin; involved in intracellular signalling; mutations in gene are associated with type 2 diabetes mellitus [RGD, Feb 2006]