

## Product datasheet for **RR212016**

### **Man1c1 (NM\_001108687) Rat Tagged ORF Clone**

#### **Product data:**

Product Type:	Expression Plasmids
Product Name:	Man1c1 (NM_001108687) Rat Tagged ORF Clone
Tag:	Myc-DDK
Symbol:	Man1c1
Vector:	pCMV6-Entry (PS100001)
E. coli Selection:	Kanamycin (25 ug/mL)
Cell Selection:	Neomycin



[View online »](#)

**ORF Nucleotide Sequence:**

>RR212016 representing NM\_001108687  
 Red=Cloning site Blue=ORF Green=Tags(s)

TTTTGTAATACGACTCACTATAGGGCGGCCGGAATTCGTCGACTGGATCCGGTACCGAGGAGATCTGCC  
 GCC**CGGATCGCC**

ATGCTGGTGGAGAAAGTCCGGGCTTCGTCGCCGCTCGTCGTTGGGGCTGCGGTTGCCGAGAAGTTCC  
 TTTTCTGCTCTTCTCTCGGGCTCGTTACCCTGTGCTTCGGTGCCCTGTTCTGCTGCCCCACTCCTC  
 TCGCCTCAAGCGCCTCTTCTCGGCTCGCGACGACGAGCCCGCCTGGAGGTGATGGCCGAAATCGCC  
 GCCACCCTCGGTGTCAGAGCAAGAGCCGCTCCCAACCCTGCCCTCGGGCTCCGGCCCCGGGTGAGG  
 ACGATTCCGGCCGCTGGTGGGTGCTCTCGTAGGAAAGGTGGCTGCGGCAACCCGCCACCAGGGCC  
 CCGGGAGAGGGCAACAGGGTTTCAGCCCTCGGCCGACGGAAGAGAGCGTCCGGTTCAGTTTCTGACTAC  
 AATAGTTTCCGACCGCCTTCGACACCCGGTCTTGGGACAAGGACTGATGAGAGTCAGGAGTCCAGAG  
 GTCTAGTGAGAGCTCAGAGAGAGAAAATCAAAGAGATGATGCGGTTTTCTGGCAGAGTTACCGCGTTA  
 TCGCATGGGAAGAACGAGCTTCGGCCACTCACAAGGACGGCTTCGAGGCGAGCATGTTTGGCGGTCTC  
 AGTGGGGCGACCATCATCGATTCTCGACACCCCTTACCTCATGGAGCTGAAAGAGGAGTTCAGGAGG  
 CCAAGGCTGGGTGCAAGACAGTTTCCACCTGAACGTGAGTGGAGAAGCATCTTTGTTTGAAGTGAACAT  
 CCGGTATATCGGAGGACTGCTCTCGGCCTTCTACCTGACAGGAGAAGAGGTGTTCCGAGTGAAGGCCATC  
 AAGCTGGGTGAGAACTGCTGCCCGCTTCAACACACCCACGGGCATCCCCAAGGGCGTGGTGAACCTCA  
 AAAGCGGTAGCTGGGGCTGGGCCACCGCGGACGACGAGCATCTGGCGGAGTTTGGGTCCCTGCACTT  
 GGAATCTTGCATCTCACTGAACTCTTGGAATCCAATCTTTCAGAAAAGGTGAGAAATCCGCAAG  
 GTCCTCAGGAGATTGACAAACCCTTCGGCCTTACCCCAACTTCTCAGCCAGTGAGCGGAACTGGG  
 TACAGCATCAGTCTCAGTCGGGGGACTTGGGGACAGTTTTTATGAATATTTGATCAAGTCTGGTTGAT  
 GTCTGCCAAAACAGATATGGAGGCTAAAACCATGTACTACGAAGCCTTAGAGGCCATAGAGACCTATCTG  
 GTGAATGTCTCTCGGGGGCCTGACCTACATTGCTGAGTGGCGAGGAGGAATTCTGGACCAAGATGG  
 GACACCTTGCTTCTCTCGGGGGCATGATCGCCCTTGGTGTGAGGATGCCAAGGAAGATAAAAGGGC  
 CTACTACCGAGAGCTTGCAGCCAGATCACCAGGACCTGCCACGAGTCTACGCCGCTCAGACACCAAG  
 CTGGGGCCTGAGGCTTCTGGTTCAACTCTGGCCGAGAGGCGGTGGCCACACAGCTGAGCGAGAGCTATT  
 ACATCTGCGACCTGAGGTGGTGGAGAGCTACATGTACCTGTGGCGCAGACACAGACCCCATCTACAG  
 GGAGTGGGGCTGGGAGGTGGTATGGCCTTGGAGAAACTGCCGACGGAAGGTGGCTTCTCGGGGATC  
 CAGGACGTGTATAGCAGTAACCCCAACCACGACAACAGGCAACAGAGCTTCTTCTGGCTGAGACTGA  
 AATATCTCTATCTTCTGTCTCTGAAGATGATGTGCTGTGCTGGAGACTGGGTGTTCAACACCGAGGC  
 TCATCCACTGCCCGTCAACCGCTCGGACAGCTCCAGCGTGGCTGGGCACCGCCAC

**ACGCGT**ACGCGGCCGCTCGAGCAGAAACTCATCTCAGAAGAGGATCTGGCAGCAAATGATATCCTGGATT  
 ACAAGGATGACGACGATAAGGTTTAA

**Protein Sequence:**

>RR212016 representing NM\_001108687  
 Red=Cloning site Green=Tags(s)

MLVRKVPGFVPASSWGLRPLPQKFLFLLFLSGLVTLFCFALFLLPHSSRLKRLFSASRTQQPGLVMAEIA  
 GHHSVSEQEPNPAPAPAGEDDSGRLVGVLRRKGWLRRTPTGPREEGNRVSALRPQEEVSRFSFDY  
 NSFRRSLRHPVLGTRTDESQESQSLVRAQREKIKEMMRFSWQSYRRYAMGKNELRPLTKDGFEGSMFGGL  
 SGATIIDSIDLTYLMELKEEFQEAQAWQDSFHLNVSGEASLFEVNIRYIGLLSAFYLTGEEVFRVKAI  
 KLGEKLLPAFNTPGIPKGVVNFKSGSWGATAGSSSILAEFGSLHLEFLHLELTELSGNPIFAEKVRNIRK  
 VLREIDKPFGLYPNPLSPVSGNWWQHHVSVGGGDSFYEYLIKSWLMSAKTDMEAKTMYEAEIAIETYL  
 VNVSPGGLTYIAEWRGGILDHKMGHLACFSGGMIALGAEDAKEDKRAYRELAQITRTCHESYARSDTK  
 LGPEAFWFNSGREAVATQLSESYILRPEVVESYMYLWRQTHDPIYREWGWVMALEKHCRTEGGFSGI  
 QDQVYSSNPNDNRQQSFFLAETLKLYLLFSEDDVLSLEDVWFNTEAHPLPVNRSDDSSSVAGHRH

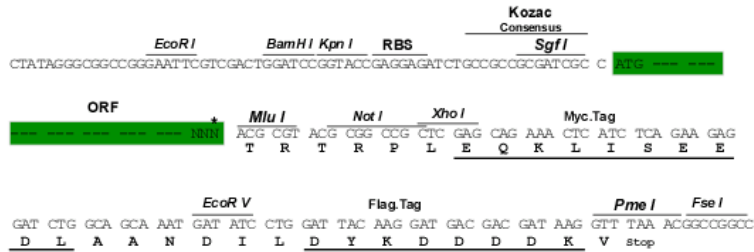
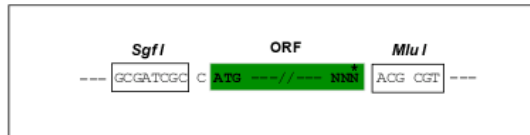
**TRTRPLEQKLI**SEEDLAANDILDYKDDDDKV

**Restriction Sites:**

Sgfl-Mlul

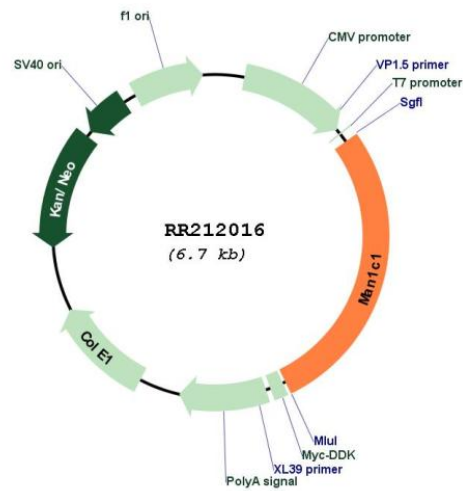
Cloning Scheme:

Cloning sites used for ORF Shutting:



\* The last codon before the Stop codon of the ORF

Plasmid Map:



ACCN: NM\_001108687

ORF Size: 1875 bp

<b>OTI Disclaimer:</b>	The molecular sequence of this clone aligns with the gene accession number as a point of reference only. However, individual transcript sequences of the same gene can differ through naturally occurring variations (e.g. polymorphisms), each with its own valid existence. This clone is substantially in agreement with the reference, but a complete review of all prevailing variants is recommended prior to use. <a href="#">More info</a>
<b>OTI Annotation:</b>	This clone was engineered to express the complete ORF with an expression tag. Expression varies depending on the nature of the gene.
<b>Components:</b>	The ORF clone is ion-exchange column purified and shipped in a 2D barcoded Matrix tube containing 10ug of transfection-ready, dried plasmid DNA (reconstitute with 100 ul of water).
<b>Reconstitution Method:</b>	<ol style="list-style-type: none"> <li>1. Centrifuge at 5,000xg for 5min.</li> <li>2. Carefully open the tube and add 100ul of sterile water to dissolve the DNA.</li> <li>3. Close the tube and incubate for 10 minutes at room temperature.</li> <li>4. Briefly vortex the tube and then do a quick spin (less than 5000xg) to concentrate the liquid at the bottom.</li> <li>5. Store the suspended plasmid at -20°C. The DNA is stable for at least one year from date of shipping when stored at -20°C.</li> </ol>
<b>RefSeq:</b>	<a href="#">NM_001108687.1</a> , <a href="#">NP_001102157.1</a>
<b>RefSeq Size:</b>	3767 bp
<b>RefSeq ORF:</b>	1878 bp
<b>Locus ID:</b>	362625
<b>Cytogenetics:</b>	5q36
<b>MW:</b>	70.7 kDa