

Product datasheet for **RR211965**

Cd302 (NM_001013916) Rat Tagged ORF Clone

Product data:

Product Type: Expression Plasmids
Product Name: Cd302 (NM_001013916) Rat Tagged ORF Clone
Tag: Myc-DDK
Symbol: Cd302
Synonyms: RGD1307606
Vector: pCMV6-Entry (PS100001)
E. coli Selection: Kanamycin (25 ug/mL)
Cell Selection: Neomycin
ORF Nucleotide Sequence: >RR211965 representing NM_001013916
Red=Cloning site Blue=ORF Green=Tags(s)

TTTTGTAATACGACTCACTATAGGGCGGCCGGAATTCGTCGACTGGATCCGGTACCGAGGAGATCTGCC
GCC**CGATCGCC**

ATGCCCCACGCAGCGCTATCCTCGCTCGTGTCTGAGCCTAGCCACTGCCATCTTCGCTGACTGTCCTT
CGTCCATCTGGGTTCAAGGCAGCTGTTACACTTTCTTCAAGTAACCATCAATGTGAAAAACAT
AGAGGATGTCAGAAAGCAGTGTACTGATCACGGGCAGACCTGGTAAGTATACACAATGAAGAAGAAAAC
GCATTTATACTGGACACTTTACAAAAGCGATGGAAAGGCCGGATGATCTTCTGCTAGGCATGTTTTATG
ACACTGATGATGCAAGTTTCAAGTGGTTTATCAGTCAAATATGACATTCGACAAGTGGGCAGATGAGGA
TGGTGAGGACCTAGTTGACACCTGTGGTTTTCTGTATGCCAAGACAGGTGAATGGAGAAAAGGAAATTTG
GAAATGTCTTCTGTGACAGGAACACTTTGCAAAACAGCAATCCCATATGACAAGAAGTATTTATCAGATA
ACCACATTTTAAATCGACTCTGGTGATCGCTAGCACAGTACTCTGGCAGTTTTGGGAGCGGTCAATTTG
GTTCTCTATAGAAGGAGCGCACGCTCTGGCTTACCTCTTCTCTCCTGCACCACAATCACCTTACAGT
GATGGCTGTCTCTGGTAGTTTCGGAAGAAGATGAATACTCTGTTTCAGCTGGAC

ACGCGTACGCGGCCGCTCGAGCAGAAACTCATCTCAGAAGAGGATCTGGCAGCAAATGATATCCTGGATT
ACAAGGATGACGACGATAAGGTTTAA



[View online »](#)

Protein Sequence: >RR211965 representing NM_001013916
 Red=Cloning site Green=Tags(s)

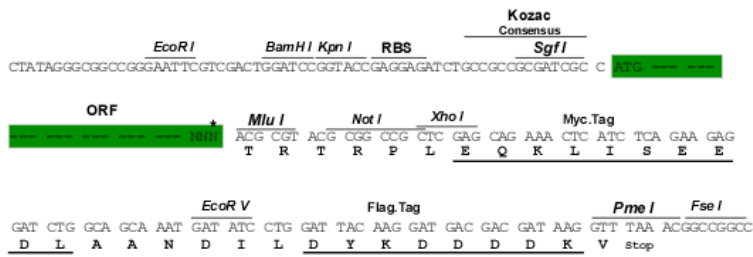
MPHAALSSLVLLSLATAIFADCPSSIWVQFQGSCYTFLLQVTINVENIEDVRKQCTDHGADLVSIHNEEEN
 AFILDTLQKRWKGPDLLLLGMFYDTDDASFKWFDQSNMTFDKWADEDGEDLVDTCCGFLYAKTGEWRKGN
 EMSSVTGTLCKTAIPYDKKYLSDNHILISTLVIASVTTLAVLGAIVWFLYRRSARSGFTSFSPAQPSPYS
 DGCALVSEEDEYSVQLD

TRTRPLEQKLISEEDLAANDILDYKDDDDKV

Restriction Sites: SgfI-MluI

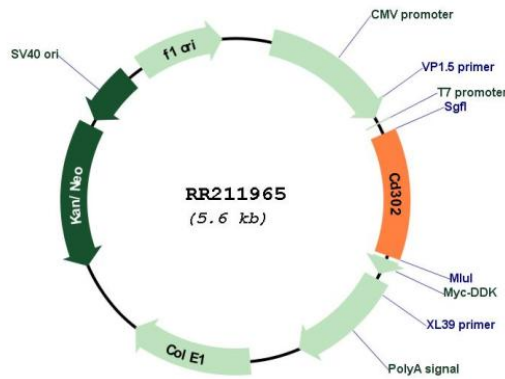
Cloning Scheme:

Cloning sites used for ORF Shuttling:



* The last codon before the Stop codon of the ORF

Plasmid Map:



ACCN: NM_001013916

ORF Size: 684 bp

OTI Disclaimer:	The molecular sequence of this clone aligns with the gene accession number as a point of reference only. However, individual transcript sequences of the same gene can differ through naturally occurring variations (e.g. polymorphisms), each with its own valid existence. This clone is substantially in agreement with the reference, but a complete review of all prevailing variants is recommended prior to use. More info
OTI Annotation:	This clone was engineered to express the complete ORF with an expression tag. Expression varies depending on the nature of the gene.
Components:	The ORF clone is ion-exchange column purified and shipped in a 2D barcoded Matrix tube containing 10ug of transfection-ready, dried plasmid DNA (reconstitute with 100 ul of water).
Reconstitution Method:	<ol style="list-style-type: none">1. Centrifuge at 5,000xg for 5min.2. Carefully open the tube and add 100ul of sterile water to dissolve the DNA.3. Close the tube and incubate for 10 minutes at room temperature.4. Briefly vortex the tube and then do a quick spin (less than 5000xg) to concentrate the liquid at the bottom.5. Store the suspended plasmid at -20°C. The DNA is stable for at least one year from date of shipping when stored at -20°C.
RefSeq:	NM_001013916.1 , NP_001013938.1
RefSeq Size:	1234 bp
RefSeq ORF:	687 bp
Locus ID:	295629
UniProt ID:	Q5FVR3
Cytogenetics:	3q21
MW:	25.5 kDa
Gene Summary:	Potential multifunctional C-type lectin receptor that may play roles in endocytosis and phagocytosis as well as in cell adhesion and migration.[UniProtKB/Swiss-Prot Function]