

Product datasheet for **RR211944**

Entpd5 (NM_199394) Rat Tagged ORF Clone

Product data:

Product Type: Expression Plasmids
Product Name: Entpd5 (NM_199394) Rat Tagged ORF Clone
Tag: Myc-DDK
Symbol: Entpd5
Synonyms: Pcph
Vector: pCMV6-Entry (PS100001)
E. coli Selection: Kanamycin (25 ug/mL)
Cell Selection: Neomycin
ORF Nucleotide Sequence: >RR211944 representing NM_199394
Red=Cloning site Blue=ORF Green=Tags(s)

TTTTGTAATACGACTCACTATAGGGCGCCGGAATTCGTCGACTGGATCCGGTACCGAGGAGATCTGCC
GCC**CGGATCGCC**

ATGGCCACGTCTGGGCGTCCGTCCTTCTTGCTGATCATAGCCTATGTTGGTGGCACTGTCTTCTACAGAG
AACAGCAGACTTGGTTTGAGGGTGTCTTCTGTCTCCATGTGCCCGTTAATGTCAGTGCCGGCACCTT
TTATGGAATCATGTTTGGTGCAGGAGCACTGGAACCTCGGATTCACGTTTACACCTTTGTGCAGAGAACA
TCAGGACAGCTCCCTTTCTGGAAGGTGAAATTTTATTCTGTGAAGCCGGGACTTTCTGCTTTTGTGG
ATCAACCCAAACAGGGTCTGAGACTGTCAAGAACTCTTAGAGGTGGCCAAGGACTCAATCCCCAGAAG
TCACTGGAAGCGGACGCCAGTGGTTCTGAAGGCAACGGCTGGACTGCGATTGCTGCCAGAACAGAAAGCC
CAGACCTGTCTTGGAGGTAGAGGAGATCTTCAAGAATTCACCTTTCCTGGTCCCGGATGACAGCGTTA
GCATCATGGATGGGTCTATGAAGGCATATTAGCTTGGGTTACCGTGAACCTTCTAACAGGTGAGCTGCA
TGGCCGTGGCCAGGAGACTGTGGGGACCCTTGACCTGGGGGTGCCTCCACCCAAATCACGTTTCTACCG
CAGTTGGAGAAAACCTGGAACAACACCTAAGGGCTACCTCGCTTCTTTGAGATGTTTAAACAGCACTT
TTAAGCTCTATACGCATAGTTACTTGGGATTTGGACTGAAAGCTGCAAGACTAGCAGCTGGGAGCTCT
GGAAGCAGAAGGGACTGATGGACATACTTCCGAAGTGCCTGTTACCAAGATGGTTGGAAGCAGAGTGG
ATCTTTGGGGTGTGAAATATCAGTATGGTGGTAACCAAGAAGGGGAGATGGGCTTTGAGCCCTGTATG
CAGAAGTGCAGGGGTAGTTCAAGGAAAACCTCACAGCCAGAAGAGATTCGAGGAAGCTCCTTTTATGC
TTTCTCTACTATTATGATCGAGCTGCCGAGACACTTGATTGATTATGAAAAGGGGGTGTTTTGAAG
GTTGAAGATTTTGAAGAAAAGCCAGGGAAGTGTGTGACAACCTGGAGAGCTTCTCCTCAGGCAGTCCTT
TCCTCTGCATGGACCTCAGTTACATCACAGCCTTATTGAAAGATGGCTTTGGCTTTGAGGATGGCACCTT
CTTACAGCTCACAAAGAAAGTGAACAACATAGAGACTGGTTGGGCCTTGGGAGCCACCTTTCACCTGCTC
CAGTCCCTGGGTATCACCAGC

ACGCGTACGCGGCGCTCGAGCAGAAACTCATCTCAGAAGAGGATCTGGCAGCAAATGATATCCTGGATT
ACAAGGATGACGACGATAAGGTTTAA



Protein Sequence: >RR211944 representing NM_199394
 Red=Cloning site Green=Tags(s)

MATSWASVFLIIAYVGGTVFYREQQTFWEGVFLSSMCPVNVSAGTFYGMFDAGSTGTRIHVYTFVQRT
 SGQLPFLEGEIFDSVKPGLSAFVDQPKQGAETVQELLEVAKDSIPRSHWKRTPVVLKATAGLRLLPEQKA
 QTLLEVEEIEFKNSPFLVPDDSVSIMDGSYEGILAWVTVNFLTGQLHGRGQETVGTLDLGGASTQITFLP
 QLEKTLEQTPKGYLASFEMFNSTFKLYTHSYLGFGLKAARLATLGALEAEGTDGHTFRSACLPRWLEAEW
 IFGGVKYQYGGNQEGEMGFPCYAEVRRVVQGKLHQPEEIRGSSFYAFSYYDRAAETHLIDYEKGGVLK
 VEDFERKAREVCDNLESFSSGSPFLCMDLSYITALLKDGFGFEDGTLQLTKVNNIETGVALGATFHLL
 QSLGITS

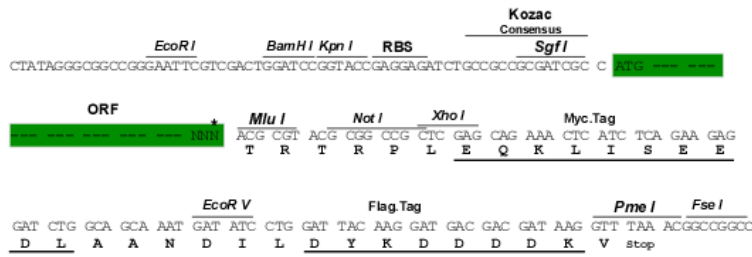
TRTRPLEQKLISEEDLAANDILDYKDDDDKV

Restriction Sites:

SgfI-MluI

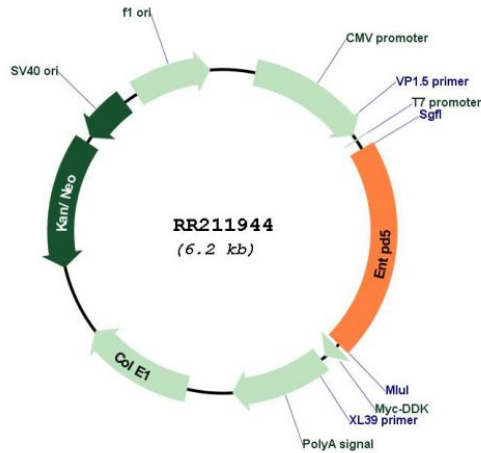
Cloning Scheme:

Cloning sites used for ORF Shuttling:



* The last codon before the Stop codon of the ORF

Plasmid Map:



ACCN:

NM_199394

ORF Size:	1281 bp
OTI Disclaimer:	The molecular sequence of this clone aligns with the gene accession number as a point of reference only. However, individual transcript sequences of the same gene can differ through naturally occurring variations (e.g. polymorphisms), each with its own valid existence. This clone is substantially in agreement with the reference, but a complete review of all prevailing variants is recommended prior to use. More info
OTI Annotation:	This clone was engineered to express the complete ORF with an expression tag. Expression varies depending on the nature of the gene.
Components:	The ORF clone is ion-exchange column purified and shipped in a 2D barcoded Matrix tube containing 10ug of transfection-ready, dried plasmid DNA (reconstitute with 100 ul of water).
Reconstitution Method:	<ol style="list-style-type: none">1. Centrifuge at 5,000xg for 5min.2. Carefully open the tube and add 100ul of sterile water to dissolve the DNA.3. Close the tube and incubate for 10 minutes at room temperature.4. Briefly vortex the tube and then do a quick spin (less than 5000xg) to concentrate the liquid at the bottom.5. Store the suspended plasmid at -20°C. The DNA is stable for at least one year from date of shipping when stored at -20°C.
RefSeq:	NM_199394.1 , NP_955426.1
RefSeq Size:	1805 bp
RefSeq ORF:	1284 bp
Locus ID:	314312
UniProt ID:	Q6P6S9
Cytogenetics:	6q31
MW:	47.4 kDa
Gene Summary:	displays altered expression during chemically induced mammary carcinogenesis [RGD, Feb 2006]