

## Product datasheet for **RR211924**

### **Fnbp1 (NM\_138914) Rat Tagged ORF Clone**

#### **Product data:**

Product Type:	Expression Plasmids
Product Name:	Fnbp1 (NM_138914) Rat Tagged ORF Clone
Tag:	Myc-DDK
Symbol:	Fnbp1
Vector:	pCMV6-Entry (PS100001)
E. coli Selection:	Kanamycin (25 ug/mL)
Cell Selection:	Neomycin



[View online »](#)

**ORF Nucleotide Sequence:**

>RR211924 representing NM\_138914  
 Red=Cloning site Blue=ORF Green=Tags(s)

TTTTGTAATACGACTCACTATAGGGCGGCCGGAATTCGTGACTGGATCCGGTACCGAGGAGATCTGCC  
 GCC**CGATCGCC**

ATGAGCTGGGCACTGAGCTCTGGGATCAGTTTGACAACCTGGAAAAACACACACAGTGGGGAATCGACA  
 TTCTTGAGAAATACATCAAGTTCGTCAAGGAGAGAACGGAGATTGAGCTCAGCTATGCCAAACAGCTCAG  
 GAATCTTTCAAAGAAATACCAACCCAAGAAGAACTCGAAGGAAGAAGAGGAATACAAGTACACGGCGTGT  
 AAAGCGTTTCTTTCCACCCTGAATGAGTTGAATGACTACGCCGGGACGATGAGGTCATCTCCGAGAACA  
 TGACGTCACAGATCACGGTGGACCTGGTGCCTACGTACAGGAGCTGAAGCAGGAGAGGAAATCGAATTT  
 CCATGATGGACGGAAGGCTCAGCAGCACATAGAGACGTGCTGGAAGCAGCTGGAGTCGAGTAAGAGGAGG  
 TTTGAGCGGGACTGTAAGGAGGCCGACCGTGCACAGCAGTACTTTGAGAAAATGGACGCCGACATCAATG  
 TGACCAAGCGGATGTGAAAAGGCGGACAACAAGCTCAGATGCCAGCAAATGGCAGAGGACAGCAA  
 AGCTGATTACTCCTTAATCCTGCAGAGGTTCAACCAGGAGCAGTGGGAGTACTACCACACCCACATCCCC  
 AACATCTTCCAGAAAATCCAAGAGATGGAGGAGAGGAGGATTGTGCGCATTGGAGAGTCCATGAAGACGT  
 ATGCAGAGGTGGACCGGACGGTATACCATCATCGGGAAGTGCCTGGACGGTATAGTGAAGCGGCCGA  
 GTCTATTGACCAGAAAAACGACTCCCAGCTAGTCGTAGAACCTATAAGTCAGGATTCGAGCCTCCCGGA  
 GACATTGAATTCGAAGATTACACACAGCCCATGAAACGCACGGTGTGAGACAACAGCCTTTCCAGTTCCA  
 AAGAAGGCAAGCCGAGCTCAAGTTTGGAGGCAAGTCCAGAGGCAAGCTCTGGCCGTTTATCAAGAAAA  
 CAAGCTTATGACCCTTTTAAATCCCCCACCAGCCTCCCCCTCCTCCCTGCCTGCCTCACCTCT  
 GCTGTTCCCAACGGCCCCAGTCTCCAAGCAGCAAAGGAACCCCTCTCCACCCTTCAACGAGTTCA  
 TGACTCCAAACCCAAAATCCACTGCTTCCGGAGCCTAAAGCGTGGGCTTTCGCTCAAGTGGGTGCAC  
 CCCGGAAGACTTCAGCAACTTCCCGCTGAGCAGAGAAGGAAAAAACTACAACAGAAAGTGGACGATCTC  
 AATAAAGAGATCCAAAAGGAGACCGACAGAGAGACGCCATCACTAAAATGAAAGATGTGTACCTAAAGA  
 ACCCTCAGATGGGAGACCCGGCCAGCTTGACCACAACTCGCCGAAGTCAACCAGAACATAGAAAACT  
 GCGGCTGGAGGCTCACAAGTTCGAGGCCTGGCTGGCTGAGGTGGAAGGCAGACTCCAGCTCGGAGTGAG  
 CAGGCACGCCGCAAGTGGGCTGTACGACGGCCAGACACACCAGACGGTCACTAACTGCGCCCAGGACC  
 GGGAGAGCCAGATGGTAGTTACACAGAAGAGCAAAGCCAGGAGAGCGAGCACAAGTGTGCCACGGA  
 CTTGACGATGAGTTCGACGATGAGGAGCCGCTTCTGCCATCGGACCTGCAAGGCCCTACACCTTT  
 GAAGGTCAGAACGAAGGCCACATTTGCGTAGTTGAAGGAGAAACGCTGAGCGTATTGAGGAGGACAAAG  
 GCGATGGGTGGACACGCATCCGCAGAAACGAAGACGAGGAGGTTACGTCCCACTTCTACGTCGAAGT  
 CTATTTAGACAAAAACGCCAAAGGTGCTAAGACTTATATT

**ACGCGT**ACGCGGCCGCTCGAGCAGAACTCATCTCAGAAGAGGATCTGGCAGCAAATGATATCCTGGATT  
 ACAAGGATGACGACGATAAGGTTTAA

**Protein Sequence:**

>RR211924 representing NM\_138914  
 Red=Cloning site Green=Tags(s)

MSWGTTELWDQFDNLEKHTQWIDILEKYIKFVKERTEIELSYAKQLRNL SKKYQPKKNSKEEEEYKYTAC  
 KAFLSTLNELNDYAGQHEVISENMTSQITVDLVRYVQELKQERKSNFHDGRKAQQHIETCWKQLESSKRR  
 FERDCKEADRAQQYFEKMDADINVTKADVEKARQAQMRQQAEDSKADYSLILQRFNQEQWEYHHTHIP  
 NIFQKIQEMEERRIVRIGESMKTYAEVDRQVIPIIGKCLDGIKAAESIDQKNDSQLVVEAYKSGFPEPPG  
 DIEFEDYTQPMKRTVSDNSLSSSKEGKPELKFSGKSRGKLPWFIKKNKMLTLLTSPHQPPPPPPASASPS  
 AVPNGPQSPKQKQKEPLSHRFNEFMTSKPKIHCFRSLKRGSLKLVGTPEDFSNFPPEQRRKLLQKQVDDL  
 NKEIQKETDQRDAITKMKDVYLNKPMQMDPASLDHKLAEVTQNIKLRLEAHKFEAWLAEEVGRLPARSE  
 QARRQSGLYDGGTHQTVTNCAQDRESPDGSYTEEQSQSEHKVLATDFDDEFDDEEPLPAIGTKALYTF  
 EQGNEGTISVVEGETLSVIEEDKGDGWTRIRRNEDEEGYVPTSYVEVYLDKNAKGAITYI

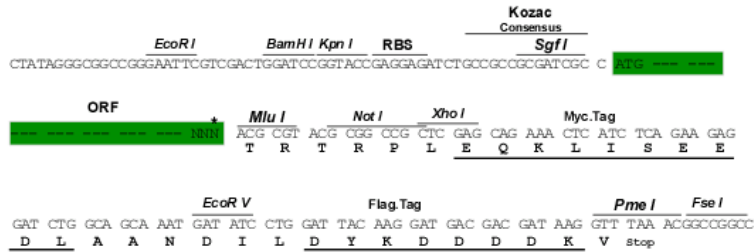
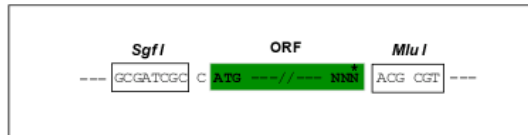
**TRTRPLEQKLI**SEEDLAANDILDYKDDDDKV

**Restriction Sites:**

Sgfl-MluI

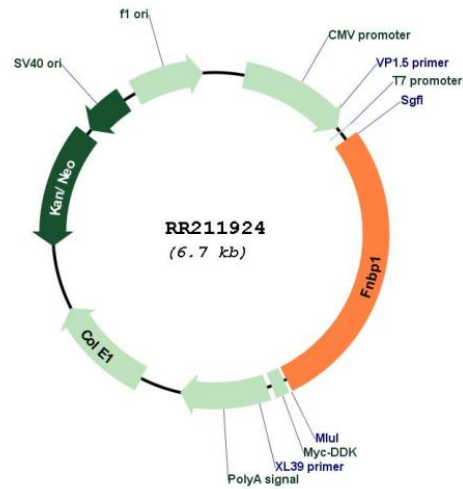
## Cloning Scheme:

Cloning sites used for ORF Shuttling:



\* The last codon before the Stop codon of the ORF

## Plasmid Map:



ACCN: NM\_138914

ORF Size: 1860 bp

<b>OTI Disclaimer:</b>	The molecular sequence of this clone aligns with the gene accession number as a point of reference only. However, individual transcript sequences of the same gene can differ through naturally occurring variations (e.g. polymorphisms), each with its own valid existence. This clone is substantially in agreement with the reference, but a complete review of all prevailing variants is recommended prior to use. <a href="#">More info</a>
<b>OTI Annotation:</b>	This clone was engineered to express the complete ORF with an expression tag. Expression varies depending on the nature of the gene.
<b>Components:</b>	The ORF clone is ion-exchange column purified and shipped in a 2D barcoded Matrix tube containing 10ug of transfection-ready, dried plasmid DNA (reconstitute with 100 ul of water).
<b>Reconstitution Method:</b>	<ol style="list-style-type: none"><li>1. Centrifuge at 5,000xg for 5min.</li><li>2. Carefully open the tube and add 100ul of sterile water to dissolve the DNA.</li><li>3. Close the tube and incubate for 10 minutes at room temperature.</li><li>4. Briefly vortex the tube and then do a quick spin (less than 5000xg) to concentrate the liquid at the bottom.</li><li>5. Store the suspended plasmid at -20°C. The DNA is stable for at least one year from date of shipping when stored at -20°C.</li></ol>
<b>RefSeq:</b>	<a href="#">NM_138914.1</a> , <a href="#">NP_620269.1</a>
<b>RefSeq Size:</b>	1863 bp
<b>RefSeq ORF:</b>	1863 bp
<b>Locus ID:</b>	192348
<b>UniProt ID:</b>	<a href="#">Q8R511</a>
<b>Cytogenetics:</b>	3p12
<b>MW:</b>	71.8 kDa
<b>Gene Summary:</b>	member of the Rho family of GTPases, binds effector protein rapostlin and regulates neurite branch formation [RGD, Feb 2006]