

## Product datasheet for RR211905

### Adgrl1 (NM\_022962) Rat Tagged ORF Clone

#### Product data:

Product Type:	Expression Plasmids
Product Name:	Adgrl1 (NM_022962) Rat Tagged ORF Clone
Tag:	Myc-DDK
Symbol:	Adgrl1
Synonyms:	CL1BA; Lphn1
Vector:	pCMV6-Entry (PS100001)
E. coli Selection:	Kanamycin (25 ug/mL)
Cell Selection:	Neomycin
ORF Nucleotide Sequence:	>RR211905 representing NM_022962 Red=Cloning site Blue=ORF Green=Tags(s)

TTTTGTAATACGACTCACTATAGGGCGCCGGAATTCGTCGACTGGATCCGGTACCGAGGAGATCTGCC  
GCC**CGATCGCC**

ATGGCCCGCTGGCTGCAGCACTCTGGAGTCTCTGTGTGACGACTGTCCTCGTCACCTCTGCTACCCAAG  
GCCTGAGCCGGGCTGGACTCCCATTGGATTGATGCGCCGGGAGCTAGCATGCGAAGGCTACCCATTGA  
GCTGCGGTGCCCGGCAGTGACGTCATCATGGTGGAGAATGCAAATATGGGCGCACAGATGACAAGATC  
TGCATGATGCGACCTTTTCAGATGGAGAACGTGCAAGTGTACCTGCCTGACGCCTTCAAATCATGTCC  
AGAGATGTAATAACCGAACCCAGTGTGTGGTGGTGGCCGGCTCTGACGCCTTTCCTGACCCCTGTCTGG  
AACCTACAAGTACCTGGAGGTGCAGTACGACTGTGTCCCTTACAAAGTGGAGCAGAAAGTCTTCTGTGTGC  
CCAGGGACACTGCAGAAGGTGCTGGAGCCACCTCCACACATGAATCGGAGCACCAGTCTGGCGCATGGT  
GCAAGGACCCACTGCAGGCAGGTGACCGTATCTACGTTATGCCCTGGATCCCCTACCGCACGGACACACT  
GACCGAGTATGCTTCTGGGAGGACTATGTGGCTGCACGCCACACCACCGTACAGACTGCCAACCGT  
GTAGATGGCACTGGCTTTGTGGTATATGATGGTCCGCTTCTATAACAAGGAACGTACTCGCAACATTG  
TCAAATATGACCTGCGGACCCGCATCAAGAGCGGAGAAACAGTCATAAACACAGCCAATACCAGCAC  
CTCACCTTATCGCTGGGAGGCAAAACCGACATTGACCTGGCAGTGGATGAGAACGGGCTGTGGGTATC  
TATGCCACCGAGGGGAACAACGGCGTCTGGTGGTGGAGCCAGCTCAACCCCTACACACTGCGTTTCGAGG  
GCACCTGGGAAACAGGCTATGACAAGCGCTCAGCCTCCAATGCCTTCATGGTGTGTGGTGTCTCTATGT  
GCTGCGCTCTGTTTATGTGGATGACGACAGTGAGGCAGCAGGCAACCGCTGGACTATGCCTTAAACACC  
AATGCAAACCGAGAGGAGCCCGTCACTCTCGCCTTCCCCAACCCCTACCAGTTTGTATCTTCTGTTGACT  
ACAATCCCCGGGACAACAGCTGTATGTGTGGAACAATATTCGTGGTGGCTACAGCCTGGAGTTTGG  
ACCCAGATCCCAGTGTGGCCAGCCACTTCCCACCTCTCAGTACCACCACCACAGCTCGGCCTACG  
CCCCTCACCAGCACAGCCTCACCTGCAGCCACCACTCCACTCCGCGGGGCCCCCTCACCACGCACCCAG  
TAGGTGCCATCAACCAGCTGGGACCTGACCTGCCTCCAGCCACAGCCCCAGCACCCAGTACCCGGCGGCC  
TCCAGCCCCAATCTGCATGTGTCCCCTGAGCTTCTGTGAACCCGAGAGGTCCGGCGGGTCCAGTGG  
CCAGCTACCCAGCAGGTATGCTGGTAGAGACCTTGCCCAAGGGAATCGAGGAATTGCCTCGTTCC



AGTGCCTCCCAGCTCTGGGGCTCTGGAATCCTCGGGGCCCTGACCTCAGCAACTGCACTTCCCCCTGGGT  
CAACCAAGTCGCCAGAAGATCAAGAGTGGAGAGAATGCAGCCAACATTGCTAGTGAGCTGGCCGCCAC  
ACGCGGGGCTCCATCTATGCTGGGGACGTGCTCATCGGTGAAGCTGATGGAGCAACTGCTAGATATCC  
TGGATGCCAGCTCCAGGCCCTACGGCCATTGAACGAGAGTCACTGGCAAGAATAACAATAAGATGCA  
CAAGCGAGAGAGAACCTGCAAGGACTATATCAAGGCTGTGGTGGAGACAGTGGACAACCTGCTTCGGCCA  
GAGGCACCTGAGTCATGAAAAGACATGAATGCCACCGAACAGGTCCATACGGCCACCATTGCTCCTAGATG  
TCTTAGAGGAGGGTGCCTTCTGCTGGCGACAATGTCAGAGAACCTGCTCGCTTCTGGCTGCCAAGCA  
GAATGTGGTCTGGAGGTCACTGCTGCTGAGCACAGAGGGTCAAGTGCAGGAGTTGGTGTCCCCAGGAG  
TATGCCAGTGAGAGCTCCATTCACTGTCCGCCAACACCATCAAGCAGAACAGCCGAATGGTGTGGTGA  
AGTTGTCTTCTCTACAACAACCTGGGCCTTCTTGTCCACGGAGAATGCCACAGTGAAGCTGGC  
AGGTGAGGCAGGGACCGGTGGCCCTGGAGGTGCCTCCCTGGTGGTTAACTCACAGGTCACTGCAGCATCC  
ATCAATAAGGAGTCCAGCCGTGCTTCTCATGGACCCTGTCATCTTACTGTGGCCACTTGGAGGCCA  
AGAACCCTTCAATGCAAACCTGCTCTTCTGGAACACTCAGAGCGCTCCATGCTGGGCTACTGGTCAAC  
CCAGGGCTGCCGACTGGTGGAGTCCAATAAGACCATAACCACATGTCCTGCAGCCACCTACCAACTTC  
GCAGTGCATGGCTCACCGAGAGATCTACCAAGCCGATTAATGAGCTGTTGCTGTCAGTCATCACT  
GGTTGGCATTGTCATCTCCCTGGTCTGTCTGGCTATCTGCATCTCCACCTTCTGCTTCCGCGGGGCT  
GCAGACCGACCGCAACACCATCCACAAGAACCTGTGCATCAACCTCTTCTTGCAGAGCTGCTTCTCCTG  
GTTGGAATAGACAAAACCTCAGTATGAGGTGCCTGCCCTATCTTTCGGGGCTGCTGCACTACTTCTTCC  
TGGCCGCTTCTCCTGGCTGTGCCTAGAGGGCGTGCACCTCTACCTCCTGCTGGTGGTGGTTCGAGAG  
CGAATATTCACGCACCAAGTACTATTACCTGGGCGGCTACTGCTTCCAGCCCTGGTGGTAGGCATCGCA  
GCCGCCATTGACTACCGAAGCTACGGCACTGAGAAGGCCCTGCTGGCTGAGGGTGGATAAATTTTCATCT  
GGAGCTTCATTGGGCCCCTCTCCTTTGTTATTGTGGTGAACCTGGTGTTCCTCATGGTGAACCTGGCACA  
GATGATCCGAAGCTCATCCGTGCTCAAGCCTGACTCCAGCCGCTTGACAACATCAAGTCCCTGGGCGCTG  
GGTGCCATTGCACTGCTTCTCCTGCTGGGCTCACCTGGGCTTTCGGCCCTCTTTCATCAACAAGGAGT  
CAGTAGTAATGGCTTACCTCTTCAACACCTTCAACGCCTTCCAGGGGGTCTTTCATCTTTGCTTTCACTG  
CGCCTTACAGAAAAAGGTGCACAAGGAGTACAGCAAGTGCCTGCGTCACTCCTACTGCTGCATTGCTCC  
CCACCTGGGGGGGCTCACGGCTCCCTTAAGACCTCAGCCATGCGAAGTAACACCCGCTACTACACAGGGA  
CCCAGAGCCGAATCCGGAGGATGTGGAATGACACCGTGAAGGAGCAGACAGAGTCTGCTTTATGGCAGG  
GGACATCAACAGCACCCCACTGAACCGAGGTACCATGGGGAACCACTACTGACCAACCCTGTGCTA  
CAGCCCCGTGGGGCACTAGCCATAACAATACTCATTGCAGAGTCTGTGGCTTCAATCCCTCCTCGC  
CCCCAGTCTTCACTCCCAGGAAGCTACAGGGAACCTAAGCACCCCTTGGGCGCCGGGAAGCCTGTGG  
CATGGACACACTGCCCTTAATGGCAACTTCAACAACAGTACTCCTTGCGAAGTGGTATTCCCTCCG  
GGGGATGGGGTCTGAGCCACCCGAGGCCGAAACCTAGCGGATGCTGCGGCCTTTGAGAAGATGATCA  
TCTCAGAGCTGGTGCACAACAACCTTCCGGGGGCCAGTGGGGGCCCAAAGGTCCTCCACAGAGCCTCC  
TGTGCCACCCGTGCCAGGAGTCACTGAGGACGAGGCTGGTGGGCTGGGGTGTGACCGGGCTGAGATT  
GAACTTCTTACAAGGCCTGGAGGAGCCACTGCTGCTGCCCCGGGCCAGTCCGTGCTGTACCAGAGTG  
ATCTGGATGAGTCGGAGAGCTGTACGGCAGAGGATGGGGCCACCAGCCGGCCCTCTCCTCCCCTCCCG  
CCGGGACTCCCTATGCCAGCGGGCCAACTGCGGGACTCGCCCTCTACCCGGACAGCAGCCCCGAA  
GGCCCTAATGAGGCCCTGCCCTCCCCACCTGCTCCCCCTGGGCCCCAGAAATCTACTACACCTCTC  
GCCCGCCGCCCTGGTGGCTCGGAATCCCTACAGGGTACTACCAGGTGCGGCGGCCCATGAGGG  
CTACCTGGCAGCCCCAGCCTTGAAGGGCCAGGGCCGATGGGGATGGGCAAATGCAGTTGGTCACTAGT  
CTC

ACGCGTACGCGGGCGCTCGAGCAGAACTCATCTCAGAAGAGGATCTGGCAGCAAATGATATCCTGGATT  
ACAAGGATGACGACGATAAGGTTTAA

**Protein Sequence:** >RR211905 representing NM\_022962  
 Red=Cloning site Green=Tags(s)

MARLAAALWSLCVTTVLVTSATQGLSRAGLPFGLMRRELACEGYPIELRCPGSDVIMVENANYGRITDDKI  
 CDADPFQMVNQCYLPDAFKIMSQRNRTQC VVAGSDAFDPDPCPGTYKYLEVQYDCVPYKVEQVFC  
 PGTLLQKVEPTSTHSEHQSGAWCKDPLQAGDRIYVMPWIPYRTDTL TEYASWEDYVAARHTTTYRLPNR  
 VDGTFVVYDGVAFYFNKERTRNIVKYDLRTRIKSGETVINTANYHDTSPYRWGGKTDIDLAVDENGLWVI  
 YATEGNGRLVVSQNLNPLYTLRFEGTWETGYDKRSASNAFMVCGVLYVLSVYVDDDDSEAAGNRVDYAFNT  
 NANREEPVSLAFPNPYQFVSSVDYNPRDNQLYVWNNYFVVRYSLEFGPPDPSAGPATSPPLSTTTTARPT  
 PLTSTASPAATPLRRAPLTHHPVGAINQLGPDLPATAPAPSTRPPAPNLHVSPELFCEPREVRRVQW  
 PATQQGMLVERPCPKGTRGIA SFQCLPALGLWNPGRGDL SNCTSPWVNQVAQKIKSGENAANIASELARH  
 TRGSIYAGDVSSSVKLMEQLLDILDAQLALRPIERESAGKNYNKMKRERTCKDYIKAVVETVDNLLRP  
 EALSWKDMNATEQVHTATMLLDVLEEGAFLLADNVREPARFLAAKQNVLEVTVLSTEGQVQELVFPQE  
 YASESSIQLSANTIKQNSRNGVVKVVFILYNNLGLFLSTENATVKLAGEAGTGGPGGASLVNSQVIAAS  
 INKESSRVFLMDPVIFTVAHLEAKNHFNANCSFWNYSERSMLGYWSTQGCRLESNKTHHTCACSHLTNF  
 AVLMAHREIYQGRINELL SVITWVGIVISLVCLAICISTFCFLRGLQTRNTIHKNLINFLAELLFL  
 VGDIKTQYEVACPIFAGLLHYFFLAAF SWLCLEGVHLYLLLVEVFESEYSRTKYYYLGGYCFPALVVGIA  
 AAIDYRSYGTEKACWLVDNYFIWSF IGPFVSVFVVNLFMLVTLHKMIRSSSVLKPSSRLDNIKSWAL  
 GAIALLFLLGLT WAFGLLFINKESVVMAYLFTTFNAFQGVFIFVFHICALQKVKHKEYSKCLRHSYCCIRS  
 PPGGAHGLKTSAMRSNTRYTGTQSRIRRMWNTVRKQTESSFMAGDINSTPTLNRGTMGNHLLTNPVL  
 QPRGGTSPYNTLIAESVGFNPSSPPVFNPSGYSREPKHPLGGREACGMDTLP LNGNFNNSYSLRSGDFPP  
 GDGGPEPPRGRNLADAAAFEKMI ISELVHNLRGASGGAKGPPPEPPVPPVPGVSEDEAGGPGGADRAEI  
 ELLLYKALEEPLLLPRAQSVLYQSDLDESECTAEDGATSRPLSPPGRDSL YASGANLRDSPSYPDSSPE  
 GPNEALPPPPAPPGPPEIYYTSRPPALVARNPLQGYQVRRPSHEGYLAAPSLEGPDPGDGQMLVTS  
 L

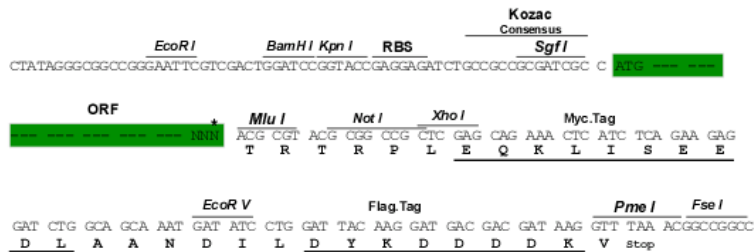
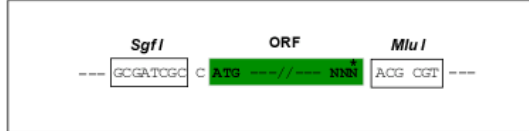
TRTRPLEQKLISEEDLAANDILDYKDDDDKV

**Restriction Sites:**

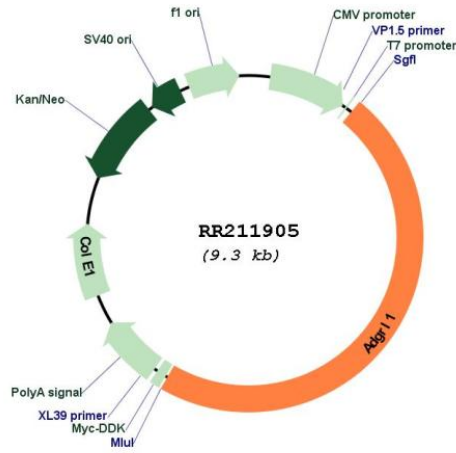
SgfI-MluI

**Cloning Scheme:**

Cloning sites used for ORF Shuttling:



\* The last codon before the Stop codon of the ORF

**Plasmid Map:**


**ACCN:** NM\_022962

**ORF Size:** 4413 bp

**OTI Disclaimer:** The molecular sequence of this clone aligns with the gene accession number as a point of reference only. However, individual transcript sequences of the same gene can differ through naturally occurring variations (e.g. polymorphisms), each with its own valid existence. This clone is substantially in agreement with the reference, but a complete review of all prevailing variants is recommended prior to use. [More info](#)

**OTI Annotation:** This clone was engineered to express the complete ORF with an expression tag. Expression varies depending on the nature of the gene.

**Components:** The ORF clone is ion-exchange column purified and shipped in a 2D barcoded Matrix tube containing 10ug of transfection-ready, dried plasmid DNA (reconstitute with 100 ul of water).

**Reconstitution Method:**

1. Centrifuge at 5,000xg for 5min.
2. Carefully open the tube and add 100ul of sterile water to dissolve the DNA.
3. Close the tube and incubate for 10 minutes at room temperature.
4. Briefly vortex the tube and then do a quick spin (less than 5000xg) to concentrate the liquid at the bottom.
5. Store the suspended plasmid at -20°C. The DNA is stable for at least one year from date of shipping when stored at -20°C.

**RefSeq:** [NM\\_022962.1](#), [NP\\_075251.1](#)

**RefSeq Size:** 5579 bp

**RefSeq ORF:** 4416 bp

**Locus ID:** 65096

**UniProt ID:** [O88917](#)

**Cytogenetics:** 19q11

**MW:** 162.1 kDa

**Gene Summary:** G protein-coupled receptor for alpha-Latrotoxin [RGD, Feb 2006]