

Product datasheet for RR211900

Stk25 (NM_184049) Rat Tagged ORF Clone

Product data:

Product Type: Expression Plasmids
Product Name: Stk25 (NM_184049) Rat Tagged ORF Clone
Tag: Myc-DDK
Symbol: Stk25
Synonyms: MGC94619
Vector: pCMV6-Entry (PS100001)
E. coli Selection: Kanamycin (25 ug/mL)
Cell Selection: Neomycin
ORF Nucleotide Sequence: >RR211900 representing NM_184049
Red=Cloning site Blue=ORF Green=Tags(s)

TTTTGTAATACGACTCACTATAGGGCGGCCGGAATTCGTCGACTGGATCCGGTACCGAGGAGATCTGCC
GCC**CGATCGCC**

ATGGCTCACCTCAGGGGCTTCGCGCACCAGCATTCTCGTGTGGACCCAGAGGAAGCTTCCACCAAGCTTG
ACCGAATTGGCAAGGGCTCATTTGGGGAGGTGTACAAGGGGATCGACAACCACACGAAGGAGGTGGTGGC
CATCAAGATCATTGACCTGGAAGAGGCCGAGGATGAGATTGAGGACATCCAACAGGAGATCACCGTGCTC
AGCCAATGTGATAGCCCTTACATCACTCGCTACTTCGGCTCCTACCTAAAGAGCACCACCAAGCTATGGATTA
TCATGGAGTACCTGGGTGGTGGCTCTGCACTGGACTTGCTGAAACCTGGTCCACTGGAGGAGACCTATAT
TGCCACCATCTTGCGGGAGATCCTGAAAGGCTTGATTATCTGCATTGAGAGCGCAAGATCCACCGAGAC
ATCAAAGCTGCCAACGTGCTGCTCTCAGAGCAGGGTGTGTGAAGCTGGCAGACTTCGGTGTGGCTGGGC
AGCTCACAGACACAAAATCAAGAGGAACACATTTGTGGGTAATCCCTTCTGGATGGCACCTGAGGTTAT
CAAGCAGTCGGCCTATGACTTCAAGGCTGACATCTGGTCCCTGGGCATCACAGCCATCGAGCTGGCCAAG
GGGGAGCCGCCAACTCTGACCTCCACCCTATGCGAGTCCTGTTCTGATTCCCAAGAACAATCCACCCA
CATTGGAAGGCCACCACAGCAAACCTTCAAGGAGTTTGTAGAGCGTGCCTCAATAAGGACCCACGATT
CCGACCCACTGCCAAGGAGCTCCTGAAGCACAAATTCATCACACGTTACACCAAGAAGACCTCCTTTCTC
ACTGAACTTATTGACCGATATAAGCGTTGGAAGTCTGAGGGGCATGGCGAGGAGTCCAGTTCTGAGGATT
CTGACATTGATGGCGAGGCTGAGGATGGGGAGCAGGGTCCCATCTGGACGTTTCTCCAACCATCCGGCC
AAGTCCACATAGCAAGCTGCACAAGGGGACTGCTCTGCACAGCTCACAGAAGCCTGCTGAGCCTATCAAG
AGACAGCCAAGGTCCCAGTGCTTGTCCACACTAGTCCGCTCTGCTTTGGAGAGCTCAAAGAGAAGCACA
AGCAGAGCGGTGGGAGCGTGGGTGCCCTGGAGGAGCTAGAGAATGCCTTCAGCCTGGCTGAGGAATCCTG
TCCTGGCATCTCAGACAAGCTGATGGTGCATCTGGTGGAGCGTGTGCAGAGGTTCTCACACAGCAGAAAC
CACCTGACATCTACCCGC

ACGCGTACGCGGCCGCTCGAGCAGAAACTCATCTCAGAAGAGGATCTGGCAGCAAATGATATCCTGGATT
ACAAGGATGACGACGATAAGGTTTAA



Protein Sequence: >RR211900 representing NM_184049
 Red=Cloning site Green=Tags(s)

MAHLRGFHQHSRVDPEELFTKLDRIKGSFGEVYKIDNHTKEVVAIKIIDLEEADEIEDIQQEITVL
 SQCDSPYITRYFGSYLKSTKLWIIMEYLGGSALDLLKPGLEETYIATILREILKGLDYLHSEKIHHRD
 IKAANVLLSEQGDVYKADFGVAGQLTDTQIKRNTFVGTFFWMAPEVIKQSAYDFKADIWSLGITAIELAK
 GEPPNSDLHPMRVLFILPKNNPPTLEGHHSKPFKEFVEACLNKDPFRPTAKELLKHKFITRYTKKTSFL
 TELIDRYKRWKSEHGEESSSDIDGEAEDGEQGPIWTFPPTIRSPHSLHKGTALHSSQKPAEPIK
 RQPRSQCLSTLVRPVFVGLKEKHQKSGGSVGALEELNAFLAEESCPGISDKLMVHLVERVQRFHSRN
 HLTSTR

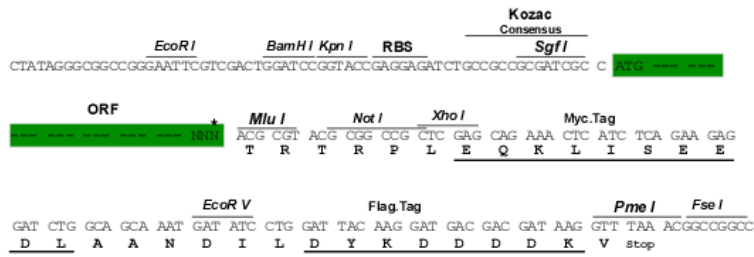
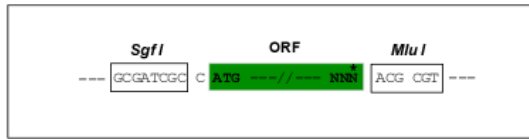
TRTRPLEQKLISEEDLAANDILDYKDDDDKV

Restriction Sites:

Sgfl-MluI

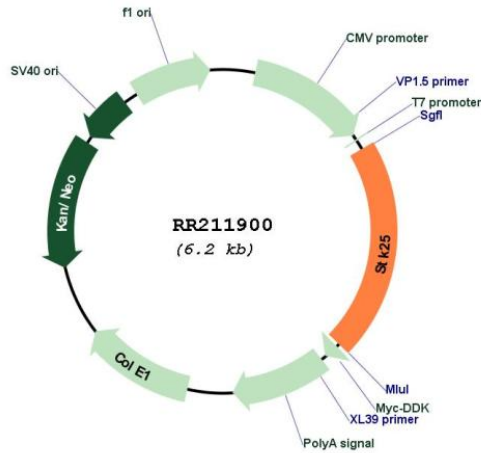
Cloning Scheme:

Cloning sites used for ORF Shuttling:



* The last codon before the Stop codon of the ORF

Plasmid Map:



ACCN:

NM_184049

ORF Size:	1278 bp
OTI Disclaimer:	The molecular sequence of this clone aligns with the gene accession number as a point of reference only. However, individual transcript sequences of the same gene can differ through naturally occurring variations (e.g. polymorphisms), each with its own valid existence. This clone is substantially in agreement with the reference, but a complete review of all prevailing variants is recommended prior to use. More info
OTI Annotation:	This clone was engineered to express the complete ORF with an expression tag. Expression varies depending on the nature of the gene.
Components:	The ORF clone is ion-exchange column purified and shipped in a 2D barcoded Matrix tube containing 10ug of transfection-ready, dried plasmid DNA (reconstitute with 100 ul of water).
Reconstitution Method:	<ol style="list-style-type: none">1. Centrifuge at 5,000xg for 5min.2. Carefully open the tube and add 100ul of sterile water to dissolve the DNA.3. Close the tube and incubate for 10 minutes at room temperature.4. Briefly vortex the tube and then do a quick spin (less than 5000xg) to concentrate the liquid at the bottom.5. Store the suspended plasmid at -20°C. The DNA is stable for at least one year from date of shipping when stored at -20°C.
RefSeq:	NM_184049.1 , NP_908938.1
RefSeq Size:	2021 bp
RefSeq ORF:	1281 bp
Locus ID:	373542
Cytogenetics:	9q36
MW:	48.2 kDa
Gene Summary:	human homolog is a member of the Ste20-like kinase family which is activated by cellular, particularly oxidant, stress but which does not activate either of the stress-activated MAP kinase cascades (p38 and SAPKs) [RGD, Feb 2006]