

Product datasheet for **RR211897**

Wnt8a (NM_001106155) Rat Tagged ORF Clone

Product data:

Product Type:	Expression Plasmids
Product Name:	Wnt8a (NM_001106155) Rat Tagged ORF Clone
Tag:	Myc-DDK
Symbol:	Wnt8a
Vector:	pCMV6-Entry (PS100001)
E. coli Selection:	Kanamycin (25 ug/mL)
Cell Selection:	Neomycin
ORF Nucleotide Sequence:	>RR211897 representing NM_001106155 Red=Cloning site Blue=ORF Green=Tags(s)

TTTTGTAATACGACTCACTATAGGGCGGCCGGAATTCGTCGACTGGATCCGGTACCGAGGAGATCTGCC
GCC**GCGATCGCC**

ATGGTCAGGACCATGGGACACTTTTTTCATGCTGTGGTGGCTGCGGGCATGTGTTATACCGCTTTCGGTG
CTTCTGCCTGGTCAGTGAACAATTTCTGATAACAGGTCCCAAGGCCTATGTGACCTACACCGCCAGCGT
GGCCTTGGGCGCTCAGATGGGCATGGAAGAGTGAAGTTCCAGTTTGCCTGGGAGCGGTGGAAGTGCCT
GAGCACGCTTTCAGTTTTCAACCCACACCAGGCCGAGAGGTGCCACGAGAGAGACATCCTTCATCCATG
CCATCCGCTCTGCTGCAGTCATGTACGCTGTACCAAGAAGTGTAGCATGGGCGACTTGGAAACCTGTGG
CTGTGATGAGTCAAATAATGGGAAAGCAGGTGGCCATGGCTGGATCTGGGAGGCTGCAGCGACAATGTG
GAATTCGGGAAAAGATCTCCAGACTCTTTGTGGACAGTTTGGAGAAAGGAAAGGATGCCAGAGCCCTGA
TGAATCTTCAACAACAGGGCTGGCAGGCTGGCAGTGAAGGCTCTATGAAAAGAACCTGCAAGTGTCA
TGGCATCTCAGGAAGCTGCAGCATCCAGACGTGTTGGCTGCAGCTGGCTGACTTCCGGCAGATGGGAAAT
TACCTAAAGCCAAGTATGACCGCGCGTGAATAATGAGACGGATAAGCGCCAGCTCAGGCTGGCAACA
GAGCTGAAGGCCGCTGGGCTCCCATCGAGGCTTCTTCCAGCGCAGAGGCTGAGCTGATCTTCTTAGA
GGGCTCTCCTGACTACTGCAACCGAATGCCAGCCTGGGCATCTACGGCACAGAGGGGCGGGAGTGCCTG
CAGAACGCCCGCAGTGCTTCCCGTGGGAGCAGCGCAGCTGTGGGCGCCTGTGCACCGAGTGTGGGCTGC
AGGTGGAGGAGAGGCGAACAGAGGCCGTGAGCAGCTGTGACTGCAACTTTCAGTGGTGTTCACGGTCAA
GTGTGGCCAGTGCAGGCGTGTGGTGAACAGGTAAGTACTACTGCACACGCCCTGCAGGTAGTGGGGGCCCGG
GGCACCACCACAAAGTCACTTGTGCT

ACGCGTACGCGGCCGCTCGAGCAGAACTCATCTCAGAAGAGGATCTGGCAGCAATGATATCCTGGATT
ACAAGGATGACGACGATAAGGTTTAA



[View online »](#)

Protein Sequence: >RR211897 representing NM_001106155
 Red=Cloning site Green=Tags(s)

MVRTMGHFFMLWVAAGMCYAFGASAWSVNNFLITGPKAYVTTYASVALGAQMGMEECKQFAWERWNCP
 EHAFQFSTHTRPRGATRETSFIHAIRSAVMYAVTKNCSMGDLETCGCDESNNKGAGGHGWIWGGCSDNV
 EFGEKISRLFVDSLEKGDARALMNLHNNRAGRLAVRSMKRTCKCHGISGSCSIQTCWLQLADFRQMGN
 YLKAKYDRALKIETDKRQLRAGNRAEGRWAPIEAFLPSAEAEELIFLEGGSPDYCNRRNASLGIYGTGRECL
 QNARSASRWEQRSCGRLCTEGLQVEERTEAVSSCDCNFQWCCTVKCGQCRRVNRYYCTRPAGSAGPR
 GTTTKSLVA

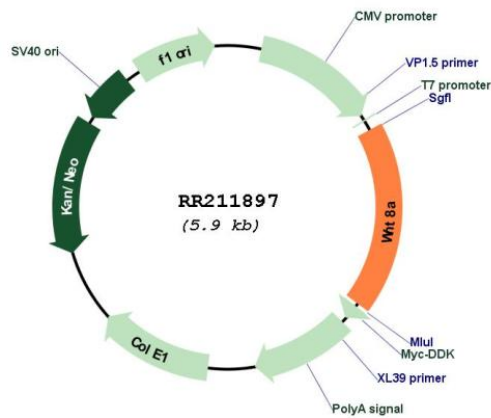
TRTRPLEQKLISEEDLAANDILDYKDDDDKV

Restriction Sites: SgfI-MluI

Cloning Scheme:



Plasmid Map:



ACCN: NM_001106155

ORF Size:	1077 bp
OTI Disclaimer:	The molecular sequence of this clone aligns with the gene accession number as a point of reference only. However, individual transcript sequences of the same gene can differ through naturally occurring variations (e.g. polymorphisms), each with its own valid existence. This clone is substantially in agreement with the reference, but a complete review of all prevailing variants is recommended prior to use. More info
OTI Annotation:	This clone was engineered to express the complete ORF with an expression tag. Expression varies depending on the nature of the gene.
Components:	The ORF clone is ion-exchange column purified and shipped in a 2D barcoded Matrix tube containing 10ug of transfection-ready, dried plasmid DNA (reconstitute with 100 ul of water).
Reconstitution Method:	<ol style="list-style-type: none">1. Centrifuge at 5,000xg for 5min.2. Carefully open the tube and add 100ul of sterile water to dissolve the DNA.3. Close the tube and incubate for 10 minutes at room temperature.4. Briefly vortex the tube and then do a quick spin (less than 5000xg) to concentrate the liquid at the bottom.5. Store the suspended plasmid at -20°C. The DNA is stable for at least one year from date of shipping when stored at -20°C.
RefSeq:	NM_001106155.1 , NP_001099625.1
RefSeq Size:	1692 bp
RefSeq ORF:	1080 bp
Locus ID:	291678
Cytogenetics:	18p12
MW:	39.9 kDa