

Product datasheet for **RR211895**

Stat2 (NM_001011905) Rat Tagged ORF Clone

Product data:

Product Type:	Expression Plasmids
Product Name:	Stat2 (NM_001011905) Rat Tagged ORF Clone
Tag:	Myc-DDK
Symbol:	Stat2
Vector:	pCMV6-Entry (PS100001)
E. coli Selection:	Kanamycin (25 ug/mL)
Cell Selection:	Neomycin



[View online »](#)

ORF Nucleotide Sequence:

>RR211895 representing NM_001011905
 Red=Cloning site Blue=ORF Green=Tags(s)

TTTTGTAATACGACTCACTATAGGGCGGCCGGAATTCGTCGACTGGATCCGGTACCGAGGAGATCTGCC
 GCC**CGATCGCC**

ATGGCGCAGTGGGAGATGTTGCAGAACCTTGACAGTCCATTTCTGGACCAGTTGCATGAGCTCTACTCAC
 AAAGCCTCCTGCCAATGGACGTCCGACAGCACTTGGCTGCCTGGATTGAAGACCAGAAGTGGAGGGAAGC
 TGTA TAGGCAGTGATCATTCCAAGGCCAACATGCTATACTTCAACATCCTGGACCAGCTGAACCGTGG
 GACCACTACAGCTTGGACTCCGACTACCTTTTATTACAGCATAACTTGCGAAAATTAACCGGGACATTC
 AGATGTTTCCAATGGCCCTACCCAGTTGGCTGAGATGATCTTCAATCTTCTCCTGGAAGAGAAAAGGAT
 TCTGAATCAGGCCCAAAGAGCTCAAGAGATGCAGCCAGGCCAGCCCTGAAGCGGCAGGGGAGAGCCAG
 CAGCAGCTTGAATTGAAACAAGAATCCTGGATTTACAGACTGCTGTGGAGGCGTGGTGAGATCCATCA
 GGCAGCTGAAGGATGTGCAGGATGTCTCAGCTTCAGATACACAGTTCTCAATCACAAGAAGACATCGTC
 TTTGGACCCCATCAGAGCCAACAGCGCAGCTTGTGCAGACAACAGCCAATGAACTGGACAGAATGAGA
 AAGGAGGTGCTGGACATCTCAAAGCCCTGGTTGGACGATTAACCACCCTGGTTCGACCTGTTGCTGCCAA
 AGCTGGATGAGTGAAGGCTCAGCAGCAGAAGTCTGCATTGGAGCCCCAGCACCCGAGCTGCAGCTGGA
 TCAGCTGGAACAGTGGTTGACAGCTGGAGCAAAGGTCTTGTCCACCTTCGGCAGCTACTGAAGCAACTG
 AAGGATATGAGTCTTATGCTTCGTTATGAGGGTGACATGTTTGGCCAAGGGGTGGACCTGCAGAATGCC
 AAGTCACGGAGTTACTTCAGCGTCTGCTCAAAGGTCCTTGTAGTGGAAACCCAGCCCTGCATGCCCA
 GACTCTCCATCGACCCCTCATCTGAAGACTGGGAGCAAGTCACTGTCCGAACAAGACTGCTGGTGAGA
 CTCCAGGAAGGCAATGAATCACTCAAAGCAGAAGTCTCCATTGACAGGAATTCAGAGTTGCCAGGCTTCC
 GGAAGTCAACATTCTGACCTCAAACCAGAAGTCTTACCCTTGAGGAAGGCCAGAGACAAGGCTTAAT
 TTGGGACTTCGGCTTCTTGACGCTGGTGGAGCAGCGCTCAGTGGGCGCAGGAAAGGGCAGCAACAAGGGG
 CCGCTGCCTGTGACAGAGGAGCTACACATCATCAGCGCCATGGTGGAGTACGTTTACCAGGGTCTGAAGA
 TGAAGCTGCAGACGGACACTCTCCCTGTGGTGATTATCTTAACATGAACCAACTCTCCATTGCCTGGGC
 CTCCATTCTGTTCAACATGCTCAGCTCAACTCCCAAGGACCAGCAGTTCTTCTGCAAAGTTCGAAA
 GCTCCGTGGAGTTTGTGGGGCTGCAGTTCAGTGGCAGTTCTCCTCTACATCGGCCGAGGCTCGATC
 CTGAGCAGCTGGGCATGTGAGAAACAAGCTGTTGCGAAAGAAGTCAAGACAGAGGATGCAGTGTGTC
 CTGGGCAGACTTCAGCAAGCGAGAGAGCCCCCTGGCAAGATCCCTTCTGGACCTGGCTGGACAAAATT
 CTGGAGCTGGTACATGACCACCTGAAGGATCTCTGGAATGATGGGCGCATCATGGGCTTTGTGAGCCGGA
 GCGAGGAACGCCGACTACTGAAGAAGATGGTGTGGGACCTTCTGCTGCGCTTCAGTGAGACTTCTGA
 AGGGGGCATTACCTGCTCTTGGGTGGAGCACCAGGATGATGATAAAGTCCTCATCTACTCTGTGCAGCCC
 TACACCAAGGAAGTGCTACAGTCACTCCCACTGACAGAAATCATCCGCCACTACCAGGTTCTCGCCGAAG
 AGAATGCTCCTGAGAACCCTCCGCTTCTCTATCCCGCGTCCCTCGGGACGAAGCCTTTGGGTGTTA
 CTACCAGGAAAAAGTTAACTTGAAGAACGGAGGAAATACCTGAAACATAGACTCATCGTGATCTTAAC
 AGACAGGCGGACGAGCTGCAGCAGCCTCTGGAGCTTAAACAGGATCCAGAGTCTTAGAGCTGGATGCAG
 AGCTCATGTGAGTGGAGTTGGCAGCAGACCTGGAGCTGCAGTCAATGCTGCAGGTGGGGCTGGACCT
 GGGCGTAGAGCCGAAACCAGATCCACACTGAGTCCAGCCCCAAAATCCTGCTGGAGCCAGACCAGCA
 CGTGCATTGAATCAGCTGTTGCCAGAGCCGATTGCTCAGGACCTGCAGCAGCTGAACACAGGGGAGA
 TGGAAATCTTCAGAAAACATAAATATTGATGACGTCATGCCCTACGGTGACCCAGTGTGGCTGGCCA
 GAGCATCATAGAGGAGGCTTACAGGTCCTGCCAGCCATTTTGACGTGGATGGACCCTTGATTCCTTCT
 GAAGAC

ACGCGTACGCGGCCGCTCGAGCAGAAACTCATCTCAGAAGAGGATCTGGCAGCAATGATATCCTGGATT
 ACAAGGATGACGACGATAAGGTTTAA

Protein Sequence: >RR211895 representing NM_001011905
Red=Cloning site Green=Tags(s)

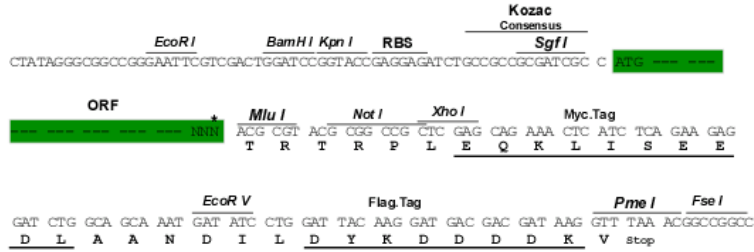
MAQWEMLQNLDSPFLDQLHELYSQSLLPMDVRQHAAWIEDQNWREAVLGS DHSKANMLYFNILDQLNQW
DHYSLDSDYLLQLHNLKFNQDIQMFNGPTQLAEMIFNLLLEEKRIINQAQRAQEMQPRPAPEAAGESQ
QQLEIETRILDLQTAVEALVRSIRQLKDVQDVFSFRYTVLNHKKTSSLDPHQSQQRQLVQTTANELDRMR
KEVLDISKALVGRLTTLVDLLLPKLDEWKAQQKSCIGAPAPQLDQLEQWLTAGAKVLFHLRQLLQKQ
KDSLMLRYEGDMFGQGVDLQNAQVTELLQRLQRFVETQPCMPQTLHRPLILKTGSKFTVRTRLLVR
LQEGNESLKAEVSIDRNSELPGRKFNILTSNQKSLTPEEGQRQGLIWDGFLTLVEQSVGAGKGSNKG
PLPVTEELHIISAMVEVYVYQGLKMKLQTDLPVVIISNMNQLSIAWASILWFNMLSSTPKDQQFFCKVPK
APWSLLGPALSWQFSSYIGRGLDPEQLGMLRNKLFGKNCKTEDALLSWADFSKRESPPGKIPFWTWLDKI
LELVHDHLKDLWNDGRIMGFVSRSEERRLLKMMVSGTFLLRFSETSEGGITCSWVEHQDDDKVLIYSVQP
YTKEVLQSLPLTEIRHYQVLAENAPENPLRFLYPRVPRDEAFGCYYQEKVNLEERRKYLKHLRIVISN
RQADELQQPLELKQDPESLELDAELMSVMELARDLELQSMQVGLDLGVEPKPDPPLSPAPQILLEPDP
RALNQLLPEPDLQDLQQLNTGEMEIFRNNINIDVMPYGPVLAGQSIIEEAYRSCPSHFVDVGDPLIP
ED

TRTRPLEQKLISEEDLAANDILDYKDDDDKV

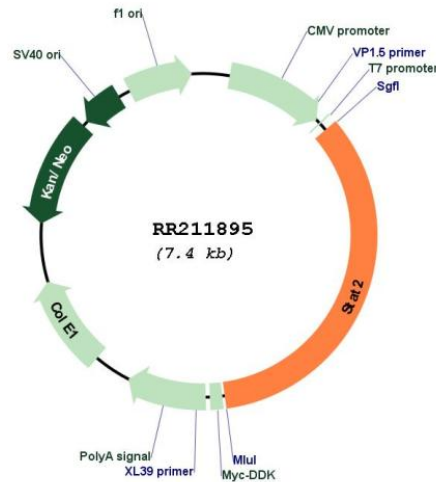
Restriction Sites: Sgfl-MluI

Cloning Scheme:

Cloning sites used for ORF Shutting:



* The last codon before the Stop codon of the ORF

Plasmid Map:


ACCN: NM_001011905

ORF Size: 2526 bp

OTI Disclaimer: The molecular sequence of this clone aligns with the gene accession number as a point of reference only. However, individual transcript sequences of the same gene can differ through naturally occurring variations (e.g. polymorphisms), each with its own valid existence. This clone is substantially in agreement with the reference, but a complete review of all prevailing variants is recommended prior to use. [More info](#)

OTI Annotation: This clone was engineered to express the complete ORF with an expression tag. Expression varies depending on the nature of the gene.

Components: The ORF clone is ion-exchange column purified and shipped in a 2D barcoded Matrix tube containing 10ug of transfection-ready, dried plasmid DNA (reconstitute with 100 ul of water).

Reconstitution Method:

1. Centrifuge at 5,000xg for 5min.
2. Carefully open the tube and add 100ul of sterile water to dissolve the DNA.
3. Close the tube and incubate for 10 minutes at room temperature.
4. Briefly vortex the tube and then do a quick spin (less than 5000xg) to concentrate the liquid at the bottom.
5. Store the suspended plasmid at -20°C. The DNA is stable for at least one year from date of shipping when stored at -20°C.

RefSeq: [NM_001011905.1](#), [NP_001011905.1](#)

RefSeq Size: 3464 bp

RefSeq ORF: 2529 bp

Locus ID: 288774

Cytogenetics: 7q11

MW: 96.9 kDa