

Product datasheet for **RR211850**

Cdh6 (NM_012927) Rat Tagged ORF Clone

Product data:

Product Type:	Expression Plasmids
Product Name:	Cdh6 (NM_012927) Rat Tagged ORF Clone
Tag:	Myc-DDK
Symbol:	Cdh6
Synonyms:	KCAD
Mammalian Cell Selection:	Neomycin
Vector:	pCMV6-Entry (PS100001)
E. coli Selection:	Kanamycin (25 ug/mL)



[View online »](#)

**ORF Nucleotide
Sequence:**

>RR211850 representing NM_012927
 Red=Cloning site Blue=ORF Green=Tags(s)

TTTTGTAATACGACTCACTATAGGGCGGCCGGAATTCGTCGACTGGATCCGGTACCGAGGAGATCTGCC
 GCC**CGCATCGCC**

ATGAGAACTTACCGTACTTCTTGTCTCTTTGGGTCGGCCAGCCCTACCCAACCTTCTCAAACCCGT
 TATCTAAAAGGACTAGTGGCTTCCAGCAAAGAGGAGGGCCCTGGAGCTCTTGCCAACAGCAGGAATGA
 GCTGAGCCGTTCAAAAAGGAGTTGGATGTGGAATCAGTTCTTCTCCTGGAGGAATACACGGGATCAGAT
 TATCAGTACGTCGGCAAGTTACATTCAGACCAGGATAGAGGAGATGGATCACTTAAATATATCCTTTCAG
 GAGATGGAGCGGGAGATCTTTCATTATCAATGAAAACACAGGCGACATAACAAGCCACCAAGAGGCTGGA
 CAGGGAAGAGAAAACCCGTTTACATCCTTCGAGCCCAAGCTATCAACAGAAGGACAGGGAGACCCGTCGAG
 CCTGAGTCTGAATTCATCATCAAGATCCATGACATCAATGATAATGAGCCAATATTCACCAAGGATGTTT
 ACACAGCCACAGTCCCGGAGATGGCAGATGTCGGAACATTTGTAGTCCAAGTCACAGCAACTGATGCCGA
 TGACCCGACGTACGGGAACAGTGTAAAGTCGTGTACAGCATCCTGCAGGGACAGCCCTACTTTTCAGTG
 GAGTCGGAAAACAGGTATCATCAAGACAGCGTTGCTCAACATGGATCGAGAAAACAGAGAGCAGTACCAAG
 TGGTGATTTCAGGCCAAGGACATGGGCGGCCAGATGGGAGGACTGTCGGGGACCACGACCGTGAACATCAC
 ACTGACAGATGTCAATGACAATCCTCCTCGCTTCCCCAGAGTACCTATCAGTTTAAAGACTCCCGAGTCT
 TCTCCACCAGGAACCAATTGGCAGGATCAAAGCCAGTGTGCTGATGTGGGAGAAAATGCAGAGATCG
 AGTACAGCATCACAGACGGTGAGGGACATGATATGTTTGACGTATCACCCGACCAGGAAACCCAGGAAGG
 GATTATAACTGTCAAAAAGCTCTTGGATTTTAAAAGAAGAGAGTGTACACCTCAAGGTGGAAGCCTCC
 AATCCCCACATCGAACCCGATTTCTCTACCTGGTCCGTTCAAAGACTCGGCCACAGTGAAGATCGTGG
 TAGATGACGTAGATGAACCTCCTGTCTTCAGCAAACCGCCTACATCCTACAGATACGAGAGGATGCTCA
 GATAAACACAACCATAGGCTCTGTGCGAGCTCAGGATCCTGACGCTGCCAGGAATCCTGTCAAGTACTCG
 GTGGATAGACACACAGATATGGACAGGATATCAACATTGATTCTGAAAATGGCTCCATTTTTACATCAA
 AACTTCTCGACCGGAAACGCTGTTGTGGCATAACATCACAGTATAGCAACGGAGATTAATAATCCAAA
 GCAAAGCAGCCGCTGCTCTATATATTAAGTTCTCGACGTCAATGACAATGCCCCAGAATTTGCTGAG
 TTCTATGAAACTTTTGTCTGTGAAAAGCAAAGGCGGATCAGCTGATTACAGCCCTGCACGCTGTTGACA
 AGGATGATCCTTACAGTGGACACCAATTCTCTTCTTTGGCCCCAGAAGCAGCCAGTGGCTCTAATTT
 TACCATAAAGACAACAAAGACAACACTGCAGGGATCCTAACTCGAAAAATGGCTATAACAGACACGAG
 ATGAGCACTTATCTCCTGCCGGTGGTCATTTTCAGACAACGACTACCCAGTCCAAAGCAGCACTGGGACAG
 TGAAGTGTCCGGTCTGTGATGTGACCACCATGGAACATGCAGTCTGCCACGCCGAGGCCCTCATCCA
 CCCCACAGGGCTGAGCACAGGGCTCTGGTGGCCATCCTTCTGTGCATCGTGATCCTACTAGTGACAGTG
 GTGCTGTTGCGAGCTCTGAGGCGGCAGCGAAAAGAAAGAGCCTTTGATCATTTCCAAAGAGGACATCAGAG
 ACAACATTGTGAGTTACAACGACGAAGTTGGCGGAGAGGAAGACACCCAGGCCTTTGATATCGGAACCTT
 GAGGAACCCTAAGCCATGGAGACAGCAATCGCGCAGGGACATGGTGCCTGAAGCTCTTTTCTACCACGG
 CGGACTCCAACAGCTCGTGACAACACGGATGTGAGAGATTTTATTAGCCAAAGGTTAAGGAAAATGAACA
 CGGACCCAACAGCCCTCCCTACGACTCCTTGGCCACCTATGCCTACGAAGGCACTGGCTCGTGGCCGA
 CTCCTGAGCTCACTAGAATCAGTGACCACAGATGGAGACCAAGATTATGGCTATTTGAGTGACTGGGGC
 CCTCGGTTCAAAAAGCTGGCAGATATGTACGGAGGGATGGACAGTGACAAAGACTCC

ACGCGTACGCGGCCGCTCGAGCAGAAACTCATCTCAGAAGAGGATCTGGCAGCAAATGATATCCTGGATT
 ACAAGGATGACGACGATAAGGTTTAA

Protein Sequence: >RR211850 representing NM_012927
 Red=Cloning site Green=Tags(s)

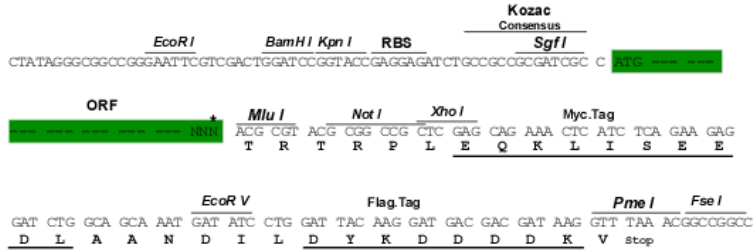
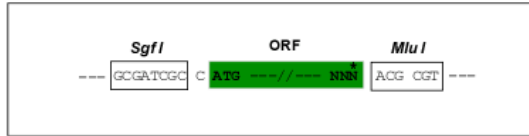
MRTYRYFLLLFWVGQPYPTFSNPLSKRTSGFPAKRRALELSANSRNELSRSKRSWMWNQFFLLEEYTGSD
 YQYVYVGLHSDQDRGDGSLKYILSGDGAGDLFIINENTGDIQATKRLDREEKPVYILRAQAINRRTGRPVE
 PESEFIIKIHDINDNEPIFTKDVTATVPEMADVGTFFVQVTATDADDPTYGNSAKVVYSILQGQPYFSV
 ESETGIIKTALLNMDRENREYQVVIQAKDMGGQMGGLSGTTTNNITLTDVNDNPPRFPQSTYQFKTPES
 SPPGTPIGRIKASDADVGENAEIEYSITDGEHDMFDVITDQETQEGIITVKLLDFEKKRVYTLKVEAS
 NPHIEPRFLYLGPFKDSATVRIVVDDVDEPPVFSKPAYILQIREDAQINTTIGSVAAQDPDAARNPVKYS
 VDRHTDMDRIFNIDSGNGSIFTSKLLDRETLWLNITVIATEINNPQSSRVPLYIKVLDVNDNAPEFAE
 FYETFVCEKAKADQLIQLHAVDKDDPYSGHQFSFLAPEAASGSNFTIQDNKDNTAGILTRKNGYNRHE
 MSTYLLPVVISDNDYPVQSSTGTVTVRVCACDHHGMMQSCHAELIHPTGLSTGALVAILLCIVILLVTV
 VLF AALRRQRKKEPLIISKEDIRDNIIVSYNDEGGGEEDTQAFDIGTLRNPKPWRQSSRDMVPEALFLPR
 RTPTARDNTDVRDFISQRLRKMNTDPTAPPYDSLATYAYEGTGSVADSLSSLESVTDGDDQDYGYSWDWG
 PRFKKLADMYGGMDSKDS

TRTRPLEQKLI SEEDLAANDILDYKDDDDKV

Restriction Sites: Sgfl-MluI

Cloning Scheme:

Cloning sites used for ORF Shuttling:



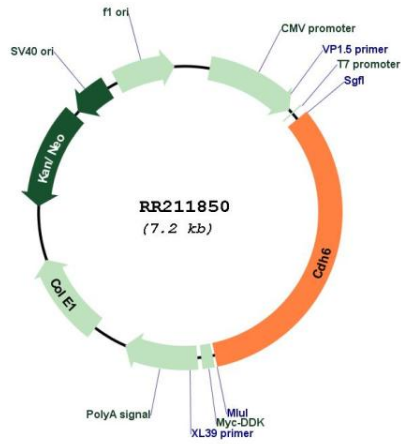
* The last codon before the Stop codon of the ORF

ACCN: NM_012927

ORF Size: 2367 bp

OTI Disclaimer:	<p>Due to the inherent nature of this plasmid, standard methods to replicate additional amounts of DNA in E. coli are highly likely to result in mutations and/or rearrangements. Therefore, OriGene does not guarantee the capability to replicate this plasmid DNA. Additional amounts of DNA can be purchased from OriGene with batch-specific, full-sequence verification at a reduced cost. Please contact our customer care team at custsupport@origene.com or by calling 301.340.3188 option 3 for pricing and delivery.</p> <p>The molecular sequence of this clone aligns with the gene accession number as a point of reference only. However, individual transcript sequences of the same gene can differ through naturally occurring variations (e.g. polymorphisms), each with its own valid existence. This clone is substantially in agreement with the reference, but a complete review of all prevailing variants is recommended prior to use. More info</p>
OTI Annotation:	This clone was engineered to express the complete ORF with an expression tag. Expression varies depending on the nature of the gene.
Components:	The ORF clone is ion-exchange column purified and shipped in a 2D barcoded Matrix tube containing 10ug of transfection-ready, dried plasmid DNA (reconstitute with 100 ul of water).
Reconstitution Method:	<ol style="list-style-type: none"> 1. Centrifuge at 5,000xg for 5min. 2. Carefully open the tube and add 100ul of sterile water to dissolve the DNA. 3. Close the tube and incubate for 10 minutes at room temperature. 4. Briefly vortex the tube and then do a quick spin (less than 5000xg) to concentrate the liquid at the bottom. 5. Store the suspended plasmid at -20°C. The DNA is stable for at least one year from date of shipping when stored at -20°C.
RefSeq:	NM_012927.1 , NP_037059.1
RefSeq Size:	3594 bp
RefSeq ORF:	2370 bp
Locus ID:	25409
UniProt ID:	P55280
Cytogenetics:	2q16
MW:	88.3 kDa
Gene Summary:	may mediate calcium dependent cell adhesion; may play a role in ovarian development [RGD, Feb 2006]

Product images:



Circular map for RR211850