

Product datasheet for **RR211831**

Kat5 (NM_001005872) Rat Tagged ORF Clone

Product data:

Product Type:	Expression Plasmids
Product Name:	Kat5 (NM_001005872) Rat Tagged ORF Clone
Tag:	Myc-DDK
Symbol:	Kat5
Synonyms:	Htatip; Htatip1; Tip60
Vector:	pCMV6-Entry (PS100001)
E. coli Selection:	Kanamycin (25 ug/mL)
Cell Selection:	Neomycin



[View online »](#)

ORF Nucleotide Sequence:

>RR211831 representing NM_001005872
 Red=Cloning site Blue=ORF Green=Tags(s)

TTTTGTAATACGACTCACTATAGGGCGGCCGGAATTCGTCGACTGGATCCGGTACCGAGGAGATCTGCC
 GCC**CGCATCGCC**

ATGGCGGAGTGGGGAGATAATCGAGGGCTGCCGCTGCCCGTCTGCGGCGCAACCAGGACAACGAAG
 ATGAGTGGCCCTGGCTGAGATCCTGAGCGTGAAGGACATCAGTGGCCGGAAGCTTTTCTATGTCCATTA
 CATTGATTTCAACAAACGTCTGGATGAATGGGTGACTCACGAGCGGCTGGACTTAAAGAAGATCCAATTT
 CCCAAGAAAGAAGCCAAGACACCTACCAAGAACGGACTTCTGGGTCCC GCCCCGGCTCTCCGAAAGAG
 AGGTGCCGGCCTCCGCCAGGCCAGCGGAAGACCTTGCCAAATCCCGTCCAGATCACACTCCGCTTCAA
 CCTGCCAAGGAGCGGGAGGCCATTCCAGGTGGCAGCCTGACCAGCCGCTCTCTCCAGCTCTGCCTG
 CAACCAACCACCGCTCAACGAAACGGAAGGTGGAGTGGTTTACCAGCACTCCAGTCCCGAGCGAGA
 CAGCCCCAGCTTCAGTTTTCCCCAGAATGGATCAGCCGTAGGGCAGTGGCAGCACAGCCAGGACGGAA
 GCGGAAATCTAATTGCCGGGCACTGATGAGGATTCTCAGGACAGCTCAGATGGAATACCGTCAGCACCA
 CGCATGACTGGCAGTTTGGTGTCTGACCGGAGCCACGACGACATTGTACCCGGATGAAGAACATTGAGT
 GTATTGAGCTTGGCCGGCACCGCTCAAGCCGTGGTACTTCTCCCGTACCCCAAGAGCTTACCAGCT
 ACCTGTCTCTACCTGTGCGAATTTTGCCTCAAATATGGCCGTAGCCTCAAGTGTCTGCAGCGCCACTTG
 ACCAAATGTGATCTTCGACACCCCTCCAGGCAATGAAATTTACCGCAAGGGCACCATCTCCTTTTTGAGA
 TTGATGGGCGGAAAAACAAGAGTTACTCACAAAACCTGTGTCTTCTGGCCAAGTGTTCCTCGACCACAA
 GACATTGTAATGACACAGACCCCTTCTTTTCTATGTAATGACGGAGTATGACTGCAAGGGCTTCCAC
 ATCGTGGGCTACTTCTCAAGGAAAAGGAGTCCACAGAAGATTACAATGTGGCCTGCATCTTGACTCTGC
 CACCTTATCAGCGCCGGGCTATGGAAAGCTGCTTATTGAGTTCAGCTATGAACTCTGAAAGTAGAAGG
 GAAGACAGGAACCTGAGAAACCCCTGTGAGATCTTGGCCTTCTATCCTACCGAAGTACTGGTCCCAA
 ACCATCTTGAGATCCTGATGGGCTGAAGTCGGAGAGTGGGAGAGACCACAGATCACCATCAATGAGA
 TCAGTGAATCACTAGTATCAAGAAAGAAGATGTCATTTCCACTGCAGTATCTCAATCTCATCAATTA
 CTACAAGGGCCAGTATATCCTCACTCTGTGAGAAGACATCGTGGATGGGCATGAGCGGGCTATGCTCAAG
 CGGCTCCTCGAATTGACTCCAAGTGTCTGCACCTCACTCCAAAGACTGGAGCAAGAGAGGAAAGTGG

ACGCGTACGCGGCCGCTCGAGCAGAAACTCATCTCAGAAGAGGATCTGGCAGCAAATGATATCTGGATT
 ACAAGGATGACGACGATAAGGTTTAA

Protein Sequence:

>RR211831 representing NM_001005872
 Red=Cloning site Green=Tags(s)

MAEVGEIIEGCRPLVLRNQNEDWPLAEILSVKDISGRKLFYVHYIDFNKRLDEWVTHEERLDLKKIQF
 PKKEAKTPTKNGLPGRPGSPEREVPASAQASGKTLPIPVQITLRFNLPKEREIPGGEPDQPLSSSSCL
 QPNHRSTKRKVEVSPATPVSETAPASVFPQNGSARRAVAAQPGRKRKSNCLGTDEDSQDSSDGIPSAP
 RMTGSLVSDRSHDDIVTRMKNIEICIELGRHRLKPWFYSPYPQELTTLVLYLCEFLKYGRSLKCLQRHL
 TKCDLRHPPGNEIYRKGTISFFEIDGRKNKSYSQNLCLLAKCFLDHKTLYYDTPFLFYVMTEYDCKGFH
 IVGYFSKEKESTEDYNVACILTLPPYQRRGYGKLLIEFSYELSKVEGKTGTPEKPLSDLGLLSYRSYWSQ
 TILEILMGLKSESGERPQITINEISEITSIKKEDVISTLQYLNLI NYKGYIL TLESDIVDGERAMLK
 RLLRIDS KCLHFTPKDWSKRGKW

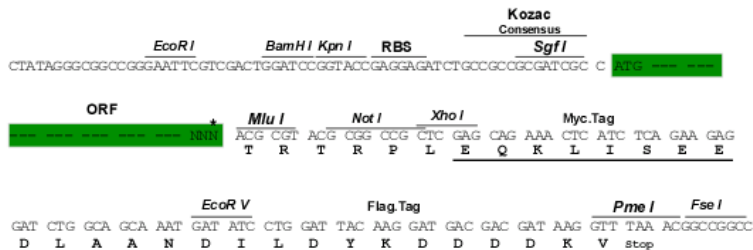
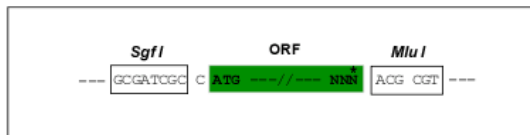
TRTRPLEQKLISEEDLAANDILDYKDDDDKV

Restriction Sites:

Sgfl-MluI

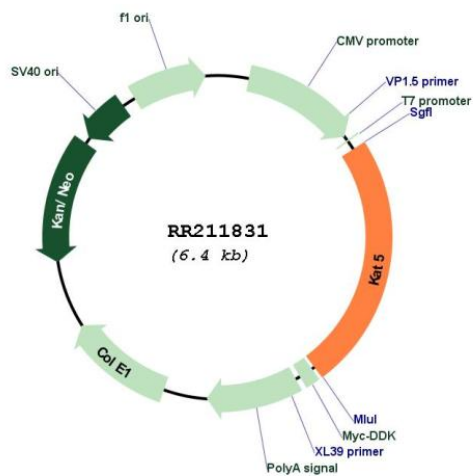
Cloning Scheme:

Cloning sites used for ORF Shutting:



* The last codon before the Stop codon of the ORF

Plasmid Map:



ACCN: NM_001005872

ORF Size: 1539 bp

OTI Disclaimer:	<p>Due to the inherent nature of this plasmid, standard methods to replicate additional amounts of DNA in E. coli are highly likely to result in mutations and/or rearrangements. Therefore, OriGene does not guarantee the capability to replicate this plasmid DNA. Additional amounts of DNA can be purchased from OriGene with batch-specific, full-sequence verification at a reduced cost. Please contact our customer care team at custsupport@origene.com or by calling 301.340.3188 option 3 for pricing and delivery.</p> <p>The molecular sequence of this clone aligns with the gene accession number as a point of reference only. However, individual transcript sequences of the same gene can differ through naturally occurring variations (e.g. polymorphisms), each with its own valid existence. This clone is substantially in agreement with the reference, but a complete review of all prevailing variants is recommended prior to use. More info</p>
OTI Annotation:	This clone was engineered to express the complete ORF with an expression tag. Expression varies depending on the nature of the gene.
Components:	The ORF clone is ion-exchange column purified and shipped in a 2D barcoded Matrix tube containing 10ug of transfection-ready, dried plasmid DNA (reconstitute with 100 ul of water).
Reconstitution Method:	<ol style="list-style-type: none"> 1. Centrifuge at 5,000xg for 5min. 2. Carefully open the tube and add 100ul of sterile water to dissolve the DNA. 3. Close the tube and incubate for 10 minutes at room temperature. 4. Briefly vortex the tube and then do a quick spin (less than 5000xg) to concentrate the liquid at the bottom. 5. Store the suspended plasmid at -20°C. The DNA is stable for at least one year from date of shipping when stored at -20°C.
RefSeq:	<u>NM_001005872.1</u> , <u>NP_001005872.1</u>
RefSeq Size:	1975 bp
RefSeq ORF:	1542 bp
Locus ID:	192218
UniProt ID:	<u>Q99MK2</u>
Cytogenetics:	1q43
MW:	58.6 kDa
Gene Summary:	human homolog facilitates Myc-induced histone acetylation [RGD, Feb 2006]