

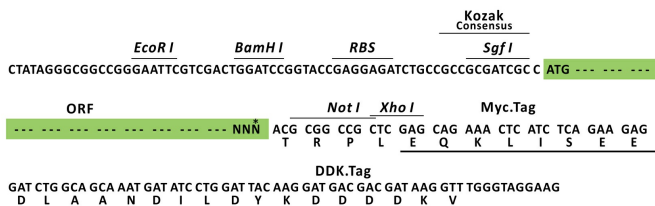
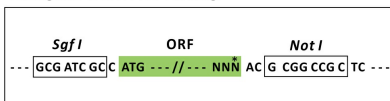
Product datasheet for RR211829L3

Sidt2 (NM_001108142) Rat Tagged Lenti ORF Clone

Product data:

Product Type:	Expression Plasmids
Product Name:	Sidt2 (NM_001108142) Rat Tagged Lenti ORF Clone
Tag:	Myc-DDK
Symbol:	Sidt2
Synonyms:	RGD1308311
Mammalian Cell Selection:	Puromycin
Vector:	pLenti-C-Myc-DDK-P2A-Puro (PS100092)
E. coli Selection:	Chloramphenicol (34 ug/mL)
ORF Nucleotide Sequence:	The ORF insert of this clone is exactly the same as(RR211829).
Restriction Sites:	SgfI-NotI
Cloning Scheme:	

Cloning sites used for ORF Shuttling:



* The last codon before the Stop codon of the ORF.

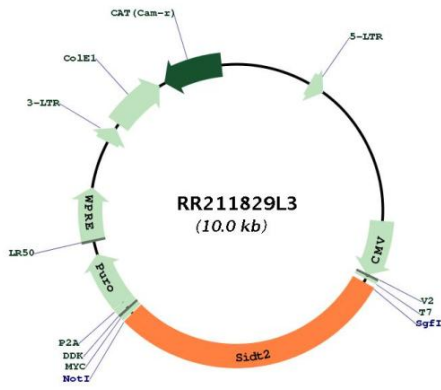
ACCN:	NM_001108142
ORF Size:	2937 bp



[View online »](#)

OTI Disclaimer:	The molecular sequence of this clone aligns with the gene accession number as a point of reference only. However, individual transcript sequences of the same gene can differ through naturally occurring variations (e.g. polymorphisms), each with its own valid existence. This clone is substantially in agreement with the reference, but a complete review of all prevailing variants is recommended prior to use. More info
OTI Annotation:	This clone was engineered to express the complete ORF with an expression tag. Expression varies depending on the nature of the gene.
Components:	The ORF clone is ion-exchange column purified and shipped in a 2D barcoded Matrix tube containing 10ug of transfection-ready, dried plasmid DNA (reconstitute with 100 ul of water).
Reconstitution Method:	<ol style="list-style-type: none">1. Centrifuge at 5,000xg for 5min.2. Carefully open the tube and add 100ul of sterile water to dissolve the DNA.3. Close the tube and incubate for 10 minutes at room temperature.4. Briefly vortex the tube and then do a quick spin (less than 5000xg) to concentrate the liquid at the bottom.5. Store the suspended plasmid at -20°C. The DNA is stable for at least one year from date of shipping when stored at -20°C.
RefSeq:	NM_001108142.1 , NP_001101612.1
RefSeq Size:	4741 bp
RefSeq ORF:	2940 bp
Locus ID:	315617
UniProt ID:	D3ZEH5
Cytogenetics:	8q22
Gene Summary:	Mediates the translocation of RNA and DNA across the lysosomal membrane during RNA and DNA autophagy (RDA), a process in which RNA or DNA is directly imported into lysosomes in an ATP-dependent manner, and degraded. Involved in the uptake of single-stranded oligonucleotides by living cells, a process called gymnosis (By similarity). In vitro, mediates the uptake of linear DNA more efficiently than that of circular DNA, but exhibits similar uptake efficacy toward RNA and DNA. Binds long double-stranded RNA (dsRNA) (500 - 700 base pairs), but not dsRNA shorter than 100 bp (By similarity).[UniProtKB/Swiss-Prot Function]

Product images:



Circular map for RR211829L3