

Product datasheet for **RR211820**

Dsc3 (NM_001107402) Rat Tagged ORF Clone

Product data:

Product Type:	Expression Plasmids
Product Name:	Dsc3 (NM_001107402) Rat Tagged ORF Clone
Tag:	Myc-DDK
Symbol:	Dsc3
Vector:	pCMV6-Entry (PS100001)
E. coli Selection:	Kanamycin (25 ug/mL)
Cell Selection:	Neomycin



[View online »](#)

ORF Nucleotide Sequence:

>RR211820 representing NM_001107402
 Red=Cloning site Blue=ORF Green=Tags(s)

TTTTGTAATACGACTCACTATAGGGCGGCCGGAATTCGTCGACTGGATCCGGTACCGAGGAGATCTGCC
 GCC**CGCATCGCC**

ATGGCGATGGCGATGGCGGTCCCTGAGCTCCGGAGCCTGCCGTACAGGGCACCATTACAGAAAGTTCCTGC
 TGACCCTCTGGGTCTTCAGTTTTGTTGGTGAAGCCTGTAAGATGTGACCTTTATGTACCTTCAACACT
 AGAGGCAGACAAGATCATCGGAAGAGTTAGTTTGAAGGAGTGTCTCAGCTCGGCTGATGGTATCATGCCA
 AGCGATCCTGACTTCAGAGTTCTAGATGACGGGTGAGTTTATCCTACCAGAGCTGTTGTGTGTCTGATG
 AGAAAAGATCATTTACCATTGAGCTTTCTGATTCAAAGATGCGGAAACAGAAAGAGATCACTGTAATCCT
 GGAGCGCCAGAAGGAGGTAAATGATGAAAAGACACACTAATGAAACTGTCTCAGAAGAGCCAAGAGGAGA
 TGGGCACCCATTCGTGTTCAATGCAAGAAAATTCCTGGGTCCCTCCATTGTTTCTCAACAGGTTT
 AGTCTGATTGAGCTCAGAACTACAATATCTTCTACTCAATAAGCGGGCGTGGAGTTGACCAAGAACCCT
 GAATTTGTTTTTTCATTGAGAGAGACACTGGGAATCTTTATTGACTCGGCTGTGGATCGTGAAGAATAT
 GATGTTTTTATTGATTGCCTATGCATCCACTGCAGATGGCTACTCAGCAGATTTACCTCTCCCCCTGC
 CCATCAAAGTAGAGGATGAAAATGACAATTACCCTCTTTTTACAGAAGCAATTTACAATTTTGAAGTTC
 AGAAAAGCAGTAGACTTGGTACCGTGGTGGGAACGGTGTGTGCTACGGACAAAAGTGAACCCGATACGATG
 CACACGCGCCTCAAGTACAGCATCTTGGAGCAGAGTCCGCGTCCCAGGGCTCTTTTCTGTGCACCCTG
 ACACCGCGCTCATCACCCTGTCTCTACTACATGGACAGAGAGGTTGTAGACAAGTACAAAAGTATCTT
 GAAAGTCCAGGACATGAATGGCCAATCTTTGGACTCATCAGCACATCACTTGTATCATAACAGTGCAA
 GATTTCAATGACAATGCTCCACATTCAGACAAAATGCTTATGAACTTCTGTGGAGGAAAATACATATA
 ATGTTGAGATCTTGCGCATACCTGTAGATGATAAGGACATGGTTAACAGTGCCAACTGGAAGGCAAAATTT
 CACCATCTTAAAAGGAAAATGAAAACGGCTGGTTCAAATCACGACAGACCCAGCGACAAAATGAGGGTGT
 CTGTGTGTCGTGAAGCCACTGGATTATGAAGAAAATCGTCAAGTACCCTAGAGATCGGTGTGAACAACG
 AAGCTCCATTCATTAGAGATGTTGCAAGCCGAATACCCACCATGAATCGGGCCATGGTTACAGTCCAAGT
 GAGGGATCAGAATGAGGGGCCGGAATGCAAGCCCCGTGAGCAGATTGTACGGATCAAAGAGAAGTACAGCA
 ATTGGGTCTAAGATCAATGGCTACAAGGCCTATGACCCCGAAAACCAAGAATAGCAATGGTTTAAAGTACA
 AAAAATGCAGGATCCTAAAGACTGGGTGAGCATTGAAGAAGTTTCAGGATCACTCACCATATCAAAAAT
 CCTGGACAGAAAATCATGGCTCCAAGAAAATGACCTATACAATATTACAGTCATGGCAATGACCAAGAG
 GGTAGATCATGCACAGGGACGCTTGCAGTGAACATTGAGGATATGAATGACAACGCACCAGAGATAATTC
 AAGATGACATTGTCATCTGCAAGCAAGGATGGGTTATACAGACATTTACGCTGTGGATCCTGATGAACC
 TATTCACGGCCCTCCCTCCAGTTCGCCTTGGCAAGCTCTTCTCCAGAAGTCAACAGAATCTGGACCCTC
 AACCAAGTTAATGATACAGCTGCCCGCCTGTCTATCAGAAAACCGCGGATGTTACAGATATACTCCGTTT
 CTGTAAGTGAACAGACAGAGCAGGCAATCTGCGACCAAGATCTTGAGAGTTAACCTGTGCGATTGTAC
 TCACCCAGCCAGTGTCTGCTCAGATCAAGAAGAGCGGGGATCACCTGGGGAAGTGGGCAATCCTTGCC
 ATCTTGCTGGGCATCGCTCTGCTATTCTCGGTACTGCTAACTTTAGTATGTGGGTTGTTACTGCTCAA
 AAGGAAAACATTTTCTGAAGATTTAGCACAGCAAACTTAATTATATCAAATACCGAAGCACCCGGGA
 CGACAGAGTGTGCTCTGCAATGGATTACCACCCACACTGCCAACAACTCCAGCCAAGGCTTCTGTGGC
 ACAATGGGGTCAGGAATGAGGAACGGTGGCAGGAGACCATCGAGATGATGAAAGGCCACCAGACCTTGG
 ACTCCTGCCGTGTTGCTGGGCATCACCACACCCTGGACTCCTGCAGGGGAGGACACATGGAACCCGACAA
 CTGCAGATACACGTAAGTACTCAGAGTGGCACAGCTTCACTCAGCCCCGACTCGGCGAAAAATTGCATGTGT
 AATCAGAACGAAGACCACATCCCATCTCAAGACTATGTCCTCACCTATAACTACGAAGGCAGGGGATCTC
 CAGCCGGTTCTGTAGGTTGCTGCAGTAAAAGCAGGAAGAAGAGGGACTCGACTTTTTAAACAATTTGGA
 GCCAAATTTCTTACATTGGCAGAAACATGTACAAAGAGA

ACGCGTACGCGGCCGCTCGAGCAGAACTCATCTCAGAAGAGGATCTGGCAGCAAATGATATCCTGGATT
 ACAAGGATGACGACGATAAGGTTTAA

Protein Sequence: >RR211820 representing NM_001107402
Red=Cloning site Green=Tags(s)

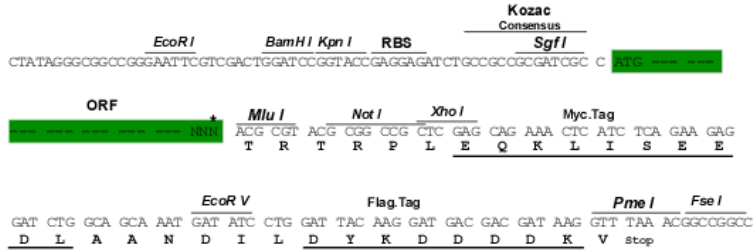
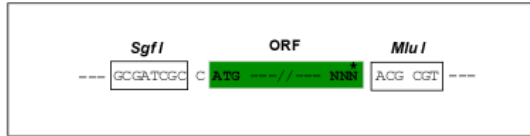
MAMAMAVPELRSLPYRAPFTKFLTLWVFSVGEACKDVTFFYVPSTLEADKIIGRVSLKECLSSADGIMP
SDPDFRVLDDGSVYPTRAVVLSDEKRSFTIQLSDSKMRKQKEITVILERQKEVMMKRHTNETVLRRAKRR
WAPIPCSMQENSLGPFPLFLQQVQSDSAQNYNIFYSISGRGVDQEPLNLFIERDTGNLYCTRPVDREEY
DVFDLIA YASTADGYSADLPLPLPIKVEDENDNYPLFTEAIYNFEVPSSRLGTVVGTVCATDKDEPDTM
HTRLKYSILEQSPSPGLFSVHPDTGVITTVSHYMDREVVDKYKLILKVQDMNGQFFGLISTSTCIITVQ
DSNDNAPTFRQNA YETSVEENTYNVEILRIPVDDKDMVNSANWKANFTILKGNENGWFKITTD PATNEGV
LCVVKPLDYEENRQVTLEIGVNNEAPFIRDVASRIPTMNRAMVTVQVRDQNEGPECKPREQIVRIKENSA
IGSKINGYKAYDPETKNSNGLRYKKLQDPKDWVSEEVSGSLTISKILDREIMAPRNDLYNITVMAIDQE
GRSCTGLAVNIEDMNDNAPEIIQDDIVICKPRMGYTDISAVDPDEPIHGPPFQFALASSSPEVNRITWL
NQVNDTAARLSYQKTADVQIYSVPVTVDRAGQSATKILRVNLC DCTHPSQCLLRSRRAGITLGKWA ILA
ILLGIALLFVLLTLVCGVVTAQKGKHPEDLAQQNLIISNTEAPGDDRVC SANGFTTHTANNSSQGF CG
TMGSGMRNGGQETIEMMKGHQTL DSCR VAGHHHTLDSCRGGHMETDNCRYTYSEWHSFTQPRLGEKLHVC
NQ NEDHIPSQDYVLTYN YEGRGSPAGSVGCCSEKQEEGLDFLNNLEPKFLTLAETCTKR

TRTRPLEQKLISEEDLAANDILDYKDDDDKV

Restriction Sites: Sgfl-MluI

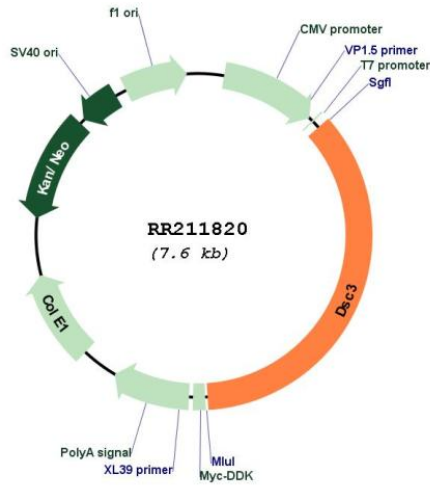
Cloning Scheme:

Cloning sites used for ORF Shuttling:



* The last codon before the Stop codon of the ORF

Plasmid Map:



ACCN:	NM_001107402
ORF Size:	2700 bp
OTI Disclaimer:	The molecular sequence of this clone aligns with the gene accession number as a point of reference only. However, individual transcript sequences of the same gene can differ through naturally occurring variations (e.g. polymorphisms), each with its own valid existence. This clone is substantially in agreement with the reference, but a complete review of all prevailing variants is recommended prior to use. More info
OTI Annotation:	This clone was engineered to express the complete ORF with an expression tag. Expression varies depending on the nature of the gene.
Components:	The ORF clone is ion-exchange column purified and shipped in a 2D barcoded Matrix tube containing 10ug of transfection-ready, dried plasmid DNA (reconstitute with 100 ul of water).
Reconstitution Method:	<ol style="list-style-type: none">1. Centrifuge at 5,000xg for 5min.2. Carefully open the tube and add 100ul of sterile water to dissolve the DNA.3. Close the tube and incubate for 10 minutes at room temperature.4. Briefly vortex the tube and then do a quick spin (less than 5000xg) to concentrate the liquid at the bottom.5. Store the suspended plasmid at -20°C. The DNA is stable for at least one year from date of shipping when stored at -20°C.
RefSeq:	NM_001107402.1 , NP_001100872.1
RefSeq Size:	2878 bp
RefSeq ORF:	2703 bp
Locus ID:	307563
Cytogenetics:	18p12
MW:	100.7 kDa