

## Product datasheet for **RR211792**

### **Cdh2 (NM\_031333) Rat Tagged ORF Clone**

#### **Product data:**

Product Type:	Expression Plasmids
Product Name:	Cdh2 (NM_031333) Rat Tagged ORF Clone
Tag:	Myc-DDK
Symbol:	Cdh2
Synonyms:	N-cadherin
Mammalian Cell Selection:	Neomycin
Vector:	pCMV6-Entry (PS100001)
E. coli Selection:	Kanamycin (25 ug/mL)



[View online »](#)

**ORF Nucleotide Sequence:**

>RR211792 representing NM\_031333  
 Red=Cloning site Blue=ORF Green=Tags(s)

TTTTGTAATACGACTCACTATAGGGCGGCCGGGAATTCGTCGACTGGATCCGGTACCGAGGAGATCTGCC  
 GCC**CGCATCGCC**

ATGTGCCGGATAGCGGGAGCGCCGCGGACCCTGCTGCCGTTCTGGCGCCTTGCTTCAGGCATCTCTGG  
 AGGCTTCTGGTGAACCTTGCATTATGCAAGACTGGATTTCTGAAGATGTTTACAGCGCGGTCTTACCGAA  
 GGACGTGCACGAAGGCCAGCCTCTTCTCAATGTGAAATTCAGCAACTGCAATAGAAAAAGGAAAGTTCAG  
 TATGAAAGCAGTGAACCAGCAGATTTCAAGGTGGATGAGGACGGCACAGTGTACGCTGTGAGAAGCTTCC  
 CTCTCTCTGCAGAGCAGGCAAAGTTCTGATATATGCCAAGACAAGAAACCCAGGAAAAGTGGCAGGT  
 AGCTGTTAACCTGAGCCTGGAGCCAGCCTGACTGAGGAGCCGATGAAGGAACCATGAAATGAAGAA  
 ATAGTATCCCTAGACAACCTCGCAAGCACAGCGGACGCTACAAAGGCAGAAGAGACTGGGTATCC  
 CTCGGATCAACTTGCCAGAAAACCTCCAGAGGACCCTTCCGCAAGAGCTTGTGAGAATCAGTCTGATAG  
 AGATAAGAACCTATCTCTGAGATACAGTGTCACTGGGCCAGGAGCTGACCAGCCTCCAACGGGCATCTTC  
 ATCATCAACCCCATCTCTGGACAACCTGTAGTCAAAAGCCTCTGGACAGAGAACCTGATAGCCCGGTTTC  
 ACCTGAGGGCACATGCAGTTGACATCAATGGCAATCAAGTGGAGAACCCATTGACATCGTCATCAATGT  
 CATCGACATGAATGATAACAGACCTGAGTTTCTGCACCAGGTTTGGAAATGGGTCTGTTCCAGAGGGATCA  
 AAGCCTGGGACGTATGTGATGACTGTCACTGCCATTGATGCAGATGACCCAAATGCCCTGAATGGGATGC  
 TGAGGTACAGGATCCTCTCCAGGCACCCAGCACCCCTTCTCCCAACATGTTTACAATCAACAACGAGAC  
 CGGGGACATCACTACTGTGGCAGCTGGTCTGGACCGAGAGAAAGTGAACAGTATACGTTAATAATTCAA  
 GCCACTGACATGGAAGGCAATCCCACTTACGGCCCTTCAAACACAGCCACAGCCGTATCACAGTGACAG  
 ATGTCAATGACAATCCTCCAGGTTTACTGCCATGACCTTCTACGGAGAAGTCCCTGAGAACAGAGTGA  
 TGTCAATGTAGCCAACCTGACTGTCAACGACAAGGACCAGCCCCACACACCAGCCTGGAATGCGGCATAC  
 AGAATCAGTGGTGGAGACCCACGGGAAGTTTGGCATCCTGACAGACCCCAACGCAATGATGGCCTAG  
 TCACAGTGGTAAAACCAATTGACTTTGAAACGAATAGGATGTTTGTCTCACTGTTGCTGCAGAAAACCA  
 AGTGCCATTAGCTAAGGGGATCCAGCACCCACCTCAGTCGACAGCCACGGTGTCTGTGACAGTTATTGAT  
 GTCAATGAAAATCCTTATTTTGGCCAAATCCTAAAATCATTGCAAGAGGAAGGCCTCCACGCAGGTA  
 CCATGCTGACCACTCTCACTGCTCAGGACCCCGATCGATATATGCAACAGAATATCAGATACACAAAGTT  
 ATCTGACCCTGCCAACTGGCTGAAAATAGACCCTGTGAACGGGCAGATCACCACTATCGTGTCTGGAC  
 AGAGAGTCGCAATGTCAAAAACAACATCTATAATGCTACCTTCTTCTGCTGACAATGGAATCCCTC  
 CTATGAGTGGAACAGGAACGCTGCAAACTATTTACTTGATATCAATGACAACGCCCTCAGGTGTTACC  
 TCAAGAGGCCGAGACTTGTGAAACTCCAGAACCAATTAATTAACATCACAGCGCTTGATTATGACATA  
 GACCCCAATGCAGGGCCCTTTGCATTTGACCTTCCCTTATCCCAAGTACCAATAAAAGAAACTGGACCA  
 TCACCCGGCTTAAGGGTATTTTGTCTCAGTCAATTTAAAGATCAAGTTTTTGAAGCTGGCATCTATGA  
 AGTTCCCATCGTTATCACAGATTCAGGGAATCCCCCAAGTCCAATATTCGATCCTGCGTGTGAAAAGTT  
 TGCCAATGTGACTCCAATGGAGACTGCACCGACGTAGACAGGATCGTGGGTGCAGGGCTTGGCACGGGG  
 CCATCATCGGATACTTCTGTGTATCATCATCTGCTGATCCTTGTCTCATGTTCTGTTGATGGATGAA  
 ACGCCGGGATAAAGAGCGCCAGGCAAGCAGCTTTAATAGACCAGAAGATGATGTAAGAGATAACATA  
 TTGAAATATGATGAAGAAGGTGGAGGAGAGGAAGACCAGGACTATGACTTGAGCCAGCTCCAGCAACCAG  
 ATACCGTGGAGCCTGATGCCATCAAACCTGTGGGAATCAGACGGCTAGACGAGAGGCCTATCCACGCTGA  
 GCCACAATATCCAGTCCGATCCGAGCCCCACACCCTGGGGATATTGGGGACTTCATTAATGAGGGCCTT  
 AAAGCTGCTGACAATGACCCACGGCGCCACCATATGACTCCCTTTTAGTCTTCGACTATGAGGGCAGCG  
 GCTCCACGGTGGCTCCTTGAGCTCTCAACTCCTCCAGCAGCGGGGGACCAGGACTATGACTACCT  
 GAATGACTGGGGACCCGCTTCAAGAAGCTGGCCGACATGTATGGTGGTGGTATGAC

**ACGCGT**ACGCGGCCGCTCGAGCAGAAACTCATCTCAGAAGAGGATCTGGCAGCAAATGATATCCTGGATT  
 ACAAGGATGACGACGATAAGGTTTAA

**Protein Sequence:** >RR211792 representing NM\_031333  
 Red=Cloning site Green=Tags(s)

MCRIAGAPRTLLPLLAALLQASLEASGELALCKTGFPEDEVYSAVLPKDVHEGQPLLNVKFSNCNRKRKVQ  
 YESSEPADFVKVDEEDGTVYAVRSFPLSAEQAKFLIYAQDKETQEKWQVAVNLSLEPSLTEEPMKEPHEIEE  
 IVFPRQLAKHSGRLQRQKRDWVIPPINLPENSRGPFQELVRIIRSDRDKNLSLRYSVTGPADQPPTGIF  
 IINPISGQLSVTKPLDRELIARFHLRAHAVDINGNQVENPIDIVINVIDMNDNRPEFLHQVWNGSVPEGS  
 KPGTYVMTVTAIDADDPNALNGMLRYRILSQAPSTPSNMFTINNETGDIITVAAGLDREKVQQYTLIIQ  
 ATDMEGNPTYGLSNTATAVITVDVNDNPEFTAMTFYGEVPENRVDVIVANLTVTDKDPHTPAWNAAY  
 RISGGDPTGRFAILTDPNSNDGLVTVVKPIDFETNRMFVLTVAENQVPLAKGIQHPPQSTATVSVTVID  
 VVENPYFAPNPKIIRQEEGLHAGTMLTTLTAQDPDRYMQQNIRYTKLSDPANWLKIDPVNGQITTIIVLD  
 RESPNVKNNIYNATFLASDNGIPPMSGTGLQIYLLDINDAPQVLPQEAETCETPEPNSINITALDYDI  
 DPNAGPFAFDLPLSPVTIKRNWTITRLKGDFQLNLIKIFLEAGIYEVPIVITDSGNPPKSNISILRVKV  
 CQCDSDNGDCTDVRIVGAGLGTGAIIAILLCIIILLILVLMFVVMKRRDKERQAKQLLIDPEDDVRDNI  
 LKYDEEGGGEEDQDYDLSQLQPPDTEPDAIKPVGIRRLDERPIHAEPQYPVRSAAHPHGDIGDFINEGL  
 KAANDPTAPPYDLSLVFDYEGSGSTAGSLSSLNSSSSGGDQDYDYLNDWGRPFKKLADMYGGGDD

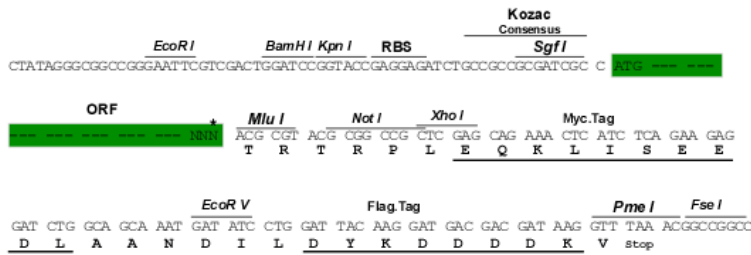
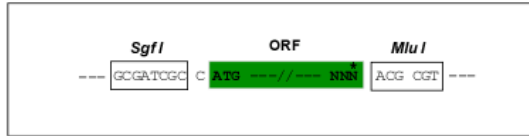
TRTRPLEQKLISEEDLAANDILDYKDDDDKV

**Chromatograms:** [https://cdn.origene.com/chromatograms/ja2248\\_a09.zip](https://cdn.origene.com/chromatograms/ja2248_a09.zip)

**Restriction Sites:** SgfI-MluI

**Cloning Scheme:**

Cloning sites used for ORF Shuttling:

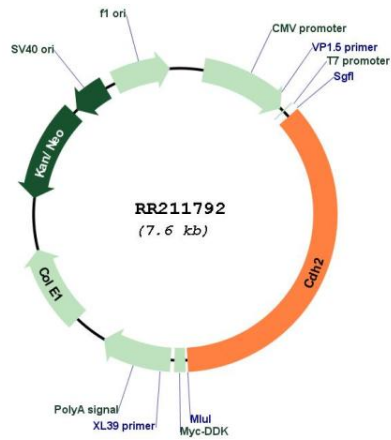


\* The last codon before the Stop codon of the ORF

**ACCN:** NM\_031333

<b>ORF Size:</b>	2718 bp
<b>OTI Disclaimer:</b>	<p>Due to the inherent nature of this plasmid, standard methods to replicate additional amounts of DNA in E. coli are highly likely to result in mutations and/or rearrangements. Therefore, OriGene does not guarantee the capability to replicate this plasmid DNA. Additional amounts of DNA can be purchased from OriGene with batch-specific, full-sequence verification at a reduced cost. Please contact our customer care team at <a href="mailto:custsupport@origene.com">custsupport@origene.com</a> or by calling 301.340.3188 option 3 for pricing and delivery.</p> <p>The molecular sequence of this clone aligns with the gene accession number as a point of reference only. However, individual transcript sequences of the same gene can differ through naturally occurring variations (e.g. polymorphisms), each with its own valid existence. This clone is substantially in agreement with the reference, but a complete review of all prevailing variants is recommended prior to use. <a href="#">More info</a></p>
<b>OTI Annotation:</b>	This clone was engineered to express the complete ORF with an expression tag. Expression varies depending on the nature of the gene.
<b>Components:</b>	The ORF clone is ion-exchange column purified and shipped in a 2D barcoded Matrix tube containing 10ug of transfection-ready, dried plasmid DNA (reconstitute with 100 ul of water).
<b>Reconstitution Method:</b>	<ol style="list-style-type: none"><li>1. Centrifuge at 5,000xg for 5min.</li><li>2. Carefully open the tube and add 100ul of sterile water to dissolve the DNA.</li><li>3. Close the tube and incubate for 10 minutes at room temperature.</li><li>4. Briefly vortex the tube and then do a quick spin (less than 5000xg) to concentrate the liquid at the bottom.</li><li>5. Store the suspended plasmid at -20°C. The DNA is stable for at least one year from date of shipping when stored at -20°C.</li></ol>
<b>RefSeq:</b>	<a href="#">NM_031333.1</a> , <a href="#">NP_112623.1</a>
<b>RefSeq Size:</b>	4350 bp
<b>RefSeq ORF:</b>	2721 bp
<b>Locus ID:</b>	83501
<b>UniProt ID:</b>	<a href="#">Q9Z1Y3</a>
<b>Cytogenetics:</b>	18p13
<b>MW:</b>	100.3 kDa
<b>Gene Summary:</b>	cell-cell adhesion molecule; may play a role in smooth muscle cell migration and adhesion in response to injury [RGD, Feb 2006]

Product images:



Circular map for RR211792