

## Product datasheet for **RR211791**

### Abcc3 (NM\_080581) Rat Tagged ORF Clone

#### Product data:

**Product Type:** Expression Plasmids  
**Product Name:** Abcc3 (NM\_080581) Rat Tagged ORF Clone  
**Tag:** Myc-DDK  
**Symbol:** Abcc3  
**Synonyms:** Mlp2; Mrp3  
**Vector:** pCMV6-Entry (PS100001)  
**E. coli Selection:** Kanamycin (25 ug/mL)  
**Cell Selection:** Neomycin  
**ORF Nucleotide Sequence:** >RR211791 representing NM\_080581  
Red=Cloning site Blue=ORF Green=Tags(s)

TTTTGTAATACGACTCACTATAGGGCGCCGGAATTCGTCGACTGGATCCGGTACCGAGGAGATCTGCC  
GCC**CGATCGCC**

ATGGACCGCTTGTGCGGCTCCGGGAGCTGGGCTCCAAGTCTGGGACTCCAACCTGACTGTATATACCA  
AACTCCAGACCTCACACCCTGTTCCAGAACTCCTTGTGGCCTGGGTTCCCTGCATCTATCTGTGGC  
TGCTTGGCCTGTACCTGTTCTACCTGAGGCACCATCGGCTTGGCTACATAGTCTCTCATGCTTATCC  
AGGCTCAAGACGGCCCTCGGTGTTCTGCTGTGGTGTATCTCATGGGTGGACCTGTTCTACTCCTTCCATG  
GCCTGGTTCACGGCTCATCCCCTGCTCCTGCTCTTTATCACACCCTTGTGGTGGGGATCACCATGCT  
GCTGGCCACATTGCTAATCCAGTATGAGCGGCTTCGGGGCGTGCGGTCTTCAGGTGTGCTCATCATCTTC  
TGGCTCCTGTGTGTGATCTGTGCCATCATCCCCTCCGTTCCAAGATCCTTGGCTTGGCAGAGGGTA  
AAATCTTGGATCCGTTCCGATTCACCACTTTCTACATCTACTTCGCCCTCGTGCTGTGTGCCTTCATCCT  
GTCCTGCTCCAGGAGAAGCCGCTTTGTTTTCCAGAGAATCTTGACACAAATCCTTGCCAGAGGCC  
AGCGTGGCTTCTTCCCGTCTGTCTTCTGGTGGTTCACAAAGCTTGGCATCCTTGGTACCGACGTC  
CCCTGGAGGACAGTGACCTCTGGTCTGTCTGAGGAGGACTGCTCTCACAAAGGTGATACAACGGCTACT  
GGAAGCATGGCAAAAGCAGCAGACCCAAGCATCAGGGCCCGAGACTGCAGCCCTTGAGCCAAAGATCGCA  
GGTGAGGATGAGGTCTGCTGAAGGCCCGCCCAAGACCAAGAAGCCTTCTTTCTGAGGCTTTGGTGA  
GAACCTTCACCTCCAGCTTGGCTCATGGGTGCCTGCTTCAAGCTGATCCAGGACCTGCTCTCCTTCATCAA  
CCCACAGCTGCTCAGCATCCTCATCAGGTTTATTTCTGACCCACGGCCCTACCTGGTGGGGCTTCTTG  
CTGGCCGGACTGATGTTCTGTGAGCTCCACCATGCAGACATTGATCTTACACCAACATTACCCTGCATCT  
TTGTGATGGCCTTGAGGATACGGACTGCTATCATAGGCGTCATCTACAGGAAGGCTCTGACCATCACCAA  
CTCAGTCAAACGTGAGTACACTGTGGGAGAAATGGTCAACCTCATGTCGGTGGACGCCACGGCTTCATG  
GATGCTCCCCATTCATCAACCTGCTGTGGTCTGCACCTTTCAGGTCATCCTGGCGATATACTTCTCTCT  
GGCAGATCTTAGGCCATCAGCCCTGGCTGGGGTGGCTGTGATAGTCTTGTCTGATACCACTCAATGGAGC  
TGTGTCCATGAAAATGAAGACCTACCAGGTACAGCAAATGAAGTTCAAAGACTCCCGCATCAAAGTATG  
AGTGAGATCCTGAATGGCATCAAAGTCTGAAGCTGTACGCTTGGGAGCCACCTTCTTGGAGCAGGTAG



AAGGAATCAGGCAGGGTGAAGCTCCAGCTACTGCGGAAGGGCGCCTACCTGCAGGCTATCTCTACCTTCAT  
CTGGGTCTGCACCCCGTTTATGGTGACCCTGATCACCCCTCGGGGTGTACGTGTGTGGACAAGAACAAT  
GTGCTGGATGCTGAGAAGGCCTTCGTGTCCCTGTCTTGTTCATATCTTAAAGATCCCCCTCAACCTGC  
TGCCTCAGTTAATCAGTGGCATGACCCAGACCAGCGTGTCTCTGAAACGGATCCAGGATTTCTGAACCA  
AGATGAACTTGACCCCCAGTGTGTGGAAGAAAGACCATCTCCCAGGCCGTGCCATCACCATACACAAC  
GGCACCTTCTCCTGGTCCAAGGACCTGCCTCCCACCTTCACAGCCTAAACATTCAAATCCCCAAGGGGG  
CATTGGTGGCTGTGGTGGGACCTGTGGGCTGTGGGAAGTCTTCCCTGGTGTCTGCCTTGTCTGGAGAGAT  
GGAGAAGCTGGAAGGTGCAGTGTCTGTAAGGGCTCTGTGGCCTACGTGCCCCAGCAGGCCGTGGATCCAG  
AACTGCACACTTCAGGAAAATGTGCTATTTGGCCAACCCATGAACCCCAAGCGCTACCAACAGGCTCTGG  
AGACGTGTGCCCTGTAGCTGACCTAGATGTGCTTCTGGTGGGGACCAGACAGAGATTGGAGAGAAGGG  
CATTAACCTATCTGGAGGCCAGCGACAACGGGTGAGTTTGGCCGAGCTGTTTATAGTGACGCCAACATT  
TTTTTGTGGATGACCCACTGTCGGCTGTGGACTCTCACGTGGCTAAGCATATCTTCGACCAAGTGATTG  
GACCAGAAGGTGTGCTGGCAGGCAAGACTCGGGTGTGGTAACCCATGGCATCAGCTTCTGCCCCAGAC  
GGACTTTATCATTGTGCTTGTGACGGACAGATTACTGAGATGGTCACTACTCCGAACTCTGCAGCAC  
GATGGCTCCTTTGCCAACTTCTCCGAACTATGCACCAGATGAAAACCAGGAGGCCAATGAAGGAGTCT  
TGCAACATGCAAATGAGGAGGTGCTCCTGCTTGAAGACACACTCAGCACCCACACAGACCTGACAGACAC  
CGAGCCAGCCATATACGAGGTCCGCAAGCAGTTCATGAGAGAGATGAGCTCCTTGTCTTCTGAAGGAGAG  
GGCCAGAACCAGCCTGTGCTCAAGAGATATACGAGTTCAGTGGAGAAGGAGGTGCCGGCGACACAGACTA  
AAGAGACTGGTGCATTAATCAAAGAGGAGATCGCAGAGACAGGCAATGTGAAGCTGAGCGTGTACTGGGA  
TTATGCCAAGTCTGTGGGGCTCTGCACCACGCTGTTTATCTGCCTCCTGTATGCTGGCAAAATGCGGTT  
GCTATCGGAGCCAATGTGTGGCTCAGTGCCTGGACCAATGATGTGGAGGAACATGGCCAGCAGAACAACA  
CCTCCGTAAGGCTGGGAGTCTACGCCACCCTAGGAATACTGCAAGGGCTCCTGGTATGCTGTGCGCCT  
CACCATTGGTGGTGGCGCTATCCAGGCTGCCCGCTGCTGCACACAGCTGTGGCACAACAGATCCCGT  
GCGCCTCAGTCTTCTTTGACACGACGCCCTCAGGCCGCATCCTCAATCGTTTCTCCAAGGACATATACG  
TCATCGATGAGGTTCTGGCCCCACCATCCTCATGCTGTTCAATTCATTCTACACATCCATCTCCACCAT  
TGTGGTCACTGTGCCAGCACGCCACTTCTGCGTGGTGTCTTCTCCTGCTGTGTTCTATGGCTTC  
GTGCAGCGCTTCTATGTGGCCACATCGAGGCAGCTGAAGAGACTGGAATCCGTTAGCCGCTCGCCCATCT  
TCTCCACTTCTCGGAGACAGTAACTGGCACCAGTGTCTTGGGGCTACGGCCGAGTCCAAGACTTCAA  
GGTCTCAGTGTGCTAAGGTGGATAGCAACCAGAAGACCACTTATCCTTACATCGCTCCAACCGGTGG  
CTGGGTGTCCACGTGGAGTTTGTGGGAACTGCGTGGTGTCTTCTCCGCGCTGTTGACGTGATCGGGA  
GAAACAGCTTGAATCCAGGGCTTGTGGTCTTCCGTGTCTATGCCTTACAGGTGACCTTGAGTTTGAA  
TTGGATGATACGGACGCTATCCGACCTGGAGTCTAATATCATAGCCGTGGAGAGAGTCAAGGAGTACTCT  
AAGACGGAGACTGAGGCTCCCTGGGTGTTGGAGAGCAACCCTGCTCCAGAAGGCTGGCCCAGGAGTGGGG  
TGGTAGAGTTCGGAACTATTCCGTTGCGGTACCGCCCGGGCTCGAGTTGGTGTGAAGAATTTGACTCT  
GCATGTGCAGGGTGGGGAGAAGGTAGGCATCGTGGGCCGACTGGGGCTGGCAAATCTTCCATGACTCTT  
TGCCTATTCGAACTCCTGGAGGCCGAGAGGGTGAAGTCTTATTGACGGGCTCAATGTGGCACACATTG  
GCCTCCATGACCTGCGTTCACAACTCACCATCATCCCTCAGGACCCATCCTGTTCTCGGGCAGCGTGGC  
CATGAACCTCGATCCCTTTGGCCGTTACTCGGACGAGGACATCTGGAGGACCTGGAGCTATCCCACCTG  
AGTGCAATTTGTGAGCAGCCAGCCGACAGGCCCTGGATTTTCAAGTGTCTGAGGGTGGGATAATCTCAGTG  
TTGGCCAGAGGCAGCTCGTGTGCTTAGCCGAGCCCTGCTCCGAAAGAGCCGTGTCTGGTTTTAGACGA  
GGCCACCCTGCCATTGACCTGGAGACTGATGACCTCATCCAGGTACCATCCGTACCCAGTTTGAAGAC  
TGCACTGTACTGACCATCGCCACCGGCTCAACACAATCATGGACTACAACCGGGTCTGGTCTTGGACA  
AAGGAGTAGTAGCTGAATTTGATTCTCCAGTAAACCTCATTGCAGCTGGAGGCATCTTCTATGGGATGGC  
CAAAGATGCAGGACTCGCC

ACGCGTACGCGGCCGCTCGAGCAGAACTCATCTCAGAAGAGGATCTGGCAGCAAATGATATCCTGGATT  
ACAAGGATGACGACGATAAGGTTTAA

**Protein Sequence:** >RR211791 representing NM\_080581  
 Red=Cloning site Green=Tags(s)

```
MDRLCGSGELGSKFWDSNLTVYNTNPDLPFCFQNSLLAWVPCYILWAALPCYLFYLRHHRLLGYIVLSCLS
RLKLTALGVLLWCISWVDFYFSFHGLVHGSSPAPVFFITPLLVGITMLLATLLIQYERLGRVSSGVLIIFF
WLLCVICAIIPFRSKILLALAEKILDPFRFTTFYIYFALVLCALILSCFQEKPLFSPENLDTNPCPEA
SAGFFSRLSFWWFTKLAAILGYRRPLESDLSLSEEDCSHKVVQRLLLEAWQKQQTQASGPQTAALPEKIA
GEDEVLLKARPKTKPSFLRALVRTFTSSLLMGACFKLIQDLSFINPQLLSILIRFISDPTAPTWWGFL
LAGLMFVSSTMQTLILHQHYHCIFVMALRIRTAIIGVIYRKALITNSVKREYTVGEMVNLMSVDAQRFM
DVSPFINLLWSAPLQVILAIYFLWQILGPSALAGVAVIVLLIPLNGAVSMKMKTYVQVQMKFKDSRIKLM
SEILNGIKVLKLYAWPTFLEQVEGIRQGEQLLRKGYLQAISTFIWVCTPFMVTLITLGVYVCDKNN
VLDAEKAFVSLSLFNILKIPLNLLPQLISGMTQTSVSLKRIQDFLNQDELDPQCVERKTIISPGRAITIHN
GTFWSKDLPTLHSLNIQIPKALVAVVGPVCGKSSLVALLGEMEKLEGAVSVKGSVAVVPPQAWIQ
NCTLQENVLFGQPMNPKRYQQALETCALLADLDVLPGGDQTEIGEKGINLGGQRQVSLARAVYSANI
FLLDDPLSAVDSHVAKHIFDQVIGPEGLAGKTRVLVTHGISFLPQTDFFIIVLADGQITEMGHYSELLQH
DGSFANFLRNYAPDENQEANEGVLQHANEVLLLEDTLSTHTDLTDTEPAIYEVKQFMREMSLSSEGE
GQNRPVLKRYTSSLEKEVPATQTKETGALIKEEIAETGNVLSVYWDYAKSVGLCTTLFICLLYAGQNAV
AIGANVWLSAWTNDVEEHGQQNNTSVRLGVYATLGLILQGLLVMLSAFTMVVGAIQAAARLLHTALLHNQIR
APQSFFDTPSGRILNRFKDIYVIDEVLAPTILMLFNSFYTSISTIVVIVASTPLFCVVVPLAVFYGF
VQRFYVATSRQLKRLSVSRSPIFSHFSETVTGTSVIRAYGRVQDFKVLSDAKVDSNQTTPYPIASNRW
LGVHVEFVGNVFLSALFAVIGRNSLNPLVGLSVSYALQVTLNLNWMIRTLSDLESNIAVERVKEYS
KTETEAPWVLESNRAPEGWPRSGVVEFRNYSVRYRPGLELVKNTLHVQGGKGVIGVGTGAGKSSMTL
SAFRILEAAEGEIFIDGLNVAHIGLHDLRSQLTIIIPQDPILFSGTLRMNLDPPFRYSDEDIWRTLELSHL
SAFVSSQPTGLDFQCSEGGDNLVSGRQLVCLARALLRKRSLVLDDEATAIDLETDLLIQGTIRTQFED
CTVLTIAHRLNTIMDYNRVLVLDKGVVAEFDSPVNLIAAGGIFYGMAKDAGLA
```

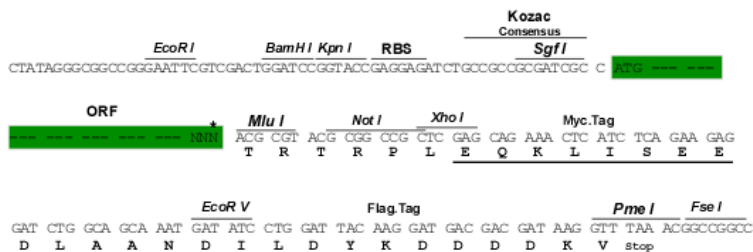
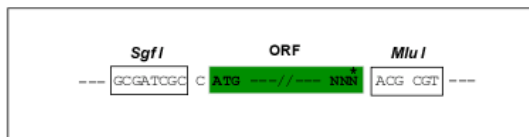
TRTRPLEQKLISEEDLAANDILDYKDDDDKV

**Restriction Sites:**

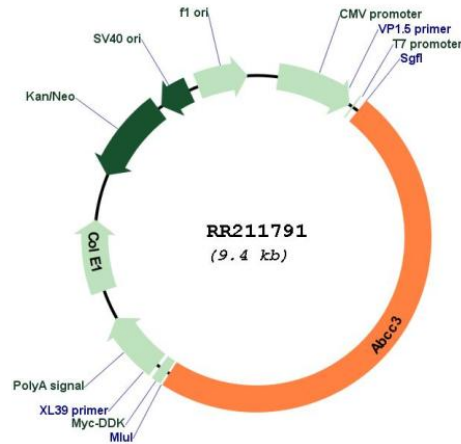
SgfI-MluI

**Cloning Scheme:**

Cloning sites used for ORF Shuttling:



\* The last codon before the Stop codon of the ORF

**Plasmid Map:**


**ACCN:** NM\_080581

**ORF Size:** 4569 bp

**OTI Disclaimer:** The molecular sequence of this clone aligns with the gene accession number as a point of reference only. However, individual transcript sequences of the same gene can differ through naturally occurring variations (e.g. polymorphisms), each with its own valid existence. This clone is substantially in agreement with the reference, but a complete review of all prevailing variants is recommended prior to use. [More info](#)

**OTI Annotation:** This clone was engineered to express the complete ORF with an expression tag. Expression varies depending on the nature of the gene.

**Components:** The ORF clone is ion-exchange column purified and shipped in a 2D barcoded Matrix tube containing 10ug of transfection-ready, dried plasmid DNA (reconstitute with 100 ul of water).

**Reconstitution Method:**

1. Centrifuge at 5,000xg for 5min.
2. Carefully open the tube and add 100ul of sterile water to dissolve the DNA.
3. Close the tube and incubate for 10 minutes at room temperature.
4. Briefly vortex the tube and then do a quick spin (less than 5000xg) to concentrate the liquid at the bottom.
5. Store the suspended plasmid at -20°C. The DNA is stable for at least one year from date of shipping when stored at -20°C.

**RefSeq:** [NM\\_080581.1](#), [NP\\_542148.1](#)

**RefSeq Size:** 5174 bp

**RefSeq ORF:** 4572 bp

**Locus ID:** 140668

**UniProt ID:** [O88563](#)

**Cytogenetics:** 10q26

**MW:** 169.3 kDa

**Gene Summary:** human homolog transports conjugated metabolites from hepatocytes into the bloodstream; may play a role in steroid metabolism [RGD, Feb 2006]