

Product datasheet for **RR211789**

Nos1ap (NM_138922) Rat Tagged ORF Clone

Product data:

Product Type:	Expression Plasmids
Product Name:	Nos1ap (NM_138922) Rat Tagged ORF Clone
Tag:	Myc-DDK
Symbol:	Nos1ap
Synonyms:	Capon
Vector:	pCMV6-Entry (PS100001)
E. coli Selection:	Kanamycin (25 ug/mL)
Cell Selection:	Neomycin



[View online »](#)

ORF Nucleotide Sequence:

>RR211789 representing NM_138922
 Red=Cloning site Blue=ORF Green=Tags(s)

TTTTGTAATACGACTCACTATAGGGCGGCCGGAATTCGTCGACTGGATCCGGTACCGAGGAGATCTGCC
 GCC**CGGATCGCC**

ATGCCAGCAAACCAAGTACAACCTTGTGGACGATGGGCACGACTTACGGATCCCTTTGCACAACGAGG
 ACGCCTTCCAGCACGGCATCTCTTTGAGGCCAAGTACGTGGGAAGCCTGGATGTGCCAGACCCAACAG
 CAGGGTTGAGATCGTGGCTGCCATGCGCAGAATCCGGTATGAGTTTAAAGCCAAGAAATATCAAGAAGAAG
 AAAGTAAGCATCATGGTCTCCGTGGACGGTGTCAAAGTATTCTGAAGAAGAAGAAAAAGAAAGGAGT
 GGACGTGGGATGAGAGCAAGATGCTGGTATGCAGGACCTATCTACAGGATCTTCTATGTCTCTCATGA
 CTCCCAAGACTTGAAAATCTTCAGCTATATCGCTCGAGATGGTCCAGCAATATCTTCAGATGCAATGTC
 TTTAAATCCAAGAAGAAGAGCCAAGCTATGAGAATCGTACGGACAGTGGGACAGGCCCTTTGAGGTCTGCC
 ACAAGCTGAGCCTGCAGCACACACAGCAGAATGCAGATGGCCAGGAAGATGGAGAGAGCGAGAGGAACAG
 CGATGGCTCAGGAGACCCAGGCCCCAGCTCACTGGAGCTGAGAGGGTCTCCACAGCCACCGCAGAGGAG
 ACCGACATTGACGCTGTGGAGGTCCCACTCCCCGGGAATGACATTCTAGAATTCAGCCGAGGTGTGACTG
 ACCTGGATGCTATTGGGAAGGACGGAGGCTCCACATAGACACGACGGTCTCACCCCATCCACAGGAGCC
 CATGCTGGCAGCCTCCCCTCGCATGCTGCTCCCTTCTTCTTCTTCTCGAAGCCACCGGGCTTGGGCACT
 GGGACGCCCTGTCCACTCACCACCAGATGCAGCTCCTCCAGCAGCTCCTCCAGCAGCAGCAGCAGCAGA
 CACAAGTGGCTGTGGCTCAGGTTCACTTGTGAAGGATCAGTTGGCTGCTGAGGCTGCGGCACGGCTGGA
 GGCCAGGCACGAGTGCACCAGCTCCTGCTACAGAACAAGACATGCTTCAGCACATCTCTGTGTTG
 AAGCAGTGCAGGAGCTGGAAGTGAAGCTGTGAGACAGAGCACCATGGGCTCCAGGACAGCTTGTGG
 AGTACACTTCCGTTCCAGTGCCTGCTGTGCTGTGAATCCACCCTCCTAAGCCAGAGGACTACA
 CTCACCACTGCTGGGCGCTGGCTTGGCTGACTTTGCCACCCAGTGGGCAGGCCCTTAGGTAGGCGTGAC
 TGCTTGGTGAAGCTGGAGTGCTTTCGTTTCTCCAGCCGAGGATAACCAGCCGATGGCAGAGGTTGAGC
 CGCTCCTAGTGGCTGGAGCTCATCAAGTTCGAGAGTCAGGCATCGCCTCAGAGTATGAGTCCAACAC
 AGACGAAAGCGAGGAGCGTGACTCGTGGTGCAGGAAGAGCTGCCACGCCTGCTCAATGCTCTACAGCG
 CAGGAGTTGGGTGACAGTTGGATGATGAGATCGCCGTG

ACGCGTACGCGGCCGCTCGAGCAGAAACTCATCTCAGAAGAGGATCTGGCAGCAAATGATATCTGGATT
 ACAAGGATGACGACGATAAGGTTTAA

Protein Sequence:

>RR211789 representing NM_138922
 Red=Cloning site Green=Tags(s)

MPSKTKYNLVDDGHDLRIPLHNEDAFQHGISFEAKYVGS LDVPRPNSRVEIVAAMRRIRYEFKAKNIKKK
 KVSIMVSVDGKVI LKKKKKKKEWTWDESKMLVMQDPIYRIFYVSHDSQDLKIFS YIARDGASNIFRCNV
 FKSKKKSQAMRIVRTVGQAFEVCHKLSLQHTQQNADGQEDGESERNSDGSGDPGRQLTGAERVSTATAEE
 TDIDAVEVPLPGNDILEFSRGTDLDAIGKDGSHIDTTVSPHPQEPMLAASPRMLLPSSSSSKPPGLGT
 GTPLSTHHQMQLLQQLLQQQQQTQVAVAVQHLLKQDLAAEAAARLEAQARVHQLLLQNKDMLQHISLLV
 KQVQELELKLSGQSTMGSQDSLLEITFRSGALPVLCESTTPKPEDLHSPLLGAGLADF AHPVGSPLGRRD
 CLVKLECFRFLPAEDNQPM AQGEPLLGLELIKFRESGIASEYESNTDESEERDSWSQEELPRLLNVLQR
 QELGDSL DDEIAV

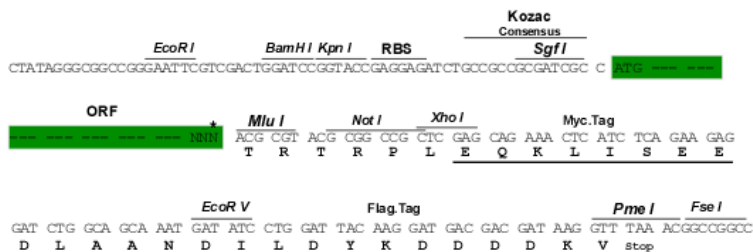
TRTRPLEQKLISEEDLAANDILDYKDDDDKV

Restriction Sites:

SgfI-MluI

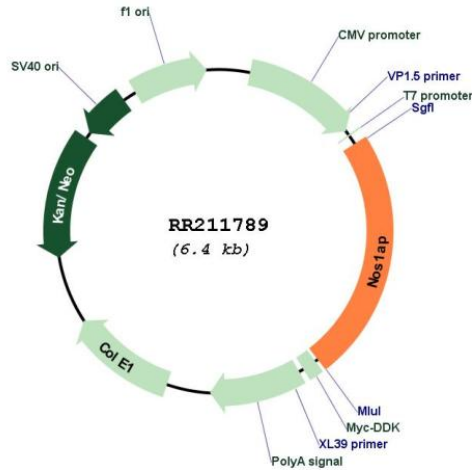
Cloning Scheme:

Cloning sites used for ORF Shutting:



* The last codon before the Stop codon of the ORF

Plasmid Map:



ACCN: NM_138922

ORF Size: 1509 bp

OTI Disclaimer: The molecular sequence of this clone aligns with the gene accession number as a point of reference only. However, individual transcript sequences of the same gene can differ through naturally occurring variations (e.g. polymorphisms), each with its own valid existence. This clone is substantially in agreement with the reference, but a complete review of all prevailing variants is recommended prior to use. [More info](#)

OTI Annotation: This clone was engineered to express the complete ORF with an expression tag. Expression varies depending on the nature of the gene.

Components: The ORF clone is ion-exchange column purified and shipped in a 2D barcoded Matrix tube containing 10ug of transfection-ready, dried plasmid DNA (reconstitute with 100 ul of water).

Reconstitution Method:

1. Centrifuge at 5,000xg for 5min.
2. Carefully open the tube and add 100ul of sterile water to dissolve the DNA.
3. Close the tube and incubate for 10 minutes at room temperature.
4. Briefly vortex the tube and then do a quick spin (less than 5000xg) to concentrate the liquid at the bottom.
5. Store the suspended plasmid at -20°C. The DNA is stable for at least one year from date of shipping when stored at -20°C.

RefSeq: [NM_138922.1](#), [NP_620277.1](#)

RefSeq Size: 2919 bp

RefSeq ORF: 1512 bp

Locus ID: 192363

UniProt ID: [O54960](#)

Cytogenetics: 13q24

MW: 55.9 kDa

Gene Summary: involved in regulating the interaction between neuronal nitric oxide synthase and PSD95 [RGD, Feb 2006]