

## Product datasheet for **RR211747**

### Gnb1 (NM\_030987) Rat Tagged ORF Clone

#### Product data:

Product Type:	Expression Plasmids
Product Name:	Gnb1 (NM_030987) Rat Tagged ORF Clone
Tag:	Myc-DDK
Symbol:	Gnb1
Mammalian Cell Selection:	Neomycin
Vector:	pCMV6-Entry (PS100001)
E. coli Selection:	Kanamycin (25 ug/mL)
ORF Nucleotide Sequence:	>RR211747 ORF sequence Red=Cloning site Blue=ORF Green=Tags(s)

TTTTGTAATACGACTCACTATAGGGCGGCCGGAATTCGTCGACTGGATCCGGTACCGAGGAGATCTGCC  
GCC**CGATCGCC**

ATGAGTGAACCTTGACCAGCTGCGGCAGGAGGCCGAGCAACTGAAGAACCAAAATTAGAGATGCCCGTAAAG  
CATGTGCAGATGCGACTCTTTCTCAGATCACAACAACATTGATCCAGTGGGAAGAATCCAAATGCGAAC  
CAGGAGAACACTGAGGGGCATCTGGCAAAGATTTATGCCATGCACTGGGCACAGACTCAAGGCTCCTT  
GTCAGCGCCTCTCAGGATGGGAACTCATCATCTGGGACAGCTATACCACAAACAAGTTTCATGCCATCC  
CTCTGCGCTCCTTTGGGTCATGACCTGTGCATACGCTCCTTCTGGGAATTATGTGGCCTGTGGTGGCCT  
GGATAACATCTGCTCCATTTACAATCTGAAAACCTCGTGAAGGAAATGTGCGTGTGAGTCGTGAGCTGGCA  
GGACATACAGGTTATCTATCCTGTTGCCGTTCTCGGATGACAATCAGATAGTTACCAGTTCTGGAGACA  
CCACATGTGCCCTGTGGGACATCGAGACCGGCCAGCAGACAACCACGTTTACTGGACACACTGGAGATGT  
CATGAGCCTGTCTCTTGCTCCTGACACCAGACTGTTTGTCTCTGGTGCTTGGCATGCTTCGGCCAAGCTC  
TGGGATGTCCGAGAAGGGATGTGCCGCGCAGACCTTTACAGGACACGAGTCTGACATCAATGCCATATGTT  
TCTTTCCCAATGGCAATGCCTTTGCCACTGGCTCAGACGATGCTACATGCAGGCTGTTTGACCTTCGTGC  
AGACCAGGAGCTCATGACCTACTCCCATGACAACATTATCTGTGGTATCACATCTGTTTCCTTCTCCAAG  
AGTGGCCGCTCCTCCTCGCTGGCTATGACGACTTCAACTGTAATGTCTGGGATGCACTCAAAGCTGACA  
GAGCAGGTGTCCTAGCTGGACATGACAACCGAGTCAGCTCCTGGGGTGACTGATGATGGCATGGCTGT  
GGCAACAGGATCCTGGACAGCTTCTCAAGATCTGGAAC

**ACGCGT**ACGCGGCCGCTCGAGCAGAACTCATCTCAGAAGAGGATCTGGCAGCAAATGATATCCTGGATT  
ACAAGGATGACGACGATAAGGTTTAA



[View online »](#)

**Protein Sequence:** >RR211747 protein sequence  
 Red=Cloning site Green=Tags(s)

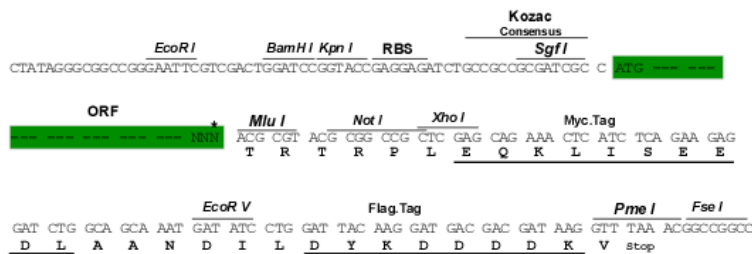
MSELDQLRQAEQLKNQIRDARKACADATLSQITNNIDPVGRIQMRTRRTLRGHLAKIYAMHWGTDSSRL  
 VSASQDGKLIWDSYTTNKVHAIPLRSSWVMTCAYPNSGNYVACGGLDNICSIYNLKTREGNVRVSRELA  
 GHTGYLSCCRFLDDNQIVTSSGDTTCALWDIETGQQTTFGTGTDVMSLSLAPDTRLFVSGACDASAKL  
 WDVREGMCRQTFTHGESDINAICFFPNGNAFATGSDDATCRLFDLRADQELMTYSHDNIICGITSVSFSK  
 SGRLLLAGYDDFNCNVWDALKADRAGVLAGHDNRVSLGVTDDGMAVATGSWDSFLKIWN

TRTRPLEQKLISEEDLAANDILDYKDDDDKV

**Restriction Sites:** SgfI-MluI

**Cloning Scheme:**

Cloning sites used for ORF Shuttling:



\* The last codon before the Stop codon of the ORF

**ACCN:** NM\_030987

**ORF Size:** 1020 bp

**OTI Disclaimer:** The molecular sequence of this clone aligns with the gene accession number as a point of reference only. However, individual transcript sequences of the same gene can differ through naturally occurring variations (e.g. polymorphisms), each with its own valid existence. This clone is substantially in agreement with the reference, but a complete review of all prevailing variants is recommended prior to use. [More info](#)

**OTI Annotation:** This clone was engineered to express the complete ORF with an expression tag. Expression varies depending on the nature of the gene.

**Components:** The ORF clone is ion-exchange column purified and shipped in a 2D barcoded Matrix tube containing 10ug of transfection-ready, dried plasmid DNA (reconstitute with 100 ul of water).

**Reconstitution Method:**

1. Centrifuge at 5,000xg for 5min.
2. Carefully open the tube and add 100ul of sterile water to dissolve the DNA.
3. Close the tube and incubate for 10 minutes at room temperature.
4. Briefly vortex the tube and then do a quick spin (less than 5000xg) to concentrate the liquid at the bottom.
5. Store the suspended plasmid at -20°C. The DNA is stable for at least one year from date of shipping when stored at -20°C.

**RefSeq:** [NM\\_030987.2](#), [NP\\_112249.2](#)

**RefSeq Size:** 1544 bp

**RefSeq ORF:** 1023 bp

**Locus ID:** 24400

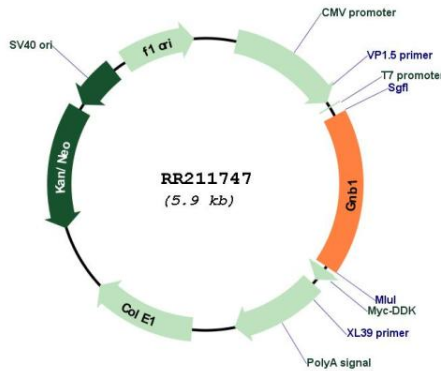
**UniProt ID:** [P54311](#)

**Cytogenetics:** 5q36

**MW:** 37.4 kDa

**Gene Summary:** component of heterotrimeric G-proteins; mediates activity of effector molecules and contributes to the specificity of G-protein-receptor interaction; mat confer preferential receptor specificity to the voltage-sensitive calcium channel [RGD, Jun 2006]

**Product images:**



Circular map for RR211747