

## Product datasheet for **RR211608**

### Fbxo25 (NM\_001014239) Rat Tagged ORF Clone

#### Product data:

Product Type:	Expression Plasmids
Product Name:	Fbxo25 (NM_001014239) Rat Tagged ORF Clone
Tag:	Myc-DDK
Symbol:	Fbxo25
Mammalian Cell Selection:	Neomycin
Vector:	pCMV6-Entry (PS100001)
E. coli Selection:	Kanamycin (25 ug/mL)
ORF Nucleotide Sequence:	>RR211608 representing NM_001014239 Red=Cloning site Blue=ORF Green=Tags(s)

TTTTGTAATACGACTCACTATAGGGCGGCCGGAATTCGTCGACTGGATCCGGTACCGAGGAGATCTGCC  
GCC**CGATCGCC**

ATGCCGTTTCTGGGTCAGGACTGGAGATCCCCTGGATGGAGCTGGATCAAACAGAAGATGGGTGGAAAA  
GGTGTGACCCCTGTAGCCACGAGATCAGAAGTGAGGATAACCAGTACCCCGTCAACCACAGCATTATCTT  
AAATAGTGGTGAAGAAGAAATTTCAATAATGACTGTGAATATGCAGCCAAAAAGAGGAAGAAGCAACAT  
TTTGGAAACGACACAGCTGCTCACAGTTTTTATCGTGAAAAATGGATCTATGTCCATAAAGAAAGCACAA  
AGGAAAGGCATGGCTACTGTACCCTGGGAGAAGCCTTCAACCCTAGACTTCTCCAGTGGCATCCAGGA  
TATCAGACGGTTCACTTATGTGGTCAAACACTACTGCAGCTCATCGCGAAGTCTCAGTTAACCTCTCTGAGT  
GGAGTGGCACAGAAGAACTACTTCAACATTTTGGATAAAAATCGTGCAAAAAGGTTCTTGATGACCACCAGA  
ATCCTCGCTGATCAAAGACCTGCTCAAGACTTGAGCTCGACCCTTTGCATCCTTGTGAGGGGGTGGG  
GAAATCAGTGTTAGTTGGGAACATCAATATTTGGATTTGCCGCTTAGAGACGGTTCTCAACTGGCAGGAG  
AAGCTGCAGAATCTCCAGATGACTAAGCAGGTAACACTGGCCTCACACTCAGTGACCTGCCCTTGACA  
TGCTGAACAACATCCTGTACCGATTCTCAGACGGCTGGGACATTGTCACCCTGGGCCAGGTAACACCAAC  
CCTGTACATGCTCAGCGAAGACCGCGGCTGTGGAAGAGGCTGTGTGAGTACCACCTTTGCTGAGAAGCAG  
TTTTGTAGACATTTGATCCTTTTCAGAAAAGGCCATATCGAGTGAAGCTGATGATTTTACGCTTACA  
AGTATTACCCGACAAAGAGCAGTACGGAGACACTTTGCACTTCTGCCGACATTGCAGCATTCTCTCTG  
GAAGGACTCGGGACACCCCTGCACGGCGCTGACCCAGACAGCTGCTTACACCTGTGTCCCGGAGCAC  
TTCATTGACCTCTTCAAATTC

**ACGCGT**ACGCGGCCGCTCGAGCAGAAACTCATCTCAGAAGAGGATCTGGCAGCAAATGATATCCTGGATT  
ACAAGGATGACGACGATAAGGTTTAA



[View online »](#)

**Protein Sequence:** >RR211608 representing NM\_001014239  
Red=Cloning site Green=Tags(s)

MPFLGQDWRSPGWSWIKTEDGWKRCDCPSHEIRSEDNQYPVNHSIILNSGEEEIFNNDCEYAAKRRKKQH  
 FGNDTAAHSFYREKWIYVHKESTKERHGYCTLGEAFNRDLDFSSAIQDIRRFTYVVKLLQLIAKSQLTSL  
 GVAQKNYFNILDKIVQKVLDDHQNPRLIKDLLQDLSSSTLCILVRGVGKSVLVGNINIWICRLETVLNWQE  
 KLQNLQMTKQVNTGLTLDLPLHMLNNILYRFSDGWDIVTLGQVPTLYMLSEDRRLWKRLCQYHFAEKQ  
 FCRHLILSEKGHIEWKLMYFTLQKYYPTKEQYGDTLHF CRHCSILFWKDSGHPCTAADPDSCTPVSPEH  
 FIDLKFK

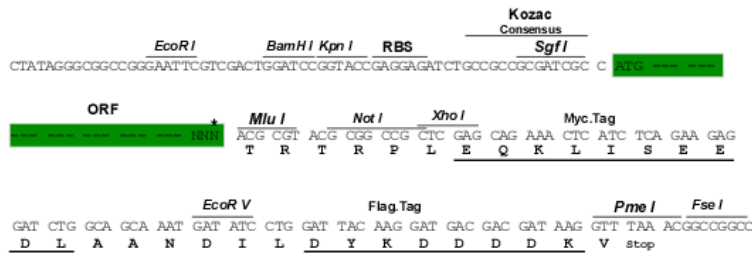
TRTRPLEQKLISEEDLAANDILDYKDDDDKV

**Chromatograms:** [https://cdn.origene.com/chromatograms/ja3368\\_e12.zip](https://cdn.origene.com/chromatograms/ja3368_e12.zip)

**Restriction Sites:** Sgfl-MluI

**Cloning Scheme:**

Cloning sites used for ORF Shuttling:



\* The last codon before the Stop codon of the ORF

**ACCN:** NM\_001014239

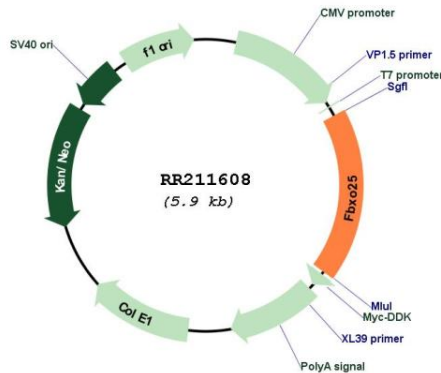
**ORF Size:** 1071 bp

**OTI Disclaimer:** Due to the inherent nature of this plasmid, standard methods to replicate additional amounts of DNA in E. coli are highly likely to result in mutations and/or rearrangements. Therefore, OriGene does not guarantee the capability to replicate this plasmid DNA. Additional amounts of DNA can be purchased from OriGene with batch-specific, full-sequence verification at a reduced cost. Please contact our customer care team at [custsupport@origene.com](mailto:custsupport@origene.com) or by calling 301.340.3188 option 3 for pricing and delivery.

The molecular sequence of this clone aligns with the gene accession number as a point of reference only. However, individual transcript sequences of the same gene can differ through naturally occurring variations (e.g. polymorphisms), each with its own valid existence. This clone is substantially in agreement with the reference, but a complete review of all prevailing variants is recommended prior to use. [More info](#)

<b>OTI Annotation:</b>	This clone was engineered to express the complete ORF with an expression tag. Expression varies depending on the nature of the gene.
<b>Components:</b>	The ORF clone is ion-exchange column purified and shipped in a 2D barcoded Matrix tube containing 10ug of transfection-ready, dried plasmid DNA (reconstitute with 100 ul of water).
<b>Reconstitution Method:</b>	<ol style="list-style-type: none"> <li>1. Centrifuge at 5,000xg for 5min.</li> <li>2. Carefully open the tube and add 100ul of sterile water to dissolve the DNA.</li> <li>3. Close the tube and incubate for 10 minutes at room temperature.</li> <li>4. Briefly vortex the tube and then do a quick spin (less than 5000xg) to concentrate the liquid at the bottom.</li> <li>5. Store the suspended plasmid at -20°C. The DNA is stable for at least one year from date of shipping when stored at -20°C.</li> </ol>
<b>RefSeq:</b>	<u>NM_001014239.1, NP_001014261.1</u>
<b>RefSeq Size:</b>	1947 bp
<b>RefSeq ORF:</b>	1074 bp
<b>Locus ID:</b>	364637
<b>UniProt ID:</b>	<u>Q641X7</u>
<b>Cytogenetics:</b>	16q12.5
<b>MW:</b>	42 kDa
<b>Gene Summary:</b>	Substrate-recognition component of the SCF (SKP1-CUL1-F-box protein)-type E3 ubiquitin ligase complex. May play a role in accumulation of expanded polyglutamine (polyQ) protein huntingtin (HTT) (By similarity).[UniProtKB/Swiss-Prot Function]

**Product images:**



Circular map for RR211608