

Product datasheet for **RR211554**

Glra3 (NM_053724) Rat Tagged ORF Clone

Product data:

Product Type:	Expression Plasmids
Product Name:	Glra3 (NM_053724) Rat Tagged ORF Clone
Tag:	Myc-DDK
Symbol:	Glra3
Vector:	pCMV6-Entry (PS100001)
E. coli Selection:	Kanamycin (25 ug/mL)
Cell Selection:	Neomycin



[View online »](#)

ORF Nucleotide Sequence:

>RR211554 representing NM_053724
 Red=Cloning site Blue=ORF Green=Tags(s)

TTTTGTAATACGACTCACTATAGGGCGGCCGGAATTCGTCGACTGGATCCGGTACCGAGGAGATCTGCC
 GCCGCGATCGCC

ATGCCTTGGATAAGACTGTTTTTCAGGATCGGGAATATCTTCCGTATCATGGCCACGTGAGACACTTTCC
 GGACACTACTTTCTGGATTTTACTTCTGGGAAGCCGCACTGTTACTGAGTTTGGTGGCCACGAAGGAAAC
 AACAGTGCACGGTCCCCAAGTGCCTCAATGTCACCTTCTGATTTTCTGGACAACTAATGGGGAGGACA
 TCCGGGTATGATGCAAGAATCAGGCCAACTTCAAAGGTCCTCCAGTTAATGTCACATGCAACATATTCA
 TAAACAGCTTTGGCTCCATCGCAGAGACGACTATGGATTACAGAGTAAACATTTTCTTCGTGAGAAGTG
 GAATGATCCTCGCCTGCATACAGTGAATACCCTGATGATTATTAGACCTCGACCCATCCATGTTGGAC
 TCCATATGGAAACCTGACTTGTCTTTGCTAATGAGAAGGGGGCTAACTCCACGAAGTACCACCGGATA
 ACAAGCTGCTAAGAATTTTCAAAAATGGAAATGTTCTTTATTCAATAAGGCTGACATTAACACTCTCTTG
 TCCAATGGATCTCAAGAATTTCCAATGGATGTTCAAACATGCATAATGCAACTCGAAAGCTTTGGGTAC
 ACGATGAATGATCTATTTTTCGAATGGCAAGATGAAGCACCAGTACAAGTGGCTGAAGGACTCACTTTGC
 CTCAATTTCTGTTGAAAGAAGAAAAAGATTTGCGATACTGCACTAAACACTACAATACAGGAAAGTTTAC
 ATGCATAGAAGTACGATTTTTCATCTTGAGCGGCAATGGGCTACTACTTGTATCCAGATGTACATTTCCAGC
 CTTCTGATTGTCATTCTGTCTGGGTCTCATTCTGGATTAACATGGATGCAGCTCCGGCTCGGGTAGCGT
 TGGGTATCACCCTGTACTTACGATGACCACGCAGAGTTCTGGATCCCGGGCTTCTTTACCAAAGGTGTC
 CTATGTCAAGGCAATTGACATTTGGATGGCAGTGTGTCTCTTTTTGTGTTCTCAGCACTTCTGGAGTAT
 GCAGCCGTGAATTTTGTATCAAGGCAACACAAAGAAGTCTGAGGTTTCGGCGAAAGAGGAAAAAATAAA
 CAGAAGCTTTTGCACCTGGAGAAGTTTTACCGTTTCTCAGACCGGATGATGAGGTGAGGGAGAGTCCGTT
 CAGCTTCACTGCCTATGGAATGGGGCCCTGTCTTCAAGCAAAGGATGGTGTGGTTCCAAAAGGTCCCAAC
 CATGCTGTCCAGGTATGCCAAAGAGCGCCGATGAAATGAGGAAGTCTTATCGACAGGGCTAAGAAGA
 TCGACACCATCTCCGAGCCTGCTTTCCGCTAGCATTTCTGATTTTAAACATTTTCTACTGGGTTATCTA
 TAAATCCTTAGGCATGAAGACATTCATCATCAGCAAGAT

ACGCGTACGCGGCCGCTCGAGCAGAACTCATCTCAGAAGAGGATCTGGCAGCAATGATATCCTGGATT
 ACAAGGATGACGACGATAAGGTTTAA

Protein Sequence:

>RR211554 representing NM_053724
 Red=Cloning site Green=Tags(s)

MPWIRLFSGSGISFRIMAHVRHFRTLLSGFYFWEAALLLSLVATKETNSARSRAPMSPSDFLDKLMGRT
 SGYDARIRPNFKGPPVNVTCNIFINSFGSIAETTMDYRVNIFLRQKWNDRLAYSEYPDDSLDLDPMSLD
 SIWKPDFFANEKGANFHEVTTDNKLLRIFKNGNVLYSIRLTLTLSCPMDLKNFPMQVQTCIMQLESFGY
 TMNDLIFEWQDEAPVQVAEGLTLPQFLKKEKDLRYCTKHYNTGKFTCIEVRFHLERQMGGYLIQMYIPS
 LLIVILSWVSFWINMDAAPARVALGITTVLMTTQSSGSRASLPKVSIVKAIDIWMAVCLLFVFSALLEY
 AAVNFVSRQHKELLRFRKRKNKTEAFALEKFYRFSDDDEVRESRFSFTAYGMGPCLQAKDGVVPGPN
 HAVQVMPKSADEMRKVFIDRAKKIDTISRACFLAFLIFNIFYWVIYKILRHEDIHHQQD

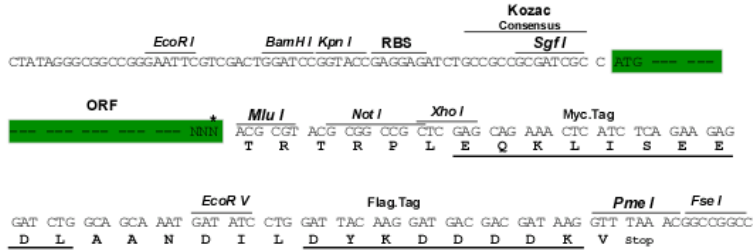
TRTRPLEQKLISEEDLAANDILDYKDDDDKV

Restriction Sites:

Sgfl-MluI

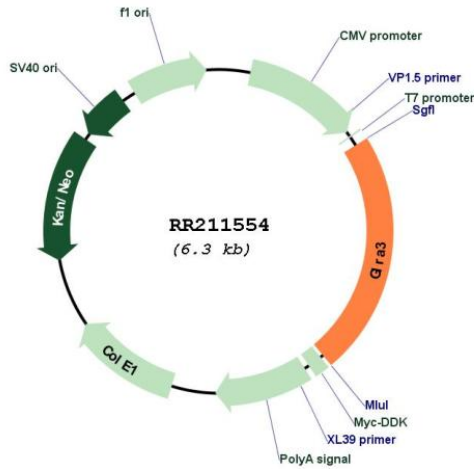
Cloning Scheme:

Cloning sites used for ORF Shutting:



* The last codon before the Stop codon of the ORF

Plasmid Map:



ACCN: NM_053724
 ORF Size: 1440 bp

OTI Disclaimer:	<p>Due to the inherent nature of this plasmid, standard methods to replicate additional amounts of DNA in E. coli are highly likely to result in mutations and/or rearrangements. Therefore, OriGene does not guarantee the capability to replicate this plasmid DNA. Additional amounts of DNA can be purchased from OriGene with batch-specific, full-sequence verification at a reduced cost. Please contact our customer care team at custsupport@origene.com or by calling 301.340.3188 option 3 for pricing and delivery.</p> <p>The molecular sequence of this clone aligns with the gene accession number as a point of reference only. However, individual transcript sequences of the same gene can differ through naturally occurring variations (e.g. polymorphisms), each with its own valid existence. This clone is substantially in agreement with the reference, but a complete review of all prevailing variants is recommended prior to use. More info</p>
OTI Annotation:	This clone was engineered to express the complete ORF with an expression tag. Expression varies depending on the nature of the gene.
Components:	The ORF clone is ion-exchange column purified and shipped in a 2D barcoded Matrix tube containing 10ug of transfection-ready, dried plasmid DNA (reconstitute with 100 ul of water).
Reconstitution Method:	<ol style="list-style-type: none"> 1. Centrifuge at 5,000xg for 5min. 2. Carefully open the tube and add 100ul of sterile water to dissolve the DNA. 3. Close the tube and incubate for 10 minutes at room temperature. 4. Briefly vortex the tube and then do a quick spin (less than 5000xg) to concentrate the liquid at the bottom. 5. Store the suspended plasmid at -20°C. The DNA is stable for at least one year from date of shipping when stored at -20°C.
RefSeq:	NM_053724.3 , NP_446176.3
RefSeq Size:	1443 bp
RefSeq ORF:	1443 bp
Locus ID:	114516
Cytogenetics:	16p11
MW:	55.6 kDa
Gene Summary:	ligand binding subunit of glycine receptor, chloride channel protein that mediates inhibition of neuronal activity in spinal cord and central nervous system [RGD, Feb 2006]