

Product datasheet for **RR211545**

Acsf2 (NM_001034951) Rat Tagged ORF Clone

Product data:

Product Type:	Expression Plasmids
Product Name:	Acsf2 (NM_001034951) Rat Tagged ORF Clone
Tag:	Myc-DDK
Symbol:	Acsf2
Vector:	pCMV6-Entry (PS100001)
E. coli Selection:	Kanamycin (25 ug/mL)
Cell Selection:	Neomycin



[View online »](#)

ORF Nucleotide Sequence:

>RR211545 representing NM_001034951
 Red=Cloning site Blue=ORF Green=Tags(s)

TTTTGTAATACGACTCACTATAGGGCGGCCGGAATTCGTCGACTGGATCCGGTACCGAGGAGATCTGCC
 GCC**CGCATCGCC**

ATGGCTGTCTACCTCGGGATGCTGCGTCTCGGGAGGCTGTGTGTCGCGAGCCTGGGGCGCGGGGGCCCC
 GGACGCCGCTCTCTCGACCTTGCCGAACCTCGAAGTTGCAGGGTGTCCCGCTTTCAGTTCTGGAATGGT
 GGACTGTACCAACCCCTTGCCATCGGGCGCCTCAGCTACATCCAGGGCCACACTGACTCCCATCTTGTG
 AACAAAATGTGGGCGAATGCCTTGATGCCACGGCGCAGAGGTTCCCAACAGAGAGGCTTTGGTTATCA
 TCCATGAAAACATCAGGCTGAACTTGCACAGCTCAAGGAGGAGGTGGACAGAGCTGCTTCTGGTCTTCT
 GAGTATTGGTCTCCGAAAAGGTGATCGGCTGGGTATGTGGGGACCCAACCTCTATGCGTGGGTGCTCATT
 CAGCTGGCCACTGCCAAGCAGGCATCATCTGGTGTCTGTGAACCCAGCCTACCAGGCCTCAGAAGTGG
 AATATGTCCTCAGAAAGGTAGGCTGCAAAGGTATTGTGTTCCCTAAACAATTCAAGACCCAGCAGTACTA
 CAACATCTGAAGCAGGCTGTCTGAGCTAGAAAAGGCCAGCCAGGGGCTTGAAGAGTGAGAGGCTC
 CCAGACCTGACTACAGTCATCTCAGTGGATGCTCCTTTCGCGGGGACCCTGCTCCTGGATGAAGTGGTGG
 CAGCCGGTGGCAAGGAACAGAACCTAGCCAGCTGCGGTACCACCAGGGGTTCTTGTCTGTATGACCC
 CATCAACATCCAGTTTACCTCGGGGACAACTGGAAACCCCAAGGGGGCCACTCTTCCCACCACAACATC
 GTAACAACCTCAACCTGATTGGCCAGCGTCTGAAGATGCCCGCGAAGACTGCAGAGGAGTTGCGCATGG
 TCCTGCCTGCCCTGTACCACTGCCTGGGCTCCGTGGGGGGCACAATGGTGTCTGTGGTGCATGGTGC
 CACCCTCTCTGTCTTCTCAAGCTCAATGGCAAGAAGGCACTGGAAGCCATCAGCAGAGAGAAAAGGC
 ACCCTCTATACGGCACACCCACGATGTTTGGATATTCTGAATCAGCCAGACTTCTCCAGTTACGATT
 TCACGACCATACGTGGAGGTGTGATTGCCGGTCCCTGGCACCCCGAATTGATTGAGCCATCATCAG
 CAAGATGAACATGAAGGAGCTGGTGGTTTATGGAACCACAGAGAACAGTCCTGTGACCTTCATGAAC
 TTTCCCGAGGACACCCTGGAGCAGAAGGCTGGAAGTGTAGGCAGAATTATGCCTCACACGGAGGCCCAGA
 TCGTGAACATGGAGACCGGGGAGCTGACCAAGCTGAACATGCCTGGAGAGCTGTGCATCCGAGGGTACTG
 CGTCATGCAGGGCTACTGGGGCAGCCACAGAAGACCTTCAAGCGTTGGGCAAGACAGATGGTATCGG
 ACAGGGGACATTGCCTCCATGGATGAGCAGGGCTTCTGCAGGATCGTGGGCCGATCGAAGGACATGATCA
 TCCGCGGTGGTGAACAATCTACCCTGCAGAGCTGGAGGACTTCTCCACAAGCACCCACAGGTGCAAGA
 AGCGCAGGTGGTGGGGTGAAGGACGATCGGATGGGGAGGAAATCTGCGCTTGCAATTCGGTGAAGAGC
 GGAGAGACCACCGGAGGAGGATCAAAGCTTCTGCAAAGGAAAGATTTCCATTTTAAAGTCCCC
 GATACATCGTGTGGTGAAGGCTATCCTCTACTGTCTCAGGAAAGATCCAGAAATTCAAACCTCCGAGA
 GCAGATGGAACAACATCTAAAAGT

ACGCGTACGCGGCCGCTCGAGCAGAACTCATCTCAGAAGAGGATCTGGCAGCAATGATATCCTGGATT
 ACAAGGATGACGACGATAAGGTTTAA

Protein Sequence:

>RR211545 representing NM_001034951
 Red=Cloning site Green=Tags(s)

MAVYLGMLRLGRLCVASLGARGPRTPLSRPWPNSKLQGVRAFSSGMVDCNPLPIGGLSYIQGHTDShLV
 NKTVGECLDATAQRFPNREALVIIHENIRLNFAQLKEEVDRAASGLLSIGLRKGDRLGMWGPNSYAWVLI
 QLATAQAGIILVSNPAYQASELEYVLKRVGCKGIVFPKQFKTQQYINILKQVCPLEKAQPGALKSERL
 PDLTTVIVSDAPLPGTLLLDEVVAAGGKEQNLALRYHQGFLSCYDPINIQFTSGTTGNPKGATLSHHNI
 VNNSNLIGQRLKMPAKTAEELRMVLPCLYHCLGSVGGTMSVSVHGATLLLSSPSFNGKKALEAISREK
 TLLYGTPTMFVDILNQPDFSSYDFTTIRGGVIAGSLAPPELIRAIISKMNMKELVVVYGTENSPVTFMN
 FPEDTLEQKAGSVGRIMPHTAQIVNMETGELTKLNMPGELCIRGYCVMQGYWGEPPQKTFETVQDRWYR
 TGDIASMDEQGFCRIVGRSKDMIIRGGENIYPAELEDFFHKHPQVQEAQVVGVKDDRMGEEICACIRLKS
 GETTTEEEIKAFCKGKISHFKIPRYIVFVEGYPLTVSGIKQFKLREQMEQHLKL

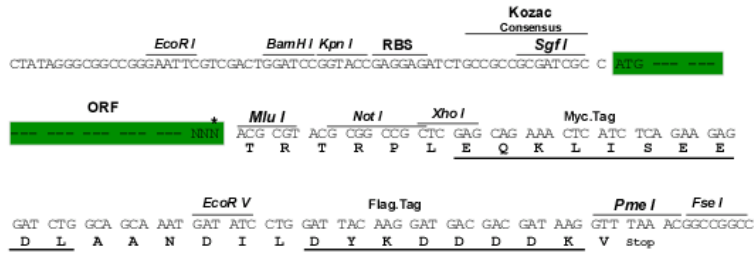
TRTRPLEQKLISEEDLAANDILDYKDDDDKV

Restriction Sites:

Sgfl-MluI

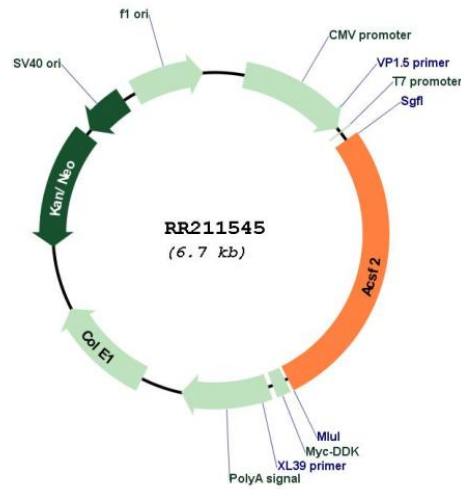
Cloning Scheme:

Cloning sites used for ORF Shutting:



* The last codon before the Stop codon of the ORF

Plasmid Map:



ACCN: NM_001034951
 ORF Size: 1845 bp

OTI Disclaimer:	The molecular sequence of this clone aligns with the gene accession number as a point of reference only. However, individual transcript sequences of the same gene can differ through naturally occurring variations (e.g. polymorphisms), each with its own valid existence. This clone is substantially in agreement with the reference, but a complete review of all prevailing variants is recommended prior to use. More info
OTI Annotation:	This clone was engineered to express the complete ORF with an expression tag. Expression varies depending on the nature of the gene.
Components:	The ORF clone is ion-exchange column purified and shipped in a 2D barcoded Matrix tube containing 10ug of transfection-ready, dried plasmid DNA (reconstitute with 100 ul of water).
Reconstitution Method:	<ol style="list-style-type: none">1. Centrifuge at 5,000xg for 5min.2. Carefully open the tube and add 100ul of sterile water to dissolve the DNA.3. Close the tube and incubate for 10 minutes at room temperature.4. Briefly vortex the tube and then do a quick spin (less than 5000xg) to concentrate the liquid at the bottom.5. Store the suspended plasmid at -20°C. The DNA is stable for at least one year from date of shipping when stored at -20°C.
RefSeq:	NM_001034951.1 , NP_001030123.1
RefSeq Size:	3095 bp
RefSeq ORF:	1848 bp
Locus ID:	619561
UniProt ID:	Q499N5
Cytogenetics:	10q26
MW:	67.9 kDa
Gene Summary:	Acyl-CoA synthases catalyze the initial reaction in fatty acid metabolism, by forming a thioester with CoA. Has some preference toward medium-chain substrates. Plays a role in adipocyte differentiation (By similarity).[UniProtKB/Swiss-Prot Function]