

Product datasheet for RR211509

Pank2 (NM_001106513) Rat Tagged ORF Clone

Product data:

Product Type: Expression Plasmids
Product Name: Pank2 (NM_001106513) Rat Tagged ORF Clone
Tag: Myc-DDK
Symbol: Pank2
Vector: pCMV6-Entry (PS100001)
E. coli Selection: Kanamycin (25 ug/mL)
Cell Selection: Neomycin
ORF Nucleotide Sequence: >RR211509 representing NM_001106513
Red=Cloning site Blue=ORF Green=Tags(s)

TTTTGTAATACGACTCACTATAGGGCGGCCGGGAATTCGTCGACTGGATCCGGTACCGAGGAGATCTGCC
GCC**CGATCGCC**

ATGGGAGCGGGCCGGTTGGCGCGCCTATGGAGCGCCAGGGCAGGGCTGCCGCCACCTCAGCCGCGGGCC
GCGAGTCTGCGGACTCCGAAGTGCAGGAGCGGGAGCCGCTCAGGCGCGGGCGAGTAGCGCGGCTCCGTC
AGAGTCAGGGCCGCGAGAGACTTGAGACGGGAGCGGCCGCTCCCTCGGCGGCTGTCTCGGCCGCC
CGCCCGCGGGCGAGGGCTCCGGAAGAGCGGCCGCTTTTTCCGTGGTTGGCTTGATATTGGAGGAA
CCCTGGTCAAGCTGGTTATTTGAACCTAAAGACATCACTGCTGAAGAAGAAAAGGAGGAAGTGGAGAG
TCTGAAAAGCATTGGAAGTACCTGACCTCCAATGTGGCTTATGGGTCGACAGGAATTCGGGACGTGCAC
CTTGAGCTGAAGGACCTGACTCTGTGTGGACGCAAAGGCAATCTGCACTTATACGCTTTCCCACTCATG
ACATGCCTGCTTTTATTCAAATGGGCAGAGATAAAAACTTCTCAAGTCTCCACACTGTCTTTGTGCCAC
TGGAGGTGGATCATACAAATTTGAGCAGGATTTCTCACAATAGGTGACCTTCAGCTTCGAAAACCTGGAT
GAACTAGATTGCTTAATAAAAAGGAATTTTATACATTGACTCAGTTGGATTCAATGGACGGTCACAGTGCT
ATTATTTGAAAACCTGCTGATTCTGAAAATGTCAGAAATTACATTTGATTTGAAAATCCATACCC
TCTGCTTCTGGTGAACATCGGCTCAGGGTTAGCATCTTAGCCGTGATTCCAAGGATAATTATAAGAGG
GTCACAGGCACCAAGTCTTGAGGAGGAACCTTTCTTTGGTCTCTGCTGCTTCTTACCGGCTGTAGTACTT
TTGAAGAAGCTCTTGAGATGGGCTCTCGTGGAGATAGCACCAAAGTGGACAAATAGTTCGAGACATTTA
TGGAGGAGACTATGAGAGATTTGGATTGCCAGGCTGGGCTGTGGCTTCAAGTTTTGGAAACATGATGAGC
AAGGAGAAGAGAGAGGCTGCTAGCAAGGAAGACCTTGCCAGAGCAACTTTGATCACCATCACCAACAACA
TTGGCTCCATAGCAAGAATGTGTGCTCTTAATGAAAACATTAACCAGGTTGATTTGTGCGCAATTTCT
GAGAGTCAACACAATCGCCATGCGGCTTCTGGCGTATGCTCTGGATTACTGGTCCAAGGGGCAGCTCAA
GCACTGTTTTAGAGCACGAGGTTATTTGGAGCTGTTGGCGCACTCCTTGAGCTGTTGAAGATACCC

ACGCGTACGCGGGCCGCTCGAGCAGAAAACCTCATCTCAGAAGAGGATCTGGCAGCAAATGATATCCTGGATT
ACAAGGATGACGACGATAAGGTTTAA



[View online »](#)

Protein Sequence: >RR211509 representing NM_001106513
Red=Cloning site Green=Tags(s)

MGAGRFGAPMERQGRAAATSAAAGESADSEVRRREPLRRRASSAAPSESGPAESLRRRERPGSLGGSVSAA
 RPRGEGLRKRRLFPWFGLDIGGTLVKLYVFEPKDIATAEEEEVEESLKSIRKYLTSNVAYGSTGIRDVH
 LELKDLTL CGRKGNLHFIRFPTHDMPAFIQMRDKNFSSLHTVFCATGGGSYKFEQDFLTIGDLQLRKLD
 ELDCLIKGILYIDSVGFNGRSQCYFFENPADSEKQKLPFDLKNPYPLLLVNIIGSGVSI LAVYSKDNYKR
 VTGTSLGGTFFGLCCLLTGCSTFEEALEMASRGDSTKVDKLVVDIYGGDYERFGLPGWAVASSFGNMMS
 KEKREAASKEDLARATLITITNNIGSIARMCALNENINQVVFVGNFLRVNTIAMRLLAYALDYWSKGQLK
 ALFSEHEGYFGAVGALLELLKIP

TRTRPLEQKLISEEDLAANDILDYKDDDDKV

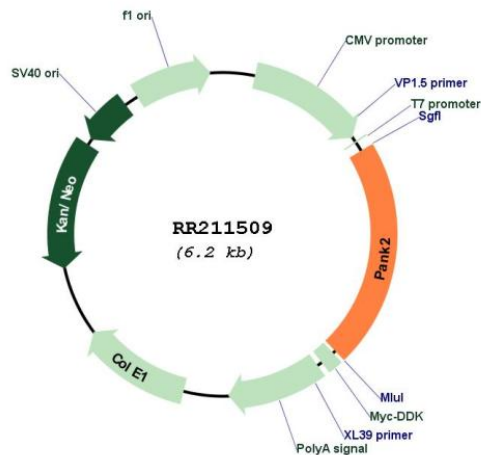
Restriction Sites:

SgfI-MluI

Cloning Scheme:



Plasmid Map:



ACCN:	NM_001106513
ORF Size:	1329 bp
OTI Disclaimer:	The molecular sequence of this clone aligns with the gene accession number as a point of reference only. However, individual transcript sequences of the same gene can differ through naturally occurring variations (e.g. polymorphisms), each with its own valid existence. This clone is substantially in agreement with the reference, but a complete review of all prevailing variants is recommended prior to use. More info
OTI Annotation:	This clone was engineered to express the complete ORF with an expression tag. Expression varies depending on the nature of the gene.
Components:	The ORF clone is ion-exchange column purified and shipped in a 2D barcoded Matrix tube containing 10ug of transfection-ready, dried plasmid DNA (reconstitute with 100 ul of water).
Reconstitution Method:	<ol style="list-style-type: none">1. Centrifuge at 5,000xg for 5min.2. Carefully open the tube and add 100ul of sterile water to dissolve the DNA.3. Close the tube and incubate for 10 minutes at room temperature.4. Briefly vortex the tube and then do a quick spin (less than 5000xg) to concentrate the liquid at the bottom.5. Store the suspended plasmid at -20°C. The DNA is stable for at least one year from date of shipping when stored at -20°C.
RefSeq:	NM_001106513.1 , NP_001099983.1
RefSeq Size:	1854 bp
RefSeq ORF:	1332 bp
Locus ID:	296167
Cytogenetics:	3q36
MW:	48.7 kDa