

Product datasheet for **RR211485**

Dlg2 (NM_022282) Rat Tagged ORF Clone

Product data:

Product Type:	Expression Plasmids
Product Name:	Dlg2 (NM_022282) Rat Tagged ORF Clone
Tag:	Myc-DDK
Symbol:	Dlg2
Synonyms:	Dlgh2
Mammalian Cell Selection:	Neomycin
Vector:	pCMV6-Entry (PS100001)
E. coli Selection:	Kanamycin (25 ug/mL)



[View online »](#)

ORF Nucleotide Sequence:

>RR211485 representing NM_022282
 Red=Cloning site Blue=ORF Green=Tags(s)

TTTTGTAATACGACTCACTATAGGGCGGCCGGAATTCGTCGACTGGATCCGGTACCGAGGAGATCTGCC
 GCC**CGGATCGCC**

ATGTTCTTTGCATGTTATTGTGCACTCCGGACTAACGTGAAGAAGTATCGATACCAAGATGAGGACGGTC
 CACATGATCATTCTTACCTCGGCTAACTCATGAAGTAAGAGGTCCAGAAGTGGTGCATGTGTCCGAAAA
 GAACCTCTCTCAATAGAAAATGTCACCGATATGTCTTACAGTCTCACATTTCTCTCTGAAGGCTAGC
 CCTGCTCTATAATTGTCAACACAGACTTTGGACTATTCTTATGTCAATGGAACAGAAAATTGAAT
 ATGAATTTGAAGAAATTACATTGGAGAGGGAAATTCAGGTCTGGGATTCAGTATTGCTGGAGGGACAGA
 TAATCCTCACATTGGAGATGACCCTGGCATATTTATTACGAAGATTATCCAGGAGGTGCTGCAGCAGAG
 GATGGCAGACTCAGGGTCAACGATTGTATCTTGGGGTGAATGAAGTTGATGTGTCGGAGGTTTCCACA
 GTAAGCAGTGGAGGCCCTCAAGGAAGCAGGCTCTATTGTTGACTGTATGTACGTAGAAGACGCCAT
 CCTGGAGACTGTTGTGAAATCAAATTTTCAAAGGGCCAAAAGTTTAGGCTTCAGTATTGCTGGAGGG
 GTGGGGAACAGCACATTTCCGGAGACAACAGCATTTATGTAACGAAAATTATAGATGGTGGAGCTGCAC
 AGAAAGATGGGAGGTTGCAAGTAGGAGACAGACTGCTAATGGTAAATAACTATAGTTTAGAAGAAGTTAC
 ACATGAAGAGGCTGTAGCGATATTGAAAAATACATCTGATGTTGTTTATCTAAAAGTTGGCAAACCCACA
 ACCATTTATAGACTGATCCTTATGGGCCACCGGATATTACTCACTCTTATTCTCCACCAATGAAAAATC
 ATCTACTGTCTGGTAACAATGGCAGGTTAGAATACAAAACATCCCTGCCGCCATCTCTCCAGGAAGGTA
 CTCACCAATTCAAAGCACATGCTGGTTGAAGTAGACTACACAAGGCCTCCGGAACCTGTTTACAGCACT
 GTGAATAAAGTGTGTGATAAACCTGCTTCTCCAGGCACTATCCCTGTTGAGTGTGACAAAAGCTTCC
 TTCTCTCAACTCCTTACCCCACTACCCTAGGCCTGCTCCCTGACTGACATGACCAAGTCAATCTCA
 GCACAGTACTGCAACTCGTCAGCCCTCAGTGACTCTCAAACGGGCCATCTCCCTGGAAGGGGAGCCCGA
 AAGGTGGTCTTCAAAAAGGCTCCACTGGCCTGGGCTTCAACATTGTGGGTGGAGAAGACGGAGAAGGTA
 TTTTTGTATCCTTCACTTCTGGCCGTGGACCAGCAGACCTGAGTGGGAGCTCCAGAGAGGAGACCAGAT
 TTTATCGGTGAATGGTATCGATCTCCGAGGAGCATCTCATGAACAGGCAGCTGCAGCACTGAAGGGGGC
 GGGCAGACAGTGACAATCATAGCACAATATCAACCTGAAGATTACGCTCGATTGAGGCCAAAATCCATG
 ACCTACGAGAGCAGATGATGAACCACAGCATGAGTTCGGGTCCGGTCCCTTGAACCAATCAGAAAACG
 CTCCCTGTATGTCAGAGCCATGTTTACTATGACAAGAGCAAGGACAGTGGACTGCCTAGCCAAGGACTT
 AGTTTTAAATATGGAGACATCCTTCAATGTCATCAATGCCTCTGATGATGAGTGGTGGCAAGCCAGAAGGG
 TCATACTAGATGGGACAGCGAGGAGATGGGAGTCAATCCAGCAACCGAGGGTGGAAAGAAAGGAGCG
 TGCCCGATTGAAGACAGTGAAGTTCAATGCAAAAACCTGGTGTGATTGATTCAAAAGGGGACATCCCGGA
 TTAGGTGACGACGGTTATGGAACAAAGACTCTGAGAGGACAAGAAGATCTCATTCTTTCCTATGAACCTG
 TCACGAGGCAGGAAATAAATACACCCGACAGTATTATCCTGGGCCCATGAAGGATCGAATCAATGA
 TGACTTGATATCTGAATTCCTGATAAATTTGGCTCCTGTGTGCCTCATACTACGAGGCCAAAGCGTGAC
 TACGAAGTCGACGGCAGAGACTACACTTTGTCAATTTCTAGAGAACAATGGAGAAGATATCCAAGAGC
 ACAAAATTAATAGAAGCCGGCCAGTACAATGACAATTTATGGAACCAAGTGTGCACTGTGAGATTTGT
 AGCAGTAAGGGGCAAACTGTACTTGTATGATGATCGGAAATGCTATTAAGCGTTACAAGTTGCCAG
 CTCTATCCATTGCTATCTTATAAAGCCAAGTCTCTGGAACCTCTGATGGAGATGAATAAGCGTCTAA
 CGGAGGAACAAGCCAAGAAAACCTATGACCGGGCAATTAAGCTAGAACAAGAATTTGGAGAATATTTTAC
 AGCTATTGTCCAAGGAGATACCTTAGAAGATATTTACAACCAATGCAAGCTTGTATTGAAGAGCAGTCT
 GGACCTTTCATCTGGATTCCCTCAAAGGAGAAGTTA

ACCGGTACGGGGCGCTCGAGCAGAACTCATCTCAGAAGAGGATCTGGCAGCAATGATATCCTGGATT
 ACAAGGATGACGACGATAAGGTTTAA

Protein Sequence: >RR211485 representing NM_022282
 Red=Cloning site Green=Tags(s)

MFFACYCALRTNVKRYQDEDGPHDHS L PRL THEVRGPELVHVSEKNLSQIENVHGYVLQSHISPLKAS
 PAPIIVNTDLDITIPYVNGTEIEYEFEEITLERGNSGLGFSIAGGTDNPHIGDDPGIFITKIIPGGAAAE
 DGRLRVNDCILRVNEVDVSEVSHSKAVEALKEAGSIVRLVYRRRRPILETVVEIKLFGKPKGLGFSIAGG
 VGNQHIPGDNSIYVTKIIDGGAQKDGRLQVGDRLLMVNNYSLEEVTHEEAVAILKNTSDVVYLKVGKPT
 TIYMTDPYGPDDITHSYSPMENHLLSGNNGTLEYKTS L PPI SPGRYSPIPKHMLVEDDYTRPPEPVYST
 VNKLCDKPASPRHYSPECDKSFLLSTPYPHYHLGLLPDSMTSHSQHSTATRQPSVTLQRAISLEGEPR
 KVVHLKSGTGLGFNI VGGEDGEGIFVSFILAGGPADL SGELQRGDQILSVNGIDLRGASHEQAAAALKGA
 GQTVTIIAQYQPEDYARFEAKIHDLREQMMNHSMSGSGSLRTNQKRS LYVRAMFDYDKSKDGLPSQGL
 SFKYGDILHVINASDDEWWQARRVILDGDSEEMGVIPSKRRVERKERARLKT VKFNAKPGVIDSKGDIPG
 LGDDGYGKT LRGQEDLILSYEPVTRQEIN YTRPVIILGPMKDRINDDLISEFPDKFGSCVPHTTRPKRD
 YEVDGRDYHFVISREQMEKDIQEHLIEAGQYNDNL YGTSVQSVRFVAVRGKHCILDVSGNAIKRLQVAQ
 LYPIAIFIKPKSLEPLMEMNKRL TEEQAKKTYDRAIKLEQEFGEYFTAI VQGD TLEDIYNQCKLVIEEQS
 GPF IWIPSKEKL

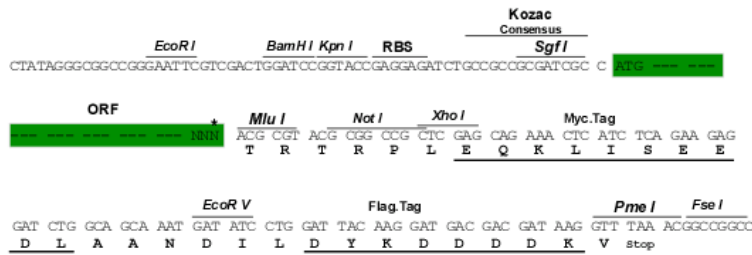
TRTRPLEQKLISEEDLAANDILDYKDDDDKV

Chromatograms: https://cdn.origene.com/chromatograms/ja2513_c08.zip

Restriction Sites: SgfI-MluI

Cloning Scheme:

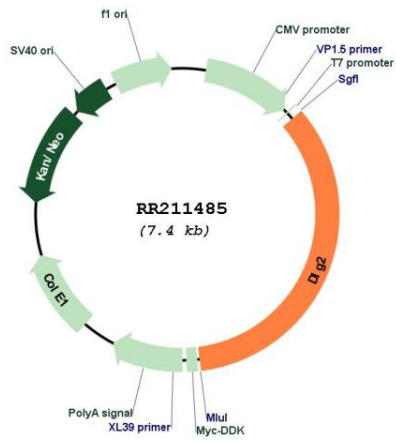
Cloning sites used for ORF Shuttling:



* The last codon before the Stop codon of the ORF

ACCN:	NM_022282
ORF Size:	2556 bp
OTI Disclaimer:	<p>Due to the inherent nature of this plasmid, standard methods to replicate additional amounts of DNA in E. coli are highly likely to result in mutations and/or rearrangements. Therefore, OriGene does not guarantee the capability to replicate this plasmid DNA. Additional amounts of DNA can be purchased from OriGene with batch-specific, full-sequence verification at a reduced cost. Please contact our customer care team at custsupport@origene.com or by calling 301.340.3188 option 3 for pricing and delivery.</p> <p>The molecular sequence of this clone aligns with the gene accession number as a point of reference only. However, individual transcript sequences of the same gene can differ through naturally occurring variations (e.g. polymorphisms), each with its own valid existence. This clone is substantially in agreement with the reference, but a complete review of all prevailing variants is recommended prior to use. More info</p>
OTI Annotation:	This clone was engineered to express the complete ORF with an expression tag. Expression varies depending on the nature of the gene.
Components:	The ORF clone is ion-exchange column purified and shipped in a 2D barcoded Matrix tube containing 10ug of transfection-ready, dried plasmid DNA (reconstitute with 100 ul of water).
Reconstitution Method:	<ol style="list-style-type: none"> 1. Centrifuge at 5,000xg for 5min. 2. Carefully open the tube and add 100ul of sterile water to dissolve the DNA. 3. Close the tube and incubate for 10 minutes at room temperature. 4. Briefly vortex the tube and then do a quick spin (less than 5000xg) to concentrate the liquid at the bottom. 5. Store the suspended plasmid at -20°C. The DNA is stable for at least one year from date of shipping when stored at -20°C.
RefSeq:	NM_022282.1 , NP_071618.1
RefSeq Size:	3002 bp
RefSeq ORF:	2559 bp
Locus ID:	64053
UniProt ID:	Q63622
Cytogenetics:	1q32
MW:	95.3 kDa
Gene Summary:	membrane associated guanylate kinase localized at postsynaptic density (PSD); may function to maintain the structure of PSD by concentrating its components to the membrane area [RGD, Feb 2006]

Product images:



Circular map for RR211485