

Product datasheet for **RR211468**

Slc34a2 (NM_053380) Rat Tagged ORF Clone

Product data:

Product Type:	Expression Plasmids
Product Name:	Slc34a2 (NM_053380) Rat Tagged ORF Clone
Tag:	Myc-DDK
Symbol:	Slc34a2
Mammalian Cell Selection:	Neomycin
Vector:	pCMV6-Entry (PS100001)
E. coli Selection:	Kanamycin (25 ug/mL)



[View online »](#)

ORF Nucleotide
Sequence:

>RR211468 representing NM_053380
 Red=Cloning site Blue=ORF Green=Tags(s)

TTTTGTAATACGACTCACTATAGGGCGGCCGGAATTCGTCGACTGGATCCGGTACCGAGGAGATCTGCC
 GCC**CGGATCGCC**

ATGGCTCCTTGGCCCCAGTTGGAAAATGCCACCCCAACCCCAATAAATTCATCGAAGGGGCCTCAGGTC
 CACAGTCTAGCATACCAGACAAAGACAAGGGGACCAGCAAAACAATGACAGCGGACTCCTGTAGCCAA
 GATTGAACTTCTACCCTCATATTCGCCCTGGTTCTCATAGAGGAGCCCCCTGAGGGGAACGACCCCTGG
 GACCTGCCTGAACTCCAAGACAATGGGATCAAATGGTCAGAGAGAGACTCCAAAGGGAAGATTCTCTGCA
 TTTTCCAGGGGATTGGGAAATTCATCCTTCTCTGGGTTTCTCTACTTGTTTGTGTCTCCCTGGATGT
 ACTCAGTAGTGCCTTCCAGCTTGTGGAGGAAAAATGGCCGGCCAGTTCTTCAGCAACAACCTCATTATG
 TCTAATCTGTGGCTGGACTTGTGATAGGGGTGCTGGTACAGTCATGGTGCAAAGCTCCAGCACGTCT
 CGTCAATCATCGTCAGCATGGTTGCCTCCTCCTTGTCTCAGTCCGCGCTGCCATCCCCATCATATGGG
 TGCTAACATCGGGACCTCCATCACCAACACGATTGTGGCACTTATGCAGGCAGGAGACAGAAATGAGTTC
 AGAAGGGCATTTCAGAGGACTACTGTCCATGACTTCTTCAACTGGCTCTCTGTGTGGTGTCTTACCTC
 TGGAGGCTGCCACCCATTACCTGGAGAACTGACCAACCTTGTGTGGAAACCTTCAGCTTCCAGAAATGG
 AGAAGATGCCCCAGACATTCTGAAAGTCATAACAGACCCCTTCACAAAGCTCATCATCCAGCTGGATAAA
 AAAGTCATCCAACAAATTGCAATGGGTGACTCAGAAGCCAGAACAGAGCCTGATCAAGATCTGGTGTA
 AAATAAAGCAATGTGATTGAGGAGAAATGCTACTGTCCCTCGCTGATAACTGCACCTCTCCTCATA
 TTGCTGGACTGATGGCATAACAGACCTGGACCATCCAGAATGTGACCGAGAAGGAGAACATTGCTAAATGC
 CAGCACATCTTCGTGAATTCAGCCTCCAGACCTCGCTGTGGGCATCATCTGCTACTGTCTCCCTGC
 TGATCCTTTGCGGCTGTCTGATCATGATTGTCAAACCTGTTGGTTCTGTGCTCAGGGGACAGGTTGCCAC
 TGTTCATCAAGAAGACCCTTAATACTGATTTCCCTTTCCCTTTGCCTGGCTGACTGGCTACCTGGCCATC
 CTGTGGGGCAGGCATGACCTTCATAGTGCAAAGCAGCTCTGTGTTCACTTCTGCCATGACGCCACTCA
 TCGGTATTGGGTGATCAGCATCGAGAGGGCATAATCCACTCACGCTGGGCTCCAACATTGGCACCACCAC
 GACTGCCATTCTGGCTGCCTTGGCCAGCCAGGCAACACATTGAGGAGTTCCTCCAGATTGCCCTGTGC
 CATTCTTTCTTCAACATCTCTGGAATATTGCTGTGGTACCCAATCCATTACCCGTCTGCCATCCGTC
 TGGCTAAAGGCCTGGGCAACATCTTGCCAAGTATCGCTGGTTCGCAGTCTTCTATCTCATCTTCTTCTT
 CCTCCTGACCCCGCTGACAGTGTGGCCTGTCCCTGGCTGGCTGGCCAGTGTGGTGGGCGTGGGTGTG
 CCCATCATCTGCTGATCCTCCTGGTCTGTGCCTCCGGATGCTGCAGGCCCGCTGCCCTGCATCCTGC
 CCCTGAAGCTCCGGGACTGGAATTCCTACCCTTGTGGATGCACTCTCTGAAACCCTGGGACAACATCAT
 CTCCTGGCCACCTCCTGCTTCCAGAGGCGCTGTTGCTGCTGTTGCCGTGTGTGCTGCCGTGTCTGCTGC
 ATGGTGTGTGGCTGCAAGTGTGCCGCTGCAGCAAGTGTGCAAGAACCTGGAGGAGGAGGAAAAGGAGC
 AGGACGTCCCAGTCAAGGCTTCTGGGGCTTTGACAATACAGCTATGAGCAAAGAATGCCAAGATGAGGG
 CAAGGGCCAAGTGAAGTTCTGGGCATGAAGGCCCTGTCCAACACTACAGTGTTT

ACGCGTACGCGGCCGCTCGAGCAGAACTCATCTCAGAAGAGGATCTGGCAGCAATGATATCCTGGATT
 ACAAGGATGACGACGATAAGGTTTAA

Protein Sequence: >RR211468 representing NM_053380
 Red=Cloning site Green=Tags(s)

MAPWPELENAHPNPNKFIEGASGPQSSIPDKDKGTSKTNDSGTPVAKIELLPSYSALVLIIEPPEGNDPW
 DLPELQDNGIKWSEKSKGKILCFQIGKFIILLGFLYLFVCSLDVLSAFQLVGGKMGQFFSNNSIM
 SNPVAGLVIGVLVTVMVQSSSTSSIIIVSMVASSLLSVRAAIIIMGANIGTSITNTIVALMQAGDRNEF
 RRAFAGATVHDFNWL SVLVLLPLEAATHYLEKLTNLVLETF SFQNGEDAPDILKVIDPFTKLIQLDK
 KVIQIAMDSEAQNKSLIKIWCKTISNVIEENVTVSPDNCTSPSYCWTGDIQTWTIQNVTEKENIAKC
 QHIFVNFSLPDLAVGIILLTVSLLILCGCLIMIVKLLGSLVLRGQVATVIKKTNTDFPFPAWLTGYLAI
 LVGAGMTFIVQSSSVFTSAMTPLIGIGVISIERAYPLTLGSGNIGTTTTAILAALASPGNTRSSLQIALC
 HFFFNISGILLWYPIPFTRLPIRLAKGLGNISAKYRWFVYLIFFLLTPLTVFGLSLAGWPVLVGVGV
 PIILLILLVLCRMLQARCPRIPLKLRDWNFLPLWMHSLKPWDNIISLATSCFQRRCCCCCRVCCRVC
 MCGCKCCRCCKCNLEEEKEQDVPVKASGGFDNTAMSKECQDEGKGQVEVLGMKALSNTTVF

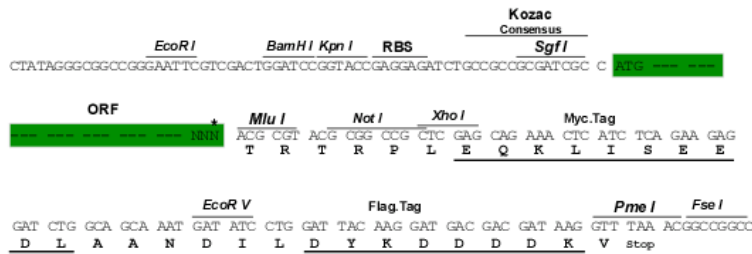
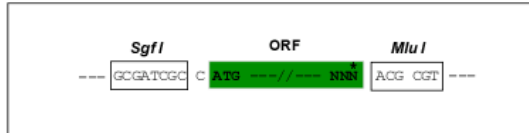
TRTRPLEQKLISEEDLAANDILDYKDDDDKV

Chromatograms: https://cdn.origene.com/chromatograms/ja1977_g07.zip

Restriction Sites: Sgfl-MluI

Cloning Scheme:

Cloning sites used for ORF Shuttling:



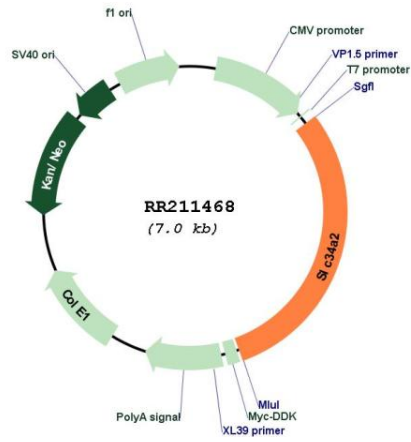
* The last codon before the Stop codon of the ORF

ACCN: NM_053380

ORF Size: 2085 bp

OTI Disclaimer:	<p>Due to the inherent nature of this plasmid, standard methods to replicate additional amounts of DNA in E. coli are highly likely to result in mutations and/or rearrangements. Therefore, OriGene does not guarantee the capability to replicate this plasmid DNA. Additional amounts of DNA can be purchased from OriGene with batch-specific, full-sequence verification at a reduced cost. Please contact our customer care team at custsupport@origene.com or by calling 301.340.3188 option 3 for pricing and delivery.</p> <p>The molecular sequence of this clone aligns with the gene accession number as a point of reference only. However, individual transcript sequences of the same gene can differ through naturally occurring variations (e.g. polymorphisms), each with its own valid existence. This clone is substantially in agreement with the reference, but a complete review of all prevailing variants is recommended prior to use. More info</p>
OTI Annotation:	This clone was engineered to express the complete ORF with an expression tag. Expression varies depending on the nature of the gene.
Components:	The ORF clone is ion-exchange column purified and shipped in a 2D barcoded Matrix tube containing 10ug of transfection-ready, dried plasmid DNA (reconstitute with 100 ul of water).
Reconstitution Method:	<ol style="list-style-type: none"> 1. Centrifuge at 5,000xg for 5min. 2. Carefully open the tube and add 100ul of sterile water to dissolve the DNA. 3. Close the tube and incubate for 10 minutes at room temperature. 4. Briefly vortex the tube and then do a quick spin (less than 5000xg) to concentrate the liquid at the bottom. 5. Store the suspended plasmid at -20°C. The DNA is stable for at least one year from date of shipping when stored at -20°C.
RefSeq:	NM_053380.2 , NP_445832.1
RefSeq Size:	3515 bp
RefSeq ORF:	2088 bp
Locus ID:	84395
UniProt ID:	Q9JJ09
Cytogenetics:	14q11
MW:	76.4 kDa
Gene Summary:	may act as a sodium dependent phosphate transporter; may provide inorganic phosphate for the synthesis of lung surfactant [RGD, Feb 2006]

Product images:



Circular map for RR211468