

Product datasheet for **RR211454**

Ptf1a (NM_053964) Rat Tagged ORF Clone

Product data:

Product Type:	Expression Plasmids
Product Name:	Ptf1a (NM_053964) Rat Tagged ORF Clone
Tag:	Myc-DDK
Symbol:	Ptf1a
Mammalian Cell Selection:	Neomycin
Vector:	pCMV6-Entry (PS100001)
E. coli Selection:	Kanamycin (25 ug/mL)
ORF Nucleotide Sequence:	>RR211454 representing NM_053964 Red=Cloning site Blue=ORF Green=Tags(s)

TTTTGTAATACGACTCACTATAGGGCGGCCGGGAATTCGTCGACTGGATCCGGTACCGAGGAGATCTGCC
GCC**CGGATCGCC**

ATGGACGCCGTGCTCCTGGAGCATTTCCTCGGGGCCCTGGACACCTTCCCGTCTCTTACTTCGATGAGG
AAGATTCTTCACCGATCAGTCCTCTCGGGACCCACTGGAGGACGGCGACGAGCTGTGGGGGATGAGCA
GGCGGAGGTAGAGTTCCTCAGTCACCAGCTGCACGAATACTGCTACCGCGACGGGGCGTGCCTGTGCTG
CAACCTGCGCCCTCGGCGGCCCGCACGCGCTCGCTCCGCCCTTTGGGGACCCTGGCGAGCCCGAGG
ACAGCGGCAGCTATTGCTGCGATGCAGGGGCGCCTCTTGGTGCCTTCCCTACTCGCCTGGCTCACCG
CTCCTGTCTCGCCTACCCTTGACCCGCGTACTGTCCCCCGGTACGCGGCTCCGTGGTTTGAACGGGGCA
GCGGCAGCGGGCGGCGGCCGCAAGGCGGCGGCGACGCGTGCCTCCGAGGCAGAGCTGCAGCAGCTGC
GACAAGCGGCCAACGTGCGAGAGCGGCCCGCATGCAGTCTATCAACGACGCCTTCGAGGGGCTGCGTTC
GCACATCCCCACGCTGCCCTACGAAAAGCGCCTCTCCAAGGTAGACACGCTGCGCTTAGCCATAGGCTAC
ATTAATTCTCAGCGAGCTGGTGAAGCCGACTTGCCACTGCGCGGAGTGGCACAGGTGGTTGCGGGG
GCCAGGTGGCAGCCGGCACCTCGGAGGGGACAGCCAGGTAACCAGGCCAGAAGGTCATCATCTGCCA
TCGAGGCACCCGTTCCGCTCCCGCAGCGACCCGACTACGGTCTCCCTCTTGCAGGGCACTCCCTT
TCTGGGCTGATGAAAAACAGCTCAAAGAACAAAATATTATTCGTACAGCTAAAGTGTGGACCCAGAGG
ACCCAGAAAACCAACAGTAAATCTTTGACAACATAGAGAACGAACCACCTTTTGGAGTTTGTGTCC

AG**CGGACCG**ACGCGTACGCGGCCGCTCGAGCAGAAAACCTCATCTCAGAAGAGGATCTGGCAGCAAATGATATCC
TGGATTACAAGGATGACGACGATAAGGTTTAA



[View online »](#)

Protein Sequence: >RR211454 representing NM_053964
Red=Cloning site Green=Tags(s)

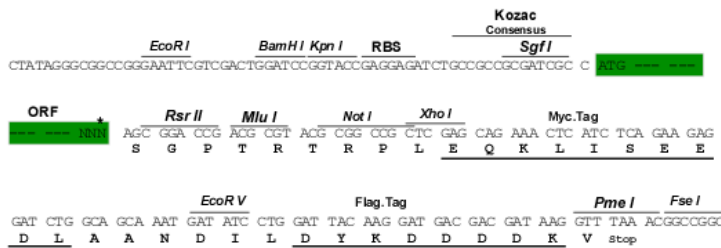
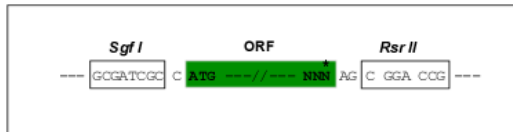
MDAVLLEHFPGALDTPSSYFDEEDFFTDQSSRDPLEDGDPELLGDEQAEVEFLSHQLHECYRDGACLLL
 QPAPSAAPHALAPPPLGDPGEPEDSGSYCCDAGAPLGAFPYSPGSPSCLAYPCTAVLSPGTRLRGLNGA
 AAAAAAAAAARRRRRVRSEAELQQLRQAANVRERRRMQSINDAFEGLRSHIPTLPYEKRLSKVDTLRLAIGY
 INFLSELVQADLPLRSGTGGCGGPGGSRHLGGDSPGNQAQKVIICHRGTRSPSPDPDYGLPPLAGHSL
 SWADEKQLKEQNIIRTAKVWTPEDPRKLNKSFNDNIENEPFFEVV

SGPTRTRPLEQKLISEEDLAANDILDYKDDDDKV

Restriction Sites: SgfI-RsrII

Cloning Scheme:

Cloning sites used for ORF Shuttling:



* The last codon before the Stop codon of the ORF

ACCN: NM_053964

ORF Size: 978 bp

OTI Disclaimer: The molecular sequence of this clone aligns with the gene accession number as a point of reference only. However, individual transcript sequences of the same gene can differ through naturally occurring variations (e.g. polymorphisms), each with its own valid existence. This clone is substantially in agreement with the reference, but a complete review of all prevailing variants is recommended prior to use. [More info](#)

OTI Annotation: This clone was engineered to express the complete ORF with an expression tag. Expression varies depending on the nature of the gene.

Components: The ORF clone is ion-exchange column purified and shipped in a 2D barcoded Matrix tube containing 10ug of transfection-ready, dried plasmid DNA (reconstitute with 100 ul of water).

Reconstitution Method:

1. Centrifuge at 5,000xg for 5min.
2. Carefully open the tube and add 100ul of sterile water to dissolve the DNA.
3. Close the tube and incubate for 10 minutes at room temperature.
4. Briefly vortex the tube and then do a quick spin (less than 5000xg) to concentrate the liquid at the bottom.
5. Store the suspended plasmid at -20°C. The DNA is stable for at least one year from date of shipping when stored at -20°C.

RefSeq: [NM_053964.1](#), [NP_446416.1](#)

RefSeq Size: 1532 bp

RefSeq ORF: 981 bp

Locus ID: 117034

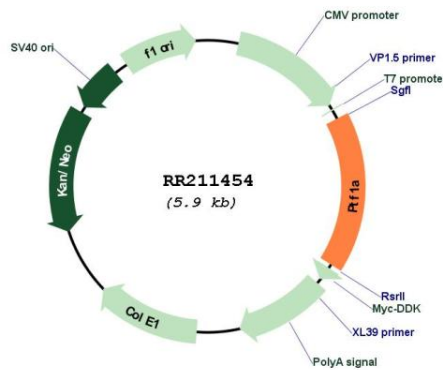
UniProt ID: [Q64305](#)

Cytogenetics: 17q12.3

MW: 35.3 kDa

Gene Summary: DNA-binding subunit of the transcription factor [RGD, Feb 2006]

Product images:



Circular map for RR211454