

## Product datasheet for **RR211440**

### Prkcd (NM\_133307) Rat Tagged ORF Clone

#### Product data:

Product Type:	Expression Plasmids
Product Name:	Prkcd (NM_133307) Rat Tagged ORF Clone
Tag:	Myc-DDK
Symbol:	Prkcd
Synonyms:	Pkcd
Vector:	pCMV6-Entry (PS100001)
E. coli Selection:	Kanamycin (25 ug/mL)
Cell Selection:	Neomycin



[View online »](#)

ORF Nucleotide  
Sequence:

>RR211440 representing NM\_133307  
Red=Cloning site Blue=ORF Green=Tags(s)

TTTTGTAATACGACTCACTATAGGGCGGCCGGAATTCGTCGACTGGATCCGGTACCGAGGAGATCTGCC  
GCC**CGGATCGCC**

ATGGCACCGTTCTCGCATCTCCTTCAATTCCTATGAGCTGGGCTCCCTGCAGGCGGAGGACGACGCAA  
GCCAGCCTTTCTGTGCCGTGAAGATGAAGGAGGCACTCACACAGACCGAGGGAAGACTCTGGTACAGAA  
GAAGCCCACCATGTACCCTGAGTGAAGTCAACATTTCGACGCCACATCTATGAAGGCCGTGCATCCAG  
ATCGTGCTGATGCGGGCAGCTGAAGACCCCATGTCGGAGGTGACCGTGGGCGTGTGAGTGTGGCTGAGC  
GCTGCAAGAAGAACAACGGCAAGGCTGAGTTCTGGCTGGACCTGCAGCCTCAGGCCAAGGTGCTGATGTG  
TGTGCAGTATTTCTGGAGGATGGGGATTGCAACAGTCCATGCGTAGTGAGGAGGAGGCCATGTTCCCA  
ACTATGAACCGCCGTGGAGCCATTAACAGGCCAAGATTCCTACATCAAGAACCAGAGTTCATCGCCA  
CCTTCTTTGGGCAGCCACCTTCTGTTCTGTGTGCAAAGAGTTTGTCTGGGGCTCAACAAGCAAGGCTA  
CAATGCAGGCAATGCAACGCTGCCATCCATAAGAAATGCATCGACAAGATTATCGGCCGCTGCACTGGC  
ACTGCTACCAATAGCCGGGACACCATCTCCAGAAAGAACGCTTCAACATCGACATGCCTCACCGATTCA  
AGGTCTATAACTACATGAGCCCCACCTTCTGTGACCCTGTGGCACTTTGCTCTGGGGATTGGTGAACA  
GGGATTAAGTGTGAAGACTGCGGCATGAATGTGCACCACAAATGCCGGGAGAAGGTGGCCAACCTGTGT  
GGTATCAACAAAAGCTCTTGGCTGAGGCTTGAACCAAGTGACCAGAAAGCTTCCCGAAGCCAGAGA  
CACCAGAGACTGTCGGAATATACCAGGGATTGAGAGAAGAGACAGCTGTCTCTGGGAATGACATCCCAGA  
CAACAACGGGACCTATGGCAAGATCTGGGAGGGGAGCAACCGGTGCCGCTTGAAGAACTTCACTTCCAG  
AAAGTACTTGGCAAAGGACGCTTGGCAAGGACTGCTTGCAGAACTGAAGGGCAAGGAAAGGTACTTTG  
CAATCAAGTACCTGAAGAAGGACGTGGTGTGATCGACGATGACGTGGAGTGCACCATGGTGGAGAAGCG  
GGTGTGGCGCTCGCCTGGGAGAATCCCTTCTCACCCATCTCATCTGTACCTTCCAGACCAAGGACCAC  
CTCTTCTTTGTGATGGAGTTCCTCAATGGGGCGATCTGATGTTCCACATTCAGGACAAAGGCCGCTTCG  
AACTCTACCGGGCTACGTTTTATGCAGCTGAGATCATCTGCGGACTGCAGTTTCTACATGGCAAAGGCAT  
CATTTACAGGGACCTCAAGCTAGACAATGTAATGCTGGACAAGGATGGCCACATCAAGATTGCTGACTTC  
GGGATGTGCAAAGAGAATATATTTGGGGAGAACCAGGAGCAGCATTCTGCGGCACTCCTGACTACATCG  
CCCCTGAGATCCTGCAGGGCCTGAAGTACTCATTTTCCGTGGACTGGTGGTCTTTGGGGTCTCCTCTA  
TGAGATGCTCATTGGCCAGTCCCCTTCCATGGTATGATGAGGACGAGCTCTTTGAGTCCATCCGGGTG  
GACACACCACACTACCCGCGCTGGATACCAAGGAGTCCAAGGACATCATGGAGAAGCTCTCGAGAGGG  
ACCCTGCCAAGAGGCTGGGAGTAACAGGAAACATCAGGCTTACCCCTTTTTCAAGACTATCAACTGGAA  
CCTGCTGGAGAAGCGGAAGGTGGAGCCGCCCTTAAGCCCAAAGTGAATCCCCTTCAGACTACAGCAAC  
TTTGACCCAGAGTTCTGAATGAGAAACCCCACTTCTCTTCAAGTACAAGAACCTCATCGACTCTATGG  
ACCAGACAGCCTTCAAGGGCTTCTCCTTTGTGAACCCCAATATGAGCAATTCTGGAA

**ACGCGT**ACGCGGCCGCTCGAGCAGAACTCATCTCAGAAGAGGATCTGGCAGCAATGATATCCTGGATT  
ACAAGGATGACGACGATAAGGTTTAA

Protein Sequence: >RR211440 representing NM\_133307  
 Red=Cloning site Green=Tags(s)

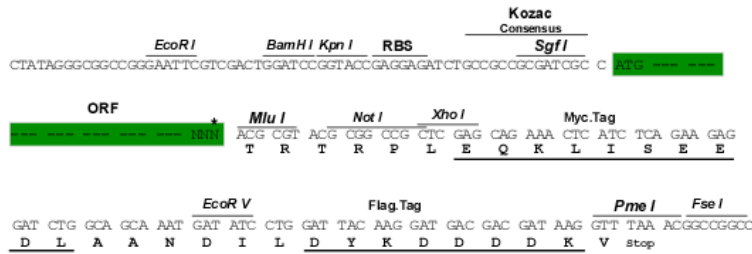
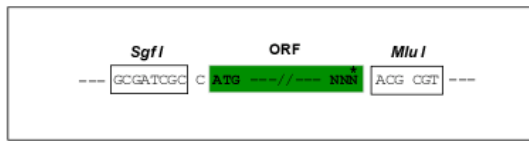
MAPFLRISFNSYELGSLQAEDDASQPFCVAVKMEALTTDRGKTLVQKKPTMYPEWKSTFDAHIYEGRVIQ  
 IVLMRAAEDPMSEVTVGVSVLAERCKKNNNGKAEFWLDLQPQAKVLMCVQYFLEDGCKQSMRSEEEAMFP  
 TMNRRGAIKQAKIHYIKNHEFIATFFGQPTFCVCKEFVWGLNKQGYKCRQCNAAIHKKCIDKIIGRCTG  
 TATNSRDTIFQKERFNIDMPHRFKVYNYMSPTFCDHC GTLLWGLVKQGLKCEDCGMNVHHKCREKVANLC  
 GINQKLLAEALNQVTQKASRKPEPETVGIYQGF EKKTAVSGNDIPDNNGTYGKIWEGSNRCLENFTFQ  
 KVLGKGSFGKVL LAELK GKERYFAIKYLK KD VVLI DDDVECTMVEKRVLALAWENPFLTHLICTFQTKDH  
 LFFVMEFLNNGDLMFHIQDKGRFELYRATFYAAEIIICGLQFLHGKGIYRDLKLDNVMLDKDGHKIDAF  
 GMCKENIFGENRASTFCGTPDYIAPEILQGLKYSFVDWWSFGVLLYEMLIGQSPFHGDDEDEL FESIRV  
 DTPHYPRWITKESKDIMEKLFERDPAKRLGVTGNIRLHPFFKTINWNLLEKRKVEPPFKPKVKSPSDYSN  
 FDPEFLNEKPQLSFSKLNLDSDMQTAFKGF SFVNP KYEQFLE

TRTRPLEQKLISEEDLAANDILDYKDDDDKV

Restriction Sites:  
 Cloning Scheme:

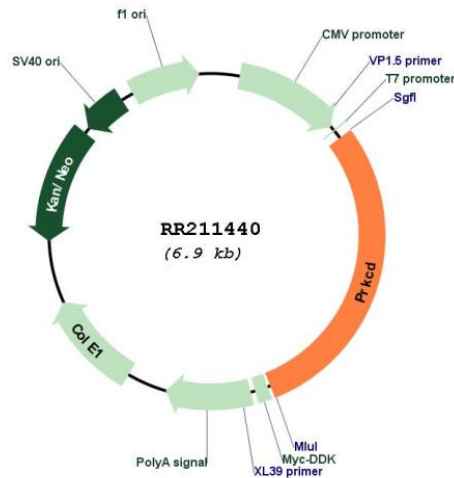
Sgfl-MluI

Cloning sites used for ORF Shuttling:



\* The last codon before the Stop codon of the ORF

## Plasmid Map:



ACCN: NM\_133307

ORF Size: 2019 bp

**OTI Disclaimer:** The molecular sequence of this clone aligns with the gene accession number as a point of reference only. However, individual transcript sequences of the same gene can differ through naturally occurring variations (e.g. polymorphisms), each with its own valid existence. This clone is substantially in agreement with the reference, but a complete review of all prevailing variants is recommended prior to use. [More info](#)

**OTI Annotation:** This clone was engineered to express the complete ORF with an expression tag. Expression varies depending on the nature of the gene.

**Components:** The ORF clone is ion-exchange column purified and shipped in a 2D barcoded Matrix tube containing 10ug of transfection-ready, dried plasmid DNA (reconstitute with 100 ul of water).

**Reconstitution Method:**

1. Centrifuge at 5,000xg for 5min.
2. Carefully open the tube and add 100ul of sterile water to dissolve the DNA.
3. Close the tube and incubate for 10 minutes at room temperature.
4. Briefly vortex the tube and then do a quick spin (less than 5000xg) to concentrate the liquid at the bottom.
5. Store the suspended plasmid at -20°C. The DNA is stable for at least one year from date of shipping when stored at -20°C.

**RefSeq:** [NM\\_133307.1](#), [NP\\_579841.1](#)

RefSeq Size: 2909 bp  
RefSeq ORF: 2022 bp  
Locus ID: 170538  
UniProt ID: [P09215](#)  
Cytogenetics: 16p16  
MW: 77.5 kDa  
Gene Summary: mediates mitochondrial-dependent apoptosis [RGD, Feb 2006]