

Product datasheet for **RR211405**

Gbp5 (NM_001108569) Rat Tagged ORF Clone

Product data:

Product Type:	Expression Plasmids
Product Name:	Gbp5 (NM_001108569) Rat Tagged ORF Clone
Tag:	Myc-DDK
Symbol:	Gbp5
Vector:	pCMV6-Entry (PS100001)
E. coli Selection:	Kanamycin (25 ug/mL)
Cell Selection:	Neomycin



[View online »](#)

ORF Nucleotide Sequence:

>RR211405 representing NM_001108569
 Red=Cloning site Blue=ORF Green=Tags(s)

TTTTGTAATACGACTCACTATAGGGCGGCCGGAATTCGTCGACTGGATCCGGTACCGAGGAGATCTGCC
 GCC**CGGATCGCC**

ATGGCCCCAGAGATTCACATGCCAGAACCATATGCCTCATTGCGAACACGGATGAACACCTAGTGACTA
 ACCAGGAAGCCCTGGAGATCCTGTCAGCCATCACACAGCCGGTGGTGGTGGCCATTGTTGGCCCTCA
 CCGCACAGGCAAATCCTACCTGATGAACAAGCTGGCTGGGAAGGAGAAAGGCTTTTCCGTGGGCTCCACT
 GTTCAGTCTCACACCAAGGGCATCTGGATGTGGTGTGTCGCCACCCTAAAAGCCAGACCACACTTTGG
 TTCTGTTGGACACTGAGGGCCTGGGAGATGTGGAGAAGTTGATGAAAAGAATGATATTCAGATCTTCGC
 ACTGGCGATCCTCCTCAGTAGCACCTTCGTATACAACACCATGAGCAAAATTGACCAGGGGGCTATCGAC
 CTACTGCACAGTGCACAGAGCTGACAGATCTGCTCCGGACAAGGAACACCTCTGATCCCAGTGAACCA
 AGGAACCTGATGACATGAGCTTCTCCAGACTGGTGTGGACTCTGAGAGATTTCTTCTGGCCCTGGA
 AGTCAATGGGCAAGCCATCACATCAGATGAATATCTGGAGAAGTCGCTGATGCTGAAGCAAGGTAGTGAT
 GAAAGGACCCAAACATCAATCTACCTCGCTGTGCATACAGAAGTTCTCCAGTAAAGAAATGCTTTG
 TTTTGTACTCTCCTGCTCTCGGAAGTAACTTTCTCAGCTTCAAACACTCAACAGTGATGAGCTGAACCC
 TGATTTTGTGCAGAACCTTTCAGAATTCTGTTCTCACATCTTCACACATTCTAAGACCAAGACTCTTCCA
 GGAGGCATCCAGGTCAATGGACCTCGTCTGAAAGCATGGTGCAGACCTATGTGGATGCTATCAACAGTG
 GGGCTCTTCTCCATGGAGAACATGGTGGTAACTTGACCCGGAGAGAGAACACAGCAGCAGTGCAAAA
 GGCCATTGCTCACTATGACCAACAGATGAGTCAGAAGTGCAGCTGCCACAGAGACCCTCCAAGTCTG
 CTGGACCTGCACAAGACCTGTGAGAAAGAAGCCATAGAAATCTTCAGGAAGCGTTCTTTCAAGGATGATG
 ACCAATGTTTCCAGAAAGAATTGGAGAGCCTACTAAGTCAAAGCGGGATGAGATTTGTAGGAAGAACGA
 GGATGCTTCTGCAGCCCTCTGCTCAACCCTACTTCAGAGTACTTTTCAGCCTCTGGAACAAGAGTGGCA
 CGGGGGTCTATGCTAAACCAGGAGACACAGTCTCTTCTTCAGAGGATGGAACAGTTGAAGGCACAGT
 ACCGCCAGCAGCCGGGAAGGGAACACAGGCTGAGGAAGTTCTGCAGAAATATCTGAAAGCCAAGGAACC
 AGTGAGCGCTACAATTCTACAAACAGACCAGGATCTCACAGCCAAAGAGAAGCAGAAAAAGAGGAACAA
 GCAAGAGCGGAGGCTGCCGGGCTGAAGCACAGAGGTTGGAGGCTCTTCGAGTCCAGGAAGGCAAGGA
 GAGTAGAGCAGGAGAGAAGGCATCAAGAGCATCTGAGGCAATAGAGTTTGAAGGGCAAACCTCCAGAG
 AGAGCAACAGAGGAAGCAGAAGCAGAGGGTCCAGGAAGAGATGGAAGGATCAAGGCAGAGCAGGAAGCT
 CAACTCAGAGCACTTCAACAGCAGCTCCAAACATGAGGGTAATAAGCCACCACGAACATGACCAGTGTA
 TAATAATC

ACGCGTACGCGGCCGCTCGAGCAGAAACTCATCTCAGAAGAGGATCTGGCAGCAAATGATATCCTGGATT
 ACAAGGATGACGACGATAAGGTTTAA

Protein Sequence:

>RR211405 representing NM_001108569
 Red=Cloning site Green=Tags(s)

MAPEIHMPEPICLIANTDEHLVTNQEALEILSAITQPVVVVAIVGLYRTGKSYLMNKLKAGKEKGFVSGST
 VQSHTKGIWMWCVPHQKPDHTLVLLDTEGLDVEKVDEKNDIQIFALAILLSSTFVYNTMSKIDQGAID
 LLHSVTELDLLRTRNTSDPSETKEPDDMSFFPDLVWTLRDFFLGLEVNGQAITSDEYLEKSLMLKQGS
 ERTQTFNLPRLCIQKFFPVKKCFVFDSPALGSKLSQLQTLNSDELNPDFVQNLSEFCSHIFTHSKTKLP
 GGIQVNGPRLSMVQTYVDAINS GALPSMENMVVTLTRRENTAAVQKAI AHYDQMSQVQLPTETLQLL
 LDLHKTCEKEAIEIFRKRSFKDDDQCFQKELESLLSAKRDEICRKNEDASAALCSTLLQSTFQPLEQEVA
 RGVYAKPGGHSFLQRMEQLKAQYRQPGKGTQAEVQLKYLKAKEPVSATILQTDQDLTAKEKQKKEEQ
 ARAEAARAEARLEALRVQEEQRRVEQERRHQEHLRQIEFERANFQREQRQKQKRVQEEMERIKAEQEA
 QLRALQQQLQNM RVISHHEHDQCIII

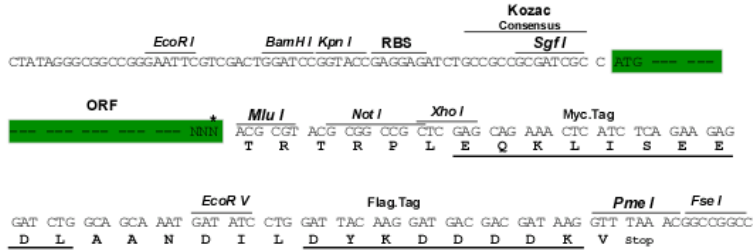
TRTRPLEQKLISEEDLAANDILDYKDDDDKV

Restriction Sites:

Sgfl-MluI

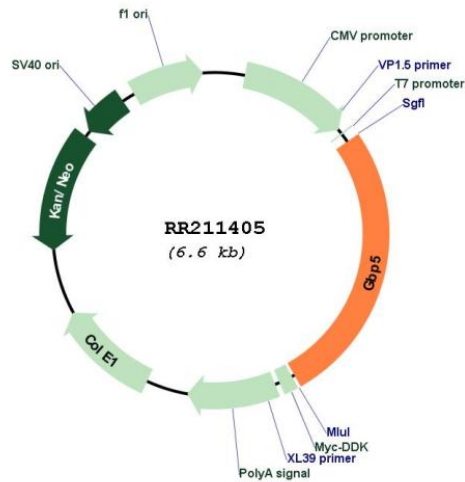
Cloning Scheme:

Cloning sites used for ORF Shutting:



* The last codon before the Stop codon of the ORF

Plasmid Map:



ACCN:

NM_001108569

ORF Size:	1758 bp
OTI Disclaimer:	The molecular sequence of this clone aligns with the gene accession number as a point of reference only. However, individual transcript sequences of the same gene can differ through naturally occurring variations (e.g. polymorphisms), each with its own valid existence. This clone is substantially in agreement with the reference, but a complete review of all prevailing variants is recommended prior to use. More info
OTI Annotation:	This clone was engineered to express the complete ORF with an expression tag. Expression varies depending on the nature of the gene.
Components:	The ORF clone is ion-exchange column purified and shipped in a 2D barcoded Matrix tube containing 10ug of transfection-ready, dried plasmid DNA (reconstitute with 100 ul of water).
Reconstitution Method:	<ol style="list-style-type: none">1. Centrifuge at 5,000xg for 5min.2. Carefully open the tube and add 100ul of sterile water to dissolve the DNA.3. Close the tube and incubate for 10 minutes at room temperature.4. Briefly vortex the tube and then do a quick spin (less than 5000xg) to concentrate the liquid at the bottom.5. Store the suspended plasmid at -20°C. The DNA is stable for at least one year from date of shipping when stored at -20°C.
RefSeq:	NM_001108569.3 , NP_001102039.2
RefSeq Size:	2810 bp
RefSeq ORF:	1761 bp
Locus ID:	362050
Cytogenetics:	2q44
MW:	67 kDa