

Product datasheet for RR211368

Nfkbie (NM_199111) Rat Tagged ORF Clone

Product data:

Product Type:	Expression Plasmids
Product Name:	Nfkbie (NM_199111) Rat Tagged ORF Clone
Tag:	Myc-DDK
Symbol:	Nfkbie
Synonyms:	Slc35b2
Vector:	pCMV6-Entry (PS100001)
E. coli Selection:	Kanamycin (25 ug/mL)
Cell Selection:	Neomycin
ORF Nucleotide Sequence:	>RR211368 representing NM_199111 Red=Cloning site Blue=ORF Green=Tags(s)

TTTTGTAATACGACTCACTATAGGGCGCCGGAATTCGTCGACTGGATCCGGTACCGAGGAGATCTGCC
GCC**GCGATCGCC**

ATGTCCGGATGCGCGGAAGGGCCGGACGAGGGCGGACGACAGCCAGTGGCATTCCGGCATAGAGTCGCTGC
GCTCTCTGCGCTCCCTGCCGACCCTGCTGCGGCCAGTCTCTGGATCATCGCACAGCGCTGCCACA
GCCTTGGAGCCATGCTCCGAAGACGGACAAGGAACCAGAGGGGAAGGATGCGGATGGAGAGCGAGCG
GACTCCACCTATGCCTCCTCCTCTCACAGAGCTTTGCCCTTGGTGGAGAGACCCGAGGCCAAGGATC
CAAACCTCCACCCCAAGCTCGCCGGTGTCCCGCGGGGGTGTGAGCCCTCAGCAACTCGAAGCGCT
CACGTACATCTCTGAAGATGGAGACAGCGTGTCCACCTGGCAGTAATCCATGAAGCCCCATCGGTACTA
TTCTGTTGCTTGGCTTTCCTGCCCCAGGAAGTCTGGATATTCAGAACAACCTTTACCAGACAGCGCTGC
ATCTGGCCGTTTCTGATCAGCCAGATGTAGCTCGGGCCCTGGTGTGAAGGGAGCCAGCCGAATACT
GCAGGACCAACACGGCGACACAGCCCTGCATGTAGCCTGTCAGCGCCAGAATCTGGCCTGTGCGTGTGC
CTGCTGGAGGAGCAGCCAGAGCCGGGCAGACAGCCATCTATCCCCTGGACCTCCAAGTGAAGAACCAG
AAGGTCTGGCCTGTCTCCACATCGCCACATTGCAGAGGAACCACTCATAGAAGTGTGCTTTCAGAA
TGGAGCCGACATCGATGCACAGGAGGGCACCAAGTGGAAAGACTGCCTGCACCTGGTGTGGAAACCCAG
GAGCGCAGCCTGGTGCAGTTCCTGCTCCAGGCTGGTGGCCGAGTAGATGCCCGCATGCTGAATGGGTGTA
CACCTTTCACCTGGCAGCTGGCCGGGGCTCAACAGCATCTCGTCCACTCTGTGTGAGGCCGGTGCCGA
CTCACTGCTGTGAACGTGGAAGATGAGACACCCAGGACCTGGCCGAGGATCTCCTTTCTACTTGCC
TTCGATGACCTGAAAATCTCCGGGAAGCCACTGCTATGTACTGAC

ACGCGTACGCGGCCGCTCGAGCAGAACTCATCTCAGAAGAGGATCTGGCAGCAATGATATCCTGGATT
ACAAGGATGACGACGATAAGGTTTAA



[View online »](#)

Protein Sequence: >RR211368 representing NM_199111
 Red=Cloning site Green=Tags(s)

MSDARKGPDEADDSQCDSGIESLRSLRSLPDPAAAPVSGSSHSGCPQWHPKTDKEPEGKEDADGERA
 DSTYASSSLTESLPLLERPEAKDPNPPTSSPVSPAGVLSPOQLEALTYISEDGDTLLHLAVIHEAPSVL
 FCCLAFLLPQEVLDIQNNLYQTALHLAVHLDQPDVVRALVLKASRILQDQHGDTALHVACQRQNLACACC
 LLEEQPEPGRQPSHPLDLQLKNWQGLACLHIATLQRNQPLIELLLQNGADIDAQEGTSGKTALHLAVETQ
 ERSLVQFLLQAGARVDARMLNGCTPLHLAAGRGLNSISSTLCEAGADSLLLNVEDETPQDLAEDLLSYLP
 FDDLKISGKPLLCTD

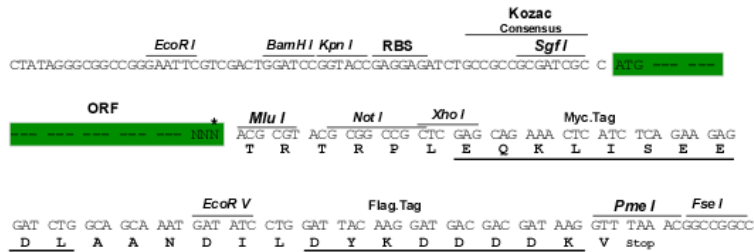
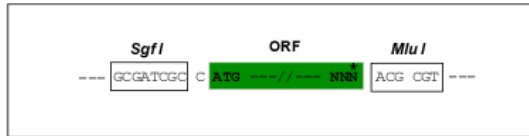
TRTRPLEQKLISEEDLAANDILDYKDDDDKV

Restriction Sites:

Sgfl-MluI

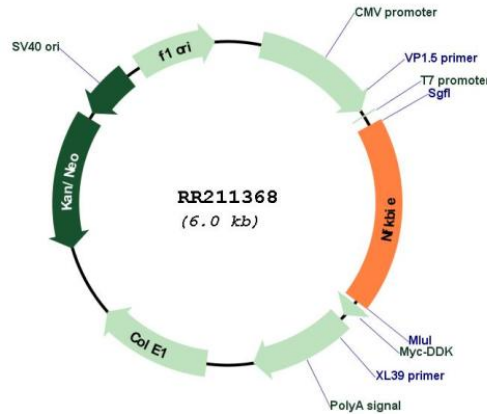
Cloning Scheme:

Cloning sites used for ORF Shutting:



* The last codon before the Stop codon of the ORF

Plasmid Map:



ACCN:

NM_199111

ORF Size:	1095 bp
OTI Disclaimer:	The molecular sequence of this clone aligns with the gene accession number as a point of reference only. However, individual transcript sequences of the same gene can differ through naturally occurring variations (e.g. polymorphisms), each with its own valid existence. This clone is substantially in agreement with the reference, but a complete review of all prevailing variants is recommended prior to use. More info
OTI Annotation:	This clone was engineered to express the complete ORF with an expression tag. Expression varies depending on the nature of the gene.
Components:	The ORF clone is ion-exchange column purified and shipped in a 2D barcoded Matrix tube containing 10ug of transfection-ready, dried plasmid DNA (reconstitute with 100 ul of water).
Reconstitution Method:	<ol style="list-style-type: none">1. Centrifuge at 5,000xg for 5min.2. Carefully open the tube and add 100ul of sterile water to dissolve the DNA.3. Close the tube and incubate for 10 minutes at room temperature.4. Briefly vortex the tube and then do a quick spin (less than 5000xg) to concentrate the liquid at the bottom.5. Store the suspended plasmid at -20°C. The DNA is stable for at least one year from date of shipping when stored at -20°C.
RefSeq:	NM_199111.1 , NP_954542.1
RefSeq Size:	1669 bp
RefSeq ORF:	1098 bp
Locus ID:	316241
Cytogenetics:	9q12
MW:	39.1 kDa
Gene Summary:	human homolog is a 3'-phosphoadenosine 5'-phosphosulfate transporter found in the Golgi membrane [RGD, Feb 2006]