

Product datasheet for **RR211332**

Wnt10a (NM_001108227) Rat Tagged ORF Clone

Product data:

Product Type:	Expression Plasmids
Product Name:	Wnt10a (NM_001108227) Rat Tagged ORF Clone
Tag:	Myc-DDK
Symbol:	Wnt10a
Mammalian Cell Selection:	Neomycin
Vector:	pCMV6-Entry (PS100001)
E. coli Selection:	Kanamycin (25 ug/mL)
ORF Nucleotide Sequence:	>RR211332 representing NM_001108227 Red=Cloning site Blue=ORF Green=Tags(s)

TTTTGTAATACGACTCACTATAGGGCGGCCGGGAATTCGTCGACTGGATCCGGTACCGAGGAGATCTGCC
GCC**CGATCGCC**

ATGGGCAGCGCCACCCTCGCCCTGGCTGCGGCTCCCACCAGGGCCCCAGCCGCGGCTGAGCTCTGGG
CGCTCCTGTTCTTCTACTGCTGCTGGCTGCTGTGCCAGGTCAGCACCCAACGACATCCTGGGCT
CCGCTACCCAGAGCCTGTGCTCAACGCCAACACAGTGTGCCTGACATTGCCCGGCTGAGCCGGCGG
CAGATGGAGGTGTGTGCGTCACCTGACGTGGCCGCTCTGCTATCCAGGGCATCCAGATCGCCATCC
ATGAGTCCAGCATCAGTTCGGGACCAGCGCTGGAAGTGTCCAGCCTGGAGACTCGGAACAAAGTCCC
CTACGAGGCCCATCTTCAGCAGAGGTTTTCGAGAGAGTGCTTTGCGCTACGCCATAGCAGCTGCCGGG
GTGGTGACGCAGTGTCCAACGCGTGCGCCCTGGGTAAGTGAAGGCTTGCAGTTCGATGCCTCCAGGC
GTGGGACGAAGAGGCTTTGTCGGAAGCTGCACCGCTTGCAGCTGGACGCCCTACAGCGCGAAAGGG
CTTGAGCCACGGGTCCCGGAGCACCTGCCATACCCCTGCCAGCCAGGCTGCAGGACTCCTGGGAG
TGGGGTGGCTGCAGTCCGGATGTGGCTTTGGAGAACGCTTCTCCAAGGACTTTCTGGACTCCGAGAGC
CTCACAGAGACATCCACGCACGCATGAGACTCCACAACAACCGTGTGGGCAGGCAGGCGGTGATGGAGAA
CATGCGCGAAAGTGCAAGTGCCACGGCACCTCAGGCAGCTGCCAGCTCAAGACCTGCTGGCAGGTGACG
CCGGAGTTCGCACAGTGGGGCGCTGCTGCGCAACCGCTTCCACCGCCACGCTCATCCGGCCGACA
ACCGCAACGGTGGCCAGTTGGAGCCCGGCTCGCGGGAGCACCTCGCCAGCACCGGACTCCAGGGCT
GCGCCGTAGGGCCAGTCACTCCGACCTGGTCTACTTTGAGAAATCGCCGACTTCTGTGAGCGCGAGCCT
CGTCTGGACTCGGCAGGCACTGTGGGGCGCTGTGCAATAAGAGCAGCACGGGTCCAGACAGCTGCGGCA
GCATGTGCTGTGGCCGCGGTCAACAATTTGCGCCAGACGCGCAGCGAGCGCTGCCACTGTCGTTTCCA
CTGGTGTGCTTCGTGGTCTGCGAAGAATGCCGCATCACTGAGTGGGTACGCGTCTGCAAGCTGGTGTG
CTTCGTGGTCTGCGAAGAATGCCGCATCACTGAGTGGGTACGCGTCTGCAAG

AGCGGACCGACGCGTACGCGCCGCTCGAGCAGAACTCATCTCAGAAGAGGATCTGGCAGCAAATGATATCC
TGGATTACAAGGATGACGACGATAAGGTTTAA



[View online »](#)

Protein Sequence: >RR211332 representing NM_001108227
Red=Cloning site Green=Tags(s)

MGSAHPRPWRLPPGQPRPELWALLFFLLLLAAAVPRSAPNDILGLRLPPEPVLNANTVCLTLPGLSRR
 QMEVCVRHPDVAASAIQGIQIAIHECQHFRDQRWNCSSLETRNKVPYESPIFSRGFRESAFAYAIAAAG
 VVHAVSNACALGKLKACGCDASRRGDEEAFRRKHLHRLQLDALQRGKGLSHGVPEHPAIPASPGLQDSWE
 WGGCSPDVGFGERFSKDFLDSREPHRDIHARMRLHNNRVGRQAVMENMRRKCKCHGTSGSCQLKTCWQVT
 PEFRTVGLLRNRFHRATLIRPHNRNGQLEPGLAGAPSPAPGTPGLRRRASHSDLVYFEKSPDFCEREP
 RLDSAGTVGRLCNKSSSTGPDSCGSMCCGRGHNILRQTRSERCHCRFHWCFFVCEECRITWVSVCKLVL
 LRGLRRMPHH*VGQRLQ

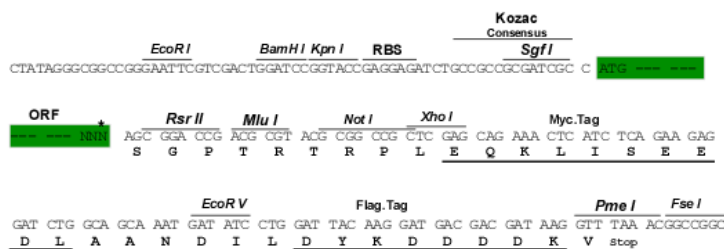
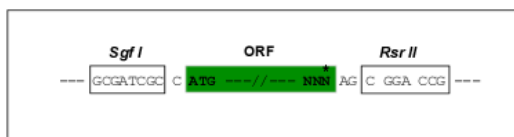
SGPTRTRPLEQKLI SEEDLAANDILDYKDDDDKV

Chromatograms: https://cdn.origene.com/chromatograms/ja1484_f06.zip

Restriction Sites: SgfI-RsrII

Cloning Scheme:

Cloning sites used for ORF Shuttling:



* The last codon before the Stop codon of the ORF

ACCN: NM_001108227

ORF Size: 1251 bp

OTI Disclaimer: The molecular sequence of this clone aligns with the gene accession number as a point of reference only. However, individual transcript sequences of the same gene can differ through naturally occurring variations (e.g. polymorphisms), each with its own valid existence. This clone is substantially in agreement with the reference, but a complete review of all prevailing variants is recommended prior to use. [More info](#)

OTI Annotation: This clone was engineered to express the complete ORF with an expression tag. Expression varies depending on the nature of the gene.

Components: The ORF clone is ion-exchange column purified and shipped in a 2D barcoded Matrix tube containing 10ug of transfection-ready, dried plasmid DNA (reconstitute with 100 ul of water).

- Reconstitution Method:**
1. Centrifuge at 5,000xg for 5min.
 2. Carefully open the tube and add 100ul of sterile water to dissolve the DNA.
 3. Close the tube and incubate for 10 minutes at room temperature.
 4. Briefly vortex the tube and then do a quick spin (less than 5000xg) to concentrate the liquid at the bottom.
 5. Store the suspended plasmid at -20°C. The DNA is stable for at least one year from date of shipping when stored at -20°C.

RefSeq Size: 2466 bp

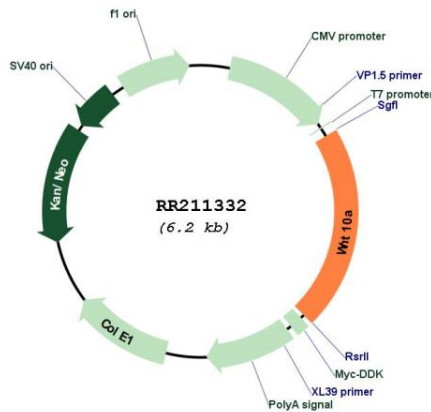
RefSeq ORF: 1254 bp

Locus ID: 316527

Cytogenetics: 9q33

MW: 46.4 kDa

Product images:



Circular map for RR211332