

## Product datasheet for **RR211306**

### **Copb1 (NM\_080781) Rat Tagged ORF Clone**

#### **Product data:**

Product Type:	Expression Plasmids
Product Name:	Copb1 (NM_080781) Rat Tagged ORF Clone
Tag:	Myc-DDK
Symbol:	Copb1
Synonyms:	Rack2
Vector:	pCMV6-Entry (PS100001)
E. coli Selection:	Kanamycin (25 ug/mL)
Cell Selection:	Neomycin



[View online »](#)

ORF Nucleotide  
Sequence:

>RR211306 representing NM\_080781  
 Red=Cloning site Blue=ORF Green=Tags(s)

TTTTGTAATACGACTCACTATAGGGCGGCCGGGAATTCGTCGACTGGATCCGGTACCGAGGAGATCTGCC  
 GCC**CGCATCGCC**

ATGACCGCAGCTGAGAACGTGTGCTATACGTTAATTAACGTGCCAATGGACTCAGAACCCCTTCTGAAA  
 TCAGCTTAAAAAATGACCTGGAGAAAGGCGATGTGAAGTCAAAGACTGAAGCTTTGAAGAAAGTGATCAT  
 TATGATTCTGAATGGGAAAAGCTTCTGGACTCCTGATGACGATCATTCTGTTTCGTGCTGCCTCTTCAG  
 GATCACACCATCAAAAAGTTGCTTCTGGTCTTCTGGGAAATTGTTCCGAAAACAACTCCAGATGGGAGGC  
 TCTTACATGAAATGATTCTGTGTGTGATGCATACAGAAAGGATCTCCAGCATCCTAATGAGTTTATTTCG  
 TGGATCTACTCTTCGTTTCTTTGCAAATTGAAGGAAGCAGAATTGCTGGAACTCTGATGCCTGCTATC  
 CGTGCTTGTGGAACATCGTCACAGCTATGTTAGGAGAAACGCTGTTTTGGCCATCTACACCATCTACA  
 GAAATTTTAAAACTTATACCTGATGCTCCTGAGCTGATACATGATTTTCTGGTAAACGAGAAGGATGC  
 AAGCTGCAAAAGAAATGCATTTATGATGCTCATTGATGACGATCAGGATCGAGCTTTGGATTATTTAAGT  
 ACATGTATTGATCAAGTTCAGACATTTGGAGACATTCTACAGTTGGTTATTGTTGAACTAATTTATAAGG  
 TCTGTCATGCTAATCCATCAGAGAGGGCCCGTTTCATTGCTGTATCTATAACTTACTGCAGTCACTAG  
 TCCTGCTGTAATAACGAAGCTGCTGGGACACTGGTGACACTGTCAAGTCTCCAAGTCAATAAAGGCT  
 GCTGCTCAGTGTACATTGATTTAATTATAAGGAAAGTGATAACAATGTAAGCTCATTGCTCCTGGACC  
 GATTGGTAGAACTAAAAGAGCATCTGCTCACGAGCGAGTCTCCAAGATCTGGTCATGGACATCCTACG  
 AGTACTGAGTACACCAGACCTAGAAGTGCAGAAACGCTGCAGTTAGCACTGGATCTTGTCTCATCT  
 AGGAATGTTGAAGAGTTGGTTATTGTCTGAAGAAGGAAGTAATTAACAATAAACGTGTCTGAGCATG  
 AAGCACTGACAAATACCGACAGCTTCTCGTGCAGAACACTGCATTCCTGCTGTCCGATTTCCAGATAT  
 GGCTGCAAAATGTTATTCCTGTGCTAATGGAATTTCTCAGTGACAGTAATGAAGCAGCAGCTGCTGATGTC  
 TTGGAGTTTGTGCGTGAAGCCATTCAGCGCTTTGACAACCTGAGAATGCTGATTGTTGAGAAGATGCTGG  
 AAGTCTTCCATGCTATTAAGTCTGTCAAGATTTATCGAGGAGCACTGTGGATCCTGGGCGAGTACTGCAG  
 TACTAAGGAAGACATTCAGAGTGTGATGACTGAAGTCCGCGAGTCCCTTGGGGAGATCCCAATCGTAGAA  
 TCAGAAATAAAGAAAGAGCTGGCGAGTTAAAACCAGAAGAAGAAATAACTGTTGGGCCCGTTCAGAAAT  
 TGGTTACAGAGATGGGCACCTATGCTACTCAGAGTGCCTCAGCAGCTCTAGACCTACCAAGAAAGAAGA  
 GGACAGACCACCCTTGAGAGGATTCCTCCTGGATGGAGATTTCTTTGTTGCTGCCTCCCTTGCCACAAC  
 CTGACCAAGATTGCATTACGCTATGTAGCATTGGTTTCCAGGAGAAGAAAAAGCAAACTCTTTTGTGCTG  
 AGGCTATGTTGCTTATGGCAACCATCCTTCATTTGGGAAAATCCTCTCTTCTTAAGAAGCCAATCACTGA  
 TGATGATGTAGACCGAATTTCCCTGTGCCTCAAGGTCTTATCTGAATGCTCACCTTAATGAATGACATT  
 TTTAATAAGGAGTGCAGACAGTCTCTTTCCCAATGTTGTCTGCCAACTCGAAGAAGAGAACTATCCC  
 AAAAGAAAGAACTGAAAAGAGGAATGTAAACAGTACAGCTGTGACCCATTTCTTTCATGCAACTAAC  
 TGCTAAGAATGAGATGAACTGCAAGGAGGATCAGTTCCAGCTGAGTTTGTGGCAGCGATGGGTAACACT  
 CAGAGGAAAGAGGCGAGCAGACCCCTGGCGTCCAACTCAACAAGGTCACTCAGTTGACAGGTTTCTCTG  
 ATCCAGTGTATGCAGAAGCTTATGTTTATGTCAATCAGTATGATATTGCTCCTGGATGTTCTTGTGTA  
 CCAAAACAGTGATACTTTGCAGAACTGCACATTAGAGTTAGCTACTCTAGGGGATCTGAAACTCGTGGAA  
 AAACCATCTCCTTTGACTCTTGCTCCTCATGACTTTGCGAATATTAAGCCAATGTCAAAGTAGCATCAA  
 CAGAAAATGGAATAATTTTCGGCAATATAGTTTATGATGTCTCTGGAGCAGCAAGTGACAGAAACTGTGT  
 GGTCTCAGTGACATCCACATTGACATCATGGACTATATCCAGCCTGCAACTTGCAGTGTGCTGAGTTC  
 CGTCAGATGTGGGCCGAATTTGAATGGGAAAATAAAGTGACAGTTAACACCAACGTGACTGACCTGAATG  
 ATTATTTACAGCACATCCTCAAGTCCACCAACATGAAGTGCCTGACTCCAGAGAAGGCCCTTTCTGGCTA  
 CTGTGGCTTCATGGCAGCAACCTATATGCTCGCTCTATTTGGAGAGGATGCAGTTGCAAAATGTCAGC  
 ATTGAGAAGCCAGTTCACCAGGGACCAGATGCTGCTGTTACTGGCCATATAAGAATTCGTGCAAAAAGTC  
 AGGGAATGGCCTTGAGCCTTGAGATAAAAATCAACCTGTCTCAAAGAAGACTAGTCTC

**ACGCGT**ACGCGGCCGCTCGAGCAGAAACTCATCTCAGAAGAGGATCTGGCAGCAAATGATATCCTGGATT  
 ACAAGGATGACGACGATAAGGTTTAA

**Protein Sequence:** >RR211306 representing NM\_080781  
 Red=Cloning site Green=Tags(s)

MTAAENVCYTLINVPMDSEPPSEISLKNLDLEKGDVKSKEALKKVIIMILNGEKLPGLLMTIIRFVLPLO  
 DHTIKKLLLWFWEIVPKTTPDGRLLEHMLVCDAYRKDLQHPNEFIRGSTLRFLCKLKEAELEPLMPAI  
 RACLEHRHSYVRRNAVLAIYTIYRNFENLIPDAPELIHDFLVNEKDASCKRNAFMMLIHADQDRALDYL  
 TCIDQVQTFGDILQLVIVELIYKVCANPSEARARFIRCIYNLLQSSSPAVKYEAAGTLVTLSSAPTAIKA  
 AAQCYIDLIIKESDNNVKLIVLDRLVELKEHPAHERVLQDLVMDILRVLSTPDLEVRKKTQLALDLVSS  
 RNVEELVIVLKKEVIKTNVSEHEDTDKYRQLLVRTLHSCSVRFPDMAANVIPVLMFLSDSNEAAAADV  
 LEFVREAIQRFDNLRMLIVEKMLEVFHAIKSVKIYRGALWILGEYCSTKEDIQSVMTEVRRSLGEIPIVE  
 SEIKKEAGELKPEEEITVGPVQKLVTEMGYATQSALSSSRPTKKEEDRPLRGFLLDGDFVVAASLATT  
 LTKIALRYVALVQEKKKQNSFVAEAMLLMATILHLGKSSLPKKPIITDDDVRISLCLKVLECSPLMNDI  
 FNKECRQSLSQMLSAKLEEEKLSQKKESEKRNVTVQDDPISFMQLTAKNEMNCKEDQFQLSLLAAMGNT  
 QRKEAADPLASKLNKVTQLTGFSDPVYAEAYVHVNOYDIVLDVLDVNVNQTSDTLQNLCTLELATLGDCLKVE  
 KPSPLTLAPHDFANIKANVKVASTENGIIFGNIVYDVSGAASDRNCVVLSDIHIIDIMDYIQPATCTDAEF  
 RQMWAEFEWENKVTVNTNVDLNDYLQHILKSTNMKCLTPEKALSGYCGFMAANLYARSIFGEDALANVS  
 IEKPVHQGPDAAVTGHIRIRAKSQGMALSLGDKINLSQKKTSL

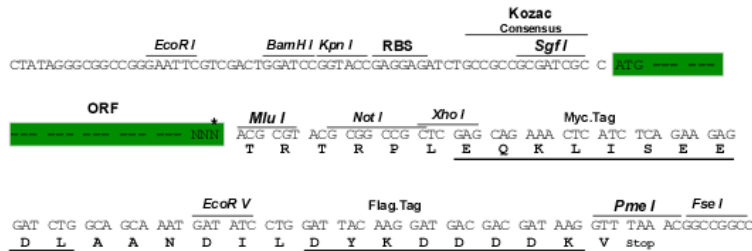
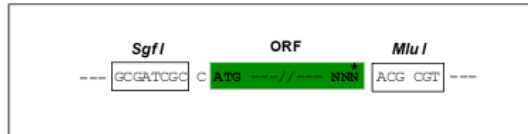
TRTRPLEQKLISEEDLAANDILDYKDDDDKV

**Restriction Sites:**

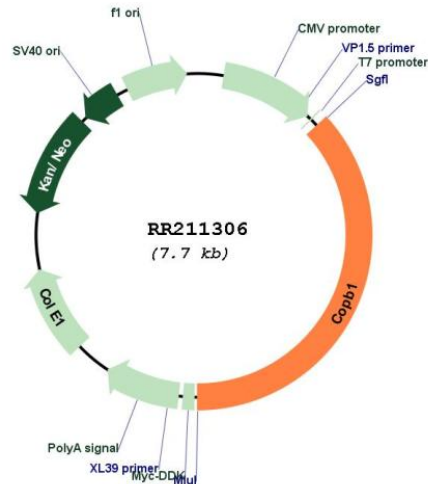
SgfI-MluI

**Cloning Scheme:**

Cloning sites used for ORF Shuttling:



\* The last codon before the Stop codon of the ORF

**Plasmid Map:**


**ACCN:** NM\_080781

**ORF Size:** 2859 bp

**OTI Disclaimer:** The molecular sequence of this clone aligns with the gene accession number as a point of reference only. However, individual transcript sequences of the same gene can differ through naturally occurring variations (e.g. polymorphisms), each with its own valid existence. This clone is substantially in agreement with the reference, but a complete review of all prevailing variants is recommended prior to use. [More info](#)

**OTI Annotation:** This clone was engineered to express the complete ORF with an expression tag. Expression varies depending on the nature of the gene.

**Components:** The ORF clone is ion-exchange column purified and shipped in a 2D barcoded Matrix tube containing 10ug of transfection-ready, dried plasmid DNA (reconstitute with 100 ul of water).

**Reconstitution Method:**

1. Centrifuge at 5,000xg for 5min.
2. Carefully open the tube and add 100ul of sterile water to dissolve the DNA.
3. Close the tube and incubate for 10 minutes at room temperature.
4. Briefly vortex the tube and then do a quick spin (less than 5000xg) to concentrate the liquid at the bottom.
5. Store the suspended plasmid at -20°C. The DNA is stable for at least one year from date of shipping when stored at -20°C.

**RefSeq:** [NM\\_080781.2](#), [NP\\_542959.1](#)

**RefSeq Size:** 3348 bp

**RefSeq ORF:** 2862 bp

**Locus ID:** 114023

**UniProt ID:** [P23514](#)

**Cytogenetics:** 1q34

**MW:** 107 kDa

**Gene Summary:** transmembrane protein associated with the Golgi; may be a component of non-clathrin coated vesicles and cisternae of the Golgi complex [RGD, Feb 2006]