

Product datasheet for **RR211299**

Krt84 (NM_001008812) Rat Tagged ORF Clone

Product data:

Product Type:	Expression Plasmids
Product Name:	Krt84 (NM_001008812) Rat Tagged ORF Clone
Tag:	Myc-DDK
Symbol:	Krt84
Synonyms:	Kb24
Vector:	pCMV6-Entry (PS100001)
E. coli Selection:	Kanamycin (25 ug/mL)
Cell Selection:	Neomycin



[View online »](#)

ORF Nucleotide Sequence:

>RR211299 representing NM_001008812
 Red=Cloning site Blue=ORF Green=Tags(s)

TTTTGTAATACGACTCACTATAGGGCGGCCGGAATTCGTCGACTGGATCCGGTACCGAGGAGATCTGCC
 GCC**CGCATCGCC**

ATGTCCTTGCCCTCTACAGAGTCAGCTCTGGCCGTCGAGTGGGAACTTCAGTTCCTGCTCAGCAATGA
 CCCCTCAGCATCTGAACCGCTTCCGGGCAAGCTCTGTCTCCTGCAGGAGTGGACCTGGCTTCCGGGGCTT
 GGGTGGTTTTGGTAGTCGGAGCGTCATCAACTTTGGATCATCCTCACCCCGGATAGCAGTCGGATGCTCT
 CGTCCTATCCGCTATGGAGTTGGCTTTGGAGCTGGCAATGGGATAGCCTTTGGCTCTGGTACGGAAGTG
 GCATTTGTCTGGGCTATAGGGCCGGCAGTGGCGTTGGCTTGGGTTTTGGTCTGGCAGTTGCCTTGGTTA
 TGGTTTTGGAGGCCCTGGTTTTGGTGGCCCTGGCTTTGGTGGCCCTGGCTTTGGCTACAGAATTGGAGGA
 ATCGGAGGCCCTCAGCCCTGTATCACAGCTGTGACTGTTAACAGAGCCTGTGACACCCCTCAACC
 TGGAGATTGACCCCAATGCCAGAGGGTGAAGAAAGATGAGAAGGAACAGATCAAGACCCCAACAACAA
 ATTCGCCTCCTCATTGATAAGGTGAGGTTTCTGGAGCAACAGAAATAAATCCTAGAGACCAAGTGGAGC
 TTCTCCAAGACCAGAAATGTGCCCGTAGCAACCTGGAGCCTCTCTTCGATAACTATATACCAGCCTGC
 GGAGGCAGCTGGATGACTAGTCAGCGACCAGGCTCGGCTGCAGGCAGAGAGGAACCACATGCAGGCAT
 CCTTGAGGGCTTCAAGAAGAAGTATGAAGAAGAGTGGTGTTCGGGCTAATGCGGAGAACGAGTTTGTA
 GCGCTGAAGAAGGATGTAGACGCAGCTTTCCTGAACAAATCTGACCTGGAAGCCAACGTGGATGCTCTGG
 CCCAGGAAATGAATTCCTCAAGGCTCTGTACCTGGAGGAAATCCAGTTGCTGCAGTCACACATCTCAGA
 GACATCTGTCAATTGTGAAGATGGACAACAGCCGGACCTGAACCTGGATGGGATCATAGCGGAAGTCAAG
 GCACAGTATGAGGAGGTAGCAAGCGGAGTCGTGCAGATGTGGAGTCTGGTACCAGACCAAGTATGAGG
 AGATGCGGGTGACCGCTGGCCAGCACTCGCAACTACGTAATACACGGGACGAGATCAATGAGCTGAC
 CCGGCTGATCCAGAGGCTGAAAACCTGAGATCGAGCACACCAAGGCTCAGTGTGCCAAGCTGGAGCCGCC
 GTGGCTGAGGCAGAGCAGCAGGGTGAAGCCGCCCTCAACGATGCCAAGTGTAAACTGACTGATCTGGAGG
 GAGCCCTGCAGCAGGCCAAGCAGGACATGGCCAGGCAGCTGCGGGAGTACCAGGAGCTCATGAATGCCAA
 GCTGGCGCTGGACATTGAGATTGTACCTACAGGAAGCTGCTGGAGGGCAGGAAATCAGGATCTGTGAA
 GGTGTTGGGCCAGTAAACATATGTAAGTATCTCCCTTTCTCAGACCGTTTCTCTCTCCCATCAAAAT
 TTCCTTTTGGCACTTGTGGGGATCAAGAAGCTCCCAAGATAGCTGATCTGGCCAAGACGTACAGTCATGG
 ACGCAGGGCCATCAGTGTCCAAGACTGTGTCTCAGCAGAGGCTCCCAAGCAAAAGAG

ACGCGTACGCGGCCGCTCGAGCAGAAACTCATCTCAGAAGAGGATCTGGCAGCAAATGATATCCTGGATT
 ACAAGGATGACGACGATAAGGTTTAA

Protein Sequence:

>RR211299 representing NM_001008812
 Red=Cloning site Green=Tags(s)

MSCRSYRVSSGRRVGNFSSCSAMTPQHLNRFRASSVSCRSGPGRGLGGFGSRSVINFGSSSPRIAVGCS
 RPIRYGVGFGAGNGIAFGSDGSGICLGYRAGSGVGLGFGAGSCLGYGFGGPGFGGPGFGYRIGG
 IGGPSAPAITAVTVNQSLTLPNLLEIDPNAQRVKKDEKEQIKTLNKFASFIDKVRFLEQQNKLLETKWS
 FLQDQKCARSNLEPLFDNYITSLRRQLDVLVSDQARLQAERNHMQDILEGFKKKYEEEVFRANAENEFV
 ALKKDVDAAFLNKSDLEANVDALAQEIEFLKALYLEEIQLLQSHISETSVIVKMDNSRDNLNLDGIIAEVK
 AQYEEVARRSRADVESWYQTKYEEMRVTAGQHCDNLRNTRDEINELTRLIQRLKTEIEHTKAQCAKLEAA
 VAEAEQQGEAALNDAKCKLTDLEGALQQAQDMARQLREYQELMNAKLALDIEIVTYRKLLEGEEIRICE
 VGVPVNIKYLPLSQTVSSLPIKFPFGTCGDQEAPKIADLAKTYSHGRRRAISVPRLCVLSRGSQNKE

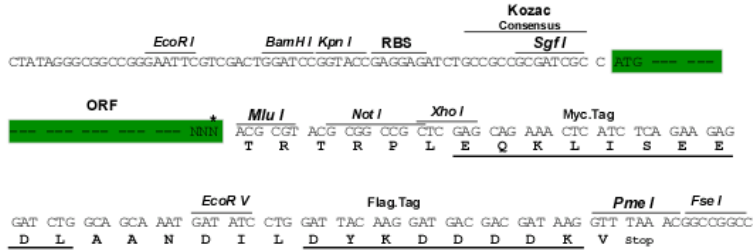
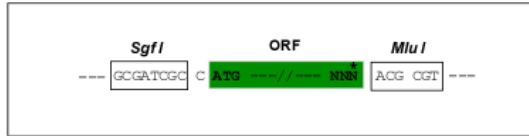
TRTRPLEQKLISEEDLAANDILDYKDDDDKV

Restriction Sites:

Sgfl-MluI

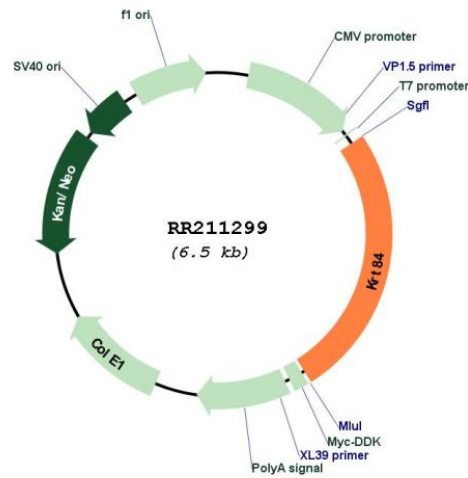
Cloning Scheme:

Cloning sites used for ORF Shutting:



* The last codon before the Stop codon of the ORF

Plasmid Map:



ACCN:	NM_001008812
ORF Size:	1671 bp
OTI Disclaimer:	The molecular sequence of this clone aligns with the gene accession number as a point of reference only. However, individual transcript sequences of the same gene can differ through naturally occurring variations (e.g. polymorphisms), each with its own valid existence. This clone is substantially in agreement with the reference, but a complete review of all prevailing variants is recommended prior to use. More info
OTI Annotation:	This clone was engineered to express the complete ORF with an expression tag. Expression varies depending on the nature of the gene.
Components:	The ORF clone is ion-exchange column purified and shipped in a 2D barcoded Matrix tube containing 10ug of transfection-ready, dried plasmid DNA (reconstitute with 100 ul of water).
Reconstitution Method:	<ol style="list-style-type: none">1. Centrifuge at 5,000xg for 5min.2. Carefully open the tube and add 100ul of sterile water to dissolve the DNA.3. Close the tube and incubate for 10 minutes at room temperature.4. Briefly vortex the tube and then do a quick spin (less than 5000xg) to concentrate the liquid at the bottom.5. Store the suspended plasmid at -20°C. The DNA is stable for at least one year from date of shipping when stored at -20°C.
RefSeq:	NM_001008812.1 , NP_001008812.1
RefSeq Size:	1674 bp
RefSeq ORF:	1674 bp
Locus ID:	315320
Cytogenetics:	7q36
MW:	61.2 kDa