

Product datasheet for RR211191

Phlpp2 (NM_001109131) Rat Tagged ORF Clone

Product data:

Product Type: Expression Plasmids
Product Name: Phlpp2 (NM_001109131) Rat Tagged ORF Clone
Tag: Myc-DDK
Symbol: Phlpp2
Synonyms: Phlpp1; RGD1562857
Vector: pCMV6-Entry (PS100001)
E. coli Selection: Kanamycin (25 ug/mL)
Cell Selection: Neomycin
ORF Nucleotide Sequence: >RR211191 representing NM_001109131
 Red=Cloning site Blue=ORF Green=Tags(s)

TTTTGTAATACGACTCACTATAGGGCGGCCGGAATTCGTCGACTGGATCCGGTACCGAGGAGATCTGCC
 GCC**CGGATCGCC**

ATGGGGGAGGTGGAGCCCGTGCCCGGGGCTCGCTGGAGCCCCGGAGCCACCTGAAGCGGCGGCGCCTC
 GCCGGCCCGGAGGTATTCGGGTCTAAAGAGGAATATGAAACACAATGGGAGCAGAAATTGTTTGAATAG
 AAGAAGTAGGTTTGGCTCTCGAGAAAGAGACTGGCTAAGAGAAGATGTGAAGAGAGGCTGTGTTACCTT
 TATGGAGCGGACAGCACCCTGCCACTACAACCACCACCTCCTCCTCCTCCTCCTCCTCCTCCTCCTCCT
 CCTCTGATTTACATCTTGTCTTTGCACAGTGGAGACACCAGCGTCAGAAATATGTGCTGGAGAGGGAAG
 AGAAAGTCTCTATCTACAGCTTCATGGAGATCTGGTCAGGAGACTGGAGCCCACTGAACGGCCTCTCCAG
 ATTGTTTACGACTACTTATCCAGGCTGGGGTTTGAAGATCCCCTGCGCATACAGGAGGAGGCTACGAACC
 CTGATCTCAGCTGTATGATTTCGATTTTATGGTGAAGGCCATGCCAGATGGATCATCTGGACCGAATCCT
 GCTGTCTGGCATCTATAACGTCCGCAAAGGGAAGACCCAGCTGCACAAATGGGCTGAGCGCCTCGTTGTT
 CTCTGTGGCACCTGCCTTATTGTCTCCTCAGTGAAGGATTGCCAACTGGAAAGATGCACATCTTGCCAC
 TGGTTGGGGAAAGATAGAAGAAGTGAAGCGCCGCAACACTCCCTTGCTTTTCAGCTCAGCTGGAGCCCA
 AGCTCAGACCTATCATGTCAGCTTCGAGACTTTGGCTGAGTACCAGAGATGGCAGCGGCAGGCTCTAAG
 GTGGTGTCCAGAGGATCAGCACCGTGGACCTCTCGTGTTACAGCCTTGAGGAGGTTCTGAGCATCTCT
 TCTACAGTCAAGACATCACCTACCTCAACCTGCGACACAACCTTCATGCAGTTAGAAAAGACCAGGGGCCCT
 TGACACACTCTACAAATTTCTCAACTGAAGGGCCTGAACTTGTCCATAATAAGCTTGGACTGTTTCTCT
 GTGTTGCTGTGTGAGATTTCTACCCTGACTGAACTCAACCTTTCTGTAATGGATTTTCATGACTTGCCAA
 GTCAGATTGGTAATCTGTAAATCTTCAGACCCTCTGCCTTGATGGCAATGTTCTCACAGCTCTACCAGA
 TGAATGGGAAACCTGCAGCAGCTTACTTCTCTGGGAATTTCTCAACAATTTTAGTCAAATTCCTGAA
 GTTTTGGAGAACTCACCATGTTAGATAAAGTGGTTATGGCAGGAAACCGTTTGGAAATCCTGAACCTAG
 GGGTGTGACCAGGATGAACCATGTTAAGCATGTGGATCTAAGGATGAACCACTTGAAAACGGTGATTAT
 TGAAAATCTGGAGGAAATAAACACATCACTCACATGGATTTGCGGGACAATCAGTTGACTGATTTGGAC
 CTTAGCTCCTTATGTAGCTTGGAGCAGCTGCATTTGTGAGCGGAACCAAGTTGAGAGAGCTGACACTCAGTG



GCTTCTCCCTTCGAAACCTCTACGCCAATTGGAACAAGCTGACAGCAGTGAATGTCTATCCAGTACCAAG
CCTGCTCACTTCTTTGGAACCTCTCCGAAACTTCTGCTAGAATGTATCCCTGACTGGCCTGTGAAGCAAAA
AAGCTAGAAAATACTAGATATAAGCTACAATCTGCTTACAGAGGTTCCCATGAGAAATTCTGAGTAGTCTGA
GTCTTCGAAACTGATGGTAGGACACAACCACATCCATGTCTTCCGGCACTGGTGGAGCACATCCCCT
CGAGGTAAGTGTCCAGCATAAACTCTGTCCAGGCTGCCGGACACTGTTCTCCAAGGCCTAAAT
CTCAGGTAAGTGCATCCGCAATAGTCTGGAGTCTTTCCTTCTGCGTGTGCTGGAGAGGAGAGTC
TGAGTGTGCTGCAGTGTCTGACCTGACCAACAACCTTCTGACAGACCAGTGCATACCTGTTTTGGTCGG
GCACCCACACCTGCGTGTCTGACACCTTGCAAACAACCAGCTACAGACCTTCTGCAAGCAAACTAAAC
AAATTGGAGCAACTGGAAGAAGTGAATCTAAGTGGGAACAAGCTTAAAGCTATCCCAACAACCATAGCAA
ACTGCAAAAGACTGCACACCTTGTGCGACATGCCAACACATCAGCATTTTCCAGAGATCCTGCAGCT
GCCTCAGATTCAGTTTGTGACCTGAGTTGCAATGATTTGACAGAAATACTAATTCCAGAGACTCTGCCT
GCCACTTACAAGACCTTGATCTTACAGGAAATACAAATCTGTTCTGGAACACAAGACTTTGGACATGT
TTAGCCATATCACAACACTGAAATTGATCAGAAACCTTACCGACCACAGATTCTACAGTTACATCAAC
CTTCTGGAGCCATGGACTGGCCGAGATGGCTGGGCAGAGGAATAAACTCTGTGTGTCTGCTGGCTATG
GATAACTTTGAGAGGGCTGGGGCTGTGTACGGCATGTTTGTGGGGACAGGAATGAGGAACTCCCC
GTCTGCTGCAGTGTACAATGGCAGACGTCTTTTGGAAAGAGGTACAGCACTCAACAAGTGACACCGTTTT
CATGGCCAATACCTTCTGGTGTCTCACAGGAAATTAGGAATGGCTGGCCAGAAGCTAGGTTCTCTGCT
CTCCTGTGCTATATTCGACCTGACACTGCCGACCAACAAGTAGTTTTAGCTTACTGTAGCCAATGTTG
GCACGTGCCAAGCTGTCTGTGCCGAGGTGAAAGCCAGTACCTCTTCTAAAGTCTTCACTTGGAGCA
TGACCCAGAGGAGGCACAGAGGGTGAAGGACCAGAAAGCTATCATAACAGAGGACAACAAGGTGAATGGG
GTTACCTGCTGCACCCGGATGCTGGGATGTACATACCTTACCCCTGGATCCTCCCAAGCCTCACATAT
CCTCCACTCCGCTTACCATTCAAGATGAATTGCTGATTTTGGAAACAAGCACTGTGGAACTTGTCTGTC
CTATCTAGAAGCTGTCAAGTCCGTCATGTGCAAGACCCATTAGCTGCTGCTAAGAAGCTGTGCACA
TTAGCACAGAGCTATGGTTGTGACGACAATGTGGGGCAATGGTGGTTTATTTGAACATTGGTGAAGAAG
GCTGTACCTGTGAAATGCATGGGCTTGCCTTCCAGGCCCTGTGGGATTTGCTTCAACAGCAACCATCAA
GGATGCCCAAGCAACCACTCCCTCCTTAGCAGTGGGATTGCCTCAGAGCTGAGCAGTGAAGTGTGCG
ACCTCAGAGGTGAGCAGTGAAGTGGGTTCCACAGCGTCTGACGAACACAACACTGTGGCCTGGAGACGA
GCTTGTCTCCAGGCCTGAGAGGCGCTGTAGTCTGACCCCTGTGCCCTCTGCAGGCACTTCCAGCGCCA
GCCTTCTGTGCTACCTTTCCAGCAATCAGTCTGACAATGGACTGGACAGTGAAGTGAAGCAGCCTGTT
GAAGGCGTCATAACCAATGGCAGCAGGGTTGAGGTAGAGGTAGACATTCTGCTGCCGAGGAGAGAGT
CTGAGAAGTCCCCTACTCTCCGAAGAATTCTTCTACCCTGTTTCCAGAGGAACATGCTAGGGGGTTGGG
TTTTGGGATCCGAAGACAGAACAGTGTGAATAGTGGTATCTTCTGCCAGTGAACAAGACAAGATGGAG
TTACAGAAGTCTCCCTCACTTCTTGTGATGGAAAGAACTCTCAATGGCTCCATTGTGCCCTAG
AAGACAGCCTGAACCTCATTGAGGTGGCCACAGAAGCACCAAGAGGAAAAGTGGCTATTTTGTGCCCC
CACTCAGCTGGAACAGAGGATCAATTTGTGTCCCCCGTACCTGGAAGACGAAGTGAAGGAGCAATG
AAGCAGCACCAGGAGAGCAGGCCTGAGCCTGAACCCAGGGAAGAGGACCGGACAGAGCCCTGCAGGAGT
TTGATACAGCACTG

ACGCGTACGCGGCCGCTCGAGCAGAACTCATCTCAGAAGAGGATCTGGCAGCAATGATATCCTGGATT
ACAAGGATGACGACGATAAGGTTTAA

Protein Sequence:

>RR211191 representing NM_001109131
 Red=Cloning site Green=Tags(s)

MGEVEVPVAGSLEPPPEPEAAAPRRPGGIRVLKRNMKHNGSRNCLNRRSRFGSRERDWRREDVKGRCVYL
 YGADTTTATTTTTSSSSSSSSSSSDHLHLVLCVETPASEICAGEGRESLYLQLHGDLVRRLEPTERPLQ
 IVYDYL SRLGFEDPVRIQEEATNPDLSCMIRFYGEKPCQMDHLDRILLSGIYNVRKGGKTLHKWAERLVV
 LCGTCLIVSSVKDCQTGKMHILPLVGGKIEEVKRRQHSLAFSSAGAQAQTYHVFSFETLAEYQRWQRQASK
 VVSQRISTVDLSCYSLEEVPEHLFYSQDITYLNLRHNFMLERPGLDLYKFSQLKGLNLSHNKLGLFP
 VLLCEISTLTELNLSCNGFHDLP SQIGNLLNLQTLCLDGNVLTALPDELGNLQQLTSLGISFNNFSQIPE
 VLEKLTMLDKVVMAGNRLEILNLGVLTRMNHVKHVDLRMNLKTVIENLEGNKHITHMDLRDNQLTDLD
 LSSLCSLEQLHCERNQLRELTLSGFLRNLYANWNKLTAVNVYPVPSLLTSELSRNLLCEIPDWACEAK
 KLEILDISYNLLTEVPMRILSSLSRKL MVGNHIVL PALVEHIPLEVL DVQHNTLSRLPDTLFSKALN
 LRYLNASANSLESLSACAGEESLSVLQLLYL TNNLLTDQCI PVLVGHPHLRVLHLANNQLQTFPASKLN
 KLEQLEELNLSGNKLKAIPTTIANCKRLHTLVAHANNISIFPEILQLPQIQFVDLSCNDL TEILIPETLP
 ATLDLDTGNTNLVLEHKTDMF SHITTLKIDQKPLPTDSTVTSTFWSHGLAEMAGQRNKL CVSALAM
 DNF AEGVGAVYGMFDGDRNEELPRLLQCTMADVLL EEVQHSTSDTVFMANTFLVSHRKLGMAGQKLGSSA
 LLCYIRPDTADPTSSFLTVANVGTCAVLCRGGKPVPLSKVFSLEHDP EEAQRVKDQKAITEDNKVNG
 VTCCTRMLGCTYLPWILPKPHISSTPLTIQDELLILGNKALWEHLSYLEAVSAVRHVQDPLAAAKLCT
 LAQSYGCQDNVGMVVYLNIGEEGCTCEMHLALPGPVGFASTATIKDAPKPTTPSSSSGIASELSSEVS
 TSEVSSEVGSTASDEHNTVGLTSLPRPERRCSLHPVPSAGTFQRQPCATFSSNQSDNGLDSDDDQPV
 EGVITNGSRVEVEVDIHCRCGRESENPTLPKNSSYPCSEEHARGLGFGIRRQNSVNSGILLPVNKDKME
 LQKSPSTSCLYGKKLSNGSIVPLEDSLNLIEVATEAPKRKTGYFAAPTQLEPEDQFVVPDRLEDEVEKQM
 KQHQESRPEPEPREEDRTEPLQEFDTAL

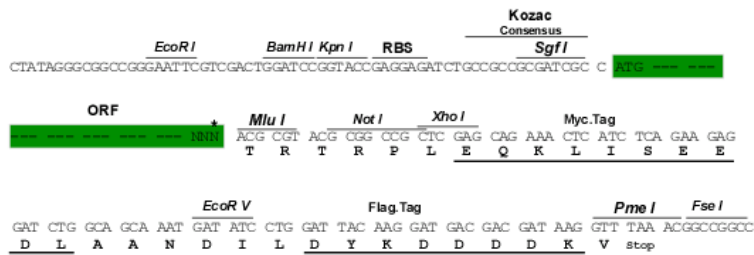
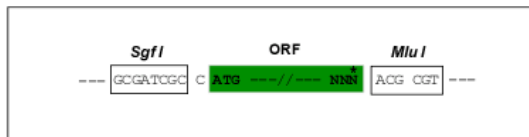
TRTRPLEQKLISEEDLAANDILDYKDDDDKV

Restriction Sites:

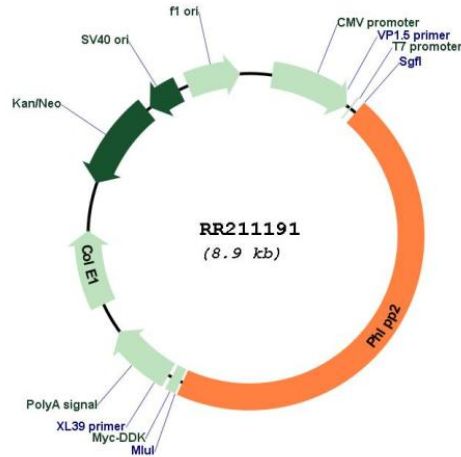
SgfI-MluI

Cloning Scheme:

Cloning sites used for ORF Shuttling:



* The last codon before the Stop codon of the ORF

Plasmid Map:


ACCN: NM_001109131

ORF Size: 4074 bp

OTI Disclaimer: The molecular sequence of this clone aligns with the gene accession number as a point of reference only. However, individual transcript sequences of the same gene can differ through naturally occurring variations (e.g. polymorphisms), each with its own valid existence. This clone is substantially in agreement with the reference, but a complete review of all prevailing variants is recommended prior to use. [More info](#)

OTI Annotation: This clone was engineered to express the complete ORF with an expression tag. Expression varies depending on the nature of the gene.

Components: The ORF clone is ion-exchange column purified and shipped in a 2D barcoded Matrix tube containing 10ug of transfection-ready, dried plasmid DNA (reconstitute with 100 ul of water).

Reconstitution Method:

1. Centrifuge at 5,000xg for 5min.
2. Carefully open the tube and add 100ul of sterile water to dissolve the DNA.
3. Close the tube and incubate for 10 minutes at room temperature.
4. Briefly vortex the tube and then do a quick spin (less than 5000xg) to concentrate the liquid at the bottom.
5. Store the suspended plasmid at -20°C. The DNA is stable for at least one year from date of shipping when stored at -20°C.

RefSeq: [NM_001109131.1](#), [NP_001102601.1](#)

RefSeq Size: 4148 bp

RefSeq ORF: 4077 bp

Locus ID: 498949

Cytogenetics: 19q12

MW: 150.3 kDa