

Product datasheet for **RR211183**

Ube2j2 (NM_001007655) Rat Tagged ORF Clone

Product data:

Product Type: Expression Plasmids
Product Name: Ube2j2 (NM_001007655) Rat Tagged ORF Clone
Tag: Myc-DDK
Symbol: Ube2j2
Synonyms: MGC94113
Vector: pCMV6-Entry (PS100001)
E. coli Selection: Kanamycin (25 ug/mL)
Cell Selection: Neomycin
ORF Nucleotide Sequence: >RR211183 representing NM_001007655
Red=Cloning site Blue=ORF Green=Tags(s)

TTTTGTAATACGACTCACTATAGGGCGGCCGGAATTCGTCGACTGGATCCGGTACCGAGGAGATCTGCC
GCC**CGGATCGCC**

ATGCATCAGGCCAAAAGCCCTTGATTCTGCCAGAAAGATGAGCAGTAACAGCAATAAGAGAGCTCCAACAA
CTGCGACACAAAGGTTGAAACAGGACTACCTTCGAATTAAGAAAGACCCAGTGCCTTACATCTGTGCGGA
GCCCTCCCTTCAAATATTCTTGAATGGCATTATGTTGTCCGAGGCCCTGAGATGACTCCTTATGAAGGT
GGCTATTATCATGGAAAATAATTTTTCCAGAGAATTTCCATTTAAGCCTCCTAGTATTTACATGATAA
CCCCAATGGAAGATTTAAGTGCAACACAAGGCTGTGTCTCTCCATCACAGATTTCCATCCAGATACATG
GAATCCAGCGTGGTCCGCTCCACCATTCTAACAGGGCTCCTGAGCTTTATGGTGGAGAAAGGCCCCACC
CTGGGGAGCATAGAGACATCGGACTTCACGAAAAACAGCTGGCAGCACAGAGCTAGTGTTTAATTTAA
AAGATAAAGTCTTCTGTGAATTTTCTGAAGTTGTGGAGGAAATTAACAGAAACAGAAAGCACAAGA
TGAATAAGTAACAGGCCCCAGAATCTTCTTTGCCAGACGTGGTTCCTGATGGGGAGATGCACCGTGCC
CAGAATGGGATCCAGCTCCTCAATGGGCATGCACCTGCTGCTGGCCAAACCTTGCTGGGCTCCCACAGG
CCAACAGGCATCATGGACTCCTGGGCGGCGCTTTGGCGAACTTGTTTGTATAGTTGGGTTTGGGCGCTT
TGCTACACGGTCAAATACGTGCTGAGAAGCATAGCACAGGAG

ACGCGTACGCGGCCGCTCGAGCAGAAACTCATCTCAGAAGAGGATCTGGCAGCAAATGATATCCTGGATT
ACAAGGATGACGACGATAAGGTTTAA



[View online »](#)

Protein Sequence: >RR211183 representing NM_001007655
 Red=Cloning site Green=Tags(s)

MHQAKALDSARKMSSNSNKRAPTTATQRLKQDYLRICKDPVPYICAEPLPSNILEWHYVVRGPEMTPYEG
 GYYHGKLIFFREFPFKPPSIYMITPNGRFKCNTRLCLSIDFHPDTWNPAWSVSTILTGLLSFMVEKGPT
 LGSIIETSDFTKKQLAAQSLVFNLKDKVFCELFPEVVVEIKQKQKAQDEL SNRPQNLPLPDVVDPDGMHRG
 QNGIQLLNHAPAAGPNLAGLPQANRHHGLLGGALANL FVIVGFAAFAYTVKYVLRISIAQE

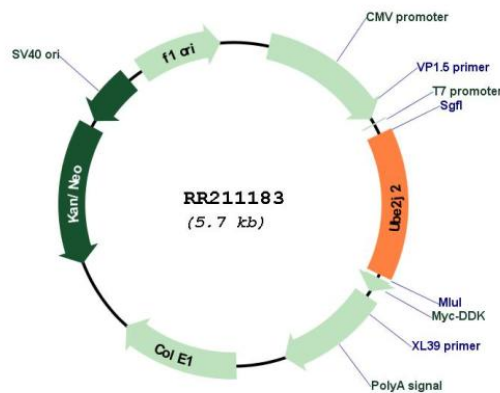
TRTRPLEQKLISEEDLAANDILDYKDDDDKV

Restriction Sites: SgfI-MluI

Cloning Scheme:



Plasmid Map:



ACCN: NM_001007655
ORF Size: 813 bp

| | |
|-------------------------------|---|
| OTI Disclaimer: | The molecular sequence of this clone aligns with the gene accession number as a point of reference only. However, individual transcript sequences of the same gene can differ through naturally occurring variations (e.g. polymorphisms), each with its own valid existence. This clone is substantially in agreement with the reference, but a complete review of all prevailing variants is recommended prior to use. More info |
| OTI Annotation: | This clone was engineered to express the complete ORF with an expression tag. Expression varies depending on the nature of the gene. |
| Components: | The ORF clone is ion-exchange column purified and shipped in a 2D barcoded Matrix tube containing 10ug of transfection-ready, dried plasmid DNA (reconstitute with 100 ul of water). |
| Reconstitution Method: | <ol style="list-style-type: none">1. Centrifuge at 5,000xg for 5min.2. Carefully open the tube and add 100ul of sterile water to dissolve the DNA.3. Close the tube and incubate for 10 minutes at room temperature.4. Briefly vortex the tube and then do a quick spin (less than 5000xg) to concentrate the liquid at the bottom.5. Store the suspended plasmid at -20°C. The DNA is stable for at least one year from date of shipping when stored at -20°C. |
| RefSeq: | NM_001007655.2 , NP_001007656.2 |
| RefSeq Size: | 1636 bp |
| RefSeq ORF: | 816 bp |
| Locus ID: | 298689 |
| Cytogenetics: | 5q36 |
| MW: | 30.3 kDa |