

Product datasheet for **RR211179**

Tomm70 (NM_212519) Rat Tagged ORF Clone

Product data:

Product Type:	Expression Plasmids
Product Name:	Tomm70 (NM_212519) Rat Tagged ORF Clone
Tag:	Myc-DDK
Symbol:	Tomm70
Synonyms:	TOM70; Tomm70a
Vector:	pCMV6-Entry (PS100001)
E. coli Selection:	Kanamycin (25 ug/mL)
Cell Selection:	Neomycin



[View online »](#)

ORF Nucleotide Sequence:

>RR211179 representing NM_212519
 Red=Cloning site Blue=ORF Green=Tags(s)

TTTTGTAATACGACTCACTATAGGGCGGCCGGAATTCGTCGACTGGATCCGGTACCGAGGAGATCTGCC
 GCC**CGCATCGCC**

ATGGCCGCTCTAAGCCGTAGAGCGGGCATGGCGCGGCTGCTGCGCCGCTTCTGAAATGGAGTGG
 GCAGTAGCGGTGGGACTGCGGCCCGGCTCGGGCGGGGACCTGCCCGATGGCACGTGGCGCTGGC
 CATCGGGGCGCCCTGTTGCTGGGTGCTGGGGCCATGTACCTGTGGAGCCGAAGACGGAGCGCCGGAA
 GCCGGAGCGGGGGCAGCCAGCGGCCTGAAGCGCAACAGCAACGAAAGACCCAGAGGGCAGGGCCA
 GTCCGGCCCTGGGCAGTGGCCCCGACGGTCTGGTGACTCCCTGGAAATGAGCTCTCTGGATAGAGCCCA
 AGCAGCCAAAAATAAGGCAACAATATTTCAAAGCAGGAAAATATGAGCAAGCTATTCAGTGCTATACC
 GAGGCTATTAGTCTGTGCCCTACTGAGAAGAATGCAGACCTCTACATTTTATCAGAACAGAGCTGCTG
 CCTTTGAACAGTTGCAAAAATGGAAAGAAGTGGCCCAAGATTGTACAAAGCCGTTGAACCTAATCCCAA
 ATATGTGAAAGCTCTCTTAGACGTGCAAAAGCCCATGAGAAGCTAGACAATAAGAAGGAGTGTAGAA
 GATGTCACCTGCTGTGTATATTAGAAGGGTTCAAAATGAGCAGAGCATGCTGTAGCTGATAAAGTTC
 TAAACTTCTCGGAAAGAGAATGCCAAAGAAAAATATAAGAACCAGGAACTCTGATGCCATCTCCACA
 GTTTATTAATCTTACTTCACTTCTTACCGGATGACATAATTTCTCAGCCAATGCTTAAAGGAGAGAAG
 TCTGACGAAGATAAGGACAAGGAGGGAGAAGCGTTAGAAGTAAAAGAAAATCTGGATATTTAAAAGCTA
 ACAAATATATGGAAGAAGAAAATATGACAAAATCATAAGTGAATGCTCAAAGGAAATAGATGCTCAAGG
 CAAATACATGGCAGAGGCATTACTACTACGAGCCACCTTCTACTTGCTTATTGGCAGTGCCAACGCGGCC
 AAGCCTGACTTAGATAAAGTCACTAGTTGAAGGAAGCTAACGTGAAGCTTCGAGCAAATGCCCTTATCA
 AAAGAGGCACCATGTGCATGCAGCAGCAGCAGCCTATGCTGTCTACTCAGGACTTCAACATGGCTGCTGA
 GATTGACCCATGAACCTCGGATGTTTATACCACCGAGGACAGCTGAAAAATCCTGCTGGATCTAGTTGAA
 GAAGCAGTGCCAGATTTTATGATGATGATCAGACTAAGACCGAAGTTTGGTTTGGCACAGGCTCAGAAGT
 GTTTTGCATTGTATCGGCAGGCATATACAGCAAACAATCTTTCGCAAGTCCAGGCAGCTATGAAAGGTTT
 TGAAGAAGTCATAAAGAAATTTCCAAGGTGTGCTGAAGGCTATGCACTTTATGCCAGGCATTAACAGAT
 CAACAACAATTTGGTAAAGCTGATGAAATGTATGATAAATGATTGATTGGAACAGATAATGCTACAA
 CTTATGTTCAAAAGTTTACTTCAACTCAGTGAAGCAAGATTTGGATAAAGGTTTGGAGCTTATCAG
 CAAAGCTATTGAAATTGACAACAATGTGACTTTGCGTATGAGACCATGGGGACTATTGAAGTGCAGAGA
 GAAACATGGAGAAAGCCATTGACATGTTCAACAAGCTATCAACCTGGCCAAGTCGAAATGGAGATGG
 CTATCTGTACTCACTTTGTGATGCTGCCATGCCAGACAGAAGTAGCAAAGAAAATACGGATTAACC
 ACCGACATTA

ACGCGTACGCGGCCGCTCGAGCAGAAACTCATCTCAGAAGAGGATCTGGCAGCAAATGATATCCTGGATT
 ACAAGGATGACGACGATAAGGTTTAA

Protein Sequence:

>RR211179 representing NM_212519
 Red=Cloning site Green=Tags(s)

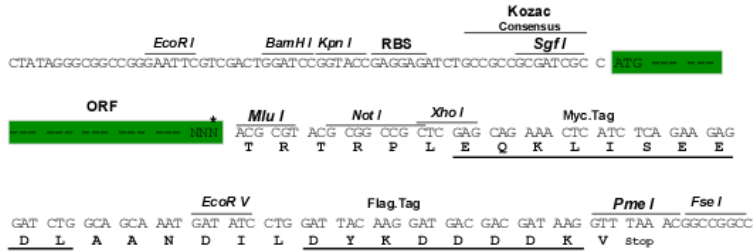
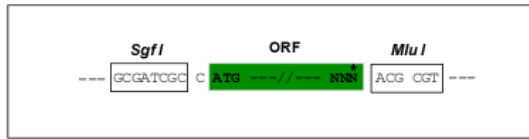
MAASKPVEAAMAAAAAPASGNGVSSGGTAAAPGSGAGTLPRWHVALAIGAPLLLGAAGMYLWSRRRRRRE
 AGGRGDASGLKRNSERKTPEGRASPALGSGPDGSGDSLEMSSLDRAQAANKNGKNYFKAGKYEQAIQCYT
 EAIISLCPTEKNADLSTFYQNRAAAFEQLQKWEVAQDCTKAVELNPKYVKALFRRAKAHEKLDNKKECLE
 DVTAVCILEGFQNEQSMLLADKVLKLLGKENAKEKYKNREPLMPSPQFIKSYFSSFDDDIISQPMLKGEK
 SDEDKKEGEALEVKENSGYLKAKQYMEENYDKIISECSKEIDAQGYMAEALLLRATFYLLIGSANAA
 KPDLDKVISLKEANVKLRANALIKRGTMCMQQQPMLSTQDFNMAAIEDPMNSDVYHHRGQLKILLDLVE
 EAVADFDACIRLRPKFALAQAQKCFALYRQAYTANNSSQVQAAMKGFEEVIKKFPRAEGYALYAQALTD
 QQQFGKADEMYDKCIDLEPDNATTYVHKGLLQLQWKQDLKLELISKAIEIDNKCDFAYETMGTIIEVQR
 GNMEKAIDMFNKAINLAKSEMMAHLYSLCDAHAHQTEVAKKYGLKPPTL

TRTRPLEQKLISEEDLAANDILDYKDDDDKV

Restriction Sites: SgfI-MluI

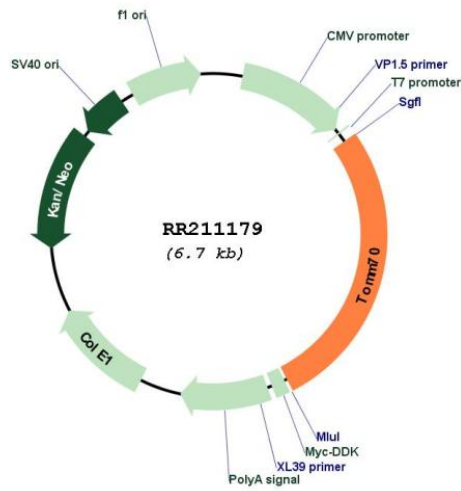
Cloning Scheme:

Cloning sites used for ORF Shuttling:



* The last codon before the Stop codon of the ORF

Plasmid Map:



ACCN: NM_212519

ORF Size: 1830 bp

OTI Disclaimer:	The molecular sequence of this clone aligns with the gene accession number as a point of reference only. However, individual transcript sequences of the same gene can differ through naturally occurring variations (e.g. polymorphisms), each with its own valid existence. This clone is substantially in agreement with the reference, but a complete review of all prevailing variants is recommended prior to use. More info
OTI Annotation:	This clone was engineered to express the complete ORF with an expression tag. Expression varies depending on the nature of the gene.
Components:	The ORF clone is ion-exchange column purified and shipped in a 2D barcoded Matrix tube containing 10ug of transfection-ready, dried plasmid DNA (reconstitute with 100 ul of water).
Reconstitution Method:	<ol style="list-style-type: none">1. Centrifuge at 5,000xg for 5min.2. Carefully open the tube and add 100ul of sterile water to dissolve the DNA.3. Close the tube and incubate for 10 minutes at room temperature.4. Briefly vortex the tube and then do a quick spin (less than 5000xg) to concentrate the liquid at the bottom.5. Store the suspended plasmid at -20°C. The DNA is stable for at least one year from date of shipping when stored at -20°C.
RefSeq:	NM_212519.2 , NP_997684.1
RefSeq Size:	2298 bp
RefSeq ORF:	1833 bp
Locus ID:	304017
UniProt ID:	Q75Q39
Cytogenetics:	11q12
MW:	67.4 kDa
Gene Summary:	mitochondrial-specific protein integral to the outer membrane; may be a component of the preprotein import machinery, a multisubunit complex involved in the recognition, unfolding and translocation of preproteins into the mitochondria [RGD, Feb 2006]