

Product datasheet for **RR211155**

Scmh1 (NM_001109669) Rat Tagged ORF Clone

Product data:

Product Type:	Expression Plasmids
Product Name:	Scmh1 (NM_001109669) Rat Tagged ORF Clone
Tag:	Myc-DDK
Symbol:	Scmh1
Vector:	pCMV6-Entry (PS100001)
E. coli Selection:	Kanamycin (25 ug/mL)
Cell Selection:	Neomycin



[View online »](#)

ORF Nucleotide
Sequence:

>RR211155 representing NM_001109669
Red=Cloning site Blue=ORF Green=Tags(s)

TTTTGTAATACGACTCACTATAGGGCGGCCGGAATTCGTCGACTGGATCCGGTACCGAGGAGATCTGCC
GCC**CGGATCGCC**

ATGCTGGTTTGCTACAGTGTGTTAGCTTGTGAGAGTCTCTGGACCTTCCCTGCTCCATCATGGGGTCAC
CTCTAGGTCATTTTACCTGGGACAAATACCTAAAAGAAACAAGTTCAGTCCCAGCACCTGTCCATTGCTT
CAAGCAGTCTACACACCTCCAAGCAATGAGTTCAAGATTAGCATGAAATTGGAAGCACAGGACCCAGG
AACACCACGTCCACCTGTATTGCCACAGTAGTTGGACTGACAGGTGCCGACTCCGTCTGCGCCTTGATG
GCAGTGACAACAAGAATGACTTCTGGAGACTGGTTGACTCCTCCGAAATCCAACCAATTGGAAACTGTGA
GAAGAATGGCGGTATGCTGCAGCCACCTTAGGATTTGCGCTGAATGCCTCCTCTTGCCCATGTTCCCTT
TTGAAGACGCTAAATGGAGCAGAGATGGCTCCCATCAAGATTTCCATAAGGAGCCACCATCACCTTCCC
ACAACCTCTTCAAATGGGAATGAAGTTGGAAGCTGTGGACAGAAAGAACCCTCATTTCATCTGCCAGC
CACTATTGGAGAGGTCCGAGGCTCAGAGGTGCTGGTACCTTTGATGGGTGGCGAGGCGCATTGACTAC
TGGTGGCCGCTTTGACTCCCGGACATCTTCTGTGGGCTGGTGTCTTTGACTGGAGATAACCTGCAGC
CGCTGGCACAAAGTTGTGATTCAAAGAATCCTTCCCCTTCGTCTGATGTGAGCACTGAGAAGCCAG
CATCAACAGCACCAAACTGTCTTGGAGCCTCAGCCAGGGCAGAGAGGGCGCAAACCAGGAAAGAAGCGG
GGCCGAACGCCAAGATCCTTATCCCCATCCCACCTCTACCCCATCAAAGTCAAGTGAACCTTTGAAAT
TTCAAAGAAGAGAGGCCCAAGCCTGGCAGTAAGAGGAGACCTCGGACTTTGCTGAGCCCACCACCCAC
CTCACCAACAACCAGCACTCTGAACGGACACCAGCACTGTTCCCAAGATGCTGCCACCATCCAAGT
TCAGCCATGCAGGCCCCACAGTTTGTATCTACTTGAACAAGAGCGGCAGCACGGGCCCCCACTTGATA
AAAAGAAGATCCAACAACCTCCCTGACCATTTTGGGCCAGCCCGTGCCTCTGTGGTGTGACAGGCTGT
CCAGGCTTGCAATTGACTGTGCTTATCACAGAAAACCTGTCTTCAAGCTTCCCAAACAGGGCCATGGCGGT
GAAGTCATCTCAGCCGTGTTGACCGGGAACAGCACACTCAACCTCCCAGCCGTC AACAGCATACCT
ATGTCCTCCGTTTCTGGAGAAGCTCTGCCACAACCTTCGGAGTGACAATCTGTTTGGCAACCAGCCCTT
TACACAGACTCACGTGTCACTACTGCCACAGAGTACAGCCACGGCCACGACAGGTACCTACCAGGTGAA
ACCTTTGCTCCTGGGCAATAGCCTGACGAGGTCTTGGAGACACTCAGACCTGATGGACTCTGCCTTGA
AGCCTGCCAACCTCGTCAGCACGTCCCAGACCCTCCGGACTCCTGGCTATCGGCCCTTGCTTCCCTCCTG
TGGCCTTCCATTGAGCACTGTCTGCTGTGCGCAGGCTCTGCTCTCGGGGAGTGTTAAAAGGAACAAGG
GAAAGAAGGGATGTGGAATCATTGAAACTAAATCATTCCCCAGGGTCAGATCGACACCTGGAGAGCC
GAGATCCCCCTCGCTAAGTGGCCGGGACCCCTCCTCATGGACAGTGGAGGATGTGATGCAGTTTGTCCG
GGAGGCTGATCCTCAGCTTGGATCCCATGCTGACCTTCCGAAAACATGAAATCGATGGCAAGGCCCTG
CTCCTGTGCGCAGTGACATGATGATGAAGTACATGGGCTGAAGCTGGGGCCTGCCCTCAAGCTCTCCT
TTCACATTGACCGGTGAAGCAGGGCAAGTTC

ACGCGTACGCGGCCGCTCGAGCAGAACTCATCTCAGAAGAGGATCTGGCAGCAATGATATCCTGGATT
ACAAGGATGACGACGATAAGGTTTAA

Protein Sequence: >RR211155 representing NM_001109669
 Red=Cloning site Green=Tags(s)

```
MLVCYSVLACESLWDLPCSIMGSPLGHFTWDKYLKETSSVPAPVHCFKQSYTPPSNEFKISMKLEAQDPR
NTTSTCIATVVGLTGARLRLRLDGSNDKDFWRLVDSSEIQPIGNCEKNGGMLQPPLGFRLNASSWPMFL
LKTNLGAEMAPIKIFHKEPPSPSHNFFKMGMKLEAVDRKNPHFICPATIGEVRGSEVLVTFDGRGAFDY
WCRFDSRDIFPVGWCSLTGDNLQPPGTVVVPKPNPSSSDVSTKPSINSTKTVLEPQPGQRGRKPGKKR
GRTPKILIPHTSTPSKSAEPLKFKPKRGPKPGSKRRPRTLSPPTSTPTSTPEPDTSTVPQDAATIPS
SAMQAPTVCIIYLNKSGSTGPHLDKKKIQQLPDHFGPARASVVLQAVQACIDCAYHQKTVFSFLKQHG
EVI SAVFDREQHTLNLPAVNSITYVLRFLLEKLCHNLRSDNLFNGQPFTQTHVSLTATEYSHGHDRYL
PGE TFVLGNSLTRSLETHSDLMSALKPANLVSTSQTLRTPGYRPLLSCGLPLSTVS AVRRLCSRGVLK
GTR ERRDVESFWKLNHSPGSDRHLESRDPPRLSGRDPSSWTVEDVMQFVREADPQLGSHADLFRKHEID
GKAL LLLRSDMMMKYMGLKLGPAKLKSFHIDRLKQGGK
```

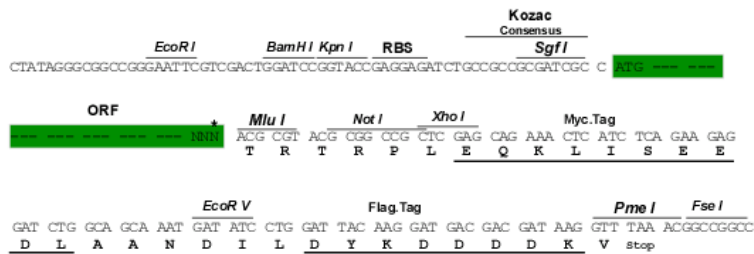
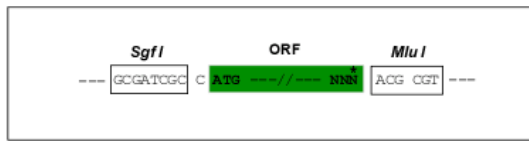
TRTRPLEQKLISEEDLAANDILDYKDDDDKV

Restriction Sites:

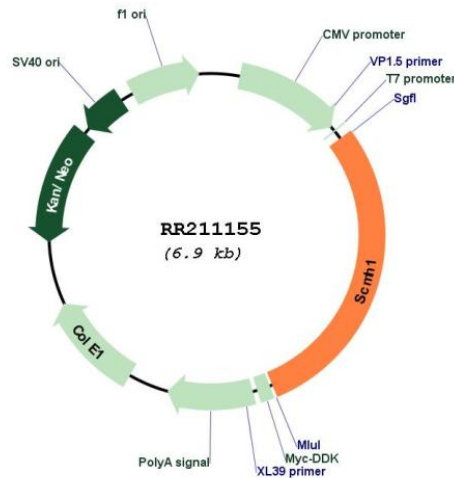
SgfI-MluI

Cloning Scheme:

Cloning sites used for ORF Shuttling:



* The last codon before the Stop codon of the ORF

Plasmid Map:


ACCN: NM_001109669

ORF Size: 1992 bp

OTI Disclaimer: The molecular sequence of this clone aligns with the gene accession number as a point of reference only. However, individual transcript sequences of the same gene can differ through naturally occurring variations (e.g. polymorphisms), each with its own valid existence. This clone is substantially in agreement with the reference, but a complete review of all prevailing variants is recommended prior to use. [More info](#)

OTI Annotation: This clone was engineered to express the complete ORF with an expression tag. Expression varies depending on the nature of the gene.

Components: The ORF clone is ion-exchange column purified and shipped in a 2D barcoded Matrix tube containing 10ug of transfection-ready, dried plasmid DNA (reconstitute with 100 ul of water).

Reconstitution Method:

1. Centrifuge at 5,000xg for 5min.
2. Carefully open the tube and add 100ul of sterile water to dissolve the DNA.
3. Close the tube and incubate for 10 minutes at room temperature.
4. Briefly vortex the tube and then do a quick spin (less than 5000xg) to concentrate the liquid at the bottom.
5. Store the suspended plasmid at -20°C. The DNA is stable for at least one year from date of shipping when stored at -20°C.

RefSeq: NM_001109669.1, NP_001103139.1
RefSeq Size: 2976 bp
RefSeq ORF: 1995 bp
Locus ID: 362581
Cytogenetics: 5q36
MW: 73.7 kDa