

Product datasheet for **RR211154**

Scarf1 (NM_001107022) Rat Tagged ORF Clone

Product data:

Product Type:	Expression Plasmids
Product Name:	Scarf1 (NM_001107022) Rat Tagged ORF Clone
Tag:	Myc-DDK
Symbol:	Scarf1
Mammalian Cell Selection:	Neomycin
Vector:	pCMV6-Entry (PS100001)
E. coli Selection:	Kanamycin (25 ug/mL)



[View online »](#)

ORF Nucleotide
Sequence:

>RR211154 representing NM_001107022
Red=Cloning site Blue=ORF Green=Tags(s)

TTTTGTAATACGACTCACTATAGGGCGGCCGGAATTCGTCGACTGGATCCGGTACCGAGGAGATCTGCC
GCC**CGGATCGCC**

ATGCTGACCGCCATGGGACTAGGGCTGGTGTCTCACTGTTGCTGTTCTGGACTCGGGAGATCCAGGGAT
CCACGCTAGATCCAGCTGGTCAGCACGTCTGTATAGGCAGCAGCCCTCTGAGCTCCAGTGTGTTCCGGG
CTGGAGGCAGAAGGACCAAGAATGCACCATCCCCATCTGTGAGGGGCTGATGCCTGCAAGAAAGATGAG
GTGTGTGAAGCCGGCCTCTGTCGATGTAACCTGGATTCTTCGGAGCCCATTCAGCTCCCGTGTGTC
CAGGCCAGTACTGGGCCCCGACTGTCGTGAGACCTGCCCTTGCCATCCACGTGGCCAGTGCACACCAGC
CACGGGTGTGTCAGTCCAACTACTGGGCAAGCTCTGTGAGTCCCTGCACCTGCGGCCCC
CACGAAAATGTACCCAAAGACGGCTTGTGCCACTGCGACCCCGCTGGTGGTCACTACGTGTCGTC
GCCCTGCCAATGCAACCCATTAGCGCGCTGTGACCAGGTCACTGGAGCCTGCATATGCCGACGGGCTG
GTGGGGCCACCGTGCAGCTTCAGTTGCAACTGCCATACCTCGCCCTGCCCTCAGGACTCCGGCCGTTGC
ACCTGCCTGCAGGGCTGGTGGGGTCCAGAGTGTAGTGCAGGTGCCAGTGTGTGCCAGGACAATGCAGCG
TACTTCCGGCCACTGCTCCTGCCCTCCTGGCTTCCAAGGAGCCCTCTGTGAGCTGCCTTCAAGCCCGG
CCGCTATGGAGCGCAGTGCAAGAAAGCTGTGGCCACTGTGAGCCGAATGCCACGTGCTCTCCAGTCACC
GGCAACTGTGAGTCTGCAAGCCGGGCTGGAACGGAACCTCAGTGCAGCAGCCATGTCTCCAGGCACCT
TTGGTGTGAGAGTGCAGTGGGAAGTGCACCCCGCTGCCGACTTGAAGAGCCCTGTCAAGTGGAACTGGGCA
CTGCCAGCGTGCAGCCCTGGTGGCTGGGGCACAGGTGTGAGAACTTGTCCCTTGGTACCTTTGGG
AAGGGCTGCAGCTCTACCTGCCCTGCCTGTGTTAGGGGACTTGAATGCGGTGACTGGGGAATGTGCT
GCAGTGTGGCTACTGGGGACAGCTGCAATAGTTCTGCCCTTCTGGCTTCCACGGAACAATGTTC
TATGCCCTGCCAATGCCAGAGGGGCTCTGCCACCTGAGTCTGGGGCTGCCAGCTGGGCCACATGGT
AAAAATGCCCTCATTGTGGGCATCCTGGTACCTCTGCTGCTCCTCATGGGCATTATCTGCTGTGCT
ACTGCTGCTCAGTCTCCGACTGGACCCCAAGGACAGGCCTGAGAGAAATGGAGCTGCCTTTTTCAGGAT
GAAGCAGCAGGTGTGGGGGCCCTCACCAGCCTGGGCTCGGCACTGCCCTGTGGTCCCTCAGTAACTAC
AAGCTACCTTGGGTGACAGTTTCTCACCATGATCCAGAGGTTCCCTTCAACCACAGTTTTCATCGAGCCAC
CCTCTGCTGGCTGGCCCTCTGACGACTCTTCTCGTCTGATCCCGACTCTGGAGAAGAGGACGAAGCTCA
CGCCTACTTCATGCCACCTCGAGAAGAGACAGTCCCTATGACCCAAGAAGAATCACCAGCAGCCAGCCTT
CCTGGAGGCCCTTCCCTCCCCCTGAGGACGCCTCCACACCATCCCCATCCCACGCACCTCCAGCCTGG
CTCGGGCCAAGAGGCCATCCGTCTCTTTGCTGAAGGCACTAAGTTTGCACCACAAAATGGCCGAAGCTC
TGGGGATCTCTCCAGCCCATACGAAAACCAAGAGACTCTCCAGAGGTGCTCAGCCACGTCTGAAAGG
CAAGAGGCTGAGGAGTCTACAGGCCAGAGCAAGAAAACCCAGAAGAGGATGTTCTACAGCCACAAGCT
CTGGAGATGCTGCCACTAGTCACGGCCAACTCCACCTGGTAGCCGGACAGTGCAGCAATGTGTGAAAC
CACCGATGGAGGCATCCAGGAGAGCTCAGGGTCTGTGGCCACTATCTATATGCTGGCAGGGACACCCAG
AACTGAGGGCCCTGTCTGGTCTGTCTTTCGTCGTTTGGGAACTACCAGAAAGATCAGGCGGCGCCCA
AGGTAAGAGTGCATCCCTAAGCCTTTCGCGCATCTCTGGGTGGAACAGGCCAGCTCCGGGCTGTC
CCAGAGCTCTGGCTCAGCTCCAGGTGCTGTGCTCTCCGGGGCCATGGAGTCCACCCGAGTTAAGCCAGAG
GAAGCATCCAGAGGTCTGGGAGATGGCATTGAGAGCTTAGGGACAGTCCAGGAGCCAGTCGTTGGAAGCA
GTTCCCCGGAGCAGGTTCCAGAAGCAGGCTGAAGAACAGGAACAGGAGGAGCCCTGTATGAGATGT
TGTGCCATGCTGCAGCAT

ACGCGTACGCGGCCGCTCGAGCAGAACTCATCTCAGAAGAGGATCTGGCAGCAATGATATCCTGGATT
ACAAGGATGACGACGATAAGGTTTAA

Protein Sequence: >RR211154 representing NM_001107022
 Red=Cloning site Green=Tags(s)

```

MLTAMGLGLVFSLLLFWTREIQGSTLDPAGQHVICGSSPSELQCCSGWRQKDQECTIPICEGPDACKKDE
VCVKPGLCRCKPGFFGAHCSSRCPGQYWGPDCRETCPCHPRGQCEPATGVCQCQPNYWGKLCFPCCTCGP
HGKCDPKTGLCHCDPGWWSPTCRRPCQCNPLARCDQVTGACICPTGWWGHRCFSFCNCHTSPCLQDSGRC
TCLQGWWGPECSRRQCVRGQCSVTSGHCSCPPGFQALCELPCKPGRYGAQCKESCGHCEPNATCSPVT
GNCE SCKPGWNGTQCKQPCPPGTFGERCTGKCPRCRLEEPCQVETGHCQRCDPGWLGHRCEKPCPLGTFG
KGC SSTCPACVQGT CNAVTEGECVCSAGYWGTSCNSSCPSGFHGNNCSMPCQCPEGLCHPESGACQLGPHG
KNALIVGILVPLLLLLMGIICCVYCCSASRLDPKDRPERNGAAFFRMKQQVWGAL TSLGSALPCGSLSNY
KLPWVTVSHHDPEVFNHSFIEPPSAGWASDDSFSSDPDSGEDEAHAYFMPPREETVPMTQEESPAASL
PGGPFPPPEDASTPFIPIRTSSLARAKRPSVSFAEGTKFAPQNGRSSGDLSSPIRKPKRLSRGAQPRPEG
QEAEESTGPEQENPEEDVPTATSSGDAATSHGQLPPGSRTVTECVETTDGGIQESSGSVATIYMLAGTPQ
KPEGPVVSVFRRLGNYQKDQAAPKVKSAIPKPLRRSLGRNQASSGLSQSSGSAPGAVLSGAMESTAVKPE
EASRGLGDGIESLGTVQEPVVGSSSPEQGSQKQAEEQEEPLYENNVPMQLH
  
```

TRTRPLEQKLI SEEDLAANDILDYKDDDDKV

Restriction Sites: Sgfl-Mlul

Cloning Scheme:


ACCN: NM_001107022

ORF Size: 2469 bp

OTI Disclaimer: The molecular sequence of this clone aligns with the gene accession number as a point of reference only. However, individual transcript sequences of the same gene can differ through naturally occurring variations (e.g. polymorphisms), each with its own valid existence. This clone is substantially in agreement with the reference, but a complete review of all prevailing variants is recommended prior to use. [More info](#)

OTI Annotation: This clone was engineered to express the complete ORF with an expression tag. Expression varies depending on the nature of the gene.

Components: The ORF clone is ion-exchange column purified and shipped in a 2D barcoded Matrix tube containing 10ug of transfection-ready, dried plasmid DNA (reconstitute with 100 ul of water).

- Reconstitution Method:**
1. Centrifuge at 5,000xg for 5min.
 2. Carefully open the tube and add 100ul of sterile water to dissolve the DNA.
 3. Close the tube and incubate for 10 minutes at room temperature.
 4. Briefly vortex the tube and then do a quick spin (less than 5000xg) to concentrate the liquid at the bottom.
 5. Store the suspended plasmid at -20°C. The DNA is stable for at least one year from date of shipping when stored at -20°C.

RefSeq: [NM_001107022.1](#), [NP_001100492.1](#)

RefSeq Size: 2866 bp

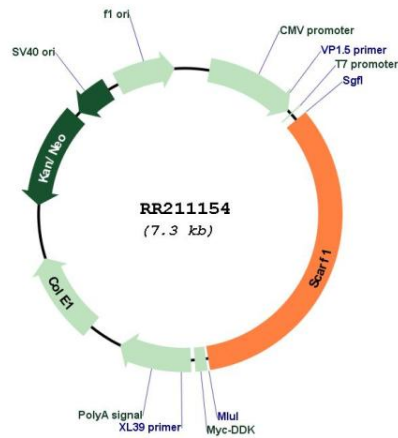
RefSeq ORF: 2472 bp

Locus ID: 303313

Cytogenetics: 10q24

MW: 87.7 kDa

Product images:



Circular map for RR211154