

## Product datasheet for **RR211057**

### **Cdk17 (NM\_001108082) Rat Tagged ORF Clone**

#### **Product data:**

Product Type:	Expression Plasmids
Product Name:	Cdk17 (NM_001108082) Rat Tagged ORF Clone
Tag:	Myc-DDK
Symbol:	Cdk17
Synonyms:	Pctaire2; Pctk2
Vector:	pCMV6-Entry (PS100001)
E. coli Selection:	Kanamycin (25 ug/mL)
Cell Selection:	Neomycin



[View online »](#)

**ORF Nucleotide Sequence:**

>RR211057 representing NM\_001108082  
 Red=Cloning site Blue=ORF Green=Tags(s)

TTTTGTAATACGACTCACTATAGGGCGGCCGGAATTCGTCGACTGGATCCGGTACCGAGGAGATCTGCC  
 GCC**CGGATCGCC**

ATGAAAAAGTTTAAAGAGGAGACTGTCCCTCAGCTCAGGGGAAGCCAGACTATTGATGAGTCCCTGTCCG  
 AGCTGGCTGAACAGATGACCATAGAGGAGAGCAGTAGCAAAGACAACAGCCATTGTGAAGAATGGCAG  
 GCCGCCAACGTCTCACAGCATGCATTCTTCTCCATCAGTACACAGGGTCTTCAAGAAGCCCACTG  
 CGAAGACCCACAGCGTTATTGGAGGAAGCCTTGGTTCCTTTATGGCAATGCCAGAAATGGAAGCAGAT  
 TAGATATTGTTTCATGAAAATCTGAAAATGGGATCAGATGGTGAGAGTGACCAAGCTTCTGGGACATCATC  
 TGATGAAGTCCAGTCCCCTACAGGTGTTTGCCTCAGAAATCGTATACATAGACGGATCTCGATGGAGGAC  
 TTGAATAAGCGGCTGTCGCTGCCTGCAGACATCAGGATACCCGATGGCTACCTGGAGAAGCTGCAGATCA  
 GCAGCCCGCCCTTCGACCAGCCCATGAGCCGAGGTCCCGCAGAGCTCCTTATCAGAAATTTGGTTTGG  
 GAAAATGGAACCTACATCAAATTTGAAAAGCTTGGAGAGGGCACATATGCAACGGTATATAAAGGGAGA  
 AGTAAGTTGACAGAGAAGCTTGGTGGCATTAAAAGAGATCCGCTTGAACACGAAGAAGGTGCACCCTGTA  
 CAGCTATAAGAGAAGTTTCACTGTTAAAGGACTTAAAACATGCAATATAGTAACGTTGCATGACATCGT  
 TCACACGGACAAGTCTTTGACTCTGGTCTTTGAGTACCTGGACAAAGACCTGAAGCAGTACATGGACGAC  
 TGTGGGAGCATCATGAGCATGCACAACGTCAAGCTGTTCTGTACCAGATTCTCCGTGGTTTGGCATATT  
 GCCATAGAAGAAAAGTGTTCACCGGGACCTGAAACCACAGAACCTCCTCATTAAAGAAAGGAGAACT  
 AAAGCTGGCTGACTTTGGACTAGCCAGAGCCAAGTCAGTCCCCACCAAGACCTACTCAAATGAAGTTGTC  
 ACGCTGTGGTATCGGCCCCCTGACGTGCTTCTTGGTTCCTCGGAGTACTCAACTCAGATCGACATGTGGG  
 GAGTTGGCTGCATTTTCTTGAATGGCTTCTGGAAGACCCTGTTCCAGGGTCAACTGGAAGATGA  
 ACTGCACCTAATATTTGACTACTAGGAACTCCATCTCAGGAACTTGGCCAGGTGTTTCTCAAATGAT  
 GAATTCAGAAGTACAACCTCCCAAATATAAGCCACAACCTCTAATTAATCATGCACCCAGGTTAGATT  
 CTGAAGGAATTGAGTTGATAACAAAGTTTCTTTCAGTATGAATCTAAGAAAAGGGCTCCAGCAGAAGAGGC  
 CATGAAACATGTGACTTCCGAAGTCTAGGGCCGAGAATACATGCTTTACCAGAAAGCGTATCAATATTC  
 AGTTTGAAGAGATTGAGTTGCAAAGGACCCGGGTTTTCGAAATTTCTCCTATCCAGAGACAGGACATG  
 GGAAGAACAGAAGACAGAGCATGCTCTTT

**ACGCGT**ACGCGGCCGCTCGAGCAGAAACTCATCTCAGAAGAGGATCTGGCAGCAAATGATATCCTGGATT  
 ACAAGGATGACGACGATAAGGTTTAA

**Protein Sequence:**

>RR211057 representing NM\_001108082  
 Red=Cloning site Green=Tags(s)

MKKFKRRLSLTLRGSQTIDESLSELAEQMTIESSSKDNEPIVKNGRPPTSHSMHSFLHQYTGSFKKPP  
 RRPHSVIGGSLGFMAMPRNGSRLDIVHENLKMGSDDGSDQASGTSSDEVQSPTGVCLRNRIHRRISMED  
 LNKRLSLPADIRIPDGYLEKLQISSPPFDQPMRSTRRASLSEIGFGKMETYIKLEKLGEGTYATVYKGR  
 SKLTENLVALKEIRLEHEEGAPCTAIREVSLKDLKHANIVTLHDIVHTDKSLTLVFEYLDKDLKQYMDD  
 CGSISMHNKFLYQILRGLAYCHRRKVLHRDLKPQNLLINERELKLAADFGLARAKSVPTKTYSNEV  
 TLWYRPPDVLLGSSEYSTQIDMWGVCIFFEMASGRPLFPGSTVEDELHLIFRLLGTPSQETWPGVSSND  
 EFKNYNFKPKYKQPLINHAPRLDSEGIELITKFLQYESKKRAPAEEMKHVYFRSLGPRIHALPESVSIF  
 SLKEIQLQKDPGFRNSSYPETGHGKNRRQSMLF

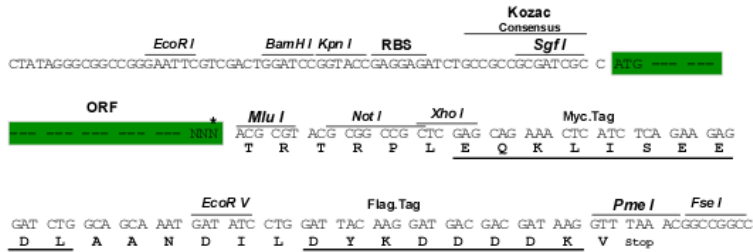
**TR**TRPLEQKLISEEDLAANDILDYKDDDDKV

**Restriction Sites:**

Sgfl-MluI

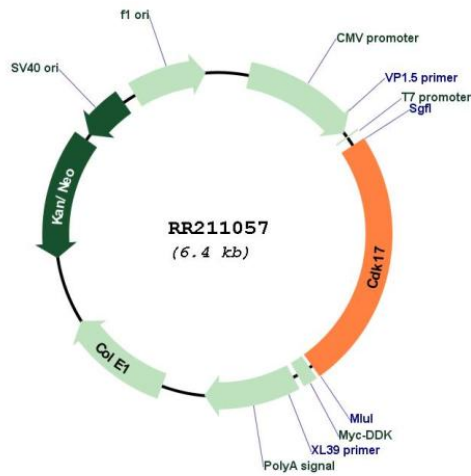
Cloning Scheme:

Cloning sites used for ORF Shuttling:



\* The last codon before the Stop codon of the ORF

Plasmid Map:



<b>ACCN:</b>	NM_001108082
<b>ORF Size:</b>	1569 bp
<b>OTI Disclaimer:</b>	The molecular sequence of this clone aligns with the gene accession number as a point of reference only. However, individual transcript sequences of the same gene can differ through naturally occurring variations (e.g. polymorphisms), each with its own valid existence. This clone is substantially in agreement with the reference, but a complete review of all prevailing variants is recommended prior to use. <a href="#">More info</a>
<b>OTI Annotation:</b>	This clone was engineered to express the complete ORF with an expression tag. Expression varies depending on the nature of the gene.
<b>Components:</b>	The ORF clone is ion-exchange column purified and shipped in a 2D barcoded Matrix tube containing 10ug of transfection-ready, dried plasmid DNA (reconstitute with 100 ul of water).
<b>Reconstitution Method:</b>	<ol style="list-style-type: none"><li>1. Centrifuge at 5,000xg for 5min.</li><li>2. Carefully open the tube and add 100ul of sterile water to dissolve the DNA.</li><li>3. Close the tube and incubate for 10 minutes at room temperature.</li><li>4. Briefly vortex the tube and then do a quick spin (less than 5000xg) to concentrate the liquid at the bottom.</li><li>5. Store the suspended plasmid at -20°C. The DNA is stable for at least one year from date of shipping when stored at -20°C.</li></ol>
<b>RefSeq:</b>	<a href="#">NM_001108082.2</a> , <a href="#">NP_001101552.2</a>
<b>RefSeq Size:</b>	3670 bp
<b>RefSeq ORF:</b>	1572 bp
<b>Locus ID:</b>	314743
<b>Cytogenetics:</b>	7q13
<b>MW:</b>	59.5 kDa