

Product datasheet for **RR211051**

Gpr37 (NM_057201) Rat Tagged ORF Clone

Product data:

Product Type:	Expression Plasmids
Product Name:	Gpr37 (NM_057201) Rat Tagged ORF Clone
Tag:	Myc-DDK
Symbol:	Gpr37
Synonyms:	Ednrbl
Vector:	pCMV6-Entry (PS100001)
E. coli Selection:	Kanamycin (25 ug/mL)
Cell Selection:	Neomycin



[View online »](#)

ORF Nucleotide Sequence:

>RR211051 representing NM_057201
 Red=Cloning site Blue=ORF Green=Tags(s)

TTTTGTAATACGACTCACTATAGGGCGGCCGGGAATTCGTCGACTGGATCCGGTACCGAGGAGATCTGCC
 GCC**CGGATCGCC**

ATGCCAGCCCCGGGCGCGCTCTCTCGCACATCGCGGTGCTGCTCCTTCTGCTGTTCAAGGTTTCTG
 TCTCTGCTGCCCTGAGCTTTGTCCCTGAGCCCAGGAATGGAACCTGTTTGGGGGAGAGCTGTTCCCACT
 GATTCCACGTCGCAGCAGGGATGCCGGGGACCTAGGAATTCAGCAAGAGATGCTCTGCGAGTCCATGTG
 CCCAGAGAAAAGCTGGAAGCAGAGGTGAGAGGGGCGACCTCTGGGACCTCCCACCACCCAGGGGCGGTG
 ACACAGGTGTGATTGAAGAGGCAGCGGCTTCTGGGCCCTTGGGACCTCCAACCAAGCCACCAGGTGCCTG
 GAGATGGAAGGAGCCCAGGGTAAAGAACCATCCGGACATTTGGGGAGAAGGGAGCCACGGACTCCCAA
 CTCTCCGTCAAACCTCTGAGAGAGGAGAGATGAGTTCCAAGCGCAGCAGATTTCCCAGGGCAGCCAGG
 AGCACAGTGTGAAAACAGAACCTGAACCCAGAGATCTTTTTACTGGCCAAGAAAACAGGACAACCTCA
 GGGTCCCATTACAGGCCTTCAGCGGTACACGAAGGAAGAACCTTGCTCCCCAGGCAGGGCGCTACCT
 CAAAACGGGTCTGCAGATGACTGGTCCCTGACCAAGGGGTCCACGCCGTGAAATAGCTAAACCGAC
 GCGTGAGACTGAAGAACCCTTCTACCCATTGACCCAGGAATCCTATGGAGCCTATGCTGTGCATGTGCTT
 ATCTGTGGTGATCTTTGGGACCGGCATCATTGGTAACTTGGCAGTGATGTGCATCGTGTGCACAATTAC
 TACATGAGGAGCATCTCAATTCTCTTTGGCCAACCTCGCTTTCTGGGACTTTCTCATCATCTTCTTCT
 GCCTCCCCTTGGTCATCTTCCATGAGTTGACCAAGAAGTGGCTTTTGGAAAGATTTCTCTGCAAGATCGT
 GCCCTATATCGAGGTAGCTTCTCTGGGTGCTACTACCTCACCTTATGTGCAGTGTGCATAGATCGCTTC
 CGGGCTGCCACCAACGTCCAGATGTACTATGAAATGATTGAAAATTGTTCTTCCACCAGTCCAAAACCTG
 CAGTTATCTGGGTTGGCGCTCTGCTCTTGGCACTTCGGGAAGTGTCTCCGCCAGCTGAGTAAGGAGGA
 TTTGGGCTTTAGTGGCCAGGCTCCTGCAGAACGGTGTGTATAAAGATCTCTCCCGATTTACCGGACACC
 ATCTATGTTTTGGCTCTCACTTATGATGGCGCACGGCTCTGGTGGTATTTCCGGCTGCTACTTTTGTCTGC
 CCACACTTTTCCACATCACTGCTCTAGTGACCGCTCGGAAGATCCGCAAGGCGGAGAAAAGCCAGTAC
 CCGTGGGAACAAGCGGCAGATCCATCTAGAGAGCCAGATGAACTGCACAGTGGTGGCTCTGACCATTTTA
 TATGGATTTTGCATCATCCCGAGAATATCTGCAACATCGTCACTGCCTACATGGCCACGGGTGTCTCTC
 AGCAGACCATGGACCTCCTCAACATCATCAGCCAGTTCCTTTTGTCTTCAAGTCTGCGTACCCTGT
 ACTCCTCTTCTGCTCTGCAGGCCCTTACGAGGGCTTCATGGAGTGTGCTGTGCTGCTGCGAGGAG
 TGCATCCAGAAGTCTTCCACTGTGACCAAGTGTGACAACGACAACGAGTACACCACAGAGCTGGAGTTGT
 CGCCCTCAGCACCATCCGACAGAGATGTCCACCTTTGCCTCTGTGGGACTCACTGC

AG**CGGACCG**ACGCGTACGCGGCCGCTCGAGCAGAACTCATCTCAGAAGAGGATCTGGCAGCAAATGATATCC
 TGGATTACAAGGATGACGACGATAAGGTTTAA

Protein Sequence:

>RR211051 representing NM_057201
 Red=Cloning site Green=Tags(s)

MPAPGAPLSRTSRLLLLLLKVSVSAALSFVPEPRNGTCLGESCSPLIPRRSRDAGGPRNSARDALRVHV
 PREKLEAEVRGATSWDLPPPRGGDTGVIEEAAASGPLPPTKPPGAWRWKGAQKKEPSGHLGRREPTDSQ
 LFRQTSERGEMSSKRDEIPQGSQEHVSKTEPEPRDLFYWPRKTGQLQGSHYRPSAVHEGRTLAPPGRALP
 QNGSADDWVPDQGGPRRNSTNRRVRLKNPFYPLTQESYGAYAVMCLSVVIFGTGIIGNLAVMCIVCHNY
 YMRSISNLLANLAFWDFLIIFCLPLVIFHELTKKWLLEDFSKIVPYIEVASLGVTTFTLCALCIDRF
 RAATNVQMYEMIENCSSTAKLAVIIVGALLLALPEVLRQLSKEDLGFSGQAPAERCVIKISPDLPDT
 IYVLLALTYDGARLWWYFGCYFCLPTLFTITCSLVTARKIRKAEKASTRGNKRQIHLESQMNCTVVALTIL
 YGFCIIPENICNIVTAYMATGVSQQTMDLLNIISQFLLFFKSCVTPVLLFCLCRPFSRAFMECCCCCEE
 CIQKSSVTSDNDNEYTTELELSPFSTIRREMSTFASVGTGC

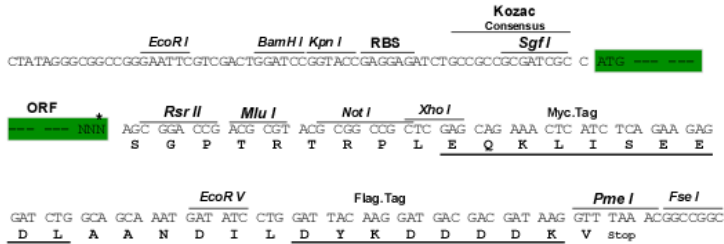
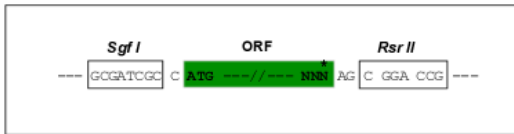
SGPTRTRPLEQKLI**SEEDLAANDILDYKDDDDKV**

Restriction Sites:

Sgfl-RsrII

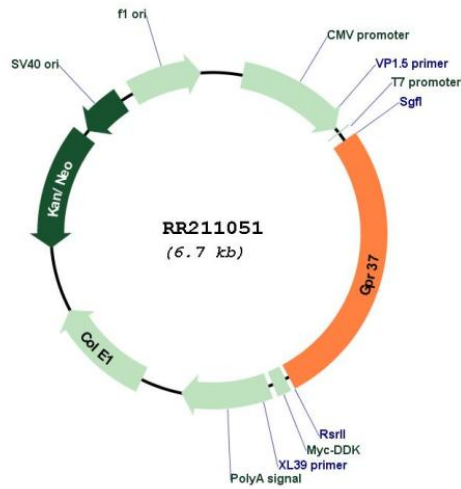
Cloning Scheme:

Cloning sites used for ORF Shuttling:



* The last codon before the Stop codon of the ORF

Plasmid Map:



ACCN: NM_057201

ORF Size: 1809 bp

OTI Disclaimer: Due to the inherent nature of this plasmid, standard methods to replicate additional amounts of DNA in E. coli are highly likely to result in mutations and/or rearrangements. Therefore, OriGene does not guarantee the capability to replicate this plasmid DNA. Additional amounts of DNA can be purchased from OriGene with batch-specific, full-sequence verification at a reduced cost. Please contact our customer care team at custsupport@origene.com or by calling 301.340.3188 option 3 for pricing and delivery.

The molecular sequence of this clone aligns with the gene accession number as a point of reference only. However, individual transcript sequences of the same gene can differ through naturally occurring variations (e.g. polymorphisms), each with its own valid existence. This clone is substantially in agreement with the reference, but a complete review of all prevailing variants is recommended prior to use. [More info](#)

OTI Annotation: This clone was engineered to express the complete ORF with an expression tag. Expression varies depending on the nature of the gene.

Components: The ORF clone is ion-exchange column purified and shipped in a 2D barcoded Matrix tube containing 10ug of transfection-ready, dried plasmid DNA (reconstitute with 100 ul of water).

Reconstitution Method:

1. Centrifuge at 5,000xg for 5min.
2. Carefully open the tube and add 100ul of sterile water to dissolve the DNA.
3. Close the tube and incubate for 10 minutes at room temperature.
4. Briefly vortex the tube and then do a quick spin (less than 5000xg) to concentrate the liquid at the bottom.
5. Store the suspended plasmid at -20°C. The DNA is stable for at least one year from date of shipping when stored at -20°C.

RefSeq: [NM_057201.1](#), [NP_476549.1](#)

RefSeq Size: 3104 bp

RefSeq ORF: 1812 bp

Locus ID: 117549

UniProt ID: [Q9QYC6](#)

Cytogenetics: 4q22

MW: 67 kDa

Gene Summary: an orphan G protein-coupled receptor that may have an important role in the central nervous system [RGD, Feb 2006]