

## Product datasheet for **RR211032**

### Penk (NM\_017139) Rat Tagged ORF Clone

#### Product data:

**Product Type:** Expression Plasmids  
**Product Name:** Penk (NM\_017139) Rat Tagged ORF Clone  
**Tag:** Myc-DDK  
**Symbol:** Penk  
**Synonyms:** Enk; Penk-rs; Penk1; Penk2  
**Mammalian Cell Selection:** Neomycin  
**Vector:** pCMV6-Entry (PS100001)  
**E. coli Selection:** Kanamycin (25 ug/mL)  
**ORF Nucleotide Sequence:** >RR211032 representing NM\_017139  
**Red=Cloning site Blue=ORF Green=Tags(s)**

TTTTGTAATACGACTCACTATAGGGCGCCGGGAATTCGTCGACTGGATCCGGTACCGAGGAGATCTGCC  
GCC**CGATCGCC**

ATGGCGCAGTTCCTGAGACTTTGCATCTGGCTCGTAGCGCTTGGGTCTGCCTCCTGGCTACAGTGCAGG  
CAGACTGCAGCCAGGACTGCGCTAAATGCAGCTACCGCTGGTACGTCCCGGCGACATCAACTTCCTGGC  
ATGCACACTCGAATGTGAAGGGCAGCTGCCTTCTTTCAAATCTGGGAGACCTGCAAGGATCTCCTGCAG  
GTGTCCAAGCCCGAGTTCCTTTGGGATAACATCGACATGTACAAAGACAGCAGCAACAGGATGAGAGCC  
ACTTGCTAGCCAAGAAGTATGGAGGGTTCATGAAACGGTATGGAGGCTTCATGAAGAAGATGGATGAGCT  
TTACCCCGTGGAGCCAGAAGAAGAGGCCAATGGAGGCGAGATCCTTGCCAAGAGGTATGGCGTTTCATG  
AAGAAGGATGCAGATGAGGGAGACACCTTGCCCAACTCCTCCGACCTGCTGAAAGAGCTACTGGGAACAG  
GAGACAACCGTGCAAAAGATAGCCACCAACAGGAAAGCACCAACAATGATGAAGACAGCAGGAGCAAGAG  
GTATGGGGGCTTCATGAGAGGCCCAAAAAGAAGCCCCAGCTGGAAGACGAAGCAAGGAGCTGCAGAA  
CGCTATGGGGGCTTCATGAGAAGGTGGGGCGCCCGAGTGGTGGATGGACTATCAGAAGAGATACGGAG  
GCTTCTGAAGCGCTTTGCTGAGTCTCTACCCTCGGATGAAGAAGGCGAAAGTTACTCTAAAGAAGTTCC  
CGAGATGGAAAAAAGATACGGAGGCTTTATGCGGTTT

**ACGCGT**ACGCGGCCGCTCGAGCAGAAACTCATCTCAGAAGAGGATCTGGCAGCAAATGATATCCTGGATT  
ACAAGGATGACGACGATAAGGTTTAA



**Protein Sequence:** >RR211032 representing NM\_017139  
Red=Cloning site Green=Tags(s)

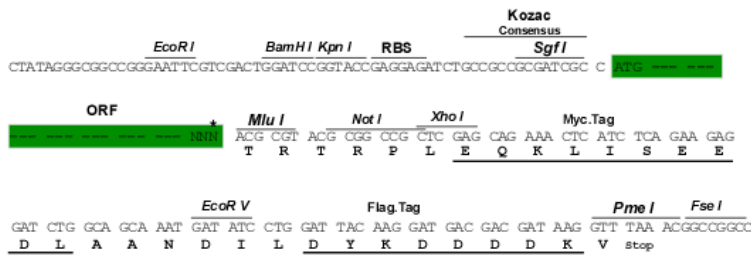
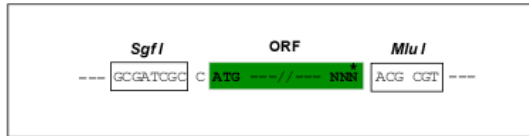
MAQFLRLCIWLVALGSCLLATVQADCSQDCAKCSYRLVRPGDINFLACTLECEGQLPSFKIWETCKDLLQ  
 VSKPEFPWDNIDMYKDSSKQDESHLLAKKYGGFMKRYGGFMKKMDELYPVEPEEEANGGELAKRYGGFM  
 KKDADEGDTLANSDDLKELLGTGDNRAKDSHQQESTNNDSTSKRYGGFMRLKRSQLEDEAKELQK  
 RYGGFMRRVGRPEWMDYQKRYGGFLKRF AESLPSDEEGESYSKEVPEMEKRYGGFMRF

TRTRPLEQKLISEEDLAANDILDYKDDDDKV

**Restriction Sites:** SgfI-MluI

**Cloning Scheme:**

Cloning sites used for ORF Shuttling:



\* The last codon before the Stop codon of the ORF

**ACCN:** NM\_017139

**ORF Size:** 807 bp

**OTI Disclaimer:** The molecular sequence of this clone aligns with the gene accession number as a point of reference only. However, individual transcript sequences of the same gene can differ through naturally occurring variations (e.g. polymorphisms), each with its own valid existence. This clone is substantially in agreement with the reference, but a complete review of all prevailing variants is recommended prior to use. [More info](#)

**OTI Annotation:** This clone was engineered to express the complete ORF with an expression tag. Expression varies depending on the nature of the gene.

**Components:** The ORF clone is ion-exchange column purified and shipped in a 2D barcoded Matrix tube containing 10ug of transfection-ready, dried plasmid DNA (reconstitute with 100 ul of water).

**Reconstitution Method:**

1. Centrifuge at 5,000xg for 5min.
2. Carefully open the tube and add 100ul of sterile water to dissolve the DNA.
3. Close the tube and incubate for 10 minutes at room temperature.
4. Briefly vortex the tube and then do a quick spin (less than 5000xg) to concentrate the liquid at the bottom.
5. Store the suspended plasmid at -20°C. The DNA is stable for at least one year from date of shipping when stored at -20°C.

**RefSeq:** [NM\\_017139.1](#), [NP\\_058835.1](#)

**RefSeq Size:** 1446 bp

**RefSeq ORF:** 810 bp

**Locus ID:** 29237

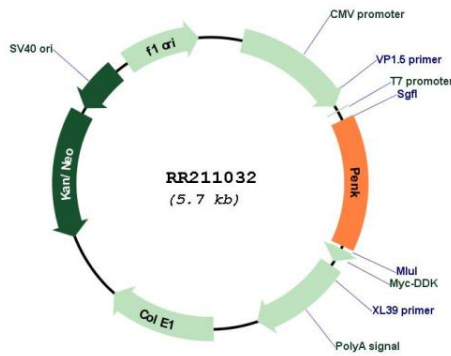
**UniProt ID:** [P04094](#)

**Cytogenetics:** 5q12

**MW:** 30.9 kDa

**Gene Summary:** neuropeptide hormone; plays a role in the responses to stress and pain perception [RGD, Feb 2006]

**Product images:**



Circular map for RR211032