

Product datasheet for **RR211011**

Fus (NM_001012137) Rat Tagged ORF Clone

Product data:

Product Type:	Expression Plasmids
Product Name:	Fus (NM_001012137) Rat Tagged ORF Clone
Tag:	Myc-DDK
Symbol:	Fus
Vector:	pCMV6-Entry (PS100001)
E. coli Selection:	Kanamycin (25 ug/mL)
Cell Selection:	Neomycin



[View online »](#)

ORF Nucleotide Sequence:

>RR211011 representing NM_001012137
 Red=Cloning site Blue=ORF Green=Tags(s)

TTTTGTAATACGACTCACTATAGGGCGGCCGGAATTCGTCGACTGGATCCGGTACCGAGGAGATCTGCC
 GCC**CGGATCGCC**

ATGGCTTCAAACGACTATACCCAACAAGCAACTCAAAGCTATGGGGCCTATCCTACCCAGCCTGGGCAGG
 GCTATTCCAACAGAGCAATCAGCCCTATGGCCAGCAGAGTTACAGTGGTTATGGCCAATCAGCTGACAC
 TTCAGGATACGGCCAGAGCAGCTATGGTTCTTCTTATGGACAGACCCAAAACACAGGCTATGGAACCTCAG
 TCAGCACCCAGGGATATGGTTCCACTGGTGGCTATGGCAGCAGCCAAAGTTCCAGTCTTCTTATGGGC
 AGCAGTCTCTACCCCGTTATGGCCAACAGCCAGCTCCTAGTAGCACCTCAGGAAGTTATGGTGGAAAG
 TTCTCAGAGCAGCAGCTATGGGCAGCCCCAGAGTGGAGGCTATGGTCAACAGTCTGGCTATGGTGGACAG
 CAACAAAGCTACGGACAGCAACAAAGCTCCTATAACCCACCTCAGGGTTATGGACAACAGAACAGTACA
 ACAGCAGCAGTGGAGTGGTGGAGGGGGTGGTGGAGGCAACTATGGCCAAGATCAGTCTCTATGAGTGG
 CGGCGCGGTGGTGGTGGTTATGGCAATCAGGACCAGAGTGGTGGCGCGGTGGTGGCTACGGGGGAGGC
 CAGCAGGATCGTGGGGCGGTGGCAGGGGCGGTGGAGGTGTTACAACCGAAGCAGTGGTGGCTATGAAC
 CCAGAGGCCGTGGAGTGGCCGAGGAGGAGGCGGCATGGGCGGAAGTGACCGTGGTGGCTTCAATAA
 ATTTGGTGGTCTCGGGATCAAGGATCTCGTCATGATTCTGAACAGGATAATTCAGACAATAATACCATC
 TTCGTGCAAGGCCTAGGCGAGAAATGTTACAATTGAATCTGTGGCGGATTACTTCAAGCAGATTGGAATTA
 TTAAGACAACAAGAAAAGTGGACAGCCTATGATTAATTTGTATACAGACAGAGAAAAGTGGCAAGTTGAA
 GGGTGAGGCAACAGTCTCATTGATGACCCACCTTCTGCTAAAGCTGCAATCGACTGGTTGATGGAAAA
 GAATTCCTGGGAATCCTATTAAGTTTCATTTGCTACCCGCGTGTGACTTCAACCGGGTGGTGGAA
 ATGGTCTGGAGGCCGAGGGCGAGGAGGACCCATGGGCCGTGGAGGCTATGGAGGAGTGGCAGCGGTGG
 TGGTGGCCGCGGGAGGATTTCCAGTGGAGTGGTGGAGGTGGAGGACAGCAACGAGCTGGGGACTGGAAAG
 TGTCTAATCCTACATGTGAGAATGAACCTCTCTGGAGAAGTGAATGCAACAGTGTAAAGCACCTA
 AGCCAGATGGCCAGGAGGGGACCAGGAGGCTCTCATATGGGGGAAAACACGGAGATGATCGGCGTGG
 CAGAGGAGGATATGATCGGGGCGGTACCCGGGCGGAGGAGGGGACCGAGGGGGCTTACAGAGGGGCGG
 GGTGGTGGGGACAGAGTGGTTTGGCCCTGGCAAGATGGACTCCAGGGGTGAGCACAGACAGGATCGCA
 GGGAGAGGCCATAT

ACGCGTACGCGGCCGCTCGAGCAGAAAACCTCATCTCAGAAGAGGATCTGGCAGCAAATGATATCCTGGATT
 ACAAGGATGACGACGATAAGGTTTAA

Protein Sequence:

>RR211011 representing NM_001012137
 Red=Cloning site Green=Tags(s)

MASNDYTQQATQSYGAYPTQPGQGYSSQSNQPYGQQSYSGYQSADTSGYGQSSYSSYGQTQNTGYGTQ
 SAPQGYGSTGGYSSQSSSYGQQSSYPGYGQQPAPSSSTSGSYGGSSQSSSYGQPQSGGYGQQSGYGGQ
 QQSYGQQSSYNPPQGYGQQNQYNSSSGGGGGGGGNYGQDQSSMSGGGGGGNYGQDQSGGGGGYGGG
 QQDRGGRGRGGGYNRSGGYEPRGRGGRRGGMGGSDRGGFNKFGGPRDQSRHDEQDNDNNTI
 FVQGLGENVTIESVADYFKQIGI IKTNKKTGQPMINLYTDRETGKLGKGEATVSFDDPPSAKAAIDWFDGK
 EFSGNPIKVSFATRRAFNRGGNGRGGRRGGPMGRGGYGGGSGGGRRGGFPSGGGGGGQQRAGDWK
 CPNPTCENMNF SWRSECNQCKAPKPDGPGGGPGGSHMGGNYGDDRRRGGYDRGGYRGGDRGGFRGGR
 GGGDRGGFGPKMDSRGEHRQDRRERPY

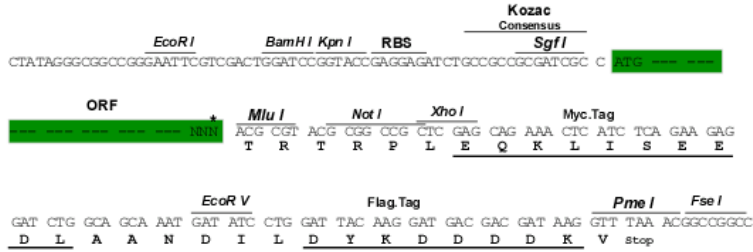
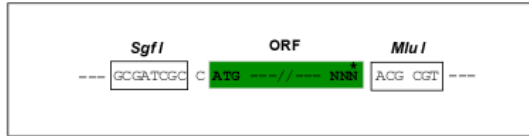
TRTRPLEQKLISEEDLAANDILDYKDDDDKV

Restriction Sites:

SgfI-MluI

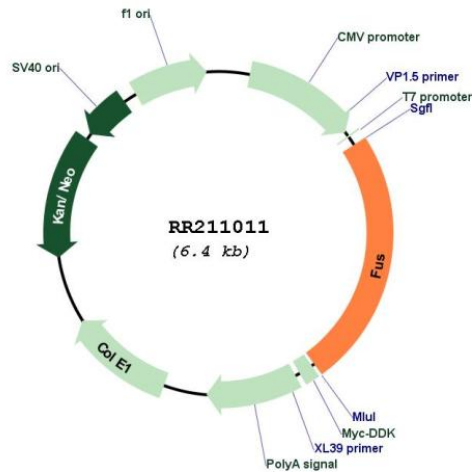
Cloning Scheme:

Cloning sites used for ORF Shutting:



* The last codon before the Stop codon of the ORF

Plasmid Map:



ACCN: NM_001012137

ORF Size: 1554 bp

OTI Disclaimer: The molecular sequence of this clone aligns with the gene accession number as a point of reference only. However, individual transcript sequences of the same gene can differ through naturally occurring variations (e.g. polymorphisms), each with its own valid existence. This clone is substantially in agreement with the reference, but a complete review of all prevailing variants is recommended prior to use. [More info](#)

OTI Annotation: This clone was engineered to express the complete ORF with an expression tag. Expression varies depending on the nature of the gene.

Components: The ORF clone is ion-exchange column purified and shipped in a 2D barcoded Matrix tube containing 10ug of transfection-ready, dried plasmid DNA (reconstitute with 100 ul of water).

Reconstitution Method:

1. Centrifuge at 5,000xg for 5min.
2. Carefully open the tube and add 100ul of sterile water to dissolve the DNA.
3. Close the tube and incubate for 10 minutes at room temperature.
4. Briefly vortex the tube and then do a quick spin (less than 5000xg) to concentrate the liquid at the bottom.
5. Store the suspended plasmid at -20°C. The DNA is stable for at least one year from date of shipping when stored at -20°C.

RefSeq: [NM_001012137.1](#), [NP_001012137.1](#)

RefSeq Size: 1842 bp

RefSeq ORF: 1557 bp

Locus ID: 317385

Cytogenetics: 1q37

MW: 52.7 kDa