

## Product datasheet for **RR210927**

### **Lpcat4 (NM\_001106494) Rat Tagged ORF Clone**

#### **Product data:**

Product Type:	Expression Plasmids
Product Name:	Lpcat4 (NM_001106494) Rat Tagged ORF Clone
Tag:	Myc-DDK
Symbol:	Lpcat4
Synonyms:	Agpat7; RGD1311177
Vector:	pCMV6-Entry (PS100001)
E. coli Selection:	Kanamycin (25 ug/mL)
Cell Selection:	Neomycin



[View online »](#)

**ORF Nucleotide Sequence:**

>RR210927 representing NM\_001106494  
 Red=Cloning site Blue=ORF Green=Tags(s)

TTTTGTAATACGACTCACTATAGGGCGGCCGGGAATTCGTCGACTGGATCCGGTACCGAGGAGATCTGCC  
 GCC**CGGATCGCC**

ATGAGCCAGGGAAGTTCTGGGGCCTGGGCCCCCTCGATCCCACCTCTGGGTCTCTGCCTCTCCAACCC  
 CGTTCGTGCATGAGTTACACCTCTCCGGCTCCAGAGGGTTAAGTTCTGCCTCCTGGGGTACTGCTGGC  
 CCCAATCCGAGTACTTCTAGCTTTTATTGTCTCTTTCTCCTCTGGCCCTTCGCATGGCTCCAAGTAGCA  
 GGTCTCACTGAGGAGCAGCTTCAGGAACCAATTACAGGATGGAGGAAGACTGTATGCCACAACGGCGTTC  
 TTGGTCTGAGCCGCTGCTATTTTTCTGCTTGGCTTCTTCGGATCCGTGTTGGGGTCAAAGGCGCTC  
 TCGTCTTGAGCCCTGTCTGGTTGTGCCCCCACTCAACTTTCTTTGACCAATTGTTCTGCTACCC  
 TGTGACCTGCCAAGGTTGTATCCCGAGCTGAGAATCTTCTGTGCCTGTATCGGAGCCCTTCTCGAT  
 TTAATCAAGCCATCCTAGTATCCCGCATGACCCAGCCTCTCGTCGAGAGTGGTTGAGGAGGTGAGAAG  
 GCGGGCGACCTCGGGAGGCAAGTGGCCTCAGGTAATTTTTCTGAAGGCACCTGTTCCAACAAGAAG  
 GCTCTGCTGAAGTTCAAACCAGGAGCCTTCATCGCTGGGGTGCCTGTCAGCCTGTCTCATCCGATACC  
 CCAACAGTCTGGACACCACAGCTGGGCGTGGAGGGCCCTGGCGTACTCAAAGTCTCTGGCTCACAGC  
 CTCTCAGCCCTGCAGCATCGTGGATGTAGAGTTCTCCCGTCTATCAGCCAGCCAGAGGAGAGTAAG  
 GACCCACCCCTTATGCCAACAACGTCCAGCGAGTCATGGCACAGGCCCTGGGCATTCCGGCTACTGAGT  
 GTGAGTTCGTAGGGAGCTTACCTGTGATCGTGGTGGGCCAGCTGAAGGTAGCGCTGGAACCGCAGCTCTG  
 GGAGCTGGGAAAGGTGCTACAGAAGCCGGGCTGTCCCTGGCTTTGTGGACATGGGGCAGAGCCAGGC  
 CGGAGTCGAATGATCAGCCAAGAGGCATTTGCCAGCAGCTCCAGCTCTCGGATCCCAGACAGTGGCTG  
 GTGCCTCCGCTACTTCCAGCAGGATGCCAAGGTTTGGTGGACTTTCGGAATGTGGCCCTGGCACTAG  
 AGCCCTGGATGGGGCAGGAGCCTGGAGGAGCTGACTCGCTGGCCTTTGAGCTCTTTGCTGAAGAGCAG  
 GCAGAAGAACCTGACCGTCTGCTGTACAAAGATGGCTTACGACCATCCTGCACCTGTTGCTGGGTTTAC  
 CACGCCCTGCTGCCATGACTTTGCATGCCGAGCTGTGCCGGTCTGGATGCAGCCAGGGCCTCTCCCTCTG  
 TCAATTCCAGAATCTCTCTCCATGACCTCTGTACAGCAAGCTTTTCAGCGCCTACCTACGCCCCCA  
 CACAAGCCTCGAAGCACCTCCAGATACCAATGCCTCATCCAGCCCACTGCCCTGGCCAAACGGGACCG  
 TGCAGGCCCCCAAGCAGAAGGGTAC

**ACGCGT**ACGCGGCCGCTCGAGCAGAACTCATCTCAGAAGAGGATCTGGCAGCAAATGATATCTGGATT  
 ACAAGGATGACGACGATAAGGTTTAA

**Protein Sequence:**

>RR210927 representing NM\_001106494  
 Red=Cloning site Green=Tags(s)

MSQGSSGAWAPLDPTSGSSASPFPVHELHLSGLQRVKFCLLVLLAPIRVLLAFIVLFLWPFAWLQVA  
 GLTEEQLEPITGWRKTVCHNGVLGLSRLFFLLGFLRIRVRGQRASRLVLAAPHSTFFDPIVLLP  
 CDLPKVVSRANL SVPVIGALLRFNQA ILVSRHDPASRRRVVEVRRRATSGGKWPQVLFPEGTCSNKK  
 ALLKFKPGAFIAGVPVQPV LIRYPNSLDTTSWAWRGPV LKVLWLTASQPCSIDVVEFLPVYQPSPEESK  
 DPTLYANNVQRVMAQALGIPATECEFFVGS LPVIVVGLKVALEPQLWELGKVLQKAGLSPGFVDMGAEPG  
 RSRMISQEAFAQQLQLSDPQTVAGAFRYFQDAKGLVDFRNVALALAALDGGRSLEELTRLAFELFAEEQ  
 AEEDRLLYKDFSTILHLLGSPRPAAMTLHAELCRSGCSQGLSLCQFQNFSLHDLPLYSKLFSAYLRPP  
 HKPRSTSQIPNASSPTALANGTVQAPKQKGD

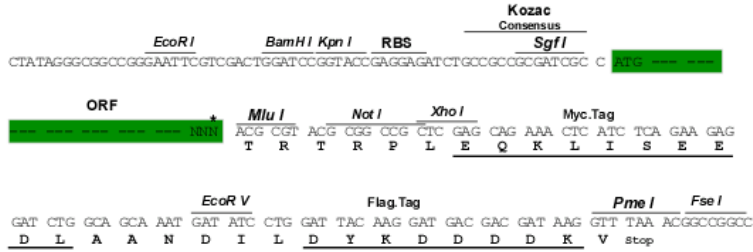
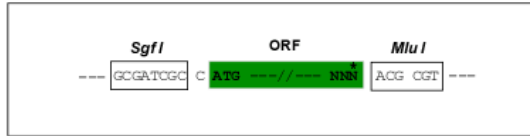
**TR**TRPLEQKLI SEEDLAANDILDYKDDDDKV

**Restriction Sites:**

Sgfl-MluI

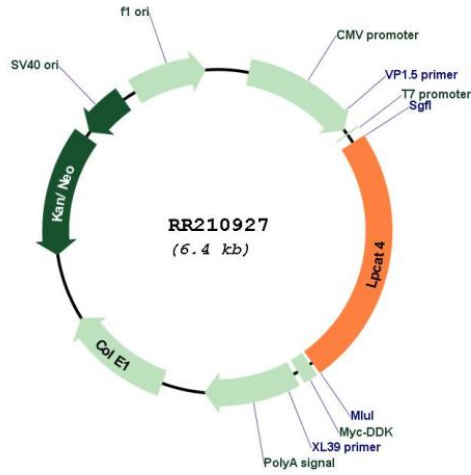
Cloning Scheme:

Cloning sites used for ORF Shuttling:



\* The last codon before the Stop codon of the ORF

Plasmid Map:



<b>ACCN:</b>	NM_001106494
<b>ORF Size:</b>	1566 bp
<b>OTI Disclaimer:</b>	The molecular sequence of this clone aligns with the gene accession number as a point of reference only. However, individual transcript sequences of the same gene can differ through naturally occurring variations (e.g. polymorphisms), each with its own valid existence. This clone is substantially in agreement with the reference, but a complete review of all prevailing variants is recommended prior to use. <a href="#">More info</a>
<b>OTI Annotation:</b>	This clone was engineered to express the complete ORF with an expression tag. Expression varies depending on the nature of the gene.
<b>Components:</b>	The ORF clone is ion-exchange column purified and shipped in a 2D barcoded Matrix tube containing 10ug of transfection-ready, dried plasmid DNA (reconstitute with 100 ul of water).
<b>Reconstitution Method:</b>	<ol style="list-style-type: none"><li>1. Centrifuge at 5,000xg for 5min.</li><li>2. Carefully open the tube and add 100ul of sterile water to dissolve the DNA.</li><li>3. Close the tube and incubate for 10 minutes at room temperature.</li><li>4. Briefly vortex the tube and then do a quick spin (less than 5000xg) to concentrate the liquid at the bottom.</li><li>5. Store the suspended plasmid at -20°C. The DNA is stable for at least one year from date of shipping when stored at -20°C.</li></ol>
<b>RefSeq:</b>	<a href="#">NM_001106494.1</a> , <a href="#">NP_001099964.1</a>
<b>RefSeq Size:</b>	2488 bp
<b>RefSeq ORF:</b>	1569 bp
<b>Locus ID:</b>	296048
<b>Cytogenetics:</b>	3q35
<b>MW:</b>	57.1 kDa