

Product datasheet for **RR210895**

Pspc1 (NM_001025672) Rat Tagged ORF Clone

Product data:

Product Type:	Expression Plasmids
Product Name:	Pspc1 (NM_001025672) Rat Tagged ORF Clone
Tag:	Myc-DDK
Symbol:	Pspc1
Synonyms:	MGC116378
Vector:	pCMV6-Entry (PS100001)
E. coli Selection:	Kanamycin (25 ug/mL)
Cell Selection:	Neomycin



[View online »](#)

ORF Nucleotide Sequence:

>RR210895 representing NM_001025672
 Red=Cloning site Blue=ORF Green=Tags(s)

TTTTGTAATACGACTCACTATAGGGCGGCCGGGAATTCGTCGACTGGATCCGGTACCGAGGAGATCTGCC
 GCC**CGGATCGCC**

ATGATGTTAAGAGAACTGAAGCAAGTACGTATTGAGAAAAATCCGGCTCGCCTTCGCGCCCTGGAGT
 CGGCGGCCGAGAGAGCGAGCCGGTGGCCGCGCGGCCATGGCGCTGACGCTGGCCGGGAGCAGCCGCC
 GCCACCCGCTCCTTCGGAGGAGCACCCGACGAGGAGATGGGCTTACCATTGACATCAAGAGTTTCCTC
 AAGCCCGCGAGAAGACGTACACGCAGCGCTGCCGCTTTCGTGGGTAACCTGCCACCGACATCACGG
 AGGAGGACTTCAAGCGGCTCTTTGAGCGCTACGGCGAGCCAGCGAGTTTTTCATCAACCGCAGCCGAGG
 CTTGCGCTTTCATCCGCTGGAATCCAGAACACTGGCTGAAATTGCAAAAGCAGAGTTGGATGGTACCATA
 CTGAAGAGCAGACCTCTCCGAATTCGTTTGTACACATGGAGCAGCCCTAACAGTCAAGAACCTGTCTC
 CAGTTGTTTCCAATGAGCTTCTAGAGCAAGCATTTTCCAGTTTGGTCCAGTAGAGAAAGCTGTCGTGGT
 TGTGGATGATCGTGGTAGAGCTACAGGAAAAGTTTTGTAGAATTGCAGCGAAACCTCCTGCACGAAAG
 GCTCTGGAGAGATGTGGTATGGGGCTTCTTGCTAACAAACACCTCGTCCAGTCATTGTAGAACCCA
 TGGAGCAGTTTGTATGAAGATGGTTTCCAGAGAAGCTAATGCAGAAAACCAACAGTACCATAAGGA
 AAGAGAACAGCCACCACGGTTTGTCAACCTGGGACATTTGAATTTGAATATGCATCTCGATGGAAGGCT
 CTGGATGAAATGGAGAAGCAGCAGCGTGAACAAGTTGATAGAAACATCAGAGAAGCCAAGGAGAACTGG
 AGGCAGAGATGGAAGCCGCTAGACATGAACACCAGTTAATGCTAATGAGGCAAGATCTAATGAGACGTCA
 AGAAGAACTCAGACGCTTGAAGAAGTCAAGAACTGCAGAAACGAAAGCAAATACAACCTGAGA
 CATGAAGAGGAACATCGTCGTCGTAAGAAGAAATGATCAGACACAGAGAACAGGAGAACTGAGCGGAC
 AGCAGGAGGGCTTTAAACCAAATATATGGAAAATAGAGAACAGGAAATGAGAATGGGTGATAGGGTCC
 CCGTGGAGCAATAAACATGGGAGATGCATTTAGCCAGCACCTGCTGGTACCCAAGGGCCTCCTCCAATG
 ATGGGTATGAATATGAACAACAGAGAACTATACTGGCCACCAATGGGTCCTGGTCTGCCATGGGAC
 CAGAAGGAGCTGCAAATATGGGAACTCCAATGATACCAGATAATGGCGCAGTGCACAATGATAGGTTTCC
 CCAAGGTCCTCCATCCCAAATGGGTTTCGCTATGGGAAACAGAAACAGGTTCTGAAACCCCCAGGCCACA
 ATGAGTGTGTAGGGCTGTGAGTGGTGGTCTGGTGGCTTTGGCAGAGGGAGTCAAGGGGGCAATTTTG
 AAGGCCATAAAGCGTCGGAGATAT

ACGCGTACGCGGCCGCTCGAGCAGAACTCATCTCAGAAGAGGATCTGGCAGCAAATGATATCTGGATT
 ACAAGGATGACGACGATAAGGTTTAA

Protein Sequence:

>RR210895 representing NM_001025672
 Red=Cloning site Green=Tags(s)

MMLRGNLQVRIEKNPARLRALESAAGESEPVAAMALTLAGEQPPPPAPSEHPDEEMGFTIDIKSFL
 KPGEKTYTQRCLFVGNLPTDI TEEDFKRLFERYGEPSEVFINRDRGFGRIRLESRTLAEIAKAELDGTI
 LKSRPLRIRFATHGAALTVKNLSPVVSNELLEQAFSQFGPVEKAVVVVDDRGRATGKGFVEFAAKPPARK
 ALERCGDGAFLLTTTPRPVIVEPMEQFDEDEDLPEKLMQKTQQYHKEREQPPRFAPGTFEFYASRWKA
 LDEMEKQREQVDRNIREAKEKLEAEMEAAARHEHQLMLMRQDLMRRQEELRRLEELRNQELQKRKQIQLR
 HEEEHRRREEEMIRHREQEELRRQEGFKPNYENREQEMRMGDMGPRGAINMGDAFSPAPAGTQGPPPM
 MGMNMNRRGTIPGPPMGPGPAMGPEGAANMGTMPMPDNGAVHNDRFQGGPPSQMGSMPGNRTGSETPQAP
 MSAVGPVSGGPGGFRGSGQGNFEGPNKRRRY

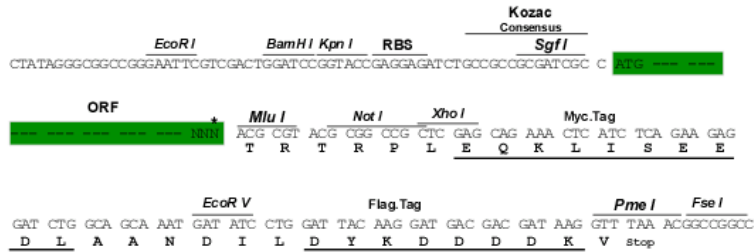
TRTRPLEQKLISEEDLAANDILDYKDDDDKV

Restriction Sites:

Sgfl-MluI

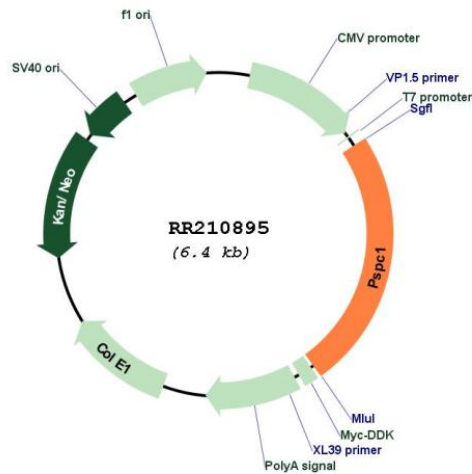
Cloning Scheme:

Cloning sites used for ORF Shuttling:



* The last codon before the Stop codon of the ORF

Plasmid Map:



ACCN:	NM_001025672
ORF Size:	1566 bp
OTI Disclaimer:	The molecular sequence of this clone aligns with the gene accession number as a point of reference only. However, individual transcript sequences of the same gene can differ through naturally occurring variations (e.g. polymorphisms), each with its own valid existence. This clone is substantially in agreement with the reference, but a complete review of all prevailing variants is recommended prior to use. More info
OTI Annotation:	This clone was engineered to express the complete ORF with an expression tag. Expression varies depending on the nature of the gene.
Components:	The ORF clone is ion-exchange column purified and shipped in a 2D barcoded Matrix tube containing 10ug of transfection-ready, dried plasmid DNA (reconstitute with 100 ul of water).
Reconstitution Method:	<ol style="list-style-type: none">1. Centrifuge at 5,000xg for 5min.2. Carefully open the tube and add 100ul of sterile water to dissolve the DNA.3. Close the tube and incubate for 10 minutes at room temperature.4. Briefly vortex the tube and then do a quick spin (less than 5000xg) to concentrate the liquid at the bottom.5. Store the suspended plasmid at -20°C. The DNA is stable for at least one year from date of shipping when stored at -20°C.
RefSeq:	NM_001025672.1 , NP_001020843.1
RefSeq Size:	2034 bp
RefSeq ORF:	1569 bp
Locus ID:	305910
UniProt ID:	Q4KLH4
Cytogenetics:	15p12
MW:	58.8 kDa
Gene Summary:	Together with NONO, required for the formation of nuclear paraspeckles. Regulates, cooperatively with NONO and SFPQ, androgen receptor-mediated gene transcription activity in Sertoli cell line. Binds to poly(A), poly(G) and poly(U) RNA homopolymers. Regulates the circadian clock by repressing the transcriptional activator activity of the CLOCK-ARNTL/BMAL1 heterodimer. Plays a role in the regulation of DNA virus-mediated innate immune response by assembling into the HDP-RNP complex, a complex that serves as a platform for IRF3 phosphorylation and subsequent innate immune response activation through the cGAS-STING pathway.[UniProtKB/Swiss-Prot Function]