

Product datasheet for **RR210888**

Pip4k2c (NM_080480) Rat Tagged ORF Clone

Product data:

Product Type:	Expression Plasmids
Product Name:	Pip4k2c (NM_080480) Rat Tagged ORF Clone
Tag:	Myc-DDK
Symbol:	Pip4k2c
Synonyms:	Pip5k2c
Vector:	pCMV6-Entry (PS100001)
E. coli Selection:	Kanamycin (25 ug/mL)
Cell Selection:	Neomycin
ORF Nucleotide Sequence:	>RR210888 representing NM_080480 Red=Cloning site Blue=ORF Green=Tags(s)

TTTTGTAATACGACTCACTATAGGGCGCCGGAATTCGTCGACTGGATCCGGTACCGAGGAGATCTGCC
GCC**CGGATCGCC**

ATGGCGTCTTCTCCGTCCTCCCGCCACCGCACCCGCGGCAGCTGGAGGCCCGCCCGGGATTCCGGCT
TCGCCTCCAAAACCAAGAAGAAGCATTTTCGTGCAGCAGAAAGTGAAGGTGTTCCGGGCCCGCCACCCACT
GGTGGGCGTGTTCTGTGGGGCGTCGCCACTCGATCAACGAGCTCAGTCAGGTGCCACCCCCAGTGATG
CTGCTGCCAGACGACTTTAAAGCCAGCTCAAGATCAAGGTCAACAATCACCTTTTCCATAGAGAAAATC
TTCCCAGTCATTTCAAGTTCAAGGAGTATTGTCCCCAGGTCTTCAGGAACCTGCGAGATCGGTTTGCCAT
TGATGATCATGATTACTTGGTGTCCCTTACTCGAAGCCCCCAAGCGAAACCGAAGGCAGTGATGGCCGC
TTCCTTATCTCCTATGACCGCACTCTGGTCATCAAGAAGTATCCAGTGAGGACATCGCGGACATGCACA
GCAACCTCTCAATTACCACCAGTACATAGTGAAGTGTACGGCAACACCCTTCTGCCCCAGTTCCTGGG
CATGTACCGGGTCAGTGTAGAAAATGAAGATAGCTATATGCTCGTGATGCGCAATATGTTTAGTCACCGT
CTTCTGTGCATAGGAAGTATGACCTCAAGGGCTCTCTGGTATCCCGGAAGCCAGCGATAAGGAAAAGG
TTAAAGAACTGCCAACACTGAAGGATATGGACTTTCTTAACAAAACAGAAAAGTATATTGGTGAAGA
AGAGAAGAAAGTGTTCCTGGAAGCTGAAGCGAGATGTGGAGTTTCTAGTGCAGCTGAAGATCATGGAC
TACAGCCTTCTACTGGGCATCCACGACATCATTGGGGCTCTGAACCGGAGGAAGAGGGGCTGTGAGGG
AGGAGGAGTCAGAGTGGGATGGGACTGTAACCTGACTGGACCTCCTGCTCTGGTAGGCTCCTATGGCAC
CTCCCCTGAGGGCATTGGAGGCTACATTATTCCACCGGCCCTGGGCCAGGAGATTTGAGTCTTTC
ATCGATGTCTATGCTATCCGGAGTGTGAGGGGGCCCCCAGAAGGAGGTGTATTTTCATGGGCTCATTG
ACATTCTAACACAGTATGATGCCAAGAAGAAAGCAGCTCATGCAGCCAAAACCGTCAAGCATGGGGCAGG
GGCGGAGATCTCCACTGTCCATCCTGAGCAGTACGCTAAGCGATTCTGGATTTTATTTCCAACATCTTT
GCC

ACGCGTACGCGGCCGCTCGAGCAGAAACTCATCTCAGAAGAGGATCTGGCAGCAAATGATATCCTGGATT
ACAAGGATGACGACGATAAGGTTTAA



[View online »](#)

Protein Sequence: >RR210888 representing NM_080480
 Red=Cloning site Green=Tags(s)

MASSSVPPATAPAAAGGPGPGFGFASKTKKKHFVQQKVKVFRAADPLVGVFLWVVAHSINELSQVPPVPM
 LLPDDFKASSKIKVNNHLFHRENLP SHFKFKEYCPQVFRNLDRFAIDDHDYL VSL TRSPPSETEGSDGR
 FLISYDRTLVIKEVSSEDIADMHSNLSNYHQYIVKCHGNTLLPQFLGMYRVSVENEDSYMLVMRNMFSHR
 LPVHRKYDLKGSLSVREASDKEKVKELPTLKDMDFLNKNQKVYIGEEKKVFLEKLKRDFEFLVQLKIMD
 YSLLLGIHDIIRGSEPEEEGPGVREEESEWDGDCNLTGPPALVGSYGT SPEGIGGYIHSRPLGPGEFESF
 IDVYAIRSAEGAPQKEVYFMGLIDILTQYDAKKKAAHAAKTVKHGAGAEISTVHPEQYAKRFLDFISNIF
 A

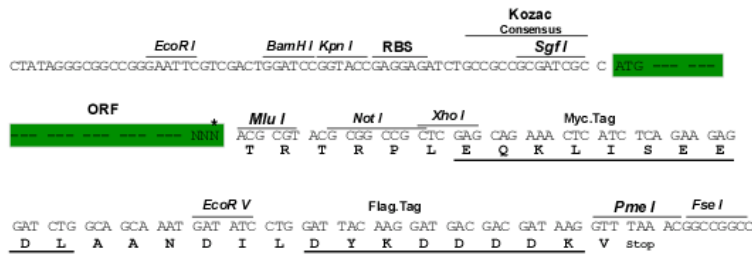
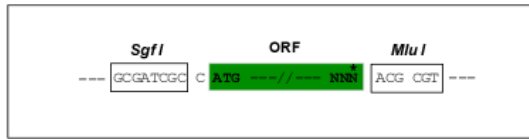
TRTRPLEQKLISEEDLAANDILDYKDDDDKV

Restriction Sites:

Sgfl-MluI

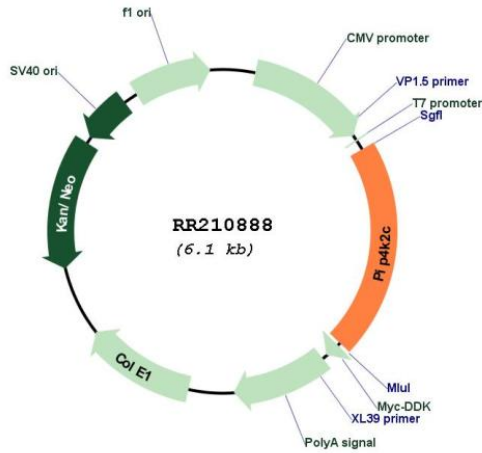
Cloning Scheme:

Cloning sites used for ORF Shuttling:



* The last codon before the Stop codon of the ORF

Plasmid Map:



ACCN:

NM_080480

ORF Size:	1263 bp
OTI Disclaimer:	The molecular sequence of this clone aligns with the gene accession number as a point of reference only. However, individual transcript sequences of the same gene can differ through naturally occurring variations (e.g. polymorphisms), each with its own valid existence. This clone is substantially in agreement with the reference, but a complete review of all prevailing variants is recommended prior to use. More info
OTI Annotation:	This clone was engineered to express the complete ORF with an expression tag. Expression varies depending on the nature of the gene.
Components:	The ORF clone is ion-exchange column purified and shipped in a 2D barcoded Matrix tube containing 10ug of transfection-ready, dried plasmid DNA (reconstitute with 100 ul of water).
Reconstitution Method:	<ol style="list-style-type: none">1. Centrifuge at 5,000xg for 5min.2. Carefully open the tube and add 100ul of sterile water to dissolve the DNA.3. Close the tube and incubate for 10 minutes at room temperature.4. Briefly vortex the tube and then do a quick spin (less than 5000xg) to concentrate the liquid at the bottom.5. Store the suspended plasmid at -20°C. The DNA is stable for at least one year from date of shipping when stored at -20°C.
RefSeq:	NM_080480.2 , NP_536728.2
RefSeq Size:	3194 bp
RefSeq ORF:	1266 bp
Locus ID:	140607
UniProt ID:	O88370
Cytogenetics:	7q22
MW:	47.3 kDa
Gene Summary:	may play a role in phosphatidylinositol bisphosphate synthesis in the endoplasmic reticulum; has similarity to phosphatidylinositol 5-phosphate 4-kinase IIalpha and IIbeta isoforms [RGD, Feb 2006]