

Product datasheet for **RR210877**

Hmgcs1 (NM_017268) Rat Tagged ORF Clone

Product data:

Product Type:	Expression Plasmids
Product Name:	Hmgcs1 (NM_017268) Rat Tagged ORF Clone
Tag:	Myc-DDK
Symbol:	Hmgcs1
Mammalian Cell Selection:	Neomycin
Vector:	pCMV6-Entry (PS100001)
E. coli Selection:	Kanamycin (25 ug/mL)



[View online »](#)

ORF Nucleotide Sequence:

>RR210877 representing NM_017268
 Red=Cloning site Blue=ORF Green=Tags(s)

TTTTGTAATACGACTCACTATAGGGCGGCCGGAATTCGTCGACTGGATCCGGTACCGAGGAGATCTGCC
 GCC**CGCATCGCC**

ATGCCTGGGTCACTTCCTTTGAATGCAGAGGCTTCTGCGCCAAAAGATGTGGGAATCGTTGCCCTTGAAA
 TCTACTTTCTCTCAGTATGTTGATCAAGCTGAGTTGGAAAAATACGATGGTGTAGATCGTGGAAAGTA
 TACCATTGGCCTGGGCCAGGCCAGGATGGGCTTCTGCACGGATCGCAAGACATCAACTCTCTCGCCTG
 ACTGTGGTTCAGAACTGATGGAGAGAAAAGCCTTCTATGACTGCATTGGGCGGCTGGAAAGTCGGGA
 CAGAGACAATCATCGACAAATCAAAATCCGTGAAGTCTAATTTGATGCAGCTGTTTGAGGAGTCTGGGAA
 TACAGATATAGAAGGAATAGATACAATAATGCATGCTATGGGGGCACAGCCGAGTCTTCAATGCTGTG
 AACTGGATCGAATCCAGCTCTTGGGATGGACGATACGCTTTGGTAGTTGCAGGAGACATCGCTATATATG
 CCTCAGGAAACGCCAGGCTACAGGTGGAGTTGGAGCTGTGGCTCTGCTAATTGGCCAAATGCTCCTGT
 AATTTTTGACCGAGGGCTTCGTGGGACACACATGCAGCATGCCTACGACTTTTACAAGCCTGACATGCTC
 TCTGAATACCCTGTGGTAGATGGAAAATCTCCATACAGTGTACCTCAGCGCATTGGACCCTGCTATT
 CTGTCTACCGCAAAAAGATCCGGGCCAGTGGCAGAAAAGAGGAAAGGATAAAGATTTTACCCTGAATGA
 TTTTGGCTTATGATCTTCACTCGCCATACTGTAAGTGGTGCAGAAATCTCTAGCTAGGATGTTCTCTG
 AATGACTTTCTTAACGATCAAAACAGAGACAAAAACAGTATTTACAGTGGGCTGGAAGCCTTTGGGGATG
 TGAAATTAGAAGATACTTACTTCGACAGAGATGTGAAAAGGCATTTATGAAGGCTAGTGTGAGCTATT
 CAACCAGAAAACAAGGCATCTTTGCTTGTATCGAATCAAAATGGAAACATGTACACATCCTCTGTATAC
 GGTTCCCTTGTCTGTCTGGCACAGTACTCACCTCAACAGTTGGCCGGGAAGAGGATTTGGAGTGTCT
 CTTACGGTCTGGCTTGGCTGCCACACTCTACCTCCCTTAAAGTCACACAAGATGCCACACCAGGATCTGC
 TCTTGACAAAATAACAGCAAGTTTATGTGACCTTAAGTCAAGGCTTGACTCAAGAACGTGTGTGGCACC
 GACGCTTTTGTGAAAACATGAAGCTCAGAGAGGACACACATCACTTAGCCAATATATCCCCAGTGT
 CAATAGATCACTCTTCGAAGGAACATGGTATCTAGTCAGAGTGGATGAAAAGCAGAGAAGAACTTACGC
 CCGGCTCCCTCCACAAATGACCACAGTTTGGATGAAGGAGTGGGACTTGTGCATTCAAACACAGCTACA
 GAGCATATCCAAGCCCGGCTAAGAAAGTGCCAAGACTTCTGCGACCTCGGGCGAACCTGAGTCGGCTG
 TCATCAGTAACGGGGAGCAC

ACGCGTACGCGGCCGCTCGAGCAGAAACTCATCTCAGAAGAGGATCTGGCAGCAAATGATATCCTGGATT
 ACAAGGATGACGACGATAAGGTTTAA

Protein Sequence:

>RR210877 representing NM_017268
 Red=Cloning site Green=Tags(s)

MPGSLPLNAEACWPKDVGIVALEIYFPSQYVDQAELEKYDGVDAKTYIGLGQARMGFCTDREDINSLCL
 TVVQKLMERNLSYDCIGRLEVGTETIIDKSKSVKSNLMQLFEESGNTDIEGIDTTNACYGGTAAVFNVA
 NWIESSWDGRYALVVAGDIAIYASGNARPTGGVGAVALLIGPNAPVIFDRGLRGTHMQHAYDFYKPDML
 SEYPVVDGKLSIQCYLSALDRYSVYRKKIRAQWQKEGDKDFTLNDFGFMIFHSPYCKLVQKSLARMFL
 NDFLNDQNRDKNSIYSGLEAFGDVKLEDTYFDRDVEKAFMKASAELEFNQTKASLLVSNQNGNMYTSSVY
 GSLASVLAQYSPQQLAGKRIGVFSYGSGLAATLYSLKVTQDAPGSALDKITASLCDLKSRLDSRTCVPAP
 DVFAENMKLREDTHHLANYIPQCSIDSLFEGTWYLRVDEKHRRTYARRPSTNDHSLDEGVGLVHSNTAT
 EHIPSPAKKVPRLPATSGEPESAVISNGEH

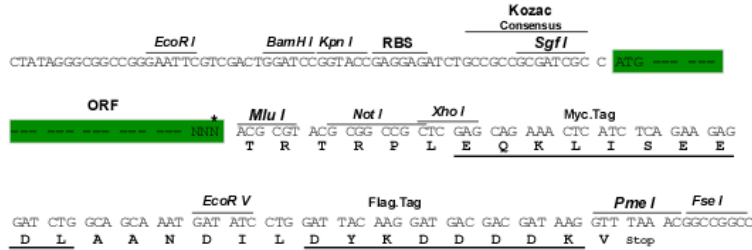
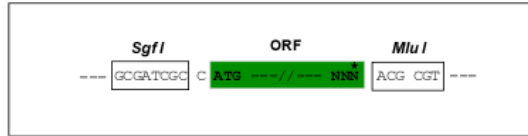
TRTRPLEQKLISEEDLAANDILDYKDDDDKV

Restriction Sites:

Sgfl-MluI

Cloning Scheme:

Cloning sites used for ORF Shuttling:



* The last codon before the Stop codon of the ORF

ACCN: NM_017268

ORF Size: 1560 bp

OTI Disclaimer: The molecular sequence of this clone aligns with the gene accession number as a point of reference only. However, individual transcript sequences of the same gene can differ through naturally occurring variations (e.g. polymorphisms), each with its own valid existence. This clone is substantially in agreement with the reference, but a complete review of all prevailing variants is recommended prior to use. [More info](#)

OTI Annotation: This clone was engineered to express the complete ORF with an expression tag. Expression varies depending on the nature of the gene.

Components: The ORF clone is ion-exchange column purified and shipped in a 2D barcoded Matrix tube containing 10ug of transfection-ready, dried plasmid DNA (reconstitute with 100 ul of water).

Reconstitution Method:

1. Centrifuge at 5,000xg for 5min.
2. Carefully open the tube and add 100ul of sterile water to dissolve the DNA.
3. Close the tube and incubate for 10 minutes at room temperature.
4. Briefly vortex the tube and then do a quick spin (less than 5000xg) to concentrate the liquid at the bottom.
5. Store the suspended plasmid at -20°C. The DNA is stable for at least one year from date of shipping when stored at -20°C.

RefSeq: [NM_017268.1](#), [NP_058964.1](#)
RefSeq Size: 3275 bp

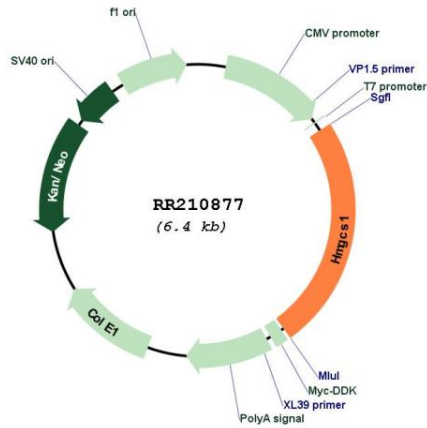
RefSeq ORF: 1563 bp

Locus ID: 29637

UniProt ID: [P17425](#)

Cytogenetics: 2q15
MW: 57.4 kDa
Gene Summary: catalyzes the conversion of (S)-3-hydroxy-3-methylglutaryl-CoA and CoA to acetyl-CoA, acetoacetyl-CoA, and H2O [RGD, Feb 2006]

Product images:



Circular map for RR210877