

## Product datasheet for **RR210833**

### Fam53b (NM\_001107556) Rat Tagged ORF Clone

#### Product data:

**Product Type:** Expression Plasmids  
**Product Name:** Fam53b (NM\_001107556) Rat Tagged ORF Clone  
**Tag:** Myc-DDK  
**Symbol:** Fam53b  
**Synonyms:** RGD1310799  
**Vector:** pCMV6-Entry (PS100001)  
**E. coli Selection:** Kanamycin (25 ug/mL)  
**Cell Selection:** Neomycin  
**ORF Nucleotide Sequence:** >RR210833 representing NM\_001107556  
Red=Cloning site Blue=ORF Green=Tags(s)

TTTTGTAATACGACTCACTATAGGGCGGCCGGAATTCGTCGACTGGATCCGGTACCGAGGAGATCTGCC  
GCC**CGGATCGCC**

ATGGTGATGATCCTAAGGAGAAGCCTCATCAACCAGGGAGCTGACTCTGTAGCACACAGGACCTTCATCC  
CTGAATGCACACGCCAAAGATGAGTCAAGGACCTACCCTCCTCTCTGCGGAATTATGGAAAATGACAG  
ATGGCGAGACCTGGATAGAAAATGCCCTCTCAGATTGACCAGCCAAGCGCCAGCATCTGGGAATGTCTG  
CCTGAAAAGTGTGAGGATGGCTCTCTGTGGCACCAGGAGCGGTGACTGCCTGTGCAGTGACCAGTCTAA  
TCAAAGACCTCAACATAAATGACCACAATGGGAACCCCTCAGCTCCTCCAGTAAACGCCAGTGCCGGTC  
ACTATCCTTCTCTGATGAGATGTCCAGTTGCCGGACGTATGGCGGCCCTTGGGGTCCAAAGTCTGGACT  
CCCGTGGAGAAGAGACGATGCTACAGCGGAGGCAGTGTCCAGCGCTACTCCAATGGTGTCCAGCCCATGC  
AGCGGAGCTCTAGCTTCAGCCTCCCTGCCCGGGCTAATGGGCTCTTTCACCTTGCACCCAGTCAAGCCT  
GCACCACCGCTTGGGGGACAACCCTGCCGAGGAGCGCCAGGCTCCGCCCTTGTGGCGGGTGGGGGAT  
AGCTGGAGCCCAGACCCACACCCTGTGGGAGGGGCGGCTGGACCTGCAAAGTCTCTCTCCTGCTCAC  
ATGAGCAGTTTTCTTCCAGAATACTGTCCCCCTCAGCCAACAGCACACCTGCCTCAACGCCAGAGCT  
GGCAAGACGCTCCAGTGGGCTTGCCTGAGCCGCTCCAGCCGTGTGCTTAATGACAAGAAGATCGGT  
GTGAAACGGCGGCGTCCAGACGAAGTGCAGGAGCAAAGACCTTCGCTAGACCTTGCCAAGATGGCACAGA  
ACTGTGACACCTCAGCAGCCTCAGTTGCCTGAACATGGGGTGGACGAGCACAGCTCTCAGAGCCCTT  
TGCCCTCGTCAGCAGTACCCGATCCTGGACCGCATTGCTCTCAGCCTCCAGCCAGGGGGCAGGACTCCC  
GCTGGGACCCAGTTCCTGAGCCTGTCCGGAGCCTGTCCCCACTCCTTTGATGACCAGTTTACGGGCC  
AGGAGGACCTATCCTGTGATGAGTCAGATGGCTGCAGTCTGGATGAGGATTGCTGCAGGAAGGGGGAGCC  
GGCCACAGCCTGGCGGGACAGGGAGCCTGCAGGAACAGCCTCTGCTCTCTGGACGGCGAGCTGGACATT  
GAGCAGATAGAGAACAAC

**ACGCGT**ACGCGGCCGCTCGAGCAGAACTCATCTCAGAAGAGGATCTGGCAGCAAATGATATCCTGGATT  
ACAAGGATGACGACGATAAGGTTTAA



**Protein Sequence:** >RR210833 representing NM\_001107556  
 Red=Cloning site Green=Tags(s)

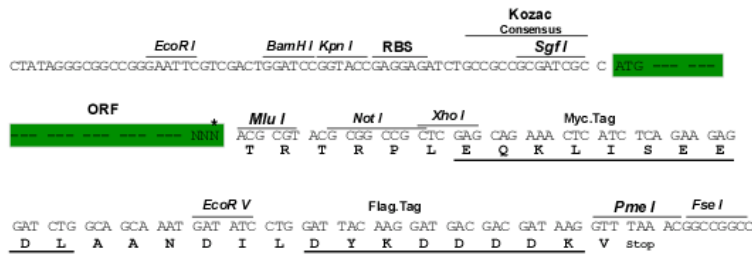
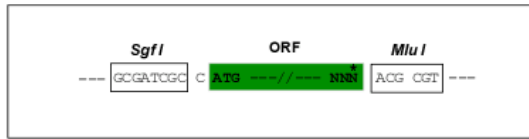
MVMILRRSLINQGADSVAHRTFIPELHTPKMSQGPTLLSCGIMENDRWRDLDRKCPLQIDQPSASIWECL  
 PEKCQDGLSLWHQEAVTACAVTSLIKDLNINDHNGNPSAPPSKRQCRSLSFDEMSSCRTSWRPLGSKVWT  
 PVEKRRCSYSGGSVQRYSNVSPMQRSSFSLPARANGLSSPCHQSSLHHRFGGQPCRGAPGSAPCGRVGD  
 SWSPDPHPVGGRLDLQRSLSCSHEQFSFPEYCPPSANSTPASTPELARSSGLARSRSQPCVLNDKKIG  
 VKRRRPDEVQEQRPSLDLAKMAQNCQTFSSLSCLNMGVDEHSSQSPFALVSSTRSWTALLSASSPGGRTP  
 AGTPVPEPVPEPVPHSFDDQFTGQEDLSCDESDGCSLDEDCRKGEPATAWRDRGACRNSLCSLDGELDI  
 EQIENN

TRTRPLEQKLISEEDLAANDILDYKDDDDKV

**Restriction Sites:**  
**Cloning Scheme:**

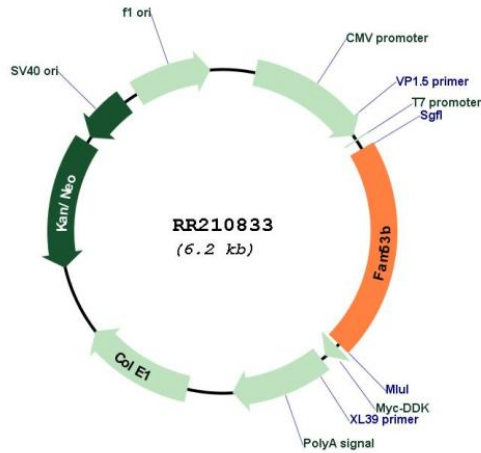
SgfI-MluI

Cloning sites used for ORF Shuttling:



\* The last codon before the Stop codon of the ORF

**Plasmid Map:**



**ACCN:** NM\_001107556

<b>ORF Size:</b>	1278 bp
<b>OTI Disclaimer:</b>	The molecular sequence of this clone aligns with the gene accession number as a point of reference only. However, individual transcript sequences of the same gene can differ through naturally occurring variations (e.g. polymorphisms), each with its own valid existence. This clone is substantially in agreement with the reference, but a complete review of all prevailing variants is recommended prior to use. <a href="#">More info</a>
<b>OTI Annotation:</b>	This clone was engineered to express the complete ORF with an expression tag. Expression varies depending on the nature of the gene.
<b>Components:</b>	The ORF clone is ion-exchange column purified and shipped in a 2D barcoded Matrix tube containing 10ug of transfection-ready, dried plasmid DNA (reconstitute with 100 ul of water).
<b>Reconstitution Method:</b>	<ol style="list-style-type: none"><li>1. Centrifuge at 5,000xg for 5min.</li><li>2. Carefully open the tube and add 100ul of sterile water to dissolve the DNA.</li><li>3. Close the tube and incubate for 10 minutes at room temperature.</li><li>4. Briefly vortex the tube and then do a quick spin (less than 5000xg) to concentrate the liquid at the bottom.</li><li>5. Store the suspended plasmid at -20°C. The DNA is stable for at least one year from date of shipping when stored at -20°C.</li></ol>
<b>RefSeq:</b>	<a href="#">NM_001107556.1</a> , <a href="#">NP_001101026.1</a>
<b>RefSeq Size:</b>	5250 bp
<b>RefSeq ORF:</b>	1281 bp
<b>Locus ID:</b>	309060
<b>Cytogenetics:</b>	1q41
<b>MW:</b>	46.5 kDa