

Product datasheet for RR210745

Ros1 (NM_012874) Rat Tagged ORF Clone

Product data:

Product Type:	Expression Plasmids
Product Name:	Ros1 (NM_012874) Rat Tagged ORF Clone
Tag:	Myc-DDK
Symbol:	Ros1
Synonyms:	ROS1C
Vector:	pCMV6-Entry (PS100001)
E. coli Selection:	Kanamycin (25 ug/mL)
Cell Selection:	Neomycin
ORF Nucleotide Sequence:	>RR210745 representing NM_012874 Red=Cloning site Blue=ORF Green=Tags(s)

TTTTGTAATACGACTCACTATAGGGCGGCCGGAATTCGTCGACTGGATCCGGTACCGAGGAGATCTGCC
GCC**CGGATCGCC**

ATGAAGAGGATCCGCTGGCTCACCCAAAACCTGCGACCTTTGTGGTCCTGGGTGCGTATGGATTTCCG
TGGCGCAGGGTACCATTCTGAGCAGCTGCCTAACGTCTGTGTAACCTTGGGCAGGCAGCTTGACAG
CGGCACCCGGTACAATCTGAGTGAGGCATGCATCCAAGGATGTCAAGTTTGGAACTCTATAGATCAGGAG
AAGTGTGCTTTGAAGTGAATGATACATATGTCACCATTTGTGAGAGGGAGTCTGTGAGGTCGGCTGCA
GCAACCGGGAGGGTAGCTACGAAGAGGAAGTGCTGGACAACACAGAGCTTCTACAGCACCTTCGCATC
TTCCATTGGAAGTAACGGGGTGACATTACGATGGAACCTGCCAACATCTCTGGAGTAAAATACATCATT
CAGTGGAAATATGCCCAACTTCCGGGAAGCTGGGCTTACACAGAAACTGTGTCTAAGCTCTCATAATGG
TGAACCCCTGCATCCATTTACTGAATATATTTTCGAGTGGTTTGGATTTTACAGCCCAGCTGCACCT
TTATCCCCGCCAAGTCCCAGTTACAGGACTCATCCTTATGGAGTCCAGAACTGCGCCTTTATCAGC
AACATCGAAAGCTCGAGCCCTGACACTGTGGAGTCAAGTGGCTCCACCCTATTTCCAGGTGGACCTA
TTTTGGTTATAATTTAAGGCTGATCAGTAAAACCTCAAAATAGATTTCAGGGACACAGAAACCAAGTT
CCAGTTTTATTCTACTCTTCCAAACACCCTTACAGTTTTCTATCGCAGCAGTCAATGAAGTCGGTGAG
GGCCAGAAAGCAGAATCTATGATTACCACTCCATCCCCAGCAGTCAAGAAGAAGAACAATGGCTTTTT
TATCCAGAAAACTTCTCTAAGAAAGAGGTCTTTGAAGTACTTAGTAGACGAAGCACATTGCCTTTGGTC
AGATGCTATACGTCATAATATTACAGGAATATCAGTCAACACTCAGCAGGAAGTGGTTTATTTCTCAGAA
GGAACCATCATATGGATGAAGGGGGCTGCTAACATGTCTGATGTGTCTGACCTGAGGATCTTTTATCGAG
GCTCAGCTCTAGTCTTCTATCTCTGTAGACTGGCTTTACCAAAGGATGATTTTCATCATGGATAATCG
GGTGCATGTCTGTGACTTAAAGCATTGCTCAAATCTTGAGGAAATCACTCCATTCTATTGTTGCACCT
CAAAAAGTTGTGGTTGATTCCTACAATGGGTATGTCTTTATCTCCTAAGAGACGGCATTATAGAGTCC
ATCTTCTTTGCGTCTGTCAAGGACACCAAAGCTGTGCGTATTGTGGAGAGTGGCACATTAAGGACTT
CGCAGTAAAGCCGAGTCCAAGCGAATCATTTACTTCAATGGCACCATGCAAGTCTTCATGTGACATTT
CTGGATGGCTCGGCATCCACAGGGTTCTGCCGTGGTCCCCCTTGGGATGTGAAGAGCTTTGCTTGTG



[View online »](#)

AAAACAATGACTTCCTCATCACAGATGGCAAGGCCATTTTCCAACAGGACTCTCTGTCTTTCAATGAGTT
 CATCGTGGGATGTGACCTGAGTCACATAGAAGAATTTGGGTTTGGTAACCTGGTCATCTTTGGCTCCTCC
 GTCCAGTCGTACCCTCTGCCAGGCCATCCACAGGAGGTCTCGGTGCTGTTTGGTTCTCGAGAGGCCCTTA
 TTCAGTGGAAAGCCTCCGATTCTCGCCATAGGAGCCAGTCTTCCGCCTGGCAGAACTGGACTTATGAGGT
 CAAAGTTTCTCCAGGACATTTGAAACCACTCAAGTTTTCTGAACATAAGCAGGACTGTGCTGAAT
 GTACCCAAGCTGCAAAGTTCTACAAAGTACATGGTGTCTGTGCGAGCAAGTTCCTAAAGGCCAGGCC
 CATGGTCAGAACCCCTCAGTGGTACTACCTTGGTACCAGCCACTGAGCCACCGTTCATCATGGCTGTGAA
 AGAAGATGGGCTTTGGAGCAAACCACTCAGTAGTTTTGGCCAGGAGAGTTCCTATCCTCTGACGTAGGA
 AACGTGTCAGATATGGATTGGTATAACAACAGCCTCTACTACAGTGACACAAAAGGCAATGTGTATGTGC
 GCCTCTGAATGGGATGGATATCTCGGAGAATTACCACATATCCAGCATTGCAGGAGCTTGTGCCTTGGC
 CTTTGAATGGCTGGGTCACCTTCTACTGGGCTGGGAAGACATATGTGATTCAAAGGCAGTCTGTGTTA
 ACGGGACACACAGACATTGTGACTCACGTGAAGCTGTTGGTGAATGACATGGCCGTGGATCCAGTTGGT
 GCTATCTGTACTGGACGACGCTCTACTCGGTTGAAAGCACCAGACTCAATGGAGAAAGTTCTCTTGTACT
 ACAGGCTCAGCCCTGGCTCTCTGAAAAAAGGTTATTGCTTAACATTAGACCTCAGCGATGGGCTCCTG
 TACTGGCTGGTGCAGGACAATCAGTGTATTCACCTGTACACGGCTGTTCTCCGGGATGGAGTGGTGGC
 ATGCTACCATCACCGAGTTTGCAGCCTGGAGTACTTCTGAAATTTCCAGAAATGCACTGATGACTACAG
 CGGTAGACTCTTCTGGATCAATGGCTTTAGGATCATCACAGCACAGGAAATAGGTCAGAGAACAGCGTG
 TCTGTTTCTGAGCCAGGGAAATCAATCAGTTTACGATCATACAGACATCCCTCAAGCCTCTGCCAGGGA
 ACTTTTCTCTACTCCCAGGTTATCCCAGATTCTGTTCCAGGAGTCTCTATTTGAAATGAAGGACACAC
 TTCAAGTTTCCGAATCCTGTGGAATGAGCCCCCTGCGGTGGACTGGGGCATAAGTTTTCTACAGTGTGAA
 TTTAGTGCTCATTCTAAGTTCCTGGCTATTGAACAACAGTCTTTACCTGTTTTACTGTGGAAGGACTGG
 AGCCCTATGCCTATTTAATCTTCTGTCACTCCTTATACCTATTGGGGAAAAGGTCAAAAAACATCTCT
 ATCATTTCGAGCGCTGAATCAGTTCGTCAGCACAGAGAACCCAGAAATTTATATTGTCACTTGGGA
 AGATACACCAGGAAGAATGAAGTCGTGGTAGAGTTTAGGTGGAATAAACCTAAGCATGAAAATGGAGTGC
 TAACCAATCTGAAATCTTCTACCACATATCTAAACAAAGTGGCACAATAAATCAACGGAAGACTGGGT
 ATCTGTACAGCTTACACCGCCGGTATGTCTTTCAACTGAAGCCATGAGTCTGGGTATATTGTTTCC
 TTCCAGGTTGAGTCTTACCTCCAAAGGGCCAGGACATTTTCTGATATAGTGTGCTAAAACATCAG
 AAATCAAGCCATGTCCATATCTCATATCTTCTTGGCAATAAGATTGAGTCTTAGACATGGACAAAA
 TCAAGTTGTGGACATTTCCCTGGAGGGAGCCGTGAGCACAGTGGGTACACAGCGGATGATGAAATG
 GGGATTTGCTCAAGGAGATGCACTCTCCTTCTGAATTTGCACAATCATTCCAGCTCCAAGCTTTTCC
 AGGACGTGCTGGCTTCTGACATTGGGTTATTGCTGTTGACTGGATCGCAAGGCACCTCTACTTTGCTCT
 GAAAGCATCGCAAGATGGAACACAGATATTCGATGTTGACCTTGAACACAAGGTGAAATCCCCCAGGGAG
 GTGAAGATTTGAAAAGCCATACAGCAATAATTTCTTCTATGTATCCCTCTTAAGTCGCCTGTATT
 GGACAGAAGTTTTCAGATCTGGGCTACCAGATGTTCTACTGCAATATTAGCAGTCACACCTTGATCACGT
 TCTACAACCAAGGCCTCAAACAGCATGGAAGGAGACAGTGTCTTGTAAATGTGACAGAATCCGAGTTA
 AGTGGGGCAATGACTGTGGACACGTCTGATCCAGACAGACCTGGATATACTTTACCAACAGCAAGAGA
 TCTGGGCCATGGATCTGGAAGGATGTGAGTGTGGAAAGTCATCATGGTACCTGCTACCCCTGAAAAAG
 AATCATTAGTTTAAACAGTGGATGGGAGTTTATATATTGGATCACAACAATGAAGGACGACACAGAAAT
 TATCAAGCAAAGAAGGGAAGTGGGGCCATCCTCTCCAGGTGAAGGCCCCAGGAGTAAGCATATCTTGG
 CTTACAGTTCAGCTCTGCAACCTTTCCAGATAAAGCATATCTGTCTGTAGCTTCCAATATGGTAGAAGC
 AAGTATATTGAATGCCACCAACACCAGCCTCATTCTCAAGTTACCTCCAGTCAAGACAAAACCTCAGTGG
 CATGGAATTACCACTCCCACGTCAACATACCTGGTTTACTATATGGAGGCTAATAGGGCAACAGCTCTG
 ACAGGAAACACAACATGTTGGAATCACAGGAGAATGTAGCCCGGATTGAAGGTCTGCAGCCATTTTCAAC
 ATACGTGATTGATAGCTGTGAAGAACTATTATTCTGATCCTTTAGAACATCTCTCTGGGAAAAAGAG
 ATTCAAGGAAAAACTAAAAGTGGAGTGGCCGGGAGTTTGTGATCAATGCAACTGTGCTGTGCGGACA
 CCAGTCTTCTGTATTCTGGACAGAATCGCATAAACCAACGGACCCAAAGAGTTAGTCCGCTATCAGTT
 GGTATGTCATACCTGGCTCCGATTCTGAGACTCCTTAAGACAGGACGAATTTCCAAGGCCAGGCTT
 TCTCTACTTGTCACTAACTCTCTGGTGGACAACAATATGTGCTGAAGATCCTTGCTGCCACTCAGAGG
 AAATGTGGTGTACTGAGAGTCATCCTGTGAGTGTCAACATGTTTACACACCCGGAGAAAACCTTCTGCCTT
 GGTCCAGAGAACTAGTCTGCTGTTGGATTGGAAGGCTCCGTCTAACGCTAACCTCACCAGATTTTGG
 TTTGAACTCCAGAAGTGGAAAGTATAGTGAGTTTTACCATGTCAAGGCTTCATGCAGCCAAGGTCCAGTTT
 ATGCTGTAACATCGAAATCTGCAGCCTTACACTCCTTAAACATCCGAGTGGTGGTGTCTATACGAC

AGGAGAAAATAGCTCCTCGATTCCCAGAGCTTCAAGACAAAAGCTGGAGTCCCAAGCAAACCAGGGATT
CCTAAGTTACTAGAAGGGAGTAAAAATTCATCCAGTGGGAAAAAGCCGAAGATAACGGGAACAGATTGA
TGTAACACACCCTGGAGGTGAGAAAAAGCATTTCAAATGACTCACGGGACCAGAGTTTAAGGTGGACGGC
GGTGTTTAATGGTCTCGAGTAGCATTGACATGGAGGTCAAAAAACCTAAAAGGAACTTCCAGTTC
AGAGCAGTAGCGTCAAATGCTATTGGATTTGGAGAATACAGTGAATCAGTGAAGATATTACATTAGTGG
AAGATGGTTTTTGGATAACAGAAAACAAGTTTTATACTTACTATCATAGTTGGGATATTTCTGGTTGCCAC
AGTCCCCTGACCTTTGTCTGGCATAGAAGCTTGAAAAACCACAAAGCTACCAAGGAAGGCCTCTCAGTT
CTCAACGACAATGACCAAGAGTTGGCTGAGCTTCGAGGACTGGCGCTGGAGTGGGCTGGCCAATGCCT
GCTATGCAGTACATACTCTTCCAACCAAGAGGAGATTGAAAGTCTTCCCGCCTTCCCTCGGAGAAAGCT
GAGCCTGCGCCTTCTGTTGGGAAGTGGAGCTTTTGGAGAAGTGTACGAGGGCACAGCTGTAGACATCCTA
GGACGGGGAAGTGGAGAAATCAAGGTGGCCGTGAAGACCCTGAAGAAAGTTTCGACAGACCAGGAGAAGA
TCGAGTTCCTGAAGGAGGCACACCTGATGAGCAAGTTAATCACCCCAACATTCTGAAGCAGCTGGGAGT
CTGTCTGTGAGTGAACCCAGTACATTATCCTGGAAGTATGGAAGGGGAGACCTTCTAAGCTATCTG
CGCAAAGCCCAGGGACAACGTTGTCTGGCCCTTACTCACATTGGCTGACCTGGTAGAGCTGTGTGTAG
ATATTTCAAAGGCTGCGTCTACTTGGAGCAGATGCATTCATTACAGGGATCTGGCAGCTCGGAATTG
CCTTGTGTCTGTGAAAGACTATACCAGTCTCGGGTAGTCAAGATCGGTGACTTTGGTTTGGCAAGGGAA
ATCTATAAGCATGATTATTATAGAAAGAGAGGGGAAGGCCTGCTTCTGTCCGGTGGATGGCTCCTGAAA
ACTTGATGGATGGAATCTTCACTTCCCAGTCTGATGTATGGTCTTTTGAATTTTGGTTTGGGAGATTTT
AACTCTTGGTCATCAACCTTATCCAGCGCATTCCAACCTTGATGTTTTAACTATGTGCAAGCAGGAGGG
AGACTGGAGCCACCGAGAAACTGTCCTGATGATCTGTGGAATTTAATGTTCCGATGTTGGGCCAAGAAC
CTGACCAAAGACCCACTTCTATAACATTCAAGACCAGCTTCAGTTATTCAGAAATGTTTCTTAAACAA
TGTTTCTCACTGTGGACAAGCAGCTCCTGCTGGTGGAGTCATCAACAAAGGCTTTGAAGTGAAGACAAT
GAAATGGCCACTTTGAATTCAGATGACACGATGCCAGTTGCCTTGATGGAACCAAGCAAGCAAGAGGAT
TAAATTATATGGTACTTGCACAAAGTGTAGCCAAAGTGAAGATCGTTATGAGGGTCTCTAGGCTCTAA
GGAATCTGGGTTGCATGATCTGAAGAAAGACGAGAGGCAACCAGCAGACAAGATTTCTGCCAGCAACCA
CAGGTGGCTTATGGCTCTCCTGGCCACTCTGAAGGCTGAACTATGCCTGTCTTGCTCACAGTGGACATG
GAGATGTGTCTGAA

ACGCGTACGCGGCCGCTCGAGCAGAAACTCATCTCAGAAGAGGATCTGGCAGCAAATGATATCCTGGATT
ACAAGGATGACGACGATAAGGTTTAA

Protein Sequence: >RR210745 representing NM_012874
 Red=Cloning site Green=Tags(s)

```

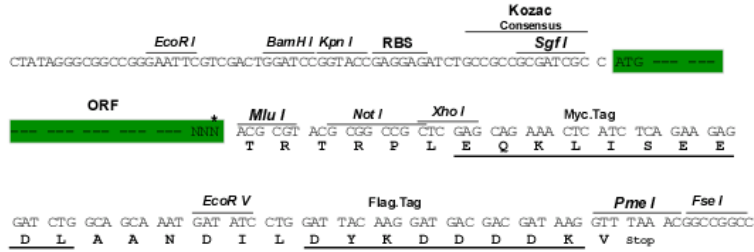
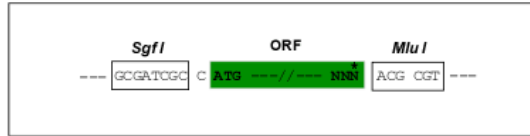
MKRIRWLTTPKATFVVLGCVWISVAQGTILSSCLTSCVTNLGRQLDSGTRYNLSEACIQGCQFQWNSIDQE
KCALKCNDTYVTICERESCEVGCNAEGSYEEVLDNTELPAPFASSIGSNGVTLRWNPANISGVKYII
QWKYAQLPGSWAYTETVSKLSYMVEPLHPFTEYIFRVVWIFTAQLHLYSPPSPSYRTHPYGVPETAPFIT
NIESSSDPTVEVSWAPPYFPGGPIILGYNLRILSKTQKLDSTGRTSFQFYSTLPNTTYRFSIAAVNEVGE
GPEAESMITTPSPAVQEEEQWFLSRKTSLRKRSKYLVEAHCLWSDAIRHNITGISVNTQQEVVYFSE
GTIIWMMGAANMSDVSRLRIFYRGSALVSSISVDWLYQRMYFIMDNRVHVCCLKHCSNLEEITPFSIVAP
QKVVVDSYNGYVYLLRDGIYRVHLLPLSVRDTKAVRIVESGTLKDFAVKQSKRIIYFNGTMQVMSTF
LDGSAFHRVLPWVPLADVKSFACENNDFLITDGKAIQQDLSFNEFIVGCDLSHIEEFGFNLVIFGSS
VQSYPLPGHPQEVSVLFGSREALIQWKPPILAIGASPSAWQNWYEVKVVSSQDILETTQVFLNISRTVLN
VPKLSQSSTKYMSVRASSPKGPGWSEPSVGTTLVPATEPPFIMAVKEDGLWSKPLSSFPGPEFLSSDVG
NVSDMDWYNNLSYSDTKGNVYVRPLNGMDISENYHISSIAGACALAFEWLGHFLYWAGKTYVIQRQSVL
TGHTDIVTHVKLLVNDMAVDPVGGYLYWTTLYSVESTRLNGESSLVLAQAPWLSGKKVIALTLDSLGLL
YWLVDNQCIHLTYAVLRGWSGADATITEFAAWSTSEISQNALMYYSGRFLWINGFRIITAEIGQRTSV
SVSEPGKFNQFTIIQTSCLKPLPGNFSSTPTVIPDSVQESSFRIEGHTSSFRILWNEPPAVDWGIVFYSVE
FSAHSKFLAIEQQSLPVFTVEGLEPYALFNLVTPYTYWKGKQKTSLSFRAPESVPSAPENPRIFILSLG
RYTRKNEVVVEFRWNKPKHENGVLTKSEIFYHISKQSGTNKSTEDWVSVSVTPPVMSFQLEAMSPGYIVS
FQVRVFTSKGPGPFSDIVMSKTSEIKPCPYLISLLGNKIEFLDMDQNVVWTFSLGAVSTVGYTADDEM
GYFAQGDALFLLNHNHSSKLFQDVLASDIAVIAVDWIARHLYFALKASQDGTQIFDVDLEHKVKSRE
VKICKSHTAIIISFSMPYLLSRLYWTEVSDLYQMFYCNISSTLHHVLPKASNQHGRRQCSCNVTESEL
SGAMTVDTSDPDRPWIYFTKQEIWAMDLEGCQCWKVIMVPATPGKRIISLTVDGEFYWIITMKDDTEI
YQAKKGSAILSQVKAPRSKHILAYSSALQFPDKAYLSVASNMVEASILNATNTSLILKLPVKTNLTW
HGITTPTSTYL VYYMEANRANSSDRKHNMLESQENVARIEGLQPFSTYVIQIAVKNNYSDPLEHLSLGE
IQGKTKSGVPGAVCHINATVLSDTLLVFWTESHKPNGPKELVRYQLVMSYLAPIPETPLRQDEFPSARL
SLLVTKLSGGQYVVKILACHSEEMWCTESHVSVNMFDTPEKPSALVPENTSLLLDWKAPSANLTRFW
FELQKWKYSEFYHVKASCSQGPVYVCNIANLQPYTPYNIIRVVVYTTGENSSSIPESFKTKAGVPSKPGI
PKLLEGSKNSIQWEKAEDNGNRLMYTLEVRKSI SNDSRDQSLRWTAVFNGSCSSICTWRKNLKGTFQF
RAVASNAIGFGEYSEI SEDITLVEDGFWITETSFILTIIVGIFLVATVPLTFVWHRSKLNHKATKEGLSV
LNDNDQELAE LRGLAAGVLANACYAVHTLPTQEEIESLPAFPREKLSLRLLLGSGAFGEVYEGTAVDIL
GRGSGEIKVAVKTLKKGSTDQEKIEFLKEAHLMSKFNHPNLIKQLGVCLLSEPYIILELMEGGDLLSYL
RKARGTTL SGPLLTADLVELCVDISKGCYLEQMHIHRDLAARNCLVSVKDYTSRPRVVIKIDGFLARE
IYKHDIYRKRGEGLLPVRWMAPELMDGIFTSQSDVWSFGILVWEILTLGHQYPYAHNSLDVLYVQAGG
RLEPPRNCPPDLWNL MFRCAWQEPDQRPFTFYNIQDQLQLFRNVSLLNNVSHCGQAAPAGGVINKGFEGEDN
EMATLNSDDTMPVALMETRNQEGLYMVLATKCSQSEDRYEGPLGSKESGLHDLKKDERQPADKDFCQQP
QVAYGSPGHSEGLNYACLAHSGHGDVSE
  
```

TRTRPLEQKLISEEDLAANDILDYKDDDDKV

Restriction Sites: Sgfl-Mlul

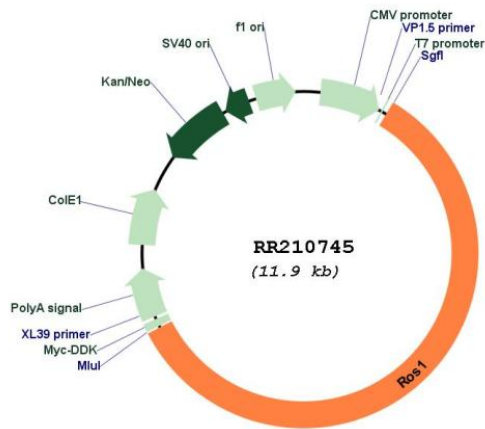
Cloning Scheme:

Cloning sites used for ORF Shuttling:



* The last codon before the Stop codon of the ORF

Plasmid Map:



ACCN: NM_012874

ORF Size: 7014 bp

OTI Disclaimer: The molecular sequence of this clone aligns with the gene accession number as a point of reference only. However, individual transcript sequences of the same gene can differ through naturally occurring variations (e.g. polymorphisms), each with its own valid existence. This clone is substantially in agreement with the reference, but a complete review of all prevailing variants is recommended prior to use. [More info](#)

OTI Annotation: This clone was engineered to express the complete ORF with an expression tag. Expression varies depending on the nature of the gene.

Components: The ORF clone is ion-exchange column purified and shipped in a 2D barcoded Matrix tube containing 10ug of transfection-ready, dried plasmid DNA (reconstitute with 100 ul of water).

Reconstitution Method:

1. Centrifuge at 5,000xg for 5min.
2. Carefully open the tube and add 100ul of sterile water to dissolve the DNA.
3. Close the tube and incubate for 10 minutes at room temperature.
4. Briefly vortex the tube and then do a quick spin (less than 5000xg) to concentrate the liquid at the bottom.
5. Store the suspended plasmid at -20°C. The DNA is stable for at least one year from date of shipping when stored at -20°C.

RefSeq: [NM_012874.1](#), [NP_037006.1](#)

RefSeq Size: 7902 bp

RefSeq ORF: 7017 bp

Locus ID: 25346

UniProt ID: [Q63132](#)

Cytogenetics: 20q11

MW: 261.7 kDa

Gene Summary: a proto-oncogene and a putative receptor-type tyrosine kinase that may be active in the lung, kidney and heart [RGD, Feb 2006]