

Product datasheet for **RR210628**

Arhgef11 (NM_023982) Rat Tagged ORF Clone

Product data:

Product Type: Expression Plasmids
Product Name: Arhgef11 (NM_023982) Rat Tagged ORF Clone
Tag: Myc-DDK
Symbol: Arhgef11
Synonyms: Gtrap48
Vector: pCMV6-Entry (PS100001)
E. coli Selection: Kanamycin (25 ug/mL)
Cell Selection: Neomycin
ORF Nucleotide Sequence: >RR210628 representing NM_023982
Red=Cloning site Blue=ORF Green=Tags(s)

TTTTGTAATACGACTCACTATAGGGCGCCGGAATTCGTCGACTGGATCCGGTACCGAGGAGATCTGCC
GCC**GCGATCGCC**

ATGAGCATACGATTGCCCATAGTATAGACAGATCAGCCAGTAAAAGCAGTCTCACCTGTCCAGTCCCA
TTGCATCTGGTTAAGTAGCCTGTCTTCTCTGGGAGATTCTACACCTGAACGCACATCCCCTTCTACCA
CGCCAGCCCTCTGACACTTCTGAGACAACAGCAGGTCTTGTTCCAGCGCTGTGTCATCATCAAAAGGAC
CAGCATGGCTTTGGCTTACAGTTAGTGGAGATCGCATTGTAAGTGGTGCAGTCCGTGCGCCCTGGAGGCG
CAGCCATGAAAGCTGGTGTGAAAGAGGGTGACCGATCATCAAAGTAAACGGCACCATGGTGACCAATAG
CTCACACCTGGAGGTGGTAAAGCTTATCAAATCTGGCGCCTATGCTGCGCTTACCCTCCTAGGCTTCT
CCTCCCTCCGTCGGCGTCTCTGGGCTCCAGCAGAAATCCATCTGTGGCAGGAGTGCTCAGAGTTAACCCCA
TCATTCTCCACCACCTCCCCGCCACCCTTGCCACCTCCACAGCACATTACTGGACCCAAACCTCTTCA
GGATCCTGAAGTCAAAAGCACGCCACTCAAATCCTCTGGAATATGCTAAGACAGGAGGAGGAAGAGTTA
CAGGACATACTCCACCCTGTGGTGAGACCAGTCAAGAAATGTGAGGGCCGCTCTCTGTGGACTCCC
AGGAGGCAGACAGTGGCTTGGATTCTGGGACAGAACGCTTCCCTCCATCAGTGAGTCAATGTAATCG
GAACTCAGTATTGTCAGATCCTGGACTAGACAGCCCTCAAACCTCCCTGTAATCCTGGCCAGGGTGCC
CAGCACACAGGCGACAGGGCTCAGATGCAGCGTTGCTCCCGCTCAACCACCAGGTATAGATCAAAGCC
CAAAGCCTCTGATTATTGGCCCAGAGGAAGATTATGACCCAGGTTATTTCAACAATGAGAGTGACATCAT
CTTCCAAGATCTTGAAAACTGAAGTCACATCCAGCTTACTTGGTAGTTTTTCTACGTTACATCCTCTCT
CAGGCAGACCCTGGCCCCCTGCTTTTTTATTTGTGTTCAAGTTTATCAACAGACAAATCCCAAAGATT
CCCGAAGTCTGGGAAAGACATCTGGAACATTTCTGGGAGAAAATGCGCCTCTCAGAGTGAAGATCCC
TGAGATGTTGCAGGCTGAAATTGACCTACGCTGCGGAACAATGAGGACCCTCGCAATGTGCTCTGTGAA
GCTCAGGAGGCAGTCATGCTGGAATCCAGGAGCAGATCAACGACTACAGATCCAAGCGTACTCTGGGCC
TGGGCAGCCTCTATGGTAAAAATGACCTGCTAGGCCTGGATGGGACCCTCTTCGAGAACGCCAAATGGC
TGAGAAGCAGCTGGCTGCCCTTGAGATATCTTGTCCAAATATGAGGAAGATCGGAGTGCCCCATGGAC
TTTGCTGTTAATACCTTTATGAGCCACGCTGGGATCCGCTCTCGGGAGTCTCGATCCTCCTGCACGGCAG



AAAAGACCCAGTCTGCCCTGACAAGGACAAGTGGCTGCCCTTCTCCCTAAGACCAAGAAGCAGAGCAG
CAATTC AAGAAAAGAAAGGATGCCTTGGAGGACAAGAAGCGAAACCCCATCCTCAGATATATTGGGAAG
CCCAAGAGCTCCTCTCAGAGCATTAAAGCCAGGCAATGTGAGGAACATCATTACAGCACTTTGAGAACAGCC
ATCAGTATGATGTCCAGAGCCGGGACACAACGACTCTCAACAGGAAGCTTCTTGAGGACCTGCTGGA
GAGTGACAGTTCCGCGCTCAGAGATTCGACTGGGCCGCTCTGGGAGCCTCAAGGGCCGGGAAGAGATGAAG
CGATCCCGAAAAGCAGAGAACGTGCCCGGCCCTCGAAGTGACGTTGACATGGATGCTGCTGCAGAGGCTG
CCCGCTTACCAGTCAGCCTCGTCTCTGCCTCCAGCCTTCCACCAGGTCCTTGAGAACCCCAACCC
TCCCTTACCCCCAAAATGGGCCGAGGAGCATTGAGTCCCCAATCTGGGGTTCTGTACAGACGTCATC
CTTCCCCACCTCCTGGAGGATGATCTGGGCCAATTGTCTGACCTGGAGCCAGAGCCAGAGGTCAAAACT
GGCAGCATACAGTAGGCAAGGATGTGGTGGCAACCTGACCCAGAGGGAAATTGACCGGCAAGAGGTCAT
CAATGAGCTTTTTGTGACAGAAGCATCTCACCTGCGCACACTCCGAGTCTGGACCTCATCTTCTACCAG
CGCATGAGAAAGGAGAACCTAATGCCTCGGGAAGAGCTAGCGCGGCTCTTCCCTAACCTGCCTGAGTCA
TAGAGATTACAATTCTGGTGTGAGGCCATGAAGAAGCTCCGGGAGGAGGGCCCAATTATCAGAGACAT
CAGTGACCCCATGCTGGCTCGGTTTGTGTTGCTGCCCGAGAAGAACTCCAGCAAGTAGCTGCACAATTC
TGTTCTATCAGTCAGTAGCCCTAGAGTAATCAGGACTAAGCAACGTAAGGAGAGTCGGTTCAGCTCT
TCATGCAGGAGGCTGAGAGCCACCTCAGTGCCGCGCTCTGCAGTCCGAGACCTCATCGTCTCTGAAAT
GCAACGGCTACCAAGTACCCACTGCTGCTAGAGAATCATCAAGCACAGAGGGTGGCACCTCTGAG
CATGAGAAGCTCTGCCGTGCCGGGACCAAGTGCAGGAGATTCTCAAGTTTGTGAATGAAGCAGTAAAGC
AGACAGAGAACCACCAGGCTAGAGGGTACCAGAAACGCTGGATGCCACTGCCCTAGAGCGGGCCAG
CAACCCCTTGGCAGCAGAGTTCAAGAGCCTGGATCTTACAACAAGGAAGATGATCCACGAGGGGCCCTG
ACCTGGAGGATCAGCAAAGACAAGACCTGGACCTCCAGTGCTTCTGCTTGGAGACCTGGTGGTACTGC
TGCAGAGACAAGAGGAGCGGCTGCTGCTAAAGTGCCACAGCAAGCAGCCGTGGGCTCCTCCGACAGCAA
GCAGAGTTTCCAGCCTGTGCTGAAGCTCAATGCTGCTCATCCGCTCCGTGGCTACAGACAAGCAGAGC
TTCTTCATCATCTGCACCTCCGAGTCCGAGCCTCCCGAGATCTATGAGCTGGTTGCAATTGACGTCATCAG
ACAAGAATATATGGATGGAGCTCTTAGAAGAGGCGTGCAGAATGCCACCAAGCACCTGGAGCTGCCCC
AATCCCCATCCATCCCTCACCACCAGGATCCCAGGAGCCGGCCTACCAGGGCTCCACCTCCAGCAGGGTA
GAAATAAATGACTCAGAAGTATATCACACTGAAAAAGAACCCAAGAAGCTACCTGAAGGCCCCGGCCCTG
AGCAGAGAGTTCAAGACAAGCAGCTGATAGCACAAAGGGGAGCCTGTGCAGGAAGAGGATGAAGAGGAATT
GAGGACCTTGCTCGAGTCCCCCTCCCTGGATGGAGAAAACAGAGGCATCAGGACAAGGGACCTGTC
CTTCTGGCCCTCACAGGCCCTCTGCTCATGGAGGACTTGCTGATGCTGCCCTGGAAGATGTGGAGAACT
TGCGTCACCTGATCCTGTGGAGCCTGCTGCCTGGTCCACTGTGAAGACTCAGGCTGCTGGCGAGCCTGA
GGATGACCTCACACCACCCCTTCTGTCGTGAGCATCACCTCTCACCCCTGGGACCCAGGGTCCCCAGGG
CAAGCTCCCACCATAAGTGACAGCACCCGACTTGCAGGGCCAGAGGGCAGCCAGCCAGAGGGCGAGGATG
TTGCTGTGAGTTCTCTGGCACACCTGCCGCAAGGACCAGAAGTTCTGGCGTCTGGGACTCTCTGAGCT
GGATAGGAATCCGGCTGCAGAGGCTGCAAGCACAGAACCAGCAGCAAGTTACAAGTTGTGAGAAAAGTC
TCTCTACTCCCTGGTGGTGGTGTGCGGTGCAGCCAAGGTGGCGGGCAGCAATGCTATCCCTGACAGTGGCC
AGTCAGAATCTGAGCTATCTGAAGTGGAAGGCGGAGCACAGGCTACGGGGAAGTGTCTATGTCAGCAT
GCCAGCAGGACCTCTGGACTCCAGCACTGAGCCTACTGGGACACCCCAAGCCCCCTCACAGTGTACAGC
CTCCCTGCATGGCCAACAGAGCCTCAGCCCTACAGGGGAGTCCGTGGGGGTCAGTGTCCAGCCTGGTCC
GCAGGGATGTGGATGTGATCTTCCATACCATCGAGCAGCTACCATCAAGCTTCCAGACTGAAGGACAT
GGAGCTGGCCACAGAGAGCTGCTCAAGTCCCTTGGAGGAGAGTCATCGGGTGGAAACCACACCTGTGGG
AGTTTTTACACAGAGGCAGCCAGATGGACAGACTACTCCCTCTCTCCTCCAGCCAAGGAAGCCCTGGCCT
CTGATTCACAAAATGGTCAGGAGCAGGGTCTGCCCTGAAGAAGGCTCCGACATCGCCCTGGAAGACAG
TGCCACTGACACAGCTGTGCACCAGGACCA

ACGCGTACGCGGGCCGCTCGAGCAGAACTCATCTCAGAAGAGGATCTGGCAGCAATGATATCCTGGATT
ACAAGGATGACGACGATAAGGTTTAA

Protein Sequence:

>RR210628 representing NM_023982
 Red=Cloning site Green=Tags(s)

MSIRLPHSIDRSASKKQSHLSSPIASWLSSLSSLDSTPERTSPSHHRQPSDSETTAGLVQRCVVIQKD
 QHGFVTVSGDRIVLVQSVRPGGAAMKAGVKEGDRIKVNVTMTNSSHLEVVKLKSGAYAAL TLLGSS
 PPSVGVVGLQQNPSVAGVLRVNP IIPPPPPPLPPPQHITGPKPLQDPEVQKHATQILWNMLRQEEEEEL
 QDILPPCGETSQRTCEGRLSVDSQEQADSGLDGTERFPSISESLMNRNSVLSDPGLDSPQTSPVILARVA
 QHRRRQGSDAALLPLNHQGIDQSPKPLIIGPEEDYDPGYFNNESDII FQDLEKLSHPAYLVVFLRYILS
 QADPGPLLFLYLCSEVYQQTNPKDSRSLGKDIWNIFLEKNAPLRVKIPEMLQAEIDLRLRNNEDPRNVLCE
 AQEAVMLEIQEQINDYRSKRTLGLGSLYGENDLLGLDGDPLRERQMAEKQLAALGDILSKYEEDRSAPMD
 FAVNTFMHAGIRLRESRSSCTAEKTSAPDKDKWLPFFPKTKKQSSNSKKEKDALEDKKRNPILRYIGK
 PKSSSQSIKPGNVRNIIQHFENSHQYDVPEPGTQRLSTGSPEDLLESDSRSEIRLGRSGSLKGREEMK
 RSRKAENVPRSDVMDAAEAARLHQSSASSSLSTRLENTPPF TPKMGRRESIEPNLGFCTDVI
 LPHLLEDDLQQLSDLEPEPEVQNWQHTVGKDVANLTQREIDRQEVINELFVTEASHLRTLRLVLDLIFYQ
 RMRKENLMPREELARLFPNLPELIEIHNSWCEAMKKLREEGPIIRDISDPMLARFDGPAREELQQVAAQF
 CSYQSVALELIRTKQRKESRFQFMQEAESHPQCRRLQLRDLIVSEMQR LTKYPLLENIKHTEGGTSE
 HEKLCRARDQCREILKFVNEAVKQ TENRHRLEGYQKRLDATALERASNPLAAEFKSLDLTTRKMIHEGPL
 TWRISKDKTLDLQVLLLEDLVLLQRQEERLLKCHSKTAVGSSDSKQTFSPVLKLNNAVLI RSVATDKRA
 FFIICTSELGPPQIYELVALTSSDKNIWMELLEAVQNA TKHPGAAP IPIHPSPPGSGEPAYQGSSSRV
 EINDSEVYHTEKEPKKLEGGPQEVQDKQLIAQGEVQEEDEEELRTLPRAPPSLDGENRGIRTRDPV
 LLALTGPLLMEGLADALEDVENLRHLILWLLPGHTVKTAAGEPEDDLTPTSPVVSITSHWPDPGSPG
 QAPTISDSTRLARPEGSQPEGEDVAVSSLAHLPPRTRSSGVWDSPELDRNPAAEA AASTEPAAASYKVV RKV
 SLLPGGGVGAAKVAGSNAIPDSGQSESELSEVEGGAQATGNCFYVSM PAGPLDSSTEPTGTPPSPSQCHS
 LPAWPTEPQPYRGRVGGQCSSLVRDQVDFHTIEQLTIKLRHRLKDMELAHRELLKSLGGESSGGTTPVG
 SFHTEAARWTDYSLSPPAKEALASDSQNGQEQGSCPEEGSDIALEDSATDTAVSPGP

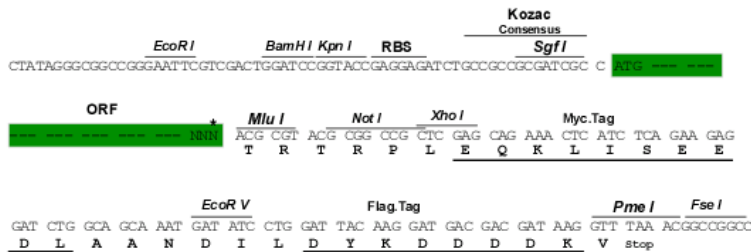
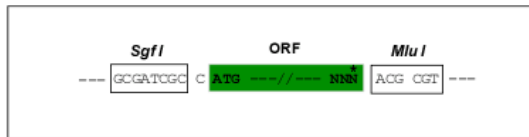
TRTRPLEQKLISEEDLAANDILDYKDDDDKV

Restriction Sites:

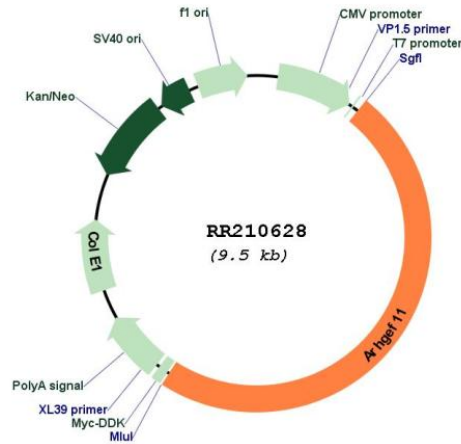
SgfI-MluI

Cloning Scheme:

Cloning sites used for ORF Shuttling:



* The last codon before the Stop codon of the ORF

Plasmid Map:


- ACCN:** NM_023982
- ORF Size:** 4581 bp
- OTI Disclaimer:** The molecular sequence of this clone aligns with the gene accession number as a point of reference only. However, individual transcript sequences of the same gene can differ through naturally occurring variations (e.g. polymorphisms), each with its own valid existence. This clone is substantially in agreement with the reference, but a complete review of all prevailing variants is recommended prior to use. [More info](#)
- OTI Annotation:** This clone was engineered to express the complete ORF with an expression tag. Expression varies depending on the nature of the gene.
- Components:** The ORF clone is ion-exchange column purified and shipped in a 2D barcoded Matrix tube containing 10ug of transfection-ready, dried plasmid DNA (reconstitute with 100 ul of water).

Reconstitution Method:

1. Centrifuge at 5,000xg for 5min.
2. Carefully open the tube and add 100ul of sterile water to dissolve the DNA.
3. Close the tube and incubate for 10 minutes at room temperature.
4. Briefly vortex the tube and then do a quick spin (less than 5000xg) to concentrate the liquid at the bottom.
5. Store the suspended plasmid at -20°C. The DNA is stable for at least one year from date of shipping when stored at -20°C.

RefSeq: [NM_023982.1](#), [NP_076472.1](#)

RefSeq Size: 4584 bp

RefSeq ORF: 4584 bp

Locus ID: 78966

UniProt ID: [Q9ES67](#)

Cytogenetics: 2q34

MW: 168.5 kDa

Gene Summary: binds the intracellular carboxy-terminal domain of cerebellar glutamate transporter EAAT4; may modulate glutamate transporter activity [RGD, Feb 2006]