

Product datasheet for **RR210616**

Slc44a5 (NM_001134594) Rat Tagged ORF Clone

Product data:

Product Type:	Expression Plasmids
Product Name:	Slc44a5 (NM_001134594) Rat Tagged ORF Clone
Tag:	Myc-DDK
Symbol:	Slc44a5
Synonyms:	RGD1564620
Vector:	pCMV6-Entry (PS100001)
E. coli Selection:	Kanamycin (25 ug/mL)
Cell Selection:	Neomycin



[View online »](#)

ORF Nucleotide Sequence:

>RR210616 representing NM_001134594
 Red=Cloning site Blue=ORF Green=Tags(s)

TTTTGTAATACGACTCACTATAGGGCGGCCGGAATTCGTCGACTGGATCCGGTACCGAGGAGATCTGCC
 GCC**CGCATCGCC**

ATGGCCTATCCTACAGACAGCCAGGGACAATTCTGTGGCCAGAAGGGAACCCCAATGAGAACAAGACAG
 TTCTGTTTTACTTTAACATATTTAGATGTACCGGCACATCCATGATGCTTCGCCTACAGTCTACTAC
 ACAGATCTGCGTCTCCAGGTGCCAGAGAGATTCTGACCTACGTGGATATGCAAATTTGAACAAAGAA
 GACAAAACTACTGGAACTACTATCGGCAGTTCTGCAAGGCCAGGCCAGGCCTGTGGAGACTCTCGCAG
 ATCTTCTGTCCAGTGGTACTGCTCTAGCAGTGTACCAAGCAGACCTTTTCTGCAGAGGTGTGCC
 TGACTTTTCAGCCATCAATGGTAACTTGACTTTAGGAAGCAGGATGCACCTTTGAAGATGGAGGTGGCAG
 AAGAGGACCGTGGTAGAACTCAGGGAGGCGGAGTGGCATTAGTGACGTGATTGACGCCGGGCAATTG
 GGCTGAAGGTGCTTGAAGACTATTCGACATCGTGAAGTGGATTCTCATCGGCCCTGACTATTGCCATGGC
 GCTGAGCTGGACGTTTTTGGTACTCCTGAGTTACAGCTGGATTCTCTCTGTTCTTCATATTCGGT
 GTGCTTGGAAATATAGGATACGGAATATGGTACTGTTTTCTGGAGTACAACAGCATTGAGCAGAAACCAC
 AGTCCCGCATCTGGATGTACGGCATCGGGATTCAGACGAGGCTGAACATGTTCTTCACTTGAAGGAGAC
 CTGGTTTTCTATGATGATCATCTTGTACGCCATTGAAGTCGTATCATCATTGTGCTGATCTTCTCAGA
 ACTCGGATCCAAGTGGCCATTATCTCTGTAAGGAAGGAAGCAAAGCCATTGGCTACCTCCAGTGCCT
 TAGTCTACCCATTTTTAACCTTCATCTTGTATCAATTTGCATTTCTACTGGGCTGTGACAGCTGTTTT
 CTTGGCTACATCAGGGGTACCAATATTCAAAGTTATGGTCCCAGAGGGGGAATGTATACATGAAGATGAA
 GCTTGTGACCCAGAGATTTTTCTAACACTGACATCCCCAAAGCCTGCCCCGAGCATCGTGAACCTTTG
 CTTTCTATGGAGGAAGGAGCATGTACCACAACATACATCGCGACCTCCAGCTCTACAACCTTTTGCCT
 CCTTTGGCTCATAAACTTTGTCATTGCCTTGGGTCAAGTGTGCCCTTGTGGTGCCTTTGCTTCATATTAC
 TGGCCATGAGAAAACCTGAAGACATCCCGCGGTACCCCTCTTCACTGCGTTTTGGGCGAGCAGTACGAT
 ACCACACGGGCTCTAGCCTTTGGATCTTTGATCCTTGCCTTCGTTTCAAGTATGATCGTAGA
 ATACCTGGACAGGCGACTTAAAAAGGCTCAGAACAGTGTCTGCTCAGTTCTGCACTGCTGCCTACGGTGC
 TGTTTCTGGTGTAGAAAAGATGGTGAAGTTTTTAAACAGAAATGCCTACATCATGATTGCATTATATG
 GCAAAAACCTTCTGTGAGTCCACAAGGGATGCTTTCTATCTGCTCATGAGAAACATTCTAAAAGTCAAAGT
 TACAGATGAAGTCACTACTTTGTATTACTCCTGGGAAAGTCTAGTTTCTGGGATTGTAGGTGCTTG
 GCCTTCTGCTCTTACAGAGAGACTACACGAAATCGTAGAGGACCAACGAGTTTAAATTACTACTGGG
 TCCCTTCTGGTAAGAACTGGTACTTTAGTATTGGGTGATTGGCTTCGGCAATGCAAGTGTATTCCC
 CGGAGTTTTGAAAGGCTTGGAGGTGAAGATCTGGAGAGGAATGATGGGTCTGCAGAGAAACCTTACTTTG

ACGCGTACGCGGCCGCTCGAGCAGAAACTCATCTCAGAAGAGGATCTGGCAGCAAATGATATCCTGGATT
 ACAAGGATGACGACGATAAGGTTTAA

Protein Sequence:

>RR210616 representing NM_001134594
 Red=Cloning site Green=Tags(s)

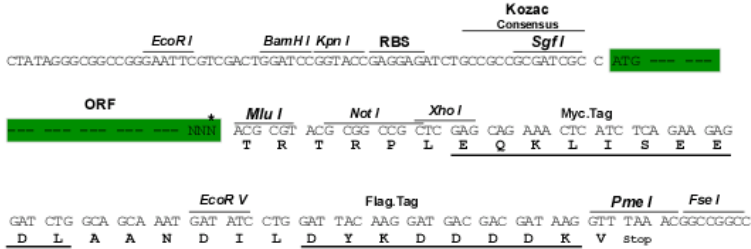
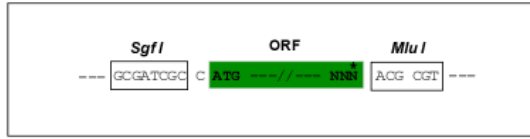
MAYPTDSQGFQCGKQKTPNENKTVLFYFNIFRCTGTSMMRLRLQCSTTQICVSRCPERFLTYVDMQILNKE
 DKNYWEYYRQFCKAQARPVETLADLLSSGDCPLAVYPSRPFLQRCVPDFSAINGNLTGSRMHFEDGGGQ
 KRTVVVELREAASGISDVIDARAIGLKVLEDYSTSWKWILIGLTIAMALSWTFLVLLRFTAGFLFWFFIFG
 VLGIIYGIWYCFLEYNSIQKQPQSAIWMYIGIQTRLNMFHFKETWFSMMIILSAIEVVIIVLIFLR
 TRIQVAIILLKEGSKAIGYLPALVYPFLTFILLISICISYWAVTAVFLATSGVPIFKVMVPEGECIHEDE
 ACDPEIFPNTDIPKACPGASCNFAFYGGRSMYHNYIATFQLYNLF AFLWLINFVIALGQCALAGAFASY
 WAMRKPEDIPTYPLFTAFGRAVRYHTGSLAFGLILAFVQMFKVIYEYLDRLKKAQNSAAQFLHCLLRC
 CFWCLEKMKVFLNRNAYIMIALYGNFCESTRDAFYLLMRNLIKVKVTDEVTYFVLLLGKVLVSGIVGVL
 AFLLLFTRLHEIVEGPTSLNYYWVFPFLVRTGDFSDWVIGFNASVFPVLLKGLVLEVKIWRGMMGLQRNLT

TRTRPLEQKLISEEDLAANDILDYKDDDDKV

Restriction Sites: SgfI-MluI

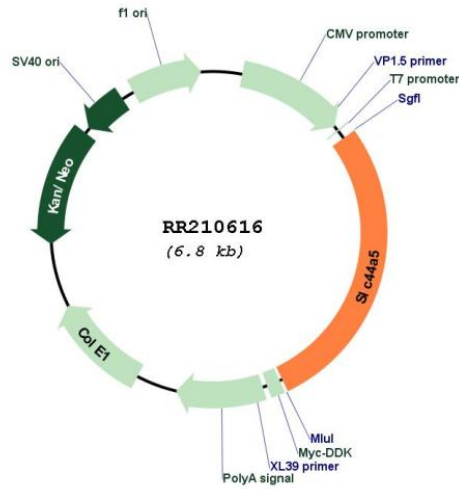
Cloning Scheme:

Cloning sites used for ORF Shuttling:



* The last codon before the Stop codon of the ORF

Plasmid Map:



ACCN: NM_001134594

ORF Size: 1890 bp

OTI Disclaimer:	The molecular sequence of this clone aligns with the gene accession number as a point of reference only. However, individual transcript sequences of the same gene can differ through naturally occurring variations (e.g. polymorphisms), each with its own valid existence. This clone is substantially in agreement with the reference, but a complete review of all prevailing variants is recommended prior to use. More info
OTI Annotation:	This clone was engineered to express the complete ORF with an expression tag. Expression varies depending on the nature of the gene.
Components:	The ORF clone is ion-exchange column purified and shipped in a 2D barcoded Matrix tube containing 10ug of transfection-ready, dried plasmid DNA (reconstitute with 100 ul of water).
Reconstitution Method:	<ol style="list-style-type: none">1. Centrifuge at 5,000xg for 5min.2. Carefully open the tube and add 100ul of sterile water to dissolve the DNA.3. Close the tube and incubate for 10 minutes at room temperature.4. Briefly vortex the tube and then do a quick spin (less than 5000xg) to concentrate the liquid at the bottom.5. Store the suspended plasmid at -20°C. The DNA is stable for at least one year from date of shipping when stored at -20°C.
RefSeq:	NM_001134594.1 , NP_001128066.1
RefSeq Size:	2014 bp
RefSeq ORF:	1893 bp
Locus ID:	365962
Cytogenetics:	2q45
MW:	71.8 kDa