

Product datasheet for **RR210576**

Ltf (NM_001106864) Rat Tagged ORF Clone

Product data:

Product Type:	Expression Plasmids
Product Name:	Ltf (NM_001106864) Rat Tagged ORF Clone
Tag:	Myc-DDK
Symbol:	Ltf
Vector:	pCMV6-Entry (PS100001)
E. coli Selection:	Kanamycin (25 ug/mL)
Cell Selection:	Neomycin



[View online »](#)

ORF Nucleotide Sequence:

>RR210576 representing NM_001106864
 Red=Cloning site Blue=ORF Green=Tags(s)

CTATAGGGCGGCCGGGAATTCGTCGACTGGATCCGGTACCGAGGAGATCTGCCGCCGCGATCGCCGGCGC
 GCC

ATGAGGCCGTTTCATCACTGTCTTGTATGTTTCTTGGGGTCTTGGACCCTTCTAGCTAGGATAGATACAG
 TTGTTTCGATGGTGACCATATCAAGAAATGAGGCACAAAATGTTTCATGTGGCAAGAGATGCTGAACAA
 AGCGGGTGTCCCAGGCTTAGATGTGCCAGGAAGTACTTCATGCCTCACTGTATCCAGGAGATTATGATG
 AGGAGAGCCGACGCCATGACTCTTTCTGGCAGCGCCATATTCGATTTCTATTTCCCTACAACTGCAGC
 CGATAGCTGCCGAAGTCTATGGAACCAAGAGAAGCCCCGGATTCACTATTATGCGGTGGCCGTCGTGAA
 GAACAGCAGTGACATTCGTCTGAACCAACTCCAAGGCTTGAAGTCTGCCATGCAGGCTTTGACACTAGT
 GCAGGGTGGATAGCCCTTAGGGGCACCTCGTCCATACCTGAATTGGGATGAGAAATCTGTATCCCTTG
 AGGAAGCGGTATCCAAGTCTTCTCACAGAGCTGTGTTCTGGTATCAGCAAGTCTAGATTTCCAGGTT
 GTGTAGCTTGTGTGACGGAAAGGAGAACACATATGTGACTTTTCCCCCAGGAACCATACGCTGGCTAC
 GCAGGTGCCTTCAGGTGTCTGAGAGACAACGCTGGAGATGTGGCTTTTATCAGAGAAAGCAGCATATTTG
 AGGAGTTACCCAATGAAGCTGAATGGGACCAGTACAAGCTGCTTTGCCAGATAACACCTGGAAGCCGGT
 GACAGAGTACAAGGAGTGCCACCTGGCTCAAATCCCTTACAGTGTCTGCTAGCCCATGTGAGAAGTGAA
 AAAGACAGTGCCATCTGGGAGCTTCTCCACCTGTACAGGAAATGTTTGGAAAAACAAAACATCAAAT
 TCGAGCTCTTTGGCTCCTATCTGGGACAGAAGGACCTGCTGTTCAAGGACTCTGTATTGGCTTTGTGAG
 GGTTCCCTTACAGTGAATGTTTGGCTTACCTGACCTCAGTTATATCATGGCCCTGAAGAGCTTGAAG
 GAAAGCAAAGGAGAATGTGATGGCCTTAAGGGCCGGATCACGTGGTGTGCCGTGGCAGTGAGGAGAAGC
 TCAAGTGTGACCAGTGGAGCAGAGTGAGTGTGGCAAGATTACCTGCATCTCATGCACCACCAGGAGCA
 GTGCATCTTCTCTATCACGATGGGAGATGCTGATGCCATGAACTTGGATGGAGGCTATATCTACTCTGCG
 GGCAAGTGTGGTTTAGTTCAGTTTTGGCAGAGATCCAGAAATCCCCAATAGCAATGGCTCTGATTGTG
 TGGACAGACCAGCAGAAGGGTACCTTGCTGTAGCCGAGTCAAGAAAGAGATACTGGCTTACCTGGAG
 CACTGTGAGAGGGAAAGAAATCCTGCCACACCGCTGTGGACAGGACCGGGCTGGAACATTTCCATGGGC
 CTGCTTGTCAACCAGACCAACTCTGCCAATTTAAGGAATTTTAAACAAAAGCTGCGCCCTGGGTCTT
 TCCTCTATTCCAATCTCTGTGCCCTGTGATTGGTGACGAGAACGGTAAGGATAAGTGAACCCCAACAG
 CCAAGAGAGGTACCAAGGCTACGTCGGGGCTTTCAGGTGTCTGGCTGAGAAGGCAGGAAATGTCGGTTT
 TTGAAGGACGCCACTGTCTTGCAGAATACAGACGGGAAGAATGCTGACAAGTGGGCTAAGAACTTGAAGC
 TGGATGACTTCGAGCTGTTGTGCCTTGTGACACCCGGAAGCCTGTGACTGAGGCTAAGAACTGCCACCT
 AGCCGTAGCCCCAACCATGCTGTAGTAGCTCGGAAGGACAAGGCGAGACTCGTTTCAAGAGAGTCTGCTT
 TACCAACAGGTTTCAAGTTGGGAGAAATGGATGCAGGTGTCCAGAAGAGTTTTGCCTGTTCAAGTCTGAAA
 CCAAAAACCTTCTGTTCAATGACAACACTGAGTGTCTGGCCAAGCTCCCCAGCAAAATCATATGGGAGGA
 ATATCTAGGCAAGGAGTACGTCGTAGCGATCGCGCATCTGAGGCAGTGTCCAATATCACTCAGGAAGCC
 TACAATTTTCTTGCCTTCGAACTCC

ACGCGTACGCGGCCGCTCGAGCAGAACTCATCTCAGAAGAGGATCTGGCAGCAAATGATATCCTGGATT
 ACAAGGATGACGACGATAAGGTTTAA

Protein Sequence: >RR210576 representing NM_001106864
 Red=Cloning site Green=Tags(s)

MRPFITVLMFLGVLGPFLARIDTVVRWCTISRNEAQKCFMWQEMLNKAGVPKLRCARKYFMPHICQEIIM
 RRADAMTLSGSAIFDFYFPYKLPQIAAEVYGTKEKPRIHYAVAVVNSSDIRLNQLQGLKSchAGFDTS
 AGWIAPL GALRPYLNWDEKSVSLEEAVSKFFSQSCVPGISKSRFPRLCSLCAGKGEHICDFSPQEPYAGY
 AGAFRCLRDNAGDVAFIRESTIFEELPNEAEWDQYKLLCPDNTWKPVTEYKECHLAQIPSRVAHVHVRSE
 KDSAIWELLHLSQEMFGKNKTSKFELFGSYLGQKDLLFKDSVIGFVRVPFTVNVWLYLTFYSYIMALKSLK
 ESKENVMALRARITWCAVGSSEKLNKCDQWSRVSVGKITCISCTTTEQCIFSI TMGDADAMNLDGGYIYSA
 GKCGLVPLAEIQKSPNSNGSDCVDRPAEGLAVAAVRKEDTGFTWSTVRGKKSCHTAVDRTAGWNIIPMG
 LLVNQNTNSCQFKEFFNKSCAPGSFLYSNLCALCIGDENGKDKCNPSQERYQGYVGAFRCLAEKAGNVAF
 LKDATVLQNTDGKNADKWKAKNLKDDFELLCLDDTRKPVTEAKNCHLAVAPNHAVVARKDKARLVQQELL
 YQQVQFGRNGCRCPPEEFCLFRSETKNLLFNDNTECLAKLPSKITWEEYLGKEYVVAIAHLRQCSNITQEA
 YNFLALRNS

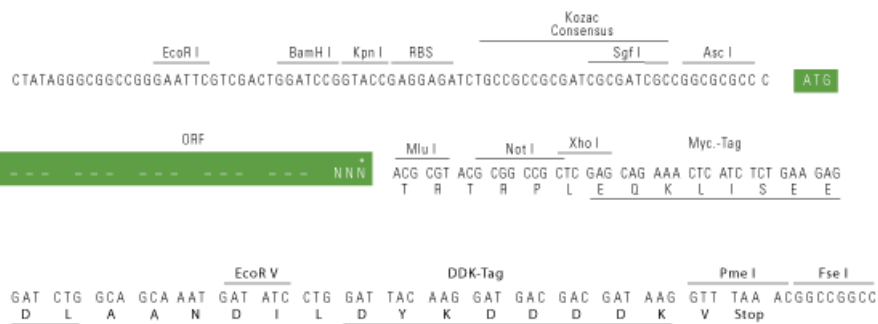
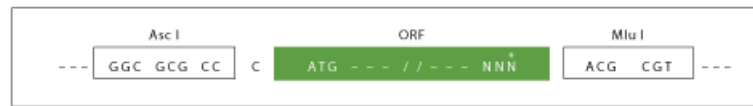
TRTRPLEQKLI SEEDLAANDILDYKDDDDKV

Restriction Sites:

AscI-MluI

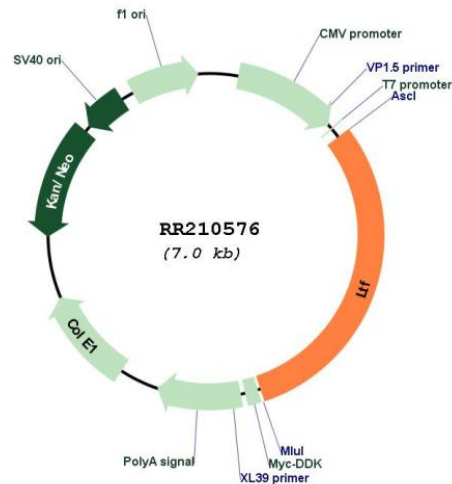
Cloning Scheme:

Cloning sites used for ORF Shuttling:



* The last codon before the Stop codon of the ORF

Plasmid Map:



ACCN: NM_001106864

ORF Size: 2127 bp

OTI Disclaimer: The molecular sequence of this clone aligns with the gene accession number as a point of reference only. However, individual transcript sequences of the same gene can differ through naturally occurring variations (e.g. polymorphisms), each with its own valid existence. This clone is substantially in agreement with the reference, but a complete review of all prevailing variants is recommended prior to use. [More info](#)

OTI Annotation: This clone was engineered to express the complete ORF with an expression tag. Expression varies depending on the nature of the gene.

Components: The ORF clone is ion-exchange column purified and shipped in a 2D barcoded Matrix tube containing 10ug of transfection-ready, dried plasmid DNA (reconstitute with 100 ul of water).

Reconstitution Method:

1. Centrifuge at 5,000xg for 5min.
2. Carefully open the tube and add 100ul of sterile water to dissolve the DNA.
3. Close the tube and incubate for 10 minutes at room temperature.
4. Briefly vortex the tube and then do a quick spin (less than 5000xg) to concentrate the liquid at the bottom.
5. Store the suspended plasmid at -20°C. The DNA is stable for at least one year from date of shipping when stored at -20°C.

RefSeq: [NM_001106864.1](#), [NP_001100334.1](#)

RefSeq Size: 2761 bp

RefSeq ORF: 2130 bp
Locus ID: 301034
Cytogenetics: 8q32
MW: 79.8 kDa