

## Product datasheet for **RR210560**

### Trmt1 (NM\_001013870) Rat Tagged ORF Clone

#### Product data:

**Product Type:** Expression Plasmids  
**Product Name:** Trmt1 (NM\_001013870) Rat Tagged ORF Clone  
**Tag:** Myc-DDK  
**Symbol:** Trmt1  
**Synonyms:** RGD1305992  
**Vector:** pCMV6-Entry (PS100001)  
**E. coli Selection:** Kanamycin (25 ug/mL)  
**Cell Selection:** Neomycin  
**ORF Nucleotide Sequence:** >RR210560 representing NM\_001013870  
 Red=Cloning site Blue=ORF Green=Tags(s)

TTTTGTAATACGACTCACTATAGGGCGCCGGGAATTCGTCGACTGGATCCGGTACCGAGGAGATCTGCC  
 GCC**CGATCGCC**

ATGGAACGGAAGGCCAGGAGCCTCCCTACCACCAACGATGGAGAACGGCACACGGTCTGTGAAGAGC  
 GCCACCCCGCGGCCCGGTGCGACTGTACCCAGGGCGCCGAGAAATCTCTTCCCAAGTCCCAACGA  
 GGTTTTCTACAACCCGGTGCAGGAGTTCAACCGGGACCTAACGTGTGCTGTGATCACAGAATTTGCTCGA  
 ATTCATCTTGGGGCCAAGGGAATCCAGATCAAGGTCCCAGGAGAGAAGGACTTGCAGAAAATAGCTGTGG  
 ACTTGTCTGATCAAGAGGAGGAAACAGCTGGACAGAATGAAAACCTGGCCCCAGGAGACCAGCCTCGGAC  
 AGCTGCAGTGGGTGAGATCTGTACAGGAAGTCTACGAGTGTGGAAGGCCTGGCAGCTTCCGGTCTGCGC  
 TCTATCCGATTTGCCCTAGAGGTTCTGGCCTCCAGTCTGTGGTTGCCAATGATGCCTCTGCCCGGGCCG  
 TAGAGCTTATGCACAGAAATGTGGAGCTCAATGGTGTGGCACATCTTGTACAGCCCAACCAGGCAGATGC  
 CCGGATGCTGATGTACCAACACCAAAAGGCATCTGAGCGTTTTGATGTCATTGACCTGGACCCTTATGGC  
 AGCCCTGCCCCCTTCTGGATGCAGCTGTGCAGGCTGTGAGTGTGAGGACTTCTGTGTTACCTGCA  
 CGGACATGGCGGTATTGGCAGGCAACAGCGGAGAGACGTGCTACAGCAAGTATGGGGCCATGGCCCTCAA  
 GAGCCGAGCGTGCCATGAAATGGCCCTGAGAATCGTGCTGCACAGCCTGGACCTGCATGCCAATGCTAC  
 CAGCGGTACATCGTGCCACTGCTCAGTATCAGTGTGACTTCTACGTCCGGGTCTTTGTCCGCGTCTTCA  
 CAGGCCAGGCCAAGGTGAAGTCTCAGCCAGCAAGCAGGCCCTGGTGTCCAGTGTGTGGTTGTGGAGC  
 CTTTTACCTGCAACGCCTTGGCAAAGCATCTGGAGACCCTGGTGGCAGGGTCAAGTTCTCTGCAGCCTGT  
 GGTCTCCAGTGTCCCTGAGTGTGAGCACTGTGGACAGAGACACCAGCTGGGGGGCCCATGTGGGCAG  
 AGCCCATCCAGCCTGGACTTCGTGGGCAAGTCTTGAGGCAGTGACCACTAATCCTGGCCGCTTCCA  
 CACTTCCACAAGGATCCAAGGTGCTCTTAGTGTGGTACTGAGGAACTCCGGATGTCCCTCTACTAC  
 AACTGGACCAACTGAGCAGCACTGTCCACTGCAACACACCCCGCTGCTGCAGCTTCGG

**ACGCGT**ACGCGGCCGCTCGAGCAGAACTCATCTCAGAAGAGGATCTGGCAGCAAATGATATCCTGGATT  
 ACAAGGATGACGACGATAAGGTTTAA



Protein Sequence: >RR210560 representing NM\_001013870  
 Red=Cloning site Green=Tags(s)

MERKAQEPPSPPTMENGTRSCERPPAAPVATVTEGAARISFSPSANEVFNPNVQEFNRDLTCAVITEFAR  
 IHLGAKGIQIKVPGEKDLQKIAVDLSDQEEETAGQENLAPGDQPRPTAAVGEICQEGLRVLEGLAASGLR  
 SIRFALEVPLQSVVANDASARAVELMHRNVELNGVAHLVQPNQADARMLMYQHQAASERFDVIDLDPYG  
 SPAPFLDAAVQAVSDGGLLCVTCTDMAVLAGNSGETCYSKYGAMALKSRACHEMALRIVLHSLDLHANCY  
 QRYIVPLLSISADFYRVFVRFVFTGQAKVKSSASKQALVFQCVGCGAFYLQRLGKASGDPGGRVKFSAAC  
 GPPVSPECEHCGQRHLGGPMWAEPIHDLDFVGVLEAVTTNPNRGRFHTSTRIQGVLSVVTEELPDVPLY  
 TLDQLSSTVHCNTPRLLQLR

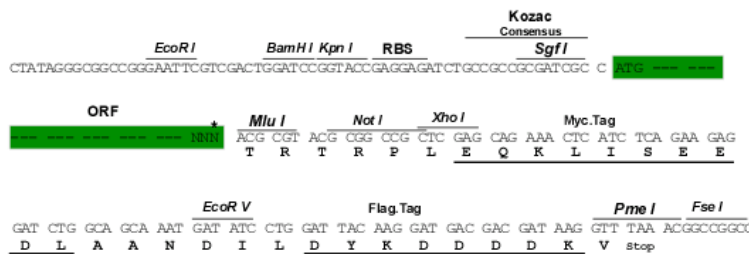
TRTRPLEQKLISEEDLAANDILDYKDDDDKV

Restriction Sites:

SgfI-MluI

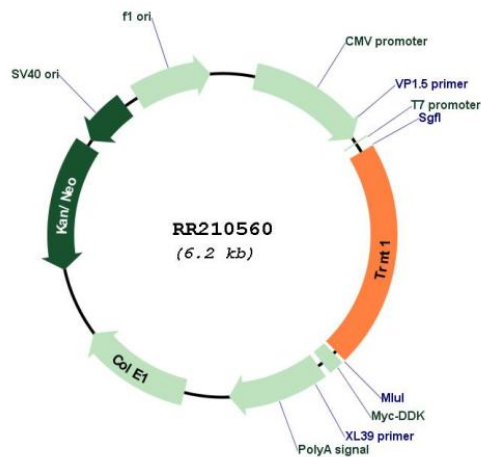
Cloning Scheme:

Cloning sites used for ORF Shuttling:



\* The last codon before the Stop codon of the ORF

Plasmid Map:



ACCN: NM\_001013870

<b>ORF Size:</b>	1320 bp
<b>OTI Disclaimer:</b>	The molecular sequence of this clone aligns with the gene accession number as a point of reference only. However, individual transcript sequences of the same gene can differ through naturally occurring variations (e.g. polymorphisms), each with its own valid existence. This clone is substantially in agreement with the reference, but a complete review of all prevailing variants is recommended prior to use. <a href="#">More info</a>
<b>OTI Annotation:</b>	This clone was engineered to express the complete ORF with an expression tag. Expression varies depending on the nature of the gene.
<b>Components:</b>	The ORF clone is ion-exchange column purified and shipped in a 2D barcoded Matrix tube containing 10ug of transfection-ready, dried plasmid DNA (reconstitute with 100 ul of water).
<b>Reconstitution Method:</b>	<ol style="list-style-type: none"><li>1. Centrifuge at 5,000xg for 5min.</li><li>2. Carefully open the tube and add 100ul of sterile water to dissolve the DNA.</li><li>3. Close the tube and incubate for 10 minutes at room temperature.</li><li>4. Briefly vortex the tube and then do a quick spin (less than 5000xg) to concentrate the liquid at the bottom.</li><li>5. Store the suspended plasmid at -20°C. The DNA is stable for at least one year from date of shipping when stored at -20°C.</li></ol>
<b>RefSeq:</b>	<a href="#">NM_001013870.1</a> , <a href="#">NP_001013892.1</a>
<b>RefSeq Size:</b>	2504 bp
<b>RefSeq ORF:</b>	1323 bp
<b>Locus ID:</b>	288914
<b>Cytogenetics:</b>	19q11
<b>MW:</b>	47.6 kDa