

Product datasheet for **RR210547**

Atad2 (NM_001134879) Rat Tagged ORF Clone

Product data:

Product Type: Expression Plasmids
Product Name: Atad2 (NM_001134879) Rat Tagged ORF Clone
Tag: Myc-DDK
Symbol: Atad2
Vector: pCMV6-Entry (PS100001)
E. coli Selection: Kanamycin (25 ug/mL)
Cell Selection: Neomycin
ORF Nucleotide Sequence: >RR210547 representing NM_001134879
Red=Cloning site Blue=ORF Green=Tags(s)

TTTTGTAATACGACTCACTATAGGGCGGCCGGGAATTCGTCGACTGGATCCGGTACCGAGGAGATCTGCC
GCC**CGATCGCC**

ATGGTGGTCTCCGAGCAGCCTGGAGCTGCACAGTCACTCCACCATCTCTTCGGCCACCGACTCTCTGG
ACCTGTCCAGTGAGTTCCTCAGTCTGGAACACAGCGGCCGGAGGGCGCCAGCTTGGCCGAGCCGCGG
GAAATCTACTGTGCCAAAGCGGAGCGCGGGCGATGGATCCTCAGTTAAGGGAGTTGAAATCTGCCAC
AATACACGTTCTTTAAGGTCTTTGAGAAAAGCAAGCACAACCTTCTCGGATTCTAGTTCTGATAAGAATG
TGGAAAGAACAGAGAAATACTGCAATGGCAGACATTTACAAGGCAGTTGGCTCAACAGCAGGCTGATAA
AAAAAAGAAGAAATGCCAAGAAGACAAAGCTATTCAGTTATTCGCTCACTGAGGAATAGAAACATTGCT
CCGAGTACAGAACATTTGCATGAACAAAGTGGAGATGTTGAAGTTCGAAGAAGTTGATAGGATTAGAACAT
GTCGTTACAGTACCATGAACCAGTCTGTGCTATTTGATAAGCTTATAACAAACACTGCTGAAGCTGTACT
TCAAAAGATGGATGACATGAAGAAGATGCGTAGACAGCGAATGAAGAACTTGAAGATCTGGCGTGTTT
AATGAAACAGAAGAGAGTAATCTTACAATGTACACAAGAGGAAAACGAAAGGCTATTCAGCAGGCTGATG
AAGAAACAACGGATAACCAAGACGCGAGTGTGGAGTCATCTGAAGAGGGTGAAGCAAGAGGATGATGA
TGGTGAAGATGAAGAAGATGATGAAGATGAAGAAGAAGATGGAGAAGAAGATAATCAGAAAAGATACTAC
CTTAGGCAGAGAAAAGCAACTGTTTACTACCAGGCTCCACTGGAAAAACCTCGTCAACAGAGAAAAGCCCA
ACATGTTTTATAGTGGCCAGCTTCTCCTGCAAGACCAAGATACCGGTTGTGCTCTTCAGGACCTAGAAG
TCCCTATTGTAACGAATGAACAGGCGAAGGCATGCCATCCACAGTAGTGATTCTACTTCTCTCTCTCC
TCCTCTGAAGATGAATGCTTTGAGAGGAGAAGAAAAGGAACCGAAAATAGAGCTATTAACAGGTGCCTCC
CACTAAATTTTCGAAAAGATGAAATAAGAGGAATTTATAAAGATCGAATGAAAATGGAGCAAACCTTGC
TGATGTTGATCCAATGCAACTGGATTCTCAGTGCGATTTGATAGTGTGGCGCCTGTCCAGTCACATT
GCAGCTCTAAAAGAGATGGTGTGTTCCCTTACTTTATCCAGAAGTCTTTGAAAAGTTTAAAATTC AAC
CTCCAAGAGGTTGTTGTTTTATGGACCACCTGGAACCTGGAAAAACACTGGTTGCTAGAGCACTTGCCAA
TGAGTGTAGTCGAGGGGATAAAAAGAGTGCGTTTTTTCATGAGGAAAAGGTGCTGATTGTCTGAGTAAATGG
GTAGGAGAATCTGAAAGACAGCTACGATTGCTATTTGATCAGGCCTATCAGATGCGCCAGCAATTATAT
TCTTTGATGAAATCGATGGTCTGGCTCCAGTACGATCTAGCAGGCAAGATCAGATTCACAGTTCTATTGT
TTCAACCTGTTAGCTCTTATGGATGGTTGGACAGCAGAGGAGAAAATTGGTTCATTGGAGCTACCAAC



[View online »](#)

AGACTAGATTCCATAGACCCTGCTTTACGAAGGCTGGTCGATTTGACAGAGAATTCCTTTTCAGTCTAC
CTGATAAAGATGCTCGAAAAGAGATTCTGAAGATTCATACAAGAGATTGGAATCCAAAACAGTGGACAT
GTTTTTAGAAGAACTAGCAGAAAAGTGTGTTGGATACTGTGGTGCAGATATTAAGTCAATATGTGCCGAA
GCTGCTTATGTGCCCTGCGTCGACGGTACCCTCAGATCTATACCACCAGTGAGAAAACACAGTTGGATC
TCTCTTCAATTAATCTCAGCTAAGGATTTTGTGACAGCTATGCAAAAAGATAATACCAGCTTCCAGAG
AGCTGTGACATCACCGGGACAGGCACTGTCTGCCATTGTGAAACCACTTCTGCAAAATACATGTTTCATATG
ATCTTAGAAGCCCTACAGAAAAGTGTTCACATGTGGAAGTTGGAACAACAAGCTTTAAATTCAGATG
TTTCTTTCCCTTTGCTAGAGAGTGATTTGGCATACAGTGATGATGATACACCGTCAATGTATGAAAATGG
ACTTTCTCAAAAAATTTAATCAGGCAAAAAGAAAATTTAAATTTTCTTCATTTAAATAGAAATGCCTGT
TACCAGCCTATGTCTTTTCGACCAAGACTATTGATAGTGGGAGAACCAGGATTTGGACAGAGTTCTCACT
TGGCACCAGCTGTAATCCATGCTTTGGAATAATTTACTGTATATACATTAGACATTCCTGTTCTTTTTGG
CATTAGTACTACATCTCCTGAAGAGGCATGCTCACAAATGATTGCGTGAAGCTAAGAGAACAGCACCCAGC
ATAGTCTATGTCCCGCATGTCCACTTGTGGTGGGAAATCGTTGGCCGACACTCAGGGCCAGTTACAA
CATTATTACAGAATATCCCTTCGTTTGTCCAGTGTTACTGCTTGAACCTCTGAGAGACCATACTCCGC
TCTGCCTGAAGAGGTACAAGAATTGTTTACCCATGATTATGGAGAAATTTTAAATGTCCAGTTACCAGAT
AAAGAAGAACGAACCAATTTTTTGAAGACTTAATTTTAAAACAAGCTGCAAAACCTCCTGTGTCACAAA
AGAAAGCAGTTCTGCAGGCCTTGGAGGTGCTCCCGGTGGCACCTCCACCTGAACCAAGACCACTGACAGC
AGAAGAAGTTAAACGGCTTGAAGAACAAGAAGAAGATACATTTAGAGAACTCAGGATTTTCTTAAGAAAT
GTCACACATAGACTTGCTATTGATAAGCGATTCCGAGTCTTCACTAAGCCTGTTGACCCTGATGAGGTTT
CTGATTATGCTACTGTCATAAAGCAGCCAAATGGACCTTTCATCTGTAATCAGTAAATGATTTACATAA
ATACCTGACTGTGAAAGACTATTTGAAGGATATTGATCTAATCTGTAGTAACGCTTTAGAATACAATCCA
GATAGAGATCCTGGAGATCGTCTTATTAGGCACAGAGCTTGTGCTTTAAGAGACTGCTATGCAATCA
TTAAAGAAGAGCTTGATGAAGACTTTGAGCAGCTTTGTGAAGAAATTCAGGAATCTAGGAAGAAAAGAGG
TTGTAGTCTTCCAAATATGCACCATCTTATTACCACGTCATGCCAAAGCAAAATTCACCTCCTGTGCGT
GATAAAAAGGTCAGATCAAGAGCAGAAGGAGAAGCTGAAGGCACCTTGTACTCCCATGGCAAGCAGCACCC
CTGCTCGGTTGAAGAGAAAATTCGGAAAAAGTCAAAGTGGCATGTAGGCACCAAAATAAAACGAAGGAA
AATTTACAAGCTAAAGACAGTAGCCAGACTGCTGTGAACAGTGAAGCAGGAGTGACTCAGAAGACAGT
CAGCATAACAGTACAGAGCTCGGAAACACAGGGGAGTCCAGTAGAAGAAAGTGACAAGCAGAACACCT
CTGAAAGCAACATAGACTTGAATAAATACTCAAGTTCTCCAATATTGAGAATGAACTTGAAGAGCCTAA
GCAAACTGCAGAGGGCACAGAGCTGAAAAAGCCAGGATTGTTTGTAGTGGCGATGCCGCTACCTCCAG
GTCACAGACATTGCTGAAGAAAATGAATCAAAAGAAATGGGGTTTCTGCGAATGACTCGAGCTAGACATT
CCCAGGTAGAGCAGCAGAGCTGATCGGTATGGAAAAGGCTCTGGCGATTCTCTCAGCCTACACCTTC
ACTTGTGTGGACCATAAGCACTTAAAAATCTTTTGAAGACTGTTGTTAAAAAAGTCAGGAATATAAT
ATATTCAACTGGAAAATTTGTATGCAGTCTCAGCCAGTGATTTATGAGCACCAGGGGACTATGACA
AAACAGCACTTGTTTCAGAAAATGGAGCAAGCAGTAGAGAATTCAGTTGTTCCAGATCA

ACGCGTACGCGGCCGCTCGAGCAGAACTCATCTCAGAAGAGGATCTGGCAGCAATGATATCCTGGATT
ACAAGGATGACGACGATAAGGTTTAA

Protein Sequence: >RR210547 representing NM_001134879
 Red=Cloning site Green=Tags(s)

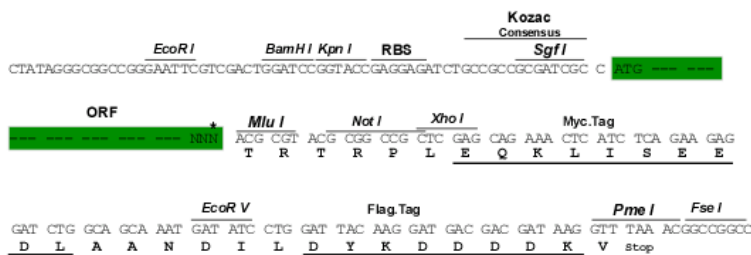
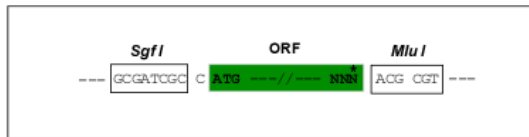
MVVLRSSLELHSHSTISSATDSLDSSEFLSLEHSGRRRPSLARAAGKSTVPKAEAGDGSSVKVEICH
 NTRSLRSLRKQAQTSSDSSSDKNVERTEKYCNGRHFTRQLAQQQADKKKEECQEDKAIPVIRSLRNRNIA
 PSTEHLHEQSGDVEVRRSCRIRTCRYSTMNQSVLFDKLI TNTAEAVLQKMDMKMRQRMKLEDLGVF
 NETEESNL TMYTRGKRKA IQQADEETTDNQDGSVESSEEGEEQEDDDGEDEEEDDEEEDGEEEDNQKRY
 LRQRKATVYYQAPLEKPRHQKPNMFYSGPASPAPRYRLSSSGPRSPYCKRMNRRRHAIHSSDSTSSSS
 SSEDECFERRRKRNRNRAINRCLPLNFRKDEIRGIYKDRMKIGANLADVDPMQLDSSVRFDSVGGLS
 SHIAALKEMVLFPLL YPEVFEKFKIQPPRGCLFYGPPGTGKTLVARALANEC SRGDKRVAFFMRKGADCLSKW
 VGESERQLRLLFDQAYQMRPAIIFDEIDGLAPVRSSRQDQIHSSIVSTLLALMDGLDSRGEIVVIGATN
 RLDSIDPALRRPGRFDREFL FSLPDKDARKEILKIHTRDWNPKPVDMFLEELAENCVGYCGADIKSICAE
 AALCALRRYPQIYTTSEKLQLDSSINISAKDFETAMQKIIPASQRAVTPSGQALSAIVKPLLQNTVHM
 ILEALQKVFPHVEVGTNKALNSDVSFPLESDLAYSDDDTPSMYENGLSQKNFNQAKENLFLHLNRNAC
 YQPMSFRPRLIVGEPGFQSSHLAPAVIHAEKFTVYTLDIPVLFGISTTSPEEACSQMIREAKRTAPS
 IVYVPHVHLWWEIVGPTLRATFTLLQNI PSFAPVLLLATSERPYSALPEEVQELFTHDYGEIFNVQLPD
 KEERTKFFEDLILKQAAKPPVSQKKA VLQALEVLPVAPPEPRPLTAEVKRLEEQEEDTFRELRIFLRN
 VTHRLAIDKFRVFTKPVDPDEVPDYVTVIKQPMDLSSVISKIDLHKYLVKDYLDKIDLICSNALEYNP
 DRDPGDRLIRHRACALRDTAYAIKEELDEDFEQLCEEIQESRKRKGCSSSKYAPSYHYHMPKQNSTPVG
 DKRSDQEKEKLRKAPCTPMASSTPARLKRKFRKSKWHVGTIKIKRRIKISQAKDSSQTAVNSASRSDSEDS
 QHTRTELGNTESSVEESDKQNTSESNIDLKNNSSSNIENELEPKQTAEGETLKKARIVCSGDAATSQ
 VTDIAEENESKEMGFLMTRARHSQVEQQQLIGMEKALAILSQPTPSLVVDHKHLKNLLKTVVKKSQEYN
 IFQLENLYAVLSQCIYEHRRDYDKTALVQKMEQAVENFSCSRS

TRTRPLEQKLISEEDLAANDILDYKDDDDKV

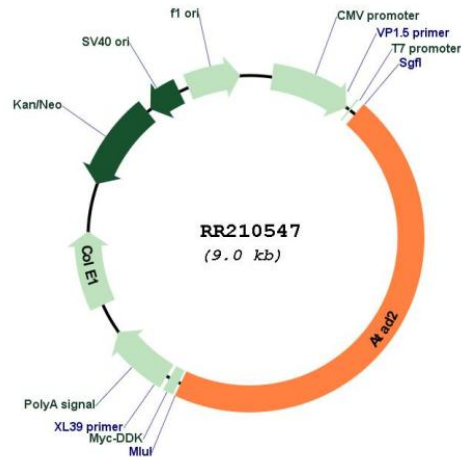
Restriction Sites:
Cloning Scheme:

SgfI-MluI

Cloning sites used for ORF Shuttling:



* The last codon before the Stop codon of the ORF

Plasmid Map:


ACCN: NM_001134879

ORF Size: 4119 bp

OTI Disclaimer: The molecular sequence of this clone aligns with the gene accession number as a point of reference only. However, individual transcript sequences of the same gene can differ through naturally occurring variations (e.g. polymorphisms), each with its own valid existence. This clone is substantially in agreement with the reference, but a complete review of all prevailing variants is recommended prior to use. [More info](#)

OTI Annotation: This clone was engineered to express the complete ORF with an expression tag. Expression varies depending on the nature of the gene.

Components: The ORF clone is ion-exchange column purified and shipped in a 2D barcoded Matrix tube containing 10ug of transfection-ready, dried plasmid DNA (reconstitute with 100 ul of water).

Reconstitution Method:

1. Centrifuge at 5,000xg for 5min.
2. Carefully open the tube and add 100ul of sterile water to dissolve the DNA.
3. Close the tube and incubate for 10 minutes at room temperature.
4. Briefly vortex the tube and then do a quick spin (less than 5000xg) to concentrate the liquid at the bottom.
5. Store the suspended plasmid at -20°C. The DNA is stable for at least one year from date of shipping when stored at -20°C.

RefSeq: [NM_001134879.1](#), [NP_001128351.1](#)

RefSeq Size: 5557 bp

RefSeq ORF: 4122 bp

Locus ID: 314993

Cytogenetics: 7q33

MW: 156 kDa